

## Product datasheet for **RC402984**

### **BRCA1 (NM\_007294) Human Mutant ORF Clone**

#### **Product data:**

Product Type:	Mutant ORF Clones
Product Name:	BRCA1 (NM_007294) Human Mutant ORF Clone
Mutation Description:	E879X
Affected Codon#:	879
Affected NT#:	2635
Nucleotide Mutation:	BRCA1 Mutant (E879X), Myc-DDK-tagged ORF clone of Homo sapiens breast Cancer, early onset (BRCA1), transcript variant 1 as transfection-ready DNA
Effect:	Breast cancer
Symbol:	BRCA1
Synonyms:	BRCAI; BRCC1; BROVCA1; FANCS; IRIS; PNCA4; PPP1R53; PSCP; RNF53
E. coli Selection:	Kanamycin (25 ug/mL)
Mammalian Cell Selection:	Neomycin
Vector:	pCMV6-Entry (PS100001)
Tag:	Myc-DDK
ACCN:	NM_007294
ORF Size:	2634 bp
Restriction Sites:	Sgfl-Mlul



[View online »](#)

**ORF Nucleotide Sequence:**

>RC402984 representing NM\_007294  
 Red=Cloning site Blue=ORF Green=Tags(s)

TTTTGTAATACGACTCACTATAGGGCGGCCGGGAATTCGTCGACTGGATCCGGTACCGAGGAGATCTGCC  
 GCC**CGATCGCC**

ATGGATTTATCTGCTCTTCGCGTTGAAGAAGTACAAAATGTCATTAATGCTATGCAGAAAATCTTAGAGT  
 GTCCCATCTGTCTGGAGTTGATCAAGGAACCTGTCTCCACAAAGTGTGACCACATATTTTGCAAATTTG  
 CATGCTGAAACTTCTCAACCAGAAGAAAGGGCCTTCACAGTGTCTTTATGTAAGAATGATATAACCAAA  
 AGGAGCCTACAAGAAAGTACGAGATTTAGTCAACTTGTGAAGAGCTATTGAAAAATTTGTGCTTTTC  
 AGCTTGACACAGGTTTGGAGTATGCAAACAGCTATAATTTTGCAAAAAGGAAAAAATACTCTCCTGAACA  
 TCTAAAAGATGAAGTTTCTATCATCCAAAGTATGGGCTACAGAAAACCGTCCAAAAGACTTCTACAGAGT  
 GAACCCGAAAAATCCTTCCTTGCAGGAAACCACTCAGTGTCCAACCTCTAACCTTGGAACTGTGAGAA  
 CTCTGAGGACAAAGCAGCGGATACAACCTCAAAAGACGCTGTCTACATTGAATTGGGATCTGATTCTTC  
 TGAAGATACCGTTAATAAGGCAACTTATTGCAGTGTGGGAGATCAAGAATTGTTACAAAATCACCCCTCAA  
 GGAACCCAGGGATGAAATCAGTTTGGATTCTGCAAAAAGGCTGCTTGTGAATTTTCTGAGACGGATGTA  
 CAAACTACTGAACATCATCAACCCAGTAATAATGATTTGAACACCACTGAGAAGCGTGCAGCTGAGAGGCA  
 TCCAGAAAAGTATCAGGGTAGTTCTGTTTCAAACCTGTCATGTGGAGCCATGTGGCACAAAATACTCATGCC  
 AGCTCATTACAGCATGAGAACAGCAGTTTATTACTCACTAAAGACAGAAATGAATGTAGAAAAGGCTGAAT  
 TCTGTAATAAAAAGCAAACAGCCTGGCTTAGCAAGGAGCCAACATAACAGATGGGCTGGAAGTAAGGAAAC  
 ATGTAATGATAGGCGGACTCCCAGCACAGAAAAAAGGTAGATCTGAATGCTGATCCCTGTGTGAGAGA  
 AAAGAAATGGAATAAGCAGAACTGCCATGCTCAGAGAATCCTAGAGATACTGAAGATGTTCCCTGGATAA  
 CACTAAATAGCAGCATTAGAAAAGTTAATGAGTGGTTTTCCAGAAGTGAAGCTGTTAGTTCTGATGA  
 CTCACATGATGGGGAGTCTGAATCAAATGCCAAAGTAGCTGATGTATTGGACGTTCTAAATGAGGTAGAT  
 GAATATTCTGGTTCTTTCAGAGAAAATAGACTTACTGGCCAGTGTCTCATGAGGCTTTAATATGTA  
 GTGAAAGAGTTCACTCCAAATCAGTAGAGAGTAATATTGAAGACAAAATATTTGGGAAAACCTATCGGAA  
 GAAGGCAAGCCTCCCAACTTAAGCCATGTAACGAAAATCTAATTATAGGAGCATTGTTACTGAGCCA  
 CAGATAATACAAGAGCGTCCCCTCACAATAAATTAAGCGTAAAAGGAGACCTACATCAGGCTTCATC  
 CTGAGGATTTTATCAAGAAAGCAGATTTGGCAGTTCAAAGACTCCTGAAATGATAAATCAGGAACTAA  
 CCAAACGAGCAGAATGGTCAAGTATGATTAATACTAATAGTGGTCATGAGAATAAAACAAAAGGTGAT  
 TCTATTCAGAATGAGAAAAATCCTAACCAATAGAATCACTCGAAAAAGAAATCTGCTTTCAAACGAAAG  
 CTGAACCTATAAGCAGCAGTATAAGCAATATGGAACCTCGAATTAATATCCACAATTCAAAAGCACCTAA  
 AAAGAATAGGCTGAGGAGGAAGTCTTCTACCAGGCATATTCATGCGCTTGAACCTAGTAGTCAGTAGAAAT  
 CTAAGCCACCTAATTGTACTGAATTGCAAAATGATAGTTGTTCTAGCAGTGAAGAGATAAAGAAAAAA  
 AGTACAACCAATGCCAGTCAGGCACAGCAGAAACCTACAACCTCATGGAAGGTAAGAACCTGCAACTGG  
 AGCCAAGAAGAGTAACAAGCCAAATGAACAGACAAGTAAAAGACATGACAGCGTACTTTCCAGAGCTG  
 AAGTTAACAAATGCACCTGGTTCTTTTACTAAGTGTCAAATACCAGTGAACCTAAAGAATTTGTCAATC  
 CTAGCCTTCCAAGAGAAGAAAAAGAAGAGAACTAGAAACAGTTAAAGTGTCTAATAATGCTGAAGACCC  
 CAAAGATCTCATGTTAAGTGGAGAAAGGTTTTGCAAACTGAAAGATCTGTAGAGAGTAGCAGTATTTCA  
 TTGGTACTGGTACTGATTATGGCACTCAGGAAAGTATCTCGTTACTGGAAGTTAGCACTTAGGGGAAAG  
 CAAAAACAGAACCAAAATAAATGTGTGAGTCAAGTGTGCAGCATTGAAAACCCCAAGGACTAATTCATGG  
 TTGTTCCAAAGATAATAGAAATGACACAGAAGGCTTTAAGTATCCATTGGGACATGAAGTTAACCACAGT  
 CGGAAACAAGCATAGAAATGGAAGAAAGTGAACCTTGATGCTCAGTATTTGCAGAATACATTCAAGGTTT  
 CAAAGCGCAGTCATTTGCTCCGTTTTCAAATCCAGGAAATGCA

AG**CGGACCG**ACGCGTACGCGGCCGCTCGAGCAGAACTCATCTCAGAAGAGGATCTGGCAGCAAATGATATCC  
 TGGATTACAAGGATGACGACGA TAAGGTTTAA

**Protein Sequence:** >RC402984 representing NM\_007294  
 Red=Cloning site Green=Tags(s)

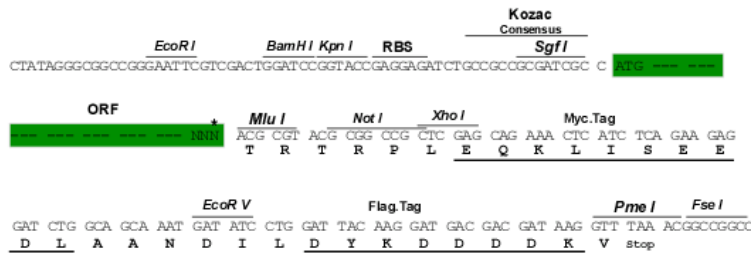
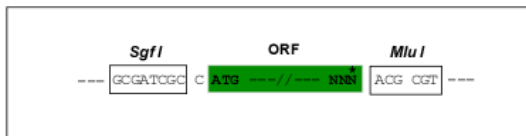
MDLSALRVEEVQNVINAMQKILECPICLLELIKEPVSTKCDHIFCKFCMLKLLNQKKGPSQCPLCKNDITK  
 RSLQESTRFSQLVEELKIIICAFQLDTGLEAYANSYFNAKKNNSPEHLKDEVSIIQSMGYRNRARLLQS  
 EPENPSLQETSLSVQLSNLGTVRTLRKQRIQPQKTSVYIELGSDSSEDTVNKATYCSVGDQELLQITPQ  
 GTRDEISLDSAKKAACEFSETDVTNTEHHQPSNNDLNTTEKRAAERHPEKYQGSSVSNLHVPCGTNTHA  
 SSLQHENSLLLLTKDRMNVKEAEFCNKSKQPGLARSQHNRWAGSKETCNDRRTPSTEKKVDLNADPLCER  
 KEWNNKQLPCSENPRDTEVPWITLNSSIQKVNEWFSRSEDELLGSDSDHGESESENAKVADVLDVLENEVD  
 EYSGSSEKIDLLASDPHEALICKSERVHKSVESNIEDKIFGKTYRKKASLPNLSHVTENLIIGAFVTEP  
 QIIQERPLTNKLRKRRTSGLHPEDFIKKADLAVQKTPEMINQGTNQTEQNGQVMNITNSGHENKTKGD  
 SIQNEKNPNPIESLEKESAFKTKAEPISSSISNMELELNIHNSKAPKKNRLRRKSSTRHIALELVVSRN  
 LSPNCTELQIDSCSSSEIKKKKYNQMPVHRNRLQLMEGKEPATGAKKSNKPNEQTSKRHDSDTFPEL  
 KLTNAPGSFTKCSNTSELKEFVNPSLPREEKEELETVKVSNNAEDPKDMLSGERVLQTERSVESSSIS  
 LVPGTGYGTQESISLLEVSTLGAKTEPNKCVSQCAAFENPKGLIHGCSKDNRRNDEGFKYPLGHEVNHS  
 RETSIEMEESELDAQYLQNTFKVSKRQSFAPFSNPGNA

SGPTRRRLEQKLISEEDLAANDILDYKDDDDKV

**Restriction Sites:** SgfI-MluI

**Cloning Scheme:**

Cloning sites used for ORF Shutting:



\* The last codon before the Stop codon of the ORF

<b>OTI Disclaimer:</b>	<p>Due to the inherent nature of this plasmid, standard methods to replicate additional amounts of DNA in E. coli are highly likely to result in mutations and/or rearrangements. Therefore, OriGene does not guarantee the capability to replicate this plasmid DNA. Additional amounts of DNA can be purchased from OriGene with batch-specific, full-sequence verification at a reduced cost. Please contact our customer care team at <a href="mailto:custsupport@origene.com">custsupport@origene.com</a> or by calling 301.340.3188 option 3 for pricing and delivery.</p> <p>The molecular sequence of this clone aligns with the gene accession number as a point of reference only. However, individual transcript sequences of the same gene can differ through naturally occurring variations (e.g. polymorphisms), each with its own valid existence. This clone is substantially in agreement with the reference, but a complete review of all prevailing variants is recommended prior to use. <a href="#">More info</a></p>
<b>OTI Annotation:</b>	This clone was engineered to express the complete ORF with an expression tag. Expression varies depending on the nature of the gene.
<b>Components:</b>	The ORF clone is ion-exchange column purified and shipped in a 2D barcoded Matrix tube containing 10ug of transfection-ready, dried plasmid DNA (reconstitute with 100 ul of water).
<b>RefSeq:</b>	<a href="#">NP_009225</a>
<b>RefSeq Size:</b>	2634 bp
<b>RefSeq ORF:</b>	5592 bp
<b>Locus ID:</b>	672
<b>Cytogenetics:</b>	17q21.31
<b>Domains:</b>	BRCT, RING
<b>Protein Families:</b>	Druggable Genome, Transcription Factors
<b>Protein Pathways:</b>	Ubiquitin mediated proteolysis
<b>MW:</b>	96.6 kDa
<b>Gene Summary:</b>	<p>This gene encodes a 190 kD nuclear phosphoprotein that plays a role in maintaining genomic stability, and it also acts as a tumor suppressor. The BRCA1 gene contains 22 exons spanning about 110 kb of DNA. The encoded protein combines with other tumor suppressors, DNA damage sensors, and signal transducers to form a large multi-subunit protein complex known as the BRCA1-associated genome surveillance complex (BASC). This gene product associates with RNA polymerase II, and through the C-terminal domain, also interacts with histone deacetylase complexes. This protein thus plays a role in transcription, DNA repair of double-stranded breaks, and recombination. Mutations in this gene are responsible for approximately 40% of inherited breast cancers and more than 80% of inherited breast and ovarian cancers. Alternative splicing plays a role in modulating the subcellular localization and physiological function of this gene. Many alternatively spliced transcript variants, some of which are disease-associated mutations, have been described for this gene, but the full-length natures of only some of these variants has been described. A related pseudogene, which is also located on chromosome 17, has been identified. [provided by RefSeq, May 2020]</p>