

Product datasheet for **RC402863**

BRCA1 (NM_007294) Human Mutant ORF Clone

Product data:

| | |
|---------------------------|---|
| Product Type: | Mutant ORF Clones |
| Product Name: | BRCA1 (NM_007294) Human Mutant ORF Clone |
| Mutation Description: | Y130X |
| Affected Codon#: | 130 |
| Affected NT#: | 390 |
| Nucleotide Mutation: | BRCA1 Mutant (Y130X), Myc-DDK-tagged ORF clone of Homo sapiens breast Cancer, early onset (BRCA1), transcript variant 1 as transfection-ready DNA |
| Effect: | Breast and/or ovarian cancer |
| Symbol: | BRCA1 |
| Synonyms: | BRCAI; BRCC1; BROVCA1; FANCS; IRIS; PNCA4; PPP1R53; PSCP; RNF53 |
| E. coli Selection: | Kanamycin (25 ug/mL) |
| Mammalian Cell Selection: | Neomycin |
| Vector: | pCMV6-Entry (PS100001) |
| Tag: | Myc-DDK |
| ACCN: | NM_007294 |
| ORF Size: | 387 bp |
| Restriction Sites: | Sgfl-MluI |



[View online »](#)

ORF Nucleotide
Sequence:

>RC402863 representing NM_007294
Red=Cloning site Blue=ORF Green=Tags(s)

TTTTGTAATACGACTCACTATAGGGCGGCCGGAATTCGTCGACTGGATCCGGTACCGAGGAGATCTGCC
GCCCGCATCGCC

ATGGATTATCTGCTCTTCGCGTTGAAGAAGTACAAAATGTCATTAATGCTATGCAGAAAATCTTAGAGT
GTCCCATCTGTCTGGAGTTGATCAAGGAACCTGTCTCCACAAAGTGTGACCACATATTTTGCAAATTTTG
CATGCTGAAACTTCTCAACCAGAAGAAAGGGCCTTCACAGTGTCTTTATGTAAGAATGATATAACCAAA
AGGAGCCTACAAGAAAGTACGAGATTTAGTCAACTTGTGAAGAGCTATTGAAAATCATTTGTGCTTTTC
AGCTTGACACAGGTTTGGAGTATGCAAACAGCTATAATTTTGAAAAAGGAAAATAACTCTCTGAACA
TCTAAAAGATGAAGTTTCTATCATCAAAGTATGGGC

AGCGGACCGACGCGTACGCGGCCGCTCGAGCAGAAACTCATCTCAGAAGAGGATCTGGCAGCAAATGATATCC
TGGATTACAAGGATGACGACGA TAAGTTTAA

Protein Sequence:

>RC402863 representing NM_007294
Red=Cloning site Green=Tags(s)

MDLSALRVEEVQNVINAMQKILECPICLLEIKPEVSTKCDHIFCKFCMLKLLNQKKGPSQCPLCKNDITK
RSLQESTRFSQLVEELLKIICAFQLDTGLEAYNSYNFAKKENNSPEHLKDEVSIQSMG

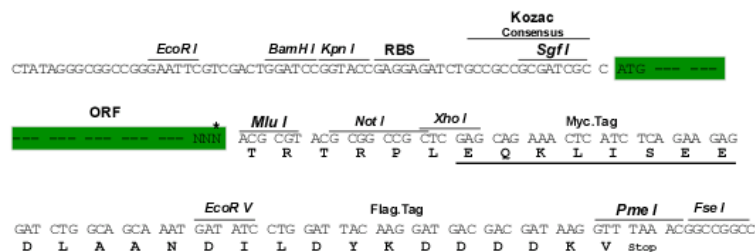
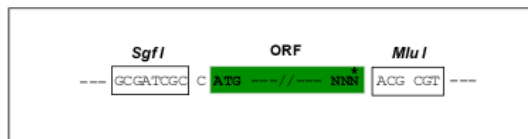
SGPTRRRLEQKLISEEDLAANDILDYKDDDDKV

Restriction Sites:

Cloning Scheme:

Sgfi-MluI

Cloning sites used for ORF Shuttling:



* The last codon before the Stop codon of the ORF

| | |
|--------------------------|--|
| OTI Disclaimer: | <p>Due to the inherent nature of this plasmid, standard methods to replicate additional amounts of DNA in E. coli are highly likely to result in mutations and/or rearrangements. Therefore, OriGene does not guarantee the capability to replicate this plasmid DNA. Additional amounts of DNA can be purchased from OriGene with batch-specific, full-sequence verification at a reduced cost. Please contact our customer care team at custsupport@origene.com or by calling 301.340.3188 option 3 for pricing and delivery.</p> <p>The molecular sequence of this clone aligns with the gene accession number as a point of reference only. However, individual transcript sequences of the same gene can differ through naturally occurring variations (e.g. polymorphisms), each with its own valid existence. This clone is substantially in agreement with the reference, but a complete review of all prevailing variants is recommended prior to use. More info</p> |
| OTI Annotation: | This clone was engineered to express the complete ORF with an expression tag. Expression varies depending on the nature of the gene. |
| Components: | The ORF clone is ion-exchange column purified and shipped in a 2D barcoded Matrix tube containing 10ug of transfection-ready, dried plasmid DNA (reconstitute with 100 ul of water). |
| Note: | Plasmids are not sterile. For experiments where strict sterility is required, filtration with 0.22um filter is required. |
| RefSeq: | NP_009225 |
| RefSeq Size: | 387 bp |
| RefSeq ORF: | 5592 bp |
| Locus ID: | 672 |
| Cytogenetics: | 17q21.31 |
| Domains: | BRCT, RING |
| Protein Families: | Druggable Genome, Transcription Factors |
| Protein Pathways: | Ubiquitin mediated proteolysis |
| MW: | 14.2 kDa |

Gene Summary:

This gene encodes a 190 kD nuclear phosphoprotein that plays a role in maintaining genomic stability, and it also acts as a tumor suppressor. The BRCA1 gene contains 22 exons spanning about 110 kb of DNA. The encoded protein combines with other tumor suppressors, DNA damage sensors, and signal transducers to form a large multi-subunit protein complex known as the BRCA1-associated genome surveillance complex (BASC). This gene product associates with RNA polymerase II, and through the C-terminal domain, also interacts with histone deacetylase complexes. This protein thus plays a role in transcription, DNA repair of double-stranded breaks, and recombination. Mutations in this gene are responsible for approximately 40% of inherited breast cancers and more than 80% of inherited breast and ovarian cancers. Alternative splicing plays a role in modulating the subcellular localization and physiological function of this gene. Many alternatively spliced transcript variants, some of which are disease-associated mutations, have been described for this gene, but the full-length natures of only some of these variants has been described. A related pseudogene, which is also located on chromosome 17, has been identified. [provided by RefSeq, May 2020]