

Product datasheet for **RC402617**

LTK (NM_002344) Human Mutant ORF Clone

Product data:

Product Type:	Mutant ORF Clones
Product Name:	LTK (NM_002344) Human Mutant ORF Clone
Mutation Description:	E763K
Affected Codon#:	763
Affected NT#:	2287
Nucleotide Mutation:	LTK Mutant (E763K), Myc-DDK-tagged ORF clone of Homo sapiens leukocyte receptor tyrosine kinase (LTK), transcript variant 1 as transfection-ready DNA
Effect:	Sysemi lupus eryhemosus, susepibiliy, ssoiion
Symbol:	LTK
Synonyms:	TYK1
E. coli Selection:	Kanamycin (25 ug/mL)
Mammalian Cell Selection:	Neomycin
Vector:	pCMV6-Entry (PS100001)
Tag:	Myc-DDK
ACCN:	NM_002344
ORF Size:	2592 bp
Restriction Sites:	Sgfl-Mlul



[View online »](#)

ORF Nucleotide Sequence:

>RC402617 representing NM_002344
 Red=Cloning site Blue=ORF Green=Tags(s)

TTTTGTAATACGACTCACTATAGGGCGGCCGGGAATTCGTCGACTGGATCCGGTACCGAGGAGATCTGCC
 GCC**CGGATCGCC**

ATGGGCTGCTGGGGACAGCTGCTGGTGTGGTTCGGAGCCGCGGGCCATTCTCTGCTCTAGCCCGGGT
 CCCAGGAGACTTTTCTGCGGTCCCTCGCCCTGCCGCTGGCAAGTCCCAGCCCCGGGACCGAAAAGTCAG
 CGCCCCGCTAGTATCTTGGAGCCAGCTCCCCGCTGAATTCTCCGGGACCGAGGGGTCTTGGCTGTTT
 TCTACCTGCGGGGCCAGCGCCGGCATGGGCCACACAGACACAATGTGACGGGGCGTACCGGGGACCA
 GCGTGGTGGTACCGTGGGGGCCCGGGCAGCTGAGAGGCGTGCAGCTGTGGCGCTGCCGGCCCTGG
 CCAGTATCTGATCTCAGCCTACGGAGCCGCGGGCGCAAGGGCGCAAGAACCACCTGTCGCGGGCGCAT
 GCGTCTTCGTCTCAGCAATCTTCTCCCTCGTCTCGGGGAGTCGCTGTACATCTGGTGGGCGCAGG
 GAGAGGACGCTGTCCCAGGAGTACCCGGAGAGCCAGCTCGTCTGCCTCGGGGAGTCTCGAGCCGTTGA
 AGAGCACGCGGCATGGATGGGAGCGAAGGGTCCCAGGGTTCGCGGCGTGGGCGGAGGTGGCGGGGT
 GGCGGGGGCGCCACTACGTTTTCCGGGTGCGCGCTGGCGAGCTGGAACCGTTGCTGGTGGCGGGCGAG
 GCGGCGGTTCGGGCTACCTGAGGCCGCGGGACCGAGGCCGACTCAGGCCTCCCCGAGAAAAGTGGAGAA
 CCGCTCGGAGGCGCCCGGAGCGGCGGGAGAGGCGGGCGGCAGGTGGTGGGGCGGCTGGACGTCGCGG
 GCTCCCTCTCCGAGGCCGCGGCTCACTGCAGAGGGGGCGAGGGCGGCCAGGGTCTCCGAGGCTT
 GGGCGACCTTGGCTGGGCCGCGGGCGGGCTTCGGGGCGGCGGGGGCTGCACTGCGGGCGGAGG
 CGGCGGCGGCTACAGGGGGGCGACGCTTACAGAGTACAACCTCTGGGCTGATGGGAAGATGGAGTA
 TCCTTCATACACCCAGCAGCGAGCTCTTCTGCAGCCTCTGGCAGTACCAGAGAACCAGGAGAGGTAG
 AGATCCGAAGGCACCTCAACTGCAGTCACTGCCCTTTGAGAGACTGCCAATGGCAGGAGTCCAGT
 GGCTGAATGCCTGTGCCAGAAGGCATGGAGTACTGTGGATAACGTACCTGCATGGACCTGCACAAG
 CCCCCAGGCCCTCTGTTCTGATGGTGGCTGTGGTGGCAACCTCAACTGAGCCTCCTTATGGTGTGTG
 GGGTCTGATTCTGGTGAAGCAGAAGAAGTGGCAGGGCCTGCAGGAGATGAGGCTGCCGAGCCCTGAGCT
 TGAGCTGAGCAAGCTTGAACCTCTGCCATCAGGACAGCCCCAATCCCTATTATTGCCAGTGGGGCTT
 GGCCCGGCCAGTCTGGCCTCTGCCACCAGGTGTACCAGGTTTCCCAGCCAATGTTACTCTGCTCA
 GAGCCCTGGGCCATGGTGCCTTTGGGAGGTGTATGAGGGACTGGTAATTGGCCTTCTGGGACTCCAG
 TCCCTGCAGGTAGTATCAAGACCCTGCCAGAACTCTGCTCGCCTCAGGATGAGCTGGATTTCTCATG
 GAGGCCCTCATCATCAGCAAGTTTCCGCATCAGAACATTGTGCGGTGTGTGGGGCTCAGCCTCAGGGCCA
 CCCCTCGCCTCATTCTGCTGAACTGATGTCTGGAGGGGACATGAAGAGTTTCTGAGGCACAGTCGGCC
 ACACCTGGGCCAGCCATCACCTCTGGTCTGCGGGACCTGCTGCAACTGGCCAGGACATAGCCAGGGC
 TGCCACTACCTGGAGGAAAATCACTTCACTCCACAGGGATATTGCCGCCCGGAACTGCCTGCTGAGCTGCG
 CTGGACCCAGCCGAGTGGCCAAGATTGGGGACTTTGGGATGGCAGGAGATATCTACCGGGCCAGTTATTA
 CCGCAGGGGGGACCGGCCTTGTCCCAGTCAAGTGGATGCCCCAGAGGCCCTTCTGGAGGGCATCTTC
 ACATCCAAGACAGATTCTGGTCTTTTGGGGTGTGCTCTGGGAGATCTTCTACTGGGTACATGCCCT
 ATCCTGGGCGCACCAACCAGGAGGTGCTGGACTTCGTGTTGGAGGAGGCCGATGGACCCTCTAGGGG
 CTGCCAGGGCCTGTGTACCGCATCATGACCCAGTGTGGCAGCACAAGCCTGAGCTCCGCCCTAGCTTT
 GCCAGCATCTTGGAGCGTCTGCAGTACTGCACTCAGGACCCGGATGTGCTGAATTCACCTCTGCCAATGG
 AGCTGGGGCCACCCAGAGGAGGAAGGACTTCTGGGCTGGGGAACAGATCTTTGGAGTGCCTAAGACC
 CCCACAGCCCCAGAACTGAGTCCAGAGAAGTTGAAAAGCTGGGGAGGTAGCCCTCTTGGCCCCTGGCTG
 TCCTCTGGCCTCAAGCCCTCAAATCCAGGGCCTCCAACCTCAGAACCCTTGAATCCCACTTATCGT
 CC

AG**CGGACCG**ACGCGTACGCGGCCGCTCGAGCAGAACTCATCTCAGAAGAGGATCTGGCAGCAAATGATATCC
 TGGATTACAAGGATGACGACGA TAAGGTTTAA

Protein Sequence: >RC402617 representing NM_002344
Red=Cloning site Green=Tags(s)

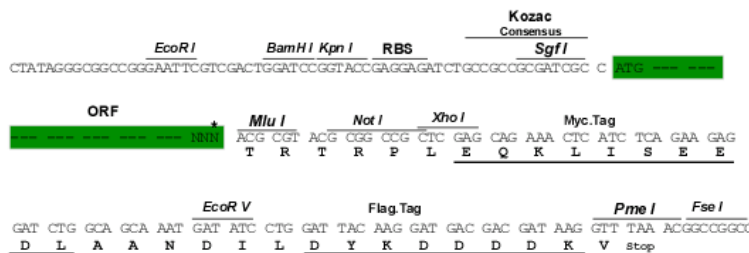
MGCWGQLLVWFGAAGAILCSSPGSQETFLRSSPLPLASPSRDPKVSAPPSILEPASPLNSPGTEGSWLF
 STCGASGRHGPTQTQCDGAYAGTSVVVTVGAAGQLRGVQLWRVPGPQYLISAYGAAGGKAKNHL SRAH
 GVFVSAIFSLGLGESLYILVGQQGEDACPGGSPESQLVCLGESRAVEEHAAMDGSEGVPSRRWAGGGGG
 GGGATYVFRVRAGELEPLLVAAGGGGRAYLRPRDRGRTQASPEKLENRSEAPGSGRGGGAAGGGGGWTSR
 APSPQAGRSLQEGAEGGQGCSEAWATLWAAAGGFGGGGGACTAGGGGGGYRGGDASETDLWADGEDGV
 SFIHPSSEFLQPLAVTENHGEVEIRRHLNCSHCPLRDCQWQAEQLAECLCPEGMELAVDNVTCMDLHK
 PPGPLVLMVAVVATSTLSLLMVCVGLILVKQKKWQGLQEMRLPSPELELSKLR TSAIRTAPNPYYCQVGL
 GPAQSWPLPPGVTEVSPANVTLLRALGHGAFGEVYEGLVIGLPGDSSPLQVAIKTLPEL CSPQDELDFLM
 EALIISKFRHQNIVRCVGLSLRATPRLILLEMSGGDMKSFLRHSRPHLGQPSPLVMRDLLQLAQDIAQG
 CHYLEENHF IHRDIAARNCLLSCAGPSRVAKIGDFGMARDIYRASYYRRGRDRALLPVKWPPEAFLEGIF
 TSKTDSWSFGVLLWEIFSLGYMPYPGRTNQEVLD FVGGGRMDPPRGCPGPVYRIMTQCWQHKEPRLPSF
 ASILERLQYCTQDPDLNSSLPMELGPTPEEEGTSGLGNRSLECLRPPQPQELSPEK LKSWGGSPLGPWL
 SSGLKPLKSRGLQPQLNWNPTYRS

SGPTRTRRLEQKLISEEDLAANDILDYKDDDDKV

Restriction Sites: SgfI-MluI

Cloning Scheme:

Cloning sites used for ORF Shutting:



* The last codon before the Stop codon of the ORF

OTI Disclaimer: The molecular sequence of this clone aligns with the gene accession number as a point of reference only. However, individual transcript sequences of the same gene can differ through naturally occurring variations (e.g. polymorphisms), each with its own valid existence. This clone is substantially in agreement with the reference, but a complete review of all prevailing variants is recommended prior to use. [More info](#)

OTI Annotation: This clone was engineered to express the complete ORF with an expression tag. Expression varies depending on the nature of the gene.

Components: The ORF clone is ion-exchange column purified and shipped in a 2D barcoded Matrix tube containing 10ug of transfection-ready, dried plasmid DNA (reconstitute with 100 ul of water).

RefSeq: [NP_002335](#)

RefSeq Size: 2592 bp

RefSeq ORF: 2595 bp

Locus ID: 4058

Cytogenetics: 15q15.1

Protein Families: Druggable Genome, Protein Kinase, Transmembrane

MW: 95 kDa

Gene Summary: The protein encoded by this gene is a member of the ros/insulin receptor family of tyrosine kinases. Tyrosine-specific phosphorylation of proteins is a key to the control of diverse pathways leading to cell growth and differentiation. Multiple transcript variants encoding different isoforms have been found for this gene. [provided by RefSeq, Oct 2008]