

Product datasheet for **RC402609**

FRK (NM_002031) Human Mutant ORF Clone

Product data:

Product Type:	Mutant ORF Clones
Product Name:	FRK (NM_002031) Human Mutant ORF Clone
Mutation Description:	R239X
Affected Codon#:	239
Affected NT#:	715
Nucleotide Mutation:	FRK Mutant (R239X), Myc-DDK-tagged ORF clone of Homo sapiens fyn-related kinase (FRK) as transfection-ready DNA
Effect:	Potential protein deficiency
Symbol:	FRK
Synonyms:	GTK; PTK5; RAK
E. coli Selection:	Kanamycin (25 ug/mL)
Mammalian Cell Selection:	Neomycin
Vector:	pCMV6-Entry (PS100001)
Tag:	Myc-DDK
ACCN:	NM_002031
ORF Size:	714 bp
Restriction Sites:	Sgfi-MluI



[View online »](#)

ORF Nucleotide Sequence:

>RC402609 representing NM_002031
 Red=Cloning site Blue=ORF Green=Tags(s)

TTTTGTAATACGACTCACTATAGGGCGGCCGGAATTCGTCGACTGGATCCGGTACCGAGGAGATCTGCC
 GCC**GCGATCGCC**

ATGAGCAACATCTGTCTCAGAGGCTCTGGGAGTACCTAGAACCCATCTCCCTGTTTGTCCACGGAGGCAG
 ACAAGTCAACCGTGATTGAAAATCCAGGGCCCTTTGCTCTCCCAGTACAGAGGCATGGCCACTACTT
 TGTGGCTTTGTTGATTACCAGGCTCGGACTGTGAGGACTTGAGCTTCCGAGCAGGTGACAAACTTCAA
 GTTCTGGACACTTTGCATGAGGGCTGGTGGTTTCCAGACACTTGGAGAAAAGACGAGATGGCTCCAGTC
 AGCAACTACAAGGCTATATTCCTTCTAACTACGTGGCTGAGGACAGAAGCCTACAGGCAGAGCCGTGGTT
 CTTTGGAGCAATCGAAGATCAGATGCAGAGAAAACAATTATTATTCAGAAAACAAGACCGGTTCTTTT
 CTAATCAGAGAAAAGTAAAGCCAAAAAGGAGAATTCTCTTTTCAGTTTATAGTGGAGCAGTTGTA
 AACACTACAGAATTAAGACTGGATGAAGGGGATTTTTTCTCACGGAAGAAGAATCTTTTCAACTGAA
 CGAATTTGTGAGCCACTACCCAAGACAAGTGACGGCCTGTGTGTCAAGCTGGGAAACCATGCTTAAAG
 ATCCAGTCCCAGCTCCATTTGATTTGCGTATAAACCGTGGACCAATGGGAGATAGACCGCAACTCCA
 TACAGTTCTGAAG

AG**CGGACCG**ACGCGTACGCGGCCGCTCGAGCAGAAACTCATCTCAGAAGAGGATCTGGCAGCAAATGATATCC
 TGGATTACAAGGATGACGACGA TAAGGTTTAA

Protein Sequence:

>RC402609 representing NM_002031
 Red=Cloning site Green=Tags(s)

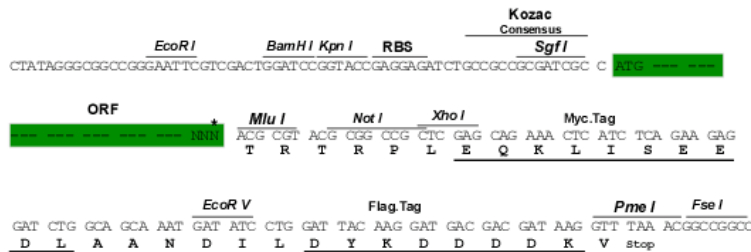
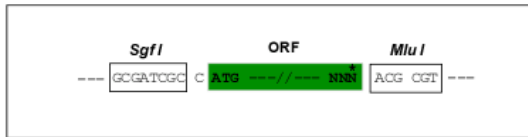
MSNICQRLWEYLEPYLPCLSTEADKSTVIENPGALCSPQSQRHGHYFVALFDYQARTAEDLSFRAGDKLQ
 VLDTLHEGWFFARHLEKRRDGSSQQLQGYIPSNVYAEDRSLQAEPWFFGAIGRSDAEKQLLYSENKTGSF
 LIRESESQKGEFSLVLDGAVVKHYRIKRLDEGGFFLTRRRIFSTLNEFVSHYTKTSDGLCVKLGKPLK
 IQVPAPFDLSYKTVDQWEIDRNSIQLLK

SGPTRRRLE**QKLI**SEEDLAANDILDYKDDDDKV

**Restriction Sites:
 Cloning Scheme:**

SgfI-MluI

Cloning sites used for ORF Shutting:



* The last codon before the Stop codon of the ORF

OTI Disclaimer:	The molecular sequence of this clone aligns with the gene accession number as a point of reference only. However, individual transcript sequences of the same gene can differ through naturally occurring variations (e.g. polymorphisms), each with its own valid existence. This clone is substantially in agreement with the reference, but a complete review of all prevailing variants is recommended prior to use. More info
OTI Annotation:	This clone was engineered to express the complete ORF with an expression tag. Expression varies depending on the nature of the gene.
Components:	The ORF clone is ion-exchange column purified and shipped in a 2D barcoded Matrix tube containing 10ug of transfection-ready, dried plasmid DNA (reconstitute with 100 ul of water).
Note:	Plasmids are not sterile. For experiments where strict sterility is required, filtration with 0.22um filter is required.
RefSeq:	NP_002022
RefSeq Size:	714 bp
RefSeq ORF:	1518 bp
Locus ID:	2444
Cytogenetics:	6q22.1
Domains:	pkinase, SH2, TyrKc, SH3, S_TKc
Protein Families:	Druggable Genome, Protein Kinase
MW:	26.2 kDa
Gene Summary:	The protein encoded by this gene belongs to the TYR family of protein kinases. This tyrosine kinase is a nuclear protein and may function during G1 and S phase of the cell cycle and suppress growth. [provided by RefSeq, Jul 2008]