

## Product datasheet for **RC402601**

### FLT4 (NM\_002020) Human Mutant ORF Clone

#### Product data:

Product Type:	Mutant ORF Clones
Product Name:	FLT4 (NM_002020) Human Mutant ORF Clone
Mutation Description:	D1055v
Affected Codon#:	1055
Affected NT#:	3164
Nucleotide Mutation:	FLT4 Mutant (D1055v), Myc-DDK-tagged ORF clone of Homo sapiens fms-related tyrosine kinase 4 (FLT4), transcript variant 2 as transfection-ready DNA
Effect:	Lymphoedema, primary
Symbol:	FLT4
Synonyms:	CHTD7; FLT-4; FLT41; LMPH1A; LMPHM1; PCL; VEGFR-3; VEGFR3
E. coli Selection:	Kanamycin (25 ug/mL)
Mammalian Cell Selection:	Neomycin
Vector:	pCMV6-Entry (PS100001)
Tag:	Myc-DDK
ACCN:	NM_002020
ORF Size:	3894 bp
Restriction Sites:	SgfI-MluI
ORF Nucleotide Sequence:	>RC402601 representing NM_002020 Red=Cloning site Blue=ORF Green=Tags(s)

TTTTGTAATACGACTCACTATAGGGCGGCCGGGAATTCGTCGACTGGATCCGGTACCGAGGAGATCTGCC  
GCC**GCGATCGCC**

ATGCAGCGGGGCGCCGCGCTGTGCCTGCGACTGTGGCTCTGCCTGGGACTCCTGGACGGCCTGGTGAGTG  
GCTACTCCATGACCCCCCGACCTTGAACATCACGGAGGAGTCACACGTCATCGACACCGGTGACAGCCT  
GTCCATCTCCTGCAGGGGACAGCACCCCTCGAGTGGGCTTGGCCAGGAGCTCAGGAGGCCAGCCACC  
GGAGACAAGGACAGCGAGGACACGGGGTGGTGCAGACTGCGAGGGCACAGACGCCAGGCCCTACTGCA  
AGGTGTTGCTGCTGCACGAGGTACATGCCAACGACACAGGCAGCTACGCTGCTACTACAAGTACATCAA  
GGCAGCATCGAGGGCACCGCCGCCAGCTCCTACGTGTTTCGTGAGAGACTTTGAGCAGCCATTATC  
AACAGCCTGACAGCTCTTGGTCAACAGGAAGGACGCCATGTGGGTGCCCTGTCTGGTGTCCATCCCCG



[View online »](#)

GCCTCAATGTCACGCTGCGCTCGCAAAGCTCGGTGCTGTGGCCAGACGGGCAGGAGGTGGTGTGGGATGA  
 CCGGCGGGGCATGCTCGTGTCCACGCCACTGCTGCACGATGCCCTGTACCTGCAGTGCAGAGACCCTGG  
 GGAGACCAGGACTTCCTTTCCAACCCCTTCTGGTGCACATCACAGGCAACGAGCTCTATGACATCCAGC  
 TGTTGCCAGGAAGTTCGCTGGAGCTGCTGGTAGGGGAGAAGCTGGTCTGAACTGCACCGTGTGGGCTGA  
 GTTTAACTCAGGTGTACCTTTGACTGGGACTACCCAGGAAGCAGGCAGAGCGGGTAAAGTGGGTGCC  
 GAGCGACGCTCCAGCAGACCCACAGAACTCTCCAGCATCTGACCATCCACAACGTCAGCCAGCAGC  
 ACCTGGGCTCGTATGTGTCAAAGGCCAACACGGCATCCAGCGATTTCCGGGAGAGCACCAGGATTTGT  
 GCATGAAAATCCCTTCATCAGCGTCGAGTGGCTCAAAGGACCCATCCTGGAGGCCACGGCAGGAGACGAG  
 CTGGTGAAGCTGCCCGTGAAGCTGGCAGCGTACCCCCGCCGAGTTCAGTGGTACAAGGATGGAAGG  
 CACTGTCCGGGCGCCACAGTCCACATGCCCTGGTGTCAAAGGAGGTGACAGAGGCCAGCACAGGCACCTA  
 CACCCTCGCCCTGTGAACTCCGCTGCTGGCCTGAGGCGCAACATCAGCCTGGAGCTGGTGGTGAATGTG  
 CCCCCCAGATACATGAGAAGGAGGCCCTCTCCCCAGCATCTACTCGCGTCACAGCCGCCAGGCCCTCA  
 CCTGCACGGCCTACGGGGTGGCCCTGCCTCTCAGCATCCAGTGGCACTGGCGGCCCTGGACACCTGCAA  
 GATGTTTGGCCAGCGTAGTCTCCGGCGCGGCAGCAGCAAGACCTCATGCCACAGTGGCCTGACTGGAGG  
 GCGGTGACCACGAGGATGCCGTGAACCCATCGAGAGCTGGACACCTGGACCGAGTTTGTGGAGGGAA  
 AGAATAAGACTGTGAGCAAGCTGGTGTATCCAGAATGCCAACGTGTCTGCCATGTACAAGTGTGTGGTCTC  
 CAACAAGTGGGCCAGGATGAGCGGCTCATCTACTTCTATGTGACCACCATCCCCGACGGCTTACCATC  
 GAATCCAAGCCATCCGAGGAGCTACTAGAGGGCCAGCCGGTGTCTCTGAGCTGCCAAGCCGACAGCTACA  
 AGTACGAGCATCTGCGCTGGTACCGCCTCAACCTGTCCACGCTGCACGATGCGCACGGGAACCCGCTTCT  
 GCTCGACTGCAAGAAGTGCATCTGTTCCGCCACCCCTCTGGCCGCCAGCTGGAGGAGGTGGACCTGGG  
 GCGCGCCACGCCACGCTCAGCCTGAGTATCCCCCGCTCGCGCCGAGCAGGAGGCCACTATGTGTGCG  
 AAGTGAAGACCGGCGCAGCCATGACAAGCACTGCCACAAGAAGTACCTGTGGTGCAGGCCCTGGAAGC  
 CCCTCGGCTCAGCAGAACTTGACCGACCTCTGGTGAACGTGAGCGACTCGTGGAGATGCAAGTCTGTTG  
 GTGGCCGAGCGCAGCGCCAGCATCTGTGGTACAAGACGAGAGGCTGCTGGAGGAAAAGTCTGGAG  
 TCGACTTGGCGGACTCCAACCAGAAGCTGAGCATCCAGCGCTGCGCGAGGAGGATGCGGGACGCTATCT  
 GTGACGCTGTGCAACGCCAAGGGCTGCGTCAACTCCTCCGCCAGCGTGGCCGTGGAAGGCTCCGAGGAT  
 AAGGGCAGCATGGAGATCGTGATCCTTGTGCGTACCGCGTCATCGTGTCTTCTTCTGGGTCTCTCTCC  
 TCCTCATCTTCTGTAACATGAGGAGGCCGCCACGCAGACATCAAGACGGGCTACCTGTCCATCATCAT  
 GGACCCCGGGGAGGTGCCTCTGGAGGAGCAATGCGAATACCTGTCTACGATGCCAGCCAGTGGGAATTC  
 CCCCAGAGCGGCTGCACCTGGGAGAGTGTCTGGCTACGGCGCCTTCGGGAAGTGGTGAAGCCTCCG  
 CTTTCCGATCCACAAGGGCAGCAGCTGTGACACCGTGGCCGTGAAAATGCTGAAAGAGGGGCCACGGC  
 CAGCGACACCGCGCTGATGTGCGAGCTCAAGATCCTATTACATCGGCAACCACCTCAACGTGGTC  
 AACCTCCTCGGGCGTGCACCAAGCCGAGGGCCCCCTCATGGTGTGCTGGAGTTCTGCAAGTACGGCA  
 ACCTCTCCAATTCTGCGCGCCAAGCGGGACGCCCTTACGCCCTGCGCGGAGAAGTCTCCCAGCAGCG  
 CGGACGCTTCCGCGCCATGGTGGAGCTCGCCAGGCTGGATCGGAGGCGGCGGGGAGCAGCGACAGGGTC  
 CTCTTCCGCGGTTCTCGAAGACCGAGGGCGGAGCGAGGCGGGCTTCTCCAGACCAAGAAGCTGAGGACC  
 TGTGGCTGAGCCCGTACCATGGAAGATCTTGTCTGTACAGCTTCCAGGTGGCCAGAGGGATGGAGTT  
 CCTGGCTTCCGAAAGTGCATCCACAGAGACCTGGCTGCTCGGAACATTCTGCTGCGAAAGCGACGTG  
 CCGGCTGCCCTGAAAGTGGATGGCCCTGAAAGCATCTTCGACAAGGTGTACACCACGCAGAGTGACGT  
 GTGGTCTTTGGGGTCTTCTCTGGGAGATCTTCTCTCTGGGGCCTCCCCGTACCCTGGGGTGCAGATC  
 AATGAGGAGTTCTGCCAGCGCTGAGAGACGGCACAAGGATGAGGGCCCCGAGCTGGCCACTCCCGCCA  
 TACGCCGATCATGCTGAACTGCTGGTCCGGAGACCCCAAGGCGAGACCTGCATTCTCGGAGCTGGTGA  
 GATCCTGGGGACCTGCTCCAGGGCAGGGCCTGCAAGAGGAAGAGGAGGTCTGCATGGCCCCGCGCAGC  
 TCTCAGAGCTCAGAAGAGGGCAGCTTCTCGCAGGTGTCCACCATGGCCCTACACATCGCCCAGGCTGACG  
 CTGAGGACAGCCGCCAAGCCTGCAGCGCCACAGCCTGGCCGCCAGGTATTACAAGTGGGTGCTTTCC  
 CGGGTGCCTGGCCAGAGGGGCTGAGACCGTGGTTCCTCCAGGATGAAGACATTTGAGGAATTTCCCATG  
 ACCCCAACGACCTACAAAGGCTCTGTGGACAACCAGACAGACAGTGGGATGGTGTGGCCTCGGAGGAGT  
 TTGAGCAGATAGAGAGCAGGCATAGACAAGAAAGCGGCTTCAGG

AGCGGACCGACGCGTACGCGCCGCTCGAGCAGAACTCATCTCAGAAGAGGATCTGGCAGCAAATGATATCC  
 TGGATTACAAGGATGACGACGA TAAGGTTTAA

**Protein Sequence:** >RC402601 representing NM\_002020  
 Red=Cloning site Green=Tags(s)

MQRGAALCLRLWLCGLLDGLVSGYSMTPTLNITEESHVIDTGDSLISICRQHPLEWAWPGAQEAPAT  
 GDKDSEDTGVVRDCEGTDARPYCKVLLLEHVHANDTGSYVCYKYIKARIEGTTAASSYFVRDFEQPFI  
 NKPDTLLVNRKDAMWVPLVSIPLNVTLSRQSSVLWPDGQEVVWDDRRGMLVSTPLLDHALYLQCETTW  
 GDQDFLSNPFLVHITGNELYDIQLLPRKLELLVGEKLVNCTVWAEFNSGVTFDWDYPGKQAERGWVP  
 ERRSQQTHTESSILTIHNVSQHDLSYVCKANNGIQRFRESTEIVHENPFISVEWLKGPILEATAGDE  
 LVKLPVKLAAYPPPEFQWYKDGKALSGRHSPHALVLKEVTEASTGTYTLALWNSAAGLRRNISLELVVNV  
 PPQIHEKEASSPSIYSRHSRQALTCTAYGVPLPLSIQWHWRPWPCKMFAQRSLRRRQQQLMPQCRDWR  
 AVTTQDAVNPIESLDTWTEFVEGKNKTVSKLVIQNAVNSAMYKCVSNKVGQDERLIYFYVTTIPDGFTI  
 ESKPSEELLEGGQPVLLSCQADSYKYEHLRWYRLNLSTLHDAHGNPLLLDCKNVHLFATPLAASLEEVAPG  
 ARHATLSLSIPRVAPEHEGHYVCEVQDRRSHDKHCHKKYL SVQALEAPRLTQNL TDLLVNVSDSLEMQCL  
 VAGAHAPSIWYKDERLLEEKSGVDLADSNQKLSIQRVREEDAGRYLCSVCNAKGCVNSSASVAVEGSED  
 KGSMEIVILVGTGVIIVFFWVLLLLIFCNMRRPAHADIKTGYSIIMDPGEVPLEEQCEYL SYDASQWEP  
 PRERLHLGRVLGYGAFGKVVVEASAFGIHKGSSCDTVAVKMLKEGATASEHRALMSELKILIHIGNHLNVV  
 NLLGACTKPQGPLMVIVEFCKYGNLSNFLRAKRDAFSPCAEKSPQGRFRAMVELARLDRRRPGSSDRV  
 LFARFSKTEGGARRASPDQEAEDLWLSPLTMEDLVCYSFQVARGMEFLASRCKIHRDLAARNILLSESDV  
 VKICVFLGARDIYKDPDYVRKGSARLPLKWMAPESIFDKVYTTQSDVWSFGVLLWEIFSLGASPYGVQI  
 NEEFCQRLRDGTRMRAPELATPAIRIIMLNCWSDGPKARPAFSELVEILGDLLQGRGLQEEEEVCMAPRS  
 SSSSEEGSFQVSTMALHIAQADAEDSPPSLQRHSLAARYNWSVFPGLARGAETRGSRRMKTFFEFPM  
 TPTTYKGSVDNQTDSGMVLASEEFEQIESRHRQESGFR

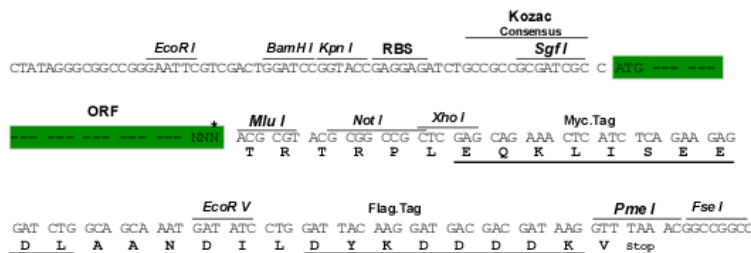
SGPTRRRLEQKLI SEEDLAANDILDYKDDDDKV

**Restriction Sites:**

Sgfl-MluI

**Cloning Scheme:**

Cloning sites used for ORF Shutting:



\* The last codon before the Stop codon of the ORF

**OTI Disclaimer:**

The molecular sequence of this clone aligns with the gene accession number as a point of reference only. However, individual transcript sequences of the same gene can differ through naturally occurring variations (e.g. polymorphisms), each with its own valid existence. This clone is substantially in agreement with the reference, but a complete review of all prevailing variants is recommended prior to use. [More info](#)

<b>OTI Annotation:</b>	This clone was engineered to express the complete ORF with an expression tag. Expression varies depending on the nature of the gene.
<b>Components:</b>	The ORF clone is ion-exchange column purified and shipped in a 2D barcoded Matrix tube containing 10ug of transfection-ready, dried plasmid DNA (reconstitute with 100 ul of water).
<b>RefSeq:</b>	<u>NP_002011</u>
<b>RefSeq Size:</b>	3894 bp
<b>RefSeq ORF:</b>	3897 bp
<b>Locus ID:</b>	2324
<b>Cytogenetics:</b>	5q35.3
<b>Domains:</b>	pkinase, TyrKc, S_TKc, ig, IGc2, IG
<b>Protein Families:</b>	Druggable Genome, Protein Kinase, Transmembrane
<b>Protein Pathways:</b>	Cytokine-cytokine receptor interaction, Focal adhesion
<b>MW:</b>	142.8 kDa
<b>Gene Summary:</b>	This gene encodes a tyrosine kinase receptor for vascular endothelial growth factors C and D. The protein is thought to be involved in lymphangiogenesis and maintenance of the lymphatic endothelium. Mutations in this gene cause hereditary lymphedema type IA. [provided by RefSeq, Jul 2008]