

## Product datasheet for **RC402580**

### FLT4 (NM\_002020) Human Mutant ORF Clone

#### Product data:

Product Type:	Mutant ORF Clones
Product Name:	FLT4 (NM_002020) Human Mutant ORF Clone
Mutation Description:	G854R
Affected Codon#:	854
Affected NT#:	2560
Nucleotide Mutation:	FLT4 Mutant (G854R), Myc-DDK-tagged ORF clone of Homo sapiens fms-related tyrosine kinase 4 (FLT4), transcript variant 2 as transfection-ready DNA
Effect:	Lymphoedema, primary
Symbol:	FLT4
Synonyms:	CHTD7; FLT-4; FLT41; LMPH1A; LMPHM1; PCL; VEGFR-3; VEGFR3
E. coli Selection:	Kanamycin (25 ug/mL)
Mammalian Cell Selection:	Neomycin
Vector:	pCMV6-Entry (PS100001)
Tag:	Myc-DDK
ACCN:	NM_002020
ORF Size:	3894 bp
Restriction Sites:	SgfI-MluI
ORF Nucleotide Sequence:	>RC402580 representing NM_002020 Red=Cloning site Blue=ORF Green=Tags(s)

TTTTGTAATACGACTCACTATAGGGCGCCGGGAATTCGTCGACTGGATCCGGTACCGAGGAGATCTGCC  
GCC**CGATCGCC**

ATGCAGCGGGCGCCGCGCTGTGCCTGCGACTGTGGCTCTGCCTGGGACTCCTGGACGGCCTGGTGAAGT  
GCTACTCCATGACCCCCCGACCTTGAACATCACGGAGGAGTCACACGTCATCGACACCGGTGACAGCCT  
GTCCATCTCCTGCAGGGGACAGCACCCCTCGAGTGGGCTTGGCCAGGAGCTCAGGAGGCCAGCCACC  
GGAGACAAGGACAGCGAGGACACGGGGTGGTGCAGACTGCGAGGGCACAGACGCCAGGCCCTACTGCA  
AGGTGTTGCTGCTGCACGAGGTACATGCCAACGACACAGGCAGCTACGCTGCTACTACAAGTACATCAA  
GGCAGCATCGAGGGCACCGCCGAGCTCCTACGTGTTTCGTGAGAGACTTTGAGCAGCCATTATC  
AACAGCCTGACAGCTCTTGGTCAACAGGAAGGACGCCATGTGGGTGCCCTGTCTGGTGTCCATCCCCG



[View online »](#)

GCCTCAATGTCACGCTGCGCTCGCAAAGCTCGGTGCTGTGGCCAGACGGGCAGGAGGTGGTGTGGGATGA  
 CCGGCGGGGCATGCTCGTGTCCACGCCACTGCTGCACGATGCCCTGTACCTGCAGTGCAGAGACCCTGG  
 GGAGACCAGGACTTCCTTTCCAACCCCTTCTGGTGCACATCACAGGCAACGAGCTCTATGACATCCAGC  
 TGTTGCCAGGAAGTCTGAGCTGCTGGTAGGGGAGAAGCTGGTCTGAACTGCACCGTGTGGGCTGA  
 GTTTAACTCAGGTGTACCTTTGACTGGGACTACCCAGGAAGCAGGCAGAGCGGGTAAAGTGGGTGCC  
 GAGCGACGCTCCAGCAGACCCACAGAAGCTCCAGCATCTGACCATCCACAACGTCAGCCAGCAGC  
 ACCTGGGCTCGTATGTGTCAAAGGCCAACACGGCATCCAGCGATTTCCGGGAGAGCACCAGGATTTGT  
 GCATGAAAATCCCTTCATCAGCGTCGAGTGGCTCAAAGGACCCATCCTGGAGGCCACGGCAGGAGACGAG  
 CTGGTGAAGCTGCCCGTGAAGCTGGCAGCGTACCCCCGCCGAGTTCAGTGGTACAAGGATGGAAGG  
 CACTGTCCGGGCGCCACAGTCCACATGCCCTGGTGTCAAAGGAGTGACAGAGGCCAGCACAGGCACCTA  
 CACCCTCGCCCTGTGAACTCCGCTGCTGGCCTGAGGCGCAACATCAGCCTGGAGCTGGTGGTGAATGTG  
 CCCCCCAGATACATGAGAAGGAGGCCCTCCTCCCCAGCATCTACTCGCGTCACAGCCGCCAGGCCCTCA  
 CCTGCACGGCCTACGGGGTGCCCTGCCTCTCAGCATCCAGTGGCACTGGCGGCCCTGGACACCTGCAA  
 GATGTTTGGCCAGCGTAGTCTCCGGCGGCGCAGCAGCAAGACCTCATGCCACAGTCCCGTACTGGAGG  
 GCGGTGACCACGAGGATGCCGTGAACCCATCGAGAGCTGGACACCTGGACCGAGTTTGTGGAGGGAA  
 AGAATAAGACTGTGAGCAAGCTGGTGTATCCAGAATGCCAACGTGTCTGCCATGTACAAGTGTGTGGTCTC  
 CAACAAGTGGGCCAGGATGAGCGGCTCATCTACTTCTATGTGACCACATCCCCGACGGCTTACCATC  
 GAATCCAAGCCATCCGAGGAGCTACTAGAGGGCCAGCCGGTGTCTCTGAGCTGCCAAGCCGACAGCTACA  
 AGTACGAGCATCTGCGTGGTACCGCCTCAACCTGTCCACGCTGCACGATGCGCACGGGAACCCGCTTCT  
 GCTCGACTGCAAGAAGTGCATCTGTTCCGCCACCCCTTGCCGCCAGCCTGGAGGAGGTGGCACCTGGG  
 GCGGCCACGCCACGCTCAGCCTGAGTATCCCCCGCTCGCGCCGAGCAGGAGGCCACTATGTGTGCG  
 AAGTGAAGACCGGCGCAGCCATGACAAGCACTGCCACAAGAAGTACCTGTGGTGCAGGCCCTGGAAGC  
 CCCTCGGCTCAGCAGAAGTTGACCCAGCTCTGGTGAACGTGAGCGACTCGTGGAGATGCAAGTGTG  
 GTGGCCGAGCGCAGCCGCCAGCATCTGTGGTACAAGACGAGAGGCTGCTGGAGGAAAAGTCTGGAG  
 TCGACTTGGCGGACTCCAACCAGAAGCTGAGCATCCAGCGCTGCGCGAGGAGGATGCGGGACGCTATCT  
 GTGACGCTGTGCAACGCCAAGGGCTGCGTCAACTCCTCCGCCAGCGTGGCCGTGGAAGGCTCCGAGGAT  
 AAGGGCAGCATGGAGATCGTATCCTTGTGCGTACCGCGTCACTCGTGTCTTCTTCTGGGTCTCTCTC  
 TCCTCATCTTCTGTAACATGAGGAGGCCGCCACGCAGACATCAAGACGGGCTACCTGTCCATCATCAT  
 GGACCCCGGGGAGGTGCCTCTGGAGGAGCAATGCGAATACCTGTCTACGATGCCAGCCAGTGGGAATTC  
 CCCCAGAGCGGCTGCACCTGGGAGAGTGTCTGGCTACCGCGCCTTCGGGAAGTGGTGAAGCCTCCG  
 CTTTCCGATCCACAAGGGCAGCAGCTGTGACACCGTGGCCGTGAAAATGCTGAAAGAGGGGCCACGGC  
 CAGCGACACCCGCGCTGATGTGCGAGCTCAAGATCCTATTACATCGGCAACCACCTCAACGTGGTC  
 AACCTCCTCGGGCGTGCACCAAGCCGAGGGCCCCCTCATGGTGTGCTGGAGTTCTGCAAGTACGGCA  
 ACCTCTCCAATTCTGCGCGCCAAGCGGGACGCCCTTACGCCCTGCGCGGAGAAGTCTCCCAGCAGCG  
 CGGACGCTTCCGCGCCATGGTGGAGCTCGCCAGGCTGGATCGGAGGCGGCGGGGAGCAGCGACAGGGTC  
 CTCTTCCGCGGTTCTCGAAGACCGAGGGCGGAGCGAGGCGGGCTTCTCCAGACCAAGAAGTGGAGACC  
 TGTGGCTGAGCCCGTACCATGGAAGATCTTGTCTGTACAGCTTCCAGGTGGCCAGAGGGATGGAGTT  
 CCTGGCTTCCGAAAGTGCATCCACAGAGACCTGGCTGCTCGGAACATTCTGCTGTGGAAGCGACGTG  
 GTGAAGATCTGTGACTTTGGCCTTGCCCGGACATCTACAAGACCCCGACTACGTCCGCAAGGGCAGTG  
 CCCGGCTGCCCTGAAAGTGGATGGCCCTGAAAGCATCTTCGACAAGGTGTACACCACGCAGAGTGACGT  
 GTGGTCTTTGGGTGCTTCTCTGGGAGATCTTCTCTTGGGGCCTCCCGTACCCTGGGGTGCAGATC  
 AATGAGGAGTTCTGCCAGCGCTGAGAGACGGCACAAGGATGAGGGCCCCGAGCTGGCCACTCCCGCCA  
 TACGCCGATCATGCTGAACTGCTGGTCCGGAGACCCCAAGGCGAGACCTGCATTCTCGGAGCTGGTGA  
 GATCCTGGGGACCTGCTCCAGGGCAGGGGCTGCAAGAGGAAGAGGAGGTCTGCATGGCCCCGCGCAGC  
 TCTCAGAGCTCAGAAGAGGGCAGCTTCTCGCAGGTGTCCACATGGCCCTACACATCGCCCAGGCTGACG  
 CTGAGGACAGCCGCCAAGCCTGCAGCGCCACAGCCTGGCCGCCAGGTATTACAAGTGGGTGCTTTCC  
 CGGGTGCCTGGCCAGAGGGGCTGAGACCGTGGTTCCTCCAGGATGAAGACATTTGAGGAATTTCCCATG  
 ACCCCAACGACCTACAAGGCTCTGTGACAACCAGACAGACAGTGGGATGGTGTGGCCTCGGAGGAGT  
 TTGAGCAGATAGAGAGCAGGCATAGACAAGAAAGCGGCTTCAGG

AGCGGACCGACGCGTACGCGCCGCTCGAGCAGAAACTCATCTCAGAAGAGGATCTGGCAGCAAATGATATCC  
 TGGATTACAAGGATGACGACGA TAAGGTTTAA

**Protein Sequence:** >RC402580 representing NM\_002020  
 Red=Cloning site Green=Tags(s)

```

MQRGAALCLRLWLCGLLDGLVSGYSMTPTLNITEESHVIDTGDSLISICRQHPLEWAWPGAQEAPAT
GDKDSEDTGVVRDCEGTDARPYCKVLLLEHVHANDTGSYVCYKYIKARIEGTTAASSYVFVRDFEQPFI
NKPDTLLVNRKDAMWVPLVSIPLNVTLSRQSSVLWPDGQEVVWDDRRGMLVSTPLLDHALYLQETTWW
GDQDFLSNPFLVHITGNELYDIQLLPRKLELLVGEKLVNCTVWAEFNSGVTFDWDYPGKQAERGWVP
ERRSQQTHTESSILTIHNVSQHDLSYVCKANNGIQRFRESTEVIHNPFIISVEWLKGPFILEATAGDE
LVKLPVKLAAYPPPEFQWYKDGKALSGRHSPHALVLKEVTEASTGTYTLALWNSAAGLRRNISLELVVNV
PPQIHEKEASSPSIYSRHSRQALTCTAYGVPLPLSIQWHWRPWPCKMFAQRSLRRRQQQLMPQCRDWR
AVTTQDAVNPIESLDTWTEFVEGKNKTVSKLVIQNAVNSAMYKCVSNKVQDERLIYFYVTTIPDGFTI
ESKPSEELLEGGQPVLLSCQADSYKYEHLRWYRLNLSTLHDAHGNPLLLDCKNVHLFATPLAASLEEVAPG
ARHATLSLSIPRVAPEHEGHYVCEVQDRRSHDKHCHKKYL SVQALEAPRLTQNL TDLLVNVSDSLEMQCL
VAGAHAPSIWVYKDERLLEEKSGVDLADSNQKLSIQRVREEDAGRYLCSVCNAKGCVNSSASVAVEGSED
KGSMEIVILVGTGVIIVFFWVLLLLIFCNMRRPAHADIKTGYSIIMDPGEVPLEEQCEYL SYDASQWEF
PRERLHLGRVLGYRAFVKVVEASAFGIHKGSSCDTVAVKMLKEGATASEHRALMSELKILIHIGNHLNVV
NLLGACTKPQGPLMVIVEFCKYGNLSNFLRAKRDAFSPCAEKSPQGRFRAMVELARLDRRRPGSSDRV
LFARFSKTEGGARRASPDQEAEDLWLSPLTMEDLVCYSFQVARGMEFLASRKC IHRDLAARNILLSESDV
VKICDFGLARDIYKDPDYVRKGSARLPLKWMAPESIFDKVYTTQSDVWSFGVLLWEIFSLGASPYGVQI
NEEFCQRLRDGTRMRAPELATPAIRIIMLNCWSDGPKARPAFSELVEILGDLLQGRGLQEEEEVCMAPRS
SQSSEEGSFQVSTMALHIAQADAEDSPPSLQRHSLAARYNWSVFPGLARGAETRGSRRMKTFFEEFPM
TPTTYKGSVDNQTDSGMVLASEEFEQIESRHRQESGFR
  
```

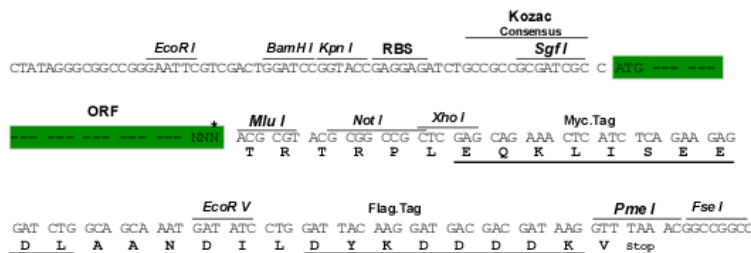
SGPTRRRLEQKLI SEEDLAANDILDYKDDDDKV

**Restriction Sites:**

Sgfl-MluI

**Cloning Scheme:**

Cloning sites used for ORF Shutting:



\* The last codon before the Stop codon of the ORF

**OTI Disclaimer:**

The molecular sequence of this clone aligns with the gene accession number as a point of reference only. However, individual transcript sequences of the same gene can differ through naturally occurring variations (e.g. polymorphisms), each with its own valid existence. This clone is substantially in agreement with the reference, but a complete review of all prevailing variants is recommended prior to use. [More info](#)

<b>OTI Annotation:</b>	This clone was engineered to express the complete ORF with an expression tag. Expression varies depending on the nature of the gene.
<b>Components:</b>	The ORF clone is ion-exchange column purified and shipped in a 2D barcoded Matrix tube containing 10ug of transfection-ready, dried plasmid DNA (reconstitute with 100 ul of water).
<b>RefSeq:</b>	<u>NP_002011</u>
<b>RefSeq Size:</b>	3894 bp
<b>RefSeq ORF:</b>	3897 bp
<b>Locus ID:</b>	2324
<b>Cytogenetics:</b>	5q35.3
<b>Domains:</b>	pkinase, TyrKc, S_TKc, ig, IGc2, IG
<b>Protein Families:</b>	Druggable Genome, Protein Kinase, Transmembrane
<b>Protein Pathways:</b>	Cytokine-cytokine receptor interaction, Focal adhesion
<b>MW:</b>	142.8 kDa
<b>Gene Summary:</b>	This gene encodes a tyrosine kinase receptor for vascular endothelial growth factors C and D. The protein is thought to be involved in lymphangiogenesis and maintenance of the lymphatic endothelium. Mutations in this gene cause hereditary lymphedema type IA. [provided by RefSeq, Jul 2008]