

## Product datasheet for **RC402579**

### FLT4 (NM\_002020) Human Mutant ORF Clone

#### Product data:

|                           |  |
|---------------------------|--|
| Product Type:             | Mutant ORF Clones  |
| Product Name:             | FLT4 (NM_002020) Human Mutant ORF Clone  |
| Mutation Description:     | G854S  |
| Affected Codon#:          | 854  |
| Affected NT#:             | 2560   |
| Nucleotide Mutation:      | FLT4 Mutant (G854S), Myc-DDK-tagged ORF clone of Homo sapiens fms-related tyrosine kinase 4 (FLT4), transcript variant 2 as transfection-ready DNA |
| Effect:                   | Lymphoedema, primary   |
| Symbol:                   | FLT4   |
| Synonyms:                 | CHTD7; FLT-4; FLT41; LMPH1A; LMPHM1; PCL; VEGFR-3; VEGFR3  |
| E. coli Selection:        | Kanamycin (25 ug/mL)   |
| Mammalian Cell Selection: | Neomycin   |
| Vector:                   | pCMV6-Entry (PS100001)   |
| Tag:                      | Myc-DDK  |
| ACCN:                     | NM_002020  |
| ORF Size:                 | 3894 bp  |
| Restriction Sites:        | SgfI-MluI  |
| ORF Nucleotide Sequence:  | >RC402579 representing NM_002020<br>Red=Cloning site Blue=ORF Green=Tags(s)  |

TTTTGTAATACGACTCACTATAGGGCGGCCGGGAATTCGTCGACTGGATCCGGTACCGAGGAGATCTGCC  
GCC**CGATCGCC**

ATGCAGCGGGCGCCGCGCTGTGCCTGCGACTGTGGCTCTGCCTGGGACTCCTGGACGGCCTGGTGAGTG  
GCTACTCCATGACCCCCCGACCTTGAACATCACGGAGGAGTCACACGTCATCGACACCGGTGACAGCCT  
GTCCATCTCCTGCAGGGGACAGCACCCCTCGAGTGGGCTTGGCCAGGAGCTCAGGAGGCCAGCCACC  
GGAGACAAGGACAGCGAGGACACGGGGTGGTGCAGACTGCGAGGGCACAGACGCCAGGCCCTACTGCA  
AGGTGTTGCTGCTGCACGAGGTACATGCCAACGACACAGGCAGCTACGCTGCTACTACAAGTACATCAA  
GGCAGCATCGAGGGCACCGCCGCCAGCTCCTACGTGTTTCGTGAGAGACTTTGAGCAGCCATTATC  
AACAGCCTGACAGCTCTTGGTCAACAGGAAGGACGCCATGTGGGTGCCCTGTCTGGTGTCCATCCCCG



[View online »](#)

GCCTCAATGTCACGCTGCGCTCGCAAAGCTCGGTGCTGTGGCCAGACGGGCAGGAGGTGGTGTGGGATGA  
 CCGGCGGGGCATGCTCGTGTCCACGCCACTGCTGCACGATGCCCTGTACCTGCAGTGCAGAGACCCTGG  
 GGAGACCAGGACTTCCTTTCAACCCCTTCTGGTGCACATCACAGGCAACGAGCTCTATGACATCCAGC  
 TGTTGCCCAGGAAGTCTGCTGGAGCTGCTGGTAGGGGAGAAGCTGGTCTGAACTGCACCGTGTGGGCTGA  
 GTTTAACTCAGGTGTACCTTTGACTGGGACTACCCAGGAAGCAGGCAGAGCGGGTAAAGTGGGTGCC  
 GAGCGACGCTCCAGCAGACCCACAGAAGCTCCAGCATCTGACCATCCACAACGTACGCCAGCAGCAG  
 ACCTGGGCTCGTATGTGTCAAAGGCCAACACGGCATCCAGCGATTTCCGGGAGAGCACCAGGATTTGT  
 GCATGAAAATCCCTTCATCAGCGTCGAGTGGCTCAAAGGACCCATCCTGGAGGCCACGGCAGGAGACGAG  
 CTGGTGAAGCTGCCCGTGAAGCTGGCAGCGTACCCCCGCCGAGTTCAGTGGTACAAGGATGGAAGG  
 CACTGTCCGGGCGCCACAGTCCACATGCCCTGGTGTCAAAGGAGGTGACAGAGGCCAGCACAGGCACCTA  
 CACCCTCGCCCTGTGAACTCCGCTGCTGGCCTGAGGCACAACATCAGCCTGGAGCTGGTGGTGAATGTG  
 CCCCCCAGATACATGAGAAGGAGGCCCTCTCCCCAGCATCTACTCGCGTCACAGCCGCCAGGCCCTCA  
 CCTGCACGGCCTACGGGGTGGCCCTGCCTCTCAGCATCCAGTGGCACTGGCGGCCCTGGACACCTGCAA  
 GATGTTTGGCCAGCGTAGTCTCCGGCGCGGCAGCAGCAAGACCTCATGCCACAGTGGCCTGACTGGAGG  
 GCGGTGACCACGCAGGATGCCGTGAACCCATCGAGAGCTGGACACCTGGACCGAGTTTGTGGAGGGAA  
 AGAATAAGACTGTGAGCAAGCTGGTGTATCCAGAATGCCAACGTGTCTGCCATGTACAAGTGTGTGGTCTC  
 CAACAAGTGGGCCAGGATGAGCGGCTCATCTACTTCTATGTGACCACCATCCCCGACGGCTTACCATC  
 GAATCCAAGCCATCCGAGGAGCTACTAGAGGGCCAGCCGGTGTCTCTGAGCTGCCAAGCCGACAGCTACA  
 AGTACGAGCATCTGCGCTGGTACCGCCTCAACCTGTCCACGCTGCACGATGCGCACGGGAACCCGCTTCT  
 GCTCGACTGCAAGAAGTGCATCTGTTCCGCCACCCCTCTGGCCGCCAGCTGGAGGAGGTGGCACCTGGG  
 GCGGCCACGCCACGCTCAGCCTGAGTATCCCCCGCTCGCGCCGAGCAGGAGGCCACTATGTGTGCG  
 AAGTGAAGACCGGCGCAGCCATGACAAGCACTGCCACAAGAAGTACCTGTGGTGCAGGCCCTGGAAGC  
 CCCTCGGCTCACGAGAAGTTGACCCAGCTCTGGTGAACGTGAGCGACTCGTGGAGATGCAAGTCTGTTG  
 GTGGCCGAGCGCACGCCCCAGCATCTGTGGTACAAGACGAGAGGCTGCTGGAGGAAAAGTCTGGAG  
 TCGACTTGGCGGACTCCAACAGAAGCTGAGCATCCAGCGCTGCGCGAGGAGGATGCGGGACGCTATCT  
 GTGACGCTGTGCAACGCCAAGGGCTGCGTCAACTCCTCCGCCAGCGTGGCCGTGGAAGGCTCCGAGGAT  
 AAGGGCAGCATGGAGATCGTGATCCTTGTGCGTACCGCGTCATCGTGTCTTCTTCTGGGTCTCTCTC  
 TCCTCATCTTCTGTAACATGAGGAGGCCGCCACGCAGACATCAAGACGGGCTACCTGTCCATCATCAT  
 GGACCCCGGGGAGGTGCCTCTGGAGGAGCAATGCGAATACCTGTCTACGATGCCAGCCAGTGGGAATTC  
 CCCCAGAGCGGCTGCACCTGGGAGAGTGTCTGGCTACAGCGCCTTCGGGAAGTGGTGAAGCCTCCG  
 CTTTCCGATCCACAAGGGCAGCAGCTGTGACACCGTGGCCGTGAAAATGCTGAAAGAGGGGCCACGGC  
 CAGCGACACCCGCGCTGATGTGCGAGCTCAAGATCCTATTACATCGGCAACCACCTCAACGTGGTC  
 AACCTCCTCGGGCGTGCACCAAGCCGAGGGCCCCCTCATGGTGTGCTGGAGTTCTGCAAGTACGGCA  
 ACCTCTCCAATTCTGCGCGCCAAGCGGGACGCCCTCAGCCCTGCGCGGAGAAGTCTCCCAGCAGCG  
 CGGACGCTTCCGCGCCATGGTGGAGCTCGCCAGGCTGGATCGGAGGCGGCGGGGAGCAGCGACAGGGTC  
 CTCTTCCGCGGTTCTCGAAGACCGAGGGCGGAGCGAGGCGGGCTTCTCCAGACCAAGAAGCTGAGGACC  
 TGTGGCTGAGCCCGTACCATGGAAGATCTTGTCTGTACAGCTTCCAGGTGGCCAGAGGGATGGAGTT  
 CCTGGCTTCCGAAAGTGCATCCACAGAGACCTGGCTGCTCGGAACATTCTGTGTGCGAAAGCGACGTG  
 CCGGCTGCCCTGAAAGTGGATGGCCCTGAAAGCATCTTCGACAAGGTGTACACCACGCAGAGTGACGT  
 GTGGTCTTTGGGTGCTTCTCTGGGAGATCTTCTCTTGGGGCCTCCCGTACCCTGGGGTGCAGATC  
 AATGAGGAGTTCTGCCAGCGCTGAGAGACGGCACAAGGATGAGGGCCCCGAGCTGGCCACTCCCGCCA  
 TACGCCGATCATGCTGAACTGCTGGTCCGGAGACCCCAAGGCGAGACCTGCATTCTCGGAGCTGGTGA  
 GATCCTGGGGACCTGCTCCAGGGCAGGGCCTGCAAGAGGAAGAGGAGGTCTGCATGGCCCCGCGCAGC  
 TCTCAGAGCTCAGAAGAGGGCAGCTTCTCGAGGTGTCCACCATGGCCCTACACATCGCCAGGCTGACG  
 CTGAGGACAGCCGCCAAGCCTGCAGCGCCACAGCCTGGCCGCCAGGTATTACAAGTGGGTGCTTTCC  
 CGGGTGCCTGGCCAGAGGGGCTGAGACCGTGGTTCCTCCAGGATGAAGACATTTGAGGAATTTCCCATG  
 ACCCAACGACCTACAAAGGCTCTGTGACAACCAGACAGACAGTGGGATGGTGTGGCCTCGGAGGAGT  
 TTGAGCAGATAGAGAGCAGGCATAGACAAGAAAGCGGCTTCAGG

AGCGGACCGACGCGTACGCGCCGCTCGAGCAGAACTCATCTCAGAAGAGGATCTGGCAGCAAATGATATCC  
 TGGATTACAAGGATGACGACGA TAAGGTTTAA

**Protein Sequence:** >RC402579 representing NM\_002020  
 Red=Cloning site Green=Tags(s)

```

MQRGAALCLRLWLCGLLDGLVSGYSMTPTLNITEESHVIDTGDSLISICRQHPLEWAWPGAQEAPAT
GDKDSEDTGVVRDCEGTDARPYCKVLLLEHVHANTGSYVCYKYIKARIEGTTAASSYVFVRDFEQPFI
NKPDTLLVNRKDAMWVPLVSIPLNVTLSQS SVLWPDGQEVVWDDRRGMLVSTPLLHDALYLQETT W
GDQDFLSNPFLVHITGNELYDIQLLPRKLELLVGEKLVNCTVWAEFNSGVTFDWDYPGKQAERGWVP
ERRSQQTHTESSILTIHNVSQHDLSYVCKANNGIQRFRESTEVIHNPFI SVEWLKGP ILEATAGDE
LVKLPVKLAAYPPPEFQWYKDGKALSGRHSPHALVLKEVTEASTGTYTLALWNSAAGLRRNISLELVNV
PPQIHEKEASSPSIYSRHSRQALTCTAYGVPLPLSIQWHWRPWPCKMFAQRSLRRRQQQLMPQCRDWR
AVTTQDAVNPIESLDTWTEFVEGKNKTVSKLVIQNAVNSAMYKCVSNKVGQDERLIYFYVTTIPDGFTI
ESKPSEELLEGGQPVLLSCQADSYKYEHLRWYRLNLSTLHDAHGNPLLLDCKNVHLFATPLAASLEEVAPG
ARHATLSLSIPRVAPEHEGHYVCEVQDRRSHDKHCHKKYL SVQALEAPRLTQNL TDLLVNVSDSLEMQCL
VAGAHAPSIWVYKDERLLEEKSGVDLADSNQKLSIQRVREEDAGRYLCSVCNAKGCVNSSASVAVEGSED
KGSMEIVILVGTGVI VFFWVLLLLIFCNMRRPAHADIKTG YLSIIMDPGEVPLEEQCEYL SYDASQWEF
PRERLHLGRVLGYSAFGKVVEASAFGIHKGSSCDTVAVKMLKEGATASEHRALMSELKILIHIGNHLNVV
NLLGACTKPQGPLMVIVEFCKYGNLSNFLRAKRDAFSPCAEKSPQRGRFRAMVELARLDRRRPGSSDRV
LFARFSKTEGGARRASPDQEAEDLWLSPLTMEDLVCYSFQVARGMEFLASRKC IHRDLAARNILLSESDV
VKICDFGLARDIYKDPDYVRKGSARLPLKWMAPESIFDKVYTTQSDVWSFGVLLWEIFSLGASPYGVQI
NEEFCQRLRDGTRMRAPELATPAIRRIMLNCWSDGPKARPAFSELVEILGDLLQGRGLQEEEEVCMAPRS
SQSSEEGSFQVSTMALHIAQADAEDSPPSLQRHSLAARYNWSVFPGLARGAETRGSRRMKTFFEFPM
TPTTYKGSVDNQTDSGMVLASEEFEQIESRHRQESGFR
  
```

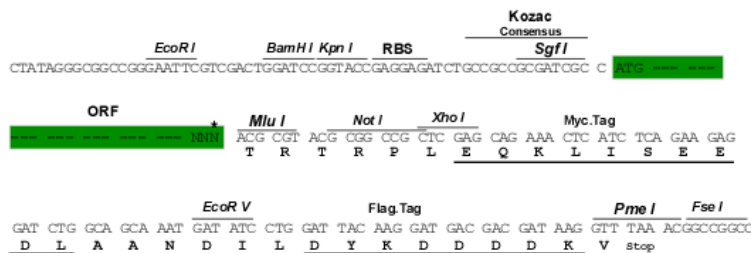
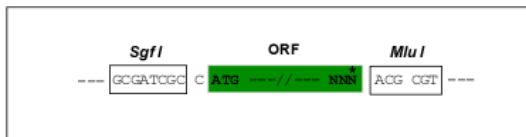
SGP TRRRLEQKLI SEEDLAANDILDYKDDDDKV

**Restriction Sites:**

Sgfl-MluI

**Cloning Scheme:**

Cloning sites used for ORF Shutting:



\* The last codon before the Stop codon of the ORF

**OTI Disclaimer:**

The molecular sequence of this clone aligns with the gene accession number as a point of reference only. However, individual transcript sequences of the same gene can differ through naturally occurring variations (e.g. polymorphisms), each with its own valid existence. This clone is substantially in agreement with the reference, but a complete review of all prevailing variants is recommended prior to use. [More info](#)

|                          |   |
|--------------------------|---|
| <b>OTI Annotation:</b>   | This clone was engineered to express the complete ORF with an expression tag. Expression varies depending on the nature of the gene.  |
| <b>Components:</b>       | The ORF clone is ion-exchange column purified and shipped in a 2D barcoded Matrix tube containing 10ug of transfection-ready, dried plasmid DNA (reconstitute with 100 ul of water).  |
| <b>RefSeq:</b>           | <u>NP_002011</u>  |
| <b>RefSeq Size:</b>      | 3894 bp   |
| <b>RefSeq ORF:</b>       | 3897 bp   |
| <b>Locus ID:</b>         | 2324  |
| <b>Cytogenetics:</b>     | 5q35.3  |
| <b>Domains:</b>          | pkinase, TyrKc, S_TKc, ig, IGc2, IG   |
| <b>Protein Families:</b> | Druggable Genome, Protein Kinase, Transmembrane   |
| <b>Protein Pathways:</b> | Cytokine-cytokine receptor interaction, Focal adhesion  |
| <b>MW:</b>               | 142.8 kDa   |
| <b>Gene Summary:</b>     | This gene encodes a tyrosine kinase receptor for vascular endothelial growth factors C and D. The protein is thought to be involved in lymphangiogenesis and maintenance of the lymphatic endothelium. Mutations in this gene cause hereditary lymphedema type IA. [provided by RefSeq, Jul 2008] |