

Product datasheet for **RC402543**

BCL2 (NM_000657) Human Mutant ORF Clone

Product data:

Product Type:	Mutant ORF Clones
Product Name:	BCL2 (NM_000657) Human Mutant ORF Clone
Mutation Description:	A43T
Affected Codon#:	43
Affected NT#:	127
Nucleotide Mutation:	BCL2 Mutant (A43T), Myc-DDK-tagged ORF clone of Homo sapiens B-cell CLL/lymphoma 2 (BCL2), nuclear gene encoding mitochondrial protein, transcript variant beta as transfection-ready DNA
Effect:	Autoimmune disease, resistance to apoptosis
Symbol:	BCL2
Synonyms:	Bcl-2; PPP1R50
E. coli Selection:	Kanamycin (25 ug/mL)
Mammalian Cell Selection:	Neomycin
Vector:	pCMV6-Entry (PS100001)
Tag:	Myc-DDK
ACCN:	NM_000657
ORF Size:	615 bp
Restriction Sites:	SgfI-MluI



[View online »](#)

ORF Nucleotide Sequence:

>RC402543 representing NM_000657
 Red=Cloning site Blue=ORF Green=Tags(s)

TTTTGTAATACGACTCACTATAGGGCGGCCGGAATTCGTCGACTGGATCCGGTACCGAGGAGATCTGCC
 GCC**CGGATCGCC**

ATGGCGCACGCTGGGAGAACAGGGTACGATAACCGGGAGATAGTGATGAAGTACATCCATTATAAGCTGT
 CGCAGAGGGGCTACGAGTGGGATGCGGGAGATGTGGGCCTCCGCCCGGGGGCCACCCCGCACCGGG
 CATCTTCTCCTCCAGCCGGGCACACGCCCATCCAGCCGCATCCCGGACCCGGTCCGACAGGACCTCG
 CCGCTGCAGACCCCGGCTGCCCGCGCCGCCCGCGGGGCTGCGCTCAGCCCGGTGCCACCTGTGGTCC
 ACCTGACCCTCCGCCAGGCCGGCAGCAGCTTCTCCCGCCGCTACCGCCGCAGCTTCGCCGAGATGCCAG
 CCAGCTGCACCTGACGCCCTTACCAGCGCGGGGACGCTTTGCCACGGTGGTGGAGGAGCTTTCAGGGAC
 GGGGTGAAGTGGGGAGGATTGTGCCCTCTTTGAGTTCGGTGGGGTTCATGTGTGTGGAGAGCGTCAACC
 GGGAGATGTCGCCCTGGTGGACAACATCGCCCTGTGGATGACTGAGTACCTGAACCGGCACCTGCACAC
 CTGGATCCAGGATAACGGAGGCTGGGTAGGTGCACTTGGTGTGTGAGTCTGGGC

AG**CGGACCG**ACGCGTACGCGGCCGCTCGAGCAGAACTCATCTCAGAAGAGGATCTGGCAGCAAATGATATCC
 TGGATTACAAGGATGACGACGA TAAGGTTTAA

Protein Sequence:

>RC402543 representing NM_000657
 Red=Cloning site Green=Tags(s)

MAHAGRTGYDNREIVMKYIHYKLSQRGYEWDAGDVGAAPPGATPAPGIFSSQPGHTPHPAASRDPVARTS
 PLQTPAAPGAAAGPALSPVPPVHLLRQAGDDFRRYRRDFAEMSSQLHLTPFTARGRFATVVEELFRD
 GVNWGRIVAFFEFGVMCVESVNREMSPLVDNIALWMTEYLNRLHTWIQDNGGWVWALGDVSLG

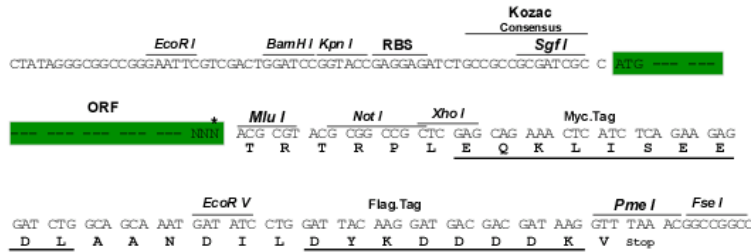
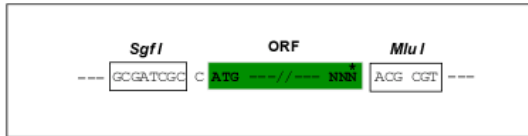
SGPTRRRRLEQKLI SEEDLAANDILDYKDDDDKV

Restriction Sites:

SgfI-MluI

Cloning Scheme:

Cloning sites used for ORF Shutting:



* The last codon before the Stop codon of the ORF

OTI Disclaimer:	<p>Due to the inherent nature of this plasmid, standard methods to replicate additional amounts of DNA in E. coli are highly likely to result in mutations and/or rearrangements. Therefore, OriGene does not guarantee the capability to replicate this plasmid DNA. Additional amounts of DNA can be purchased from OriGene with batch-specific, full-sequence verification at a reduced cost. Please contact our customer care team at custsupport@origene.com or by calling 301.340.3188 option 3 for pricing and delivery.</p> <p>The molecular sequence of this clone aligns with the gene accession number as a point of reference only. However, individual transcript sequences of the same gene can differ through naturally occurring variations (e.g. polymorphisms), each with its own valid existence. This clone is substantially in agreement with the reference, but a complete review of all prevailing variants is recommended prior to use. More info</p>
OTI Annotation:	<p>This clone was engineered to express the complete ORF with an expression tag. Expression varies depending on the nature of the gene.</p>
Components:	<p>The ORF clone is ion-exchange column purified and shipped in a 2D barcoded Matrix tube containing 10ug of transfection-ready, dried plasmid DNA (reconstitute with 100 ul of water).</p>
RefSeq:	<p>NP_000648</p>
RefSeq Size:	<p>615 bp</p>
RefSeq ORF:	<p>618 bp</p>
Locus ID:	<p>596</p>
Cytogenetics:	<p>18q21.33</p>
Protein Families:	<p>Druggable Genome, ES Cell Differentiation/IPS, Stem cell - Pluripotency, Transmembrane</p>
Protein Pathways:	<p>Amyotrophic lateral sclerosis (ALS), Apoptosis, Colorectal cancer, Focal adhesion, Neurotrophin signaling pathway, Pathways in cancer, Prostate cancer, Small cell lung cancer</p>
MW:	<p>22.6 kDa</p>
Gene Summary:	<p>This gene encodes an integral outer mitochondrial membrane protein that blocks the apoptotic death of some cells such as lymphocytes. Constitutive expression of BCL2, such as in the case of translocation of BCL2 to Ig heavy chain locus, is thought to be the cause of follicular lymphoma. Alternative splicing results in multiple transcript variants. [provided by RefSeq, Feb 2016]</p>