

Product datasheet for **RC402460**

Tuberin (TSC2) (NM_000548) Human Mutant ORF Clone

Product data:

Product Type:	Mutant ORF Clones
Product Name:	Tuberin (TSC2) (NM_000548) Human Mutant ORF Clone
Mutation Description:	W1430X
Affected Codon#:	1430
Affected NT#:	4289
Nucleotide Mutation:	TSC2 Mutant (W1430X), Myc-DDK-tagged ORF clone of Homo sapiens tuberous sclerosis 2 (TSC2), transcript variant 1 as transfection-ready DNA
Effect:	Tuberous sclerosis
Symbol:	TSC2
Synonyms:	LAM; PPP1R160; TSC4
E. coli Selection:	Kanamycin (25 ug/mL)
Mammalian Cell Selection:	Neomycin
Vector:	pCMV6-Entry (PS100001)
Tag:	Myc-DDK
ACCN:	NM_000548
ORF Size:	4287 bp
Restriction Sites:	SgfI-XhoI
ORF Nucleotide Sequence:	>RC402460 representing NM_000548 Red=Cloning site Blue=ORF Green=Tags(s)

TTTTGTAATACGACTCACTATAGGGCGCCGGGAATTCGTCGACTGGATCCGGTACCGAGGAGATCTGCC
GCC**CGATCGCC**

ATGGCCAAACCAACAAGCAAAGATTCAGGCTTGAAGGAGAAGTTTAAGATTCTGTTGGGACTGGGAACAC
CGAGGCCAAATCCCAGGTCTGCAGAGGGTAAACAGACGGAGTTTATCATCACCGCGAAATACTGAGAGA
ACTGAGCATGGAATGTGGCCTCAACAATCGCATCCGGATGATAGGGCAGATTTGTGAAGTCGAAAAACC
AAGAAATTTGAAGAGCACGCAGTGAAGCACTCTGGAAGGCGGTCGCGGATCTGTTGCAGCCGGAGCGGC
CGCTGGAGGCCCGGCACGCGGTCTGGCTCTGCTGAAGCCATCGTGCAGGGGCAGGGCGAGCGTTTGGG
GGTCTCAGAGCCCTCTCTTTAAGGTCAAGGATTACCCTTCCAACGAAGACCTTCACGAAAGGCTG
GAGTTTTCAAGGCCCTCACAGACAATGGGAGACACATCACCTACTTGGAGGAAGAGCTGGCTGACTTTG



[View online »](#)

TCCTGCAGTGGATGGATGTTGGCTTGTCTCGGAATTCCTTCTGGTGCTGGTGAACCTGGTCAAATTCAA
 TAGCTGTTACCTCGACGAGTACATCGCAAGGATGGTTCAGATGATCTGTCTGCTGTGCGTCCGGACCGCG
 TCCTCTGTGGACATAGAGGTCTCCCTGCAGGTGCTGGACGCCGTGGTCTGCTACAACCTGCCTGCCGGCTG
 AGAGCCTCCCGCTGTTTCATCGTTACCCTCTGTGCGACCATCAACGTCAAGGAGCTCTGCGAGCCTTGCTG
 GAAGCTGATGCGGAACCTCCTTGGCACCCACCTGGGCCACAGCGCCATCTACAACATGTGCCACCTCATG
 GAGGACAGACCTACATGGAGGACGCGCCCTGCTGAGAGGAGCCGTGTTTTTGTGGCGATGGCTCTCT
 GGGGAGCCACCAGGCTATTCTCTCAGGAATCGCCGACATCTGTGTTGCCATATTTTACCAGGCCAT
 GGCAATGTCGGAACGAGGTGGTGTCTATGAGATCGTCCGTCCATCACCAGGCTCATCAAGAAAGTATAGG
 AAGGAGCTCCAGGTGGTGGCGTGGGACATTCTGCTGAACATCATCGAACGGCTCCTTCCAGAGCTCCAGA
 CCTTGGACAGCCCGGAGCTCAGGACCATCGTCCATGACCTGTTGACCACGGTGGAGGAGCTGTGTGACCA
 GAACGAGTTCACGGGTCTCAGGAGAGATACTTGAACCTGGTGGAGAGATGTGCGGACCAGAGGCCTGAG
 TCCTCCCTCTGAACCTGATCTCTATAGAGCGCAGTCCATCCACCCGGCCAAGGACGGCTGGATTGAGA
 ACCTGCAGGCGCTGATGGAGAGATTCTCAGGAGCGAGTCCCGAGGCGCCGTGCGCATCAAGGTGCTGGA
 CGTGTCTCCTTTGTGCTGCTCATCAACAGGCAGTTCTATGAGGAGGAGCTGATTAACCTAGTGGTTCATC
 TCGCAGCTCTCCACATCCCGAGGATAAAGACCACCAGTCCGAAAGCTGGCCACCCAGTTGCTGGTGG
 ACCTGGCAGAGGGCTGCCACACACACCCTTCAACAGCCTGCTGGACATCATCGAGAAGGTGATGGCCCC
 CTCCCTCTCCCCACCCCGGAGCTGGAAGAAAGGGATGTGGCCGCATACTCGGCCCTCCTTGGAGGATGTG
 AAGACAGCCGTCTGGGGCTTCTGGTCACTTCCAGACCAAGCTGTACACCCTGCCTGCAAGCCACGCCA
 CGCGTGTGATGAGATGCTGGTCCAGCCACATTCAGTCCACTACAAGCACAGCTACACCCTGCCAATCGC
 GAGCAGCATCCGGCTGCAGGCCCTTGTACTTCTGTTGCTGCTGCGGGCCGACTCACTGCACCCGCTGGGC
 CTGCCAACAAAGGATGGAGTGTGCGGTTCCAGCCCTACTGCGTCTGCGACTACATGGAGCCAGAGAGAG
 GCTCTGAGAAGAAGACCAGCGGCCCTTCTCCTCCACAGGGCCTCCTGGCCCGGCGCTGACAGGCC
 CGCCGCTGCGGCTGGGGTCCGTGCCCTACTCCCTGCTCTCCGCTCCTGCTGCAGTGTGAAGCAGGAG
 TCTGACTGGAAGGTGCTGAAGCTGGTTCTGGGCAGGCTGCCTGAGTCCCTGCGCTATAAAGTGTCTACT
 TTACTTCCCCTTGCAGTGTGGACCAGCTGTGCTGCTCTGCTCCATGCTTTTCCAGGCCAAAGACACT
 GGAGCGGCTCCGAGGCGCCCAAGGCTTCTCCAGAAGTACTGACCTGGCCGTGGTTCAGTGTG
 ACAGCATTAACTCTTACCATAACTACCTGGACAAAACCAACAGCGGAGATGGTCTACTGCCTGGAGC
 AGGGCCTCATCCACCGCTGTGCCAGCCAGTGCCTGCTGGCCTTGTCCATCTGCAGCGTGGAGATGCCTGA
 CATCATCATCAAGGCGCTGCCTGTTCTGGTGGTGAAGCTCACGCACATCTCAGCCACAGCCAGCATGGCC
 GTCCACTGCTGGAGTTCCTGTCCACTCTGCCAGGCTGCCGCACCTCTACAGGAACTTTGCCCGGAGC
 AGTATGCCAGTGTGTTGCCATCTCCCTGCCGTACACCAACCCCTCAAGTTTAAATCAGTACATCGTGTG
 TCTGGCCATCAGCTCATAGCCATGTGGTTTCATCAGGTGCCGCTGCCCTTCCGGAAGGATTTTGTCCCT
 TTCATCTACTAAGGGCCTGCGGTCCAATGTCTCTTGTCTTTTGTGATGACACCCCGAGAAGGACAGCTTCA
 GGGCCCGGAGTACTAGTCTCAACGAGAGACCAAGAGTCTGAGGATAGCCAGACCCCCCAACAAGGCTT
 GAATAACTCTCCACCCGTGAAAGAAATCAAGGAGAGCTCTGCAGCCGAGGCCCTCCGGTGGCCGAGCATC
 AGTGTGTCTGAACATGTGGTCCGAGCAGGATACAGACGTCCCTCACCAGTGGCAGCTTGGGGTCTGCAG
 ATGAGAAGTCCGTGGCCAGGCTGACGATAGCCTGAAAAACCTCCACCTGGAGCTCACGGAAACCTGTCT
 GGACATGATGGCTCGATACGTCTTCTCAACTTACGGCTGTCCGGAAGAGTCTCCTGTGGGCGAGTTC
 CTCTAGCGGGTGGCAGGACAAAACCTGGCTGGTTGGGAACAAGCTTGTACTGTGACGACAAGCGTGG
 GAACCGGGACCCGGTCTTACTAGGCCCTGGACTCGGGGGAGCTGCAGTCCGGCCCGGAGTCCAGCTCCAG
 CCCCAGGGTGCATGTGAGACAGACCAAGGAGGCCCGGCAAGCTGGAGTCCCAGGCTGGGCAGCAGGTG
 TCCCGTGGGGCCCGGATCGGGTCCGTTCCATGTCCGGGGGCCATGGTCTTCCAGTTGGCGCCCTGGACG
 TGCCGGCTCCCAGTTCTGGGCAGTGCCTTCTCCAGGACCACGGACTGCACCAGCCGCAAACTGGA
 GAAGGCCTCAGCTGGCACCCGGTCTCTGTGCAGGAGAAGACGAACCTGGCGGCCTATGTCCCCCTGCTG
 ACCCAGGGCTGGGCGGAGATCCTGGTCCGGAGGCCACAGGGAACACCAGCTGGTGTGAGCCTGGAGA
 ACCCGCTCAGCCCTTCTCCTCGGACATCAACAACATGCCCTGCAGGAGCTGTCTAACCCCTCATGGC
 GGCTGAGCGCTTCAAGGAGCACCGGGACACAGCCCTGTACAAGTCACTGTGGTCCGGCAGCCAGCAGC
 GCCAAACCCCTCCTCTGCCTCGCTCCAACACAGTGGCTCTTCTCCTCCCTGTACCAGTCCAGCTGCC
 AAGGACAGCTGCACAGGAGCGTTTCTGGGCAGACTCCGCCGTGGTTCATGGAGGAGGGAAGTCCGGGCGA
 GGTTCTGTGCTGGTGGAGCCCCAGGGTTGGAGGACGTTGAGGCAGCGCTAGGCATGGACAGGCGCAGC
 GATGCCTACAGCAGGTGCTCCTCAGTCTCCAGCCAGGAGGAGAAGTGCCTCCACGCGGAGGAGCTGGTTG
 GCAGGGGCATCCCATCGAGCGAGTGTCTCCTCGAGGGTGGCCGGCCCTCTGTGGACCTCTCCTTCCA

GCCCTCGAGCCCTGAGCAAGTCCAGCTCCTCTCCCGAGCTGCAGACTCTGCAGGACATCCTCGGGGAC
 CCTGGGACAAGGCCGACGTGGGCCGGCTGAGCCCTGAGGTTAAGGCCGGTACAGTCAGGGACCTGG
 ACGGGAAAGTGTGCC

AGCGGACCGACGCGTACGCGGCCGCTCGAGCAGAAACTCATCTCAGAAGAGGATCTGGCAGCAAATGATATCC
 TGGATTACAAGGATGACGACGA TAAGGTTTAA

Protein Sequence:

>RC402460 representing NM_000548
 Red=Cloning site Green=Tags(s)

MAKPTSKDGLKEKFKILLGLGTPRPNRPAEKGQTEFIITAEILRELSMECGLNRRMIGQICEVAKT
 KKFEHHAVEALWKAVADLLQPERPEARHAVLALLKAIYVQGGERLGLRALFFKVIKDYPNEDLHERL
 EVFKALTDNGRHITYLEELADFVLRQWMDVGLSSEFLLVNLVKFNCSYLDEYIARMVQMICLLCVRTA
 SSVYIEVSLQVLDVAVVCYNCLPAESLPLFIVTLCRTINVKELCEPCWKLNRNLLGTHLGHSAIYNMCHLM
 EDRAVMEDAPLLRGAVFFVGMALWGAHRLYSLRNSPTSVLPSFYQAMACPNEVVSYEIVLSITRLLIKKYR
 KELQVVAWDILLNIIERLLQQLQTLDSPELRTIVHDLTTVEELCDQNEFHGSQERYFELVERCADQRPE
 SLLNLSYRAQSIHPAKDGWIQNLQALMERFFRSESRGAVRIKVLVDVLSFVLLINRQFYEEELINSVVI
 SQLSHIPEDKDHQVRKLATQLLDLAEGCHTHHFNSLLDIEKVMARSLSPPELEERDVAAYSASLEDV
 KTAVLGLLVILQTKLYLPASHATRVYEMLVSHIQLHYKHSYTLPIASSIRLQAFDFLLLRADSLHRLG
 LPNKDGVVRFSPYCVCDYMEPERGSEKKTSGPLSPPTGPPGAPAGPAVRLGSPYSLLFRVLLQCLKQE
 SDWKVLKLVLRPELRYKVLIFTSPCSVDQLCSALCSMLSGPKTLERLRGAPEGFRTDLHLAVVPVL
 TALISYHNYLDKTKQREMYCLEQGLIHRCASQCVALSICSVEMPDIIKALPVLVVKLTHISATASMA
 VPLLEFLSTLARLPHLYRNFAAEQYASVFAISLPYTNPSKFNQYIVCLAHHVIAAMWFIRCLPFRKDFVP
 FITKGLRSNVLVSFDDTPEKDSFRARSTSLNERPKSLRIARPPKQGLNNSPPVKEFKESSAAEFRCRSI
 SVSEHVRSRIQTSLSASLGSADENSAQADDSLKNLHLELTETCLDMMARYVFSNFTAVPKRSPVGEF
 LLAGGRTKTWLVGNKLVTVTTSVGTGTRSLGLDSGELQSGPESSSPGVHVRQTKEAPAKLESQAGQV
 SRGARDVRVSMGGHGLRVGALDVPASQFLGSATSPPGRTAPAAKPEKASAGTRVPVQEKTNLAAYVPLL
 TQGWAEILVRRPTGNTSWLMSLENPLSPFSSDINNMPQLQELSNALMAAERFKEHRDTALYKLSVPAAST
 AKPPPLPRSNVASFSSLYQSSCQQLHRSVSWADSAVMEEGSPGEVPLVEPPGLEDEAALGMDRRT
 DAYSRSSSVSSQEEKSLHAEELVGRGIPIERVVSSEGGRRPSVDLSFQPSQPLSKSSSSPELQTLQDILGD
 PGDKADVGRLSPEVKARSQSGTLDGESAA

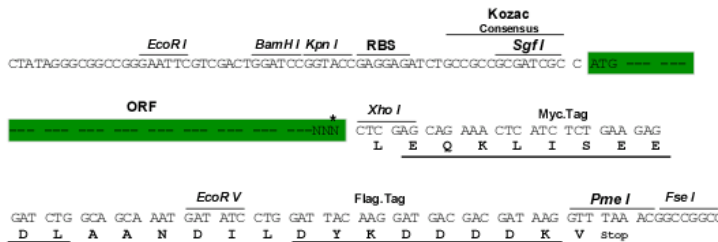
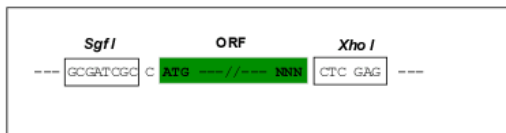
SGPTRRRL**EQKLI**SEEDLAANDILDYKDDDDK**V**

Restriction Sites:

SgfI-XhoI

Cloning Scheme:

Cloning sites used for ORF Shuttling:



* The last codon before the Stop codon of the ORF

OTI Disclaimer:	The molecular sequence of this clone aligns with the gene accession number as a point of reference only. However, individual transcript sequences of the same gene can differ through naturally occurring variations (e.g. polymorphisms), each with its own valid existence. This clone is substantially in agreement with the reference, but a complete review of all prevailing variants is recommended prior to use. More info
OTI Annotation:	This clone was engineered to express the complete ORF with an expression tag. Expression varies depending on the nature of the gene.
Components:	The ORF clone is ion-exchange column purified and shipped in a 2D barcoded Matrix tube containing 10ug of transfection-ready, dried plasmid DNA (reconstitute with 100 ul of water).
RefSeq:	NP_000539
RefSeq Size:	4287 bp
RefSeq ORF:	5424 bp
Locus ID:	7249
Cytogenetics:	16p13.3
Domains:	Rap_GAP, Tuberin
Protein Families:	Druggable Genome
Protein Pathways:	Insulin signaling pathway, mTOR signaling pathway, p53 signaling pathway
MW:	157.2 kDa
Gene Summary:	Mutations in this gene lead to tuberous sclerosis complex. Its gene product is believed to be a tumor suppressor and is able to stimulate specific GTPases. The protein associates with hamartin in a cytosolic complex, possibly acting as a chaperone for hamartin. Alternative splicing results in multiple transcript variants encoding different isoforms. [provided by RefSeq, Jul 2008]