

Product datasheet for **RC402459**

Tuberin (TSC2) (NM_000548) Human Mutant ORF Clone

Product data:

Product Type:	Mutant ORF Clones
Product Name:	Tuberin (TSC2) (NM_000548) Human Mutant ORF Clone
Mutation Description:	W1430X
Affected Codon#:	1430
Affected NT#:	4290
Nucleotide Mutation:	TSC2 Mutant (W1430X), Myc-DDK-tagged ORF clone of Homo sapiens tuberous sclerosis 2 (TSC2), transcript variant 1 as transfection-ready DNA
Effect:	Tuberous sclerosis
Symbol:	Tuberin
Synonyms:	LAM; PPP1R160; TSC4
E. coli Selection:	Kanamycin (25 ug/mL)
Mammalian Cell Selection:	Neomycin
Vector:	pCMV6-Entry (PS100001)
Tag:	Myc-DDK
ACCN:	NM_000548
ORF Size:	4287 bp
Restriction Sites:	SgfI-XhoI
ORF Nucleotide Sequence:	>RC402459 representing NM_000548 Red=Cloning site Blue=ORF Green=Tags(s)

TTTTGTAATACGACTCACTATAGGGCGGCCGGGAATTCGTCGACTGGATCCGGTACCGAGGAGATCTGCC
GCC**CGATCGCC**

ATGGCCAAACCAACAAGCAAAGATTCAGGCTTGAAGGAGAAGTTTAAGATTCTGTTGGGACTGGGAACAC
CGAGGCCAAATCCCAGGTCTGCAGAGGGTAAACAGACGGAGTTTATCATCACCGCGGAAATACTGAGAGA
ACTGAGCATGGAATGTGGCCTCAACAATCGCATCCGGATGATAGGGCAGATTTGTGAAGTCGAAAAACC
AAGAAATTTGAAGAGCACGCAGTGAAGCACTCTGGAAGGCGGTCGCGGATCTGTTGCAGCCGGAGCGGC
CGCTGGAGGCCCGCACGCGGTCTGGCTCTGCTGAAGCCATCGTGCAGGGGCAGGGCGAGCGTTTGGG
GGTCTCAGAGCCCTCTCTTTAAGGTCAAGGATTACCCTTCCAACGAAGACCTTCACGAAAGGCTG
GAGTTTTCAAGGCCCTCACAGACAATGGGAGACACATCACCTACTTGGAGGAAGAGCTGGCTGACTTTG



[View online »](#)

TCCTGCAGTGGATGGATGTTGGCTTGTCTCGGAATTCCTTCTGGTGCTGGTGAACCTGGTCAAATTCAA
 TAGCTGTTACCTCGACGAGTACATCGCAAGGATGGTTCAGATGATCTGTCTGCTGTGCGTCCGGACCGCG
 TCCTCTGTGGACATAGAGGTCTCCCTGCAGGTGCTGGACGCCGTGGTCTGCTACAACCTGCCTGCCGGCTG
 AGAGCCTCCCGCTGTTTCATCGTTACCCTCTGTGCGACCATCAACGTCAAGGAGCTCTGCGAGCCTTGCTG
 GAAGCTGATGCGGAACCTCCTTGGCACCACCTGGGCCACAGCGCCATCTACAACATGTGCCACCTCATG
 GAGGACAGACCTACATGGAGGACGCGCCCTGCTGAGAGGAGCCGTGTTTTTTGGGCGATGGCTCTCT
 GGGGAGCCACCGGCTATTCTCTCAGGAATCGCCGACATCTGTGTTGCCATATTTTACCAGGCCAT
 GGCAATGTCGAAACGAGGTGGTGTCTATGAGATCGTCCGTCCATCACCAGGCTCATCAAGAAAGTATAGG
 AAGGAGCTCCAGGTGGTGGCGTGGGACATTCTGCTGAACATCATCGAACGGCTCCTTACAGAGCTCCAGA
 CCTTGGACAGCCCGGAGCTCAGGACCATCGTCCATGACCTGTTGACCACGGTGGAGGAGCTGTGTGACCA
 GAACGAGTTCACGGGTCTCAGGAGAGATACTTGAACGGTGGAGAGATGTGCGGACCAGAGGCCTGAG
 TCCTCCCTCTGAACCTGATCTCTATAGAGCGCAGTCCATCCACCCGGCCAAGGACGGCTGGATTGAGA
 ACCTGCAGGCGCTGATGGAGAGATTCTCAGGAGCGAGTCCCGAGGCGCCGTGCGCATCAAGGTGCTGGA
 CGTGTCTCCTTTGTGCTGCTCATCAACAGGCAGTTCTATGAGGAGGAGCTGATTAACCTAGTGGTCATC
 TCGCAGCTCTCCACATCCCGAGGATAAAGACCACCAGTCCGAAAGCTGGCCACCCAGTTGCTGGTGG
 ACCTGGCAGAGGGCTGCCACACACACCACTTCAACAGCCTGCTGGACATCATCGAGAAGGTGATGGCCCC
 CTCCCTCTCCCCACCCCGGAGCTGGAAGAAAGGGATGTGGCCGCATACTCGGCCCTCCTTGGAGGATGTG
 AAGACAGCCGTCTGGGGCTTCTGGTCACTTTCAGACCAAGCTGTACACCTGCCTGCAAGCCACGCCA
 CGCGTGTGATGAGATGCTGGTCCAGCCACATTCAGTCCACTACAAGCACAGCTACACCTGCCAATCGC
 GAGCAGCATCCGGCTGCAGGCCCTTGTACTTCTGTTGCTGCTGCGGGCCGACTCACTGCACCCGCTGGGC
 CTGCCAAACAAGGATGGAGTGTGCGGTTCCAGCCCTACTGCGTCTGCGACTACATGGAGCCAGAGAGAG
 GCTCTGAGAAGAAGACCAGCGGCCCTTCTCCTCCACAGGGCCTCCTGGCCCGCGCCTGCAGGCC
 CGCCGCTGCGGCTGGGGTCCGTGCCCTACTCCCTGCTCTCCCGCTCCTGCTGCAGTGTGAAGCAGGAG
 TCTGACTGGAAGGTGCTGAAGCTGGTTCGGGAGGCTGCCTGAGTCCCTGCGCTATAAAGTGTCTACT
 TTACTTCCCCTTGCAGTGTGGACCAGCTGTGCTGCTCTGCTCCATGCTTTTACAGGCCAAAGACACT
 GGAGCGGCTCCGAGGCGCCCAAGGCTTCTCCAGAAGTACTGACCTGGCCGTGGTTCAGTGTG
 ACAGCATAATCTCTTACCATAACTACCTGGACAAAACCAACAGCGGAGATGGTCTACTGCCTGGAGC
 AGGGCCTCATCCACCGCTGTGCCAGCCAGTGCCTGCTGGCCTTGTCCATCTGCAGCGTGGAGATGCCTGA
 CATCATCATCAAGGCGCTGCCTGTTCTGGTGGTGAAGCTCACGCACATCTCAGCCACAGCCAGCATGGCC
 GTCCACTGCTGGAGTTCCTGTCCACTCTGCCAGGCTGCCGCACCTCTACAGGAACTTTGCCCGGAGC
 AGTATGCCAGTGTGTTGCCATCTCCCTGCCGTACACCAACCCCTCAAGTTTAAATCAGTACATCGTGTG
 TCTGGCCATCAGCTCATAGCCATGTGGTTCATCAGGTGCCGCTGCCCTTCCGGAAGGATTTTGTCCCT
 TTCATCTAAGGGCCTGCGGTCCAATGTCTCTTGTCTTTTGTGATGACACCCCGAGAAGGACAGCTTCA
 GGGCCCGGAGTACTAGTCTAACGAGAGACCAAGAGTCTGAGGATAGCCAGACCCCAACAAGGCTT
 GAATAACTCTCCACCCGTGAAAGAAATCAAGGAGAGCTCTGCAGCCGAGGCCCTCCGGTCCCGCAGCATC
 AGTGTGTCTGAACATGTGGTCCGAGCAGGATACAGACGTCCCTCACCAGTGCCAGCTTGGGGTCTGCAG
 ATGAGAAGTCCGTGGCCAGGCTGACGATAGCCTGAAAAACCTCCACCTGGAGCTCACGGAAACCTGTCT
 GGACATGATGGCTCGATACGTCTTCTCAACTTACGGCTGTCCGGAAGAGTCTCCTGTGGGCGAGTTC
 CTCTAGCGGGTGGCAGGACAAAACCTGGCTGGTGGGAACAAGCTTGTACTGTGACGACAAGCGTGG
 GAACCGGACCCGGTCTTACTAGGCCCTGGACTCGGGGAGCTGCAGTCCGGCCCGGAGTCCAGCTCCAG
 CCCCAGGGTGCATGTGAGACAGACCAAGGAGGCCCGGCAAGCTGGAGTCCAGGCTGGGCAGCAGGTG
 TCCCGTGGGGCCCGGATCGGGTCCGTTCATGTGCGGGGGCCATGGTCTTCGAGTTGGCGCCCTGGACG
 TGCCGGCTCCAGTTCTGGGCAGTGCCTTCTCCAGGACCAGGACTGCACCAGCCGCAAACTGA
 GAAGGCCTCAGCTGCCACCCGGTTCCTGTGACAGGAGAAGACGAACCTGGCGGCCTATGTCCCCCTGCTG
 ACCCAGGGCTGGGCGGAGATCCTGGTCCGGAGGCCACAGGGAACACCAGCTGGTGTGAGCCTGGAGA
 ACCCGCTCAGCCCTTCTCCTCGACATCAACAACATGCCCTGCAGGAGCTGTCTAACCCCTCATGGC
 GGCTGAGCGCTTCAAGGAGCACCAGGACACAGCCCTGTACAAGTCACTGTGGTCCGGCAGCCAGCAGC
 GCCAAACCCCTCCTCTGCCTCGCTCCAACACAGTGGCTCTTCTCCTCCTGTACCAGTCCAGCTGCC
 AAGGACAGCTGCACAGGAGCTTCTTCTGGGCAGACTCCGCCGTGGTTCATGGAGGAGGGAAGTCCGGGCGA
 GGTTCTGTGCTGGTGGAGCCCCAGGGTTGGAGGACGTTGAGGCAGCGCTAGGCATGGACAGGCGCAGC
 GATGCCTACAGCAGGTGCTCCTCAGTCTCCAGCCAGGAGGAGAAGTGCCTCCACGCGGAGGAGCTGGTTG
 GCAGGGGCATCCCATCGAGCGAGTGTCTCCTCGAGGGTGGCCGGCCCTGTGGACCTCTCCTTCCA

GCCCTCGAGCCCTGAGCAAGTCCAGCTCCTCTCCCGAGCTGCAGACTCTGCAGGACATCCTCGGGGAC
 CCTGGGACAAGGCCGACGTGGGCCGGCTGAGCCCTGAGGTTAAGGCCGGTACAGTCAGGGACCTGG
 ACGGGAAAGTGTGCC

AGCGGACCGACGCGTACGCGGCCGCTCGAGCAGAAACTCATCTCAGAAGAGGATCTGGCAGCAAATGATATCC
 TGGATTACAAGGATGACGACGA TAAGGTTTAA

Protein Sequence:

>RC402459 representing NM_000548
 Red=Cloning site Green=Tags(s)

MAKPTSKDSSLKEKFKILLGLGTPRPNRPAEKGQTEFIITAEILRELSMECGLNRRMIRMIQICEVAKT
 KKFEHVEALWKAVADLLQPERPEARHAVLALLKAIYVQGGERLGLRALFFKVIKDYPSNEDLHERL
 EVFKALTDNGRHITYLEELADFVLQWMDVGLSSEFLLVLVNLVKFNCSYLDEYIARMVQMICLLCVRTA
 SSVYIEVSLQVLDAVVCYNCLPAESLPLFIVTLCRTINVKELCEPCWKLNRLLGTHLGHSAIYNMCHLM
 EDRAVMEDAPLLRGAVFFVGMALWGAHRLYSLRNSPTSVLPSFYQAMACPNEVVSYEIVLSITRLIKKYR
 KELQVVAWDILLNIIERLLQQLQTLDSPELRTIVHDLTTVEELCDQNEFHGSQERYFELVERCADQRPE
 SSSLNLSYRAQSIHPAKDGWIQNLQALMERFFRSESRGAVRIKVLVDVLSFVLLINRQFYEEELINSVVI
 SQLSHIPEDKDHQVRKLATQLLVDLAEGCHTHHFNSLLDIEKVMARSLSPPELEERDVAAYSASLEDV
 KTAVLGLLVILQTKLYLPASHATRVYEMLVSHIQLHYKHSYTLPIASSIRLQAFDFLLLRADSLHRLG
 LPNKDGVVRFSPYCVCDYMEPERGSEKKTSGPLSPPTGPPGAPAGPAVRLGSPYSLLFRVLLQCLKQE
 SDWKVLKLVLRPELRYKVLIFTSPCSVDQLCSALCSMLSGPKTLERLRGAPEGFRTDLHLAVVPVL
 TALISYHNYLDKTKQREMYCLEQGLIHRCASQCVALSICSVEMPDIIKALPVLVVKLTHISATASMA
 VPLLEFLSTLARLPHLYRNFAAEQYASVFAISLPYTNPSKFNQYIVCLAHHVIAMWFIRCLPFRKDFVP
 FITKGLRSNVLLSFDTPPEKDSFRARSTSLNERPKSLRIARPPKQGLNNSPPVKEFKESSAAEAFRCRSI
 SVSEHVRSRIQTSLSASLGSADENSAQADDSLKNLHLELTETCLDMMARYVFSNFTAVPKRSPVGEF
 LLAGGRTKTWLVGNKLVTVTTSVGTGTRSLGLDSGELQSGPESSSPGVHVRQTKEAPAKLESQAGQV
 SRGARDVRVSMGGHGLRVGALDVPASQFLGSATSPPGRTAPAAKPEKASAGTRVPVQEKTNLAAYVPLL
 TQGWAEILVRRPTGNTSWLMSLENPLSPFSSDINMPLQELSNALMAAERFKEHRDTALYKLSVPAAST
 AKPPPLPRSNVASFSSLYQSSCQQLHRSVSWADSAVMEEGSPGEVPLVEPPGLEDVEAALGMDRRT
 DAYSRSSSVSSQEEKSLHAEELVGRGIPIERVVSSEGGRRPSVDLSFQPSQPLSKSSSSPELQTLQDILGD
 PGDKADVGRLSPEVKARSQSGTLDGESAA

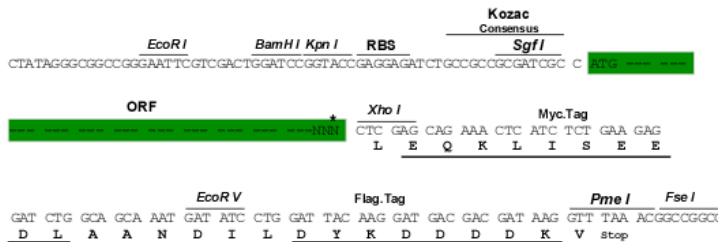
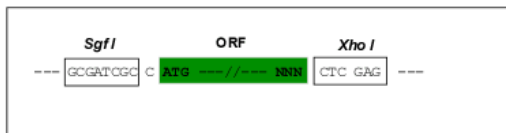
SGPTRRRL**EQKLI**SEEDLAANDILDYKDDDDK**V**

Restriction Sites:

SgfI-XhoI

Cloning Scheme:

Cloning sites used for ORF Shuttling:



* The last codon before the Stop codon of the ORF

OTI Disclaimer:	The molecular sequence of this clone aligns with the gene accession number as a point of reference only. However, individual transcript sequences of the same gene can differ through naturally occurring variations (e.g. polymorphisms), each with its own valid existence. This clone is substantially in agreement with the reference, but a complete review of all prevailing variants is recommended prior to use. More info
OTI Annotation:	This clone was engineered to express the complete ORF with an expression tag. Expression varies depending on the nature of the gene.
Components:	The ORF clone is ion-exchange column purified and shipped in a 2D barcoded Matrix tube containing 10ug of transfection-ready, dried plasmid DNA (reconstitute with 100 ul of water).
Note:	Plasmids are not sterile. For experiments where strict sterility is required, filtration with 0.22um filter is required.
RefSeq:	NP_000539
RefSeq Size:	4287 bp
RefSeq ORF:	5424 bp
Locus ID:	7249
Cytogenetics:	16p13.3
Domains:	Rap_GAP, Tuberin
Protein Families:	Druggable Genome
Protein Pathways:	Insulin signaling pathway, mTOR signaling pathway, p53 signaling pathway
MW:	157.2 kDa

Gene Summary:

Mutations in this gene lead to tuberous sclerosis complex. Its gene product is believed to be a tumor suppressor and is able to stimulate specific GTPases. The protein associates with hamartin in a cytosolic complex, possibly acting as a chaperone for hamartin. Alternative splicing results in multiple transcript variants encoding different isoforms. [provided by RefSeq, Jul 2008]