

Product datasheet for **RC402366**

Tuberin (TSC2) (NM_000548) Human Mutant ORF Clone

Product data:

Product Type:	Mutant ORF Clones
Product Name:	Tuberin (TSC2) (NM_000548) Human Mutant ORF Clone
Mutation Description:	A607E
Affected Codon#:	607
Affected NT#:	1820
Nucleotide Mutation:	TSC2 Mutant (A607E), Myc-DDK-tagged ORF clone of Homo sapiens tuberous sclerosis 2 (TSC2), transcript variant 1 as transfection-ready DNA
Effect:	Tuberous sclerosis
Symbol:	TSC2
Synonyms:	LAM; PPP1R160; TSC4
E. coli Selection:	Kanamycin (25 ug/mL)
Mammalian Cell Selection:	Neomycin
Vector:	pCMV6-Entry (PS100001)
Tag:	Myc-DDK
ACCN:	NM_000548
ORF Size:	5421 bp
Restriction Sites:	SgfI-XhoI
ORF Nucleotide Sequence:	>RC402366 representing NM_000548 Red=Cloning site Blue=ORF Green=Tags(s)

TTTTGTAATACGACTCACTATAGGGCGCCGGGAATTCGTCGACTGGATCCGGTACCGAGGAGATCTGCC
GCC**CGATCGCC**

ATGGCCAAACCAACAAGCAAAGATTCAGGCTTGAAGGAGAAGTTTAAGATTCTGTTGGGACTGGGAACAC
CGAGGCCAAATCCCAGGTCTGCAGAGGGTAAACAGACGGAGTTTATCATCACCGCGGAAATACTGAGAGA
ACTGAGCATGGAATGTGGCCTCAACAATCGCATCCGGATGATAGGGCAGATTTGTGAAGTCGCAAAAACC
AAGAAATTTGAAGAGCACGCAGTGAAGCACTCTGGAAGGCGGTCGCGGATCTGTTGCAGCCGGAGCGGC
CGCTGGAGGCCCGGCACGCGGTCTGGCTCTGCTGAAGGCCATCGTGCAGGGGCAGGGCGAGCGTTTGGG
GGTCTCAGAGCCCTCTCTTTAAGGTCATCAAGGATTACCCTTCCAACGAAGACCTTCACGAAAGGCTG
GAGTTTTCAAGGCCCTCACAGACAATGGGAGACACATCACCTACTTGGAGGAAGAGCTGGCTGACTTTG



[View online »](#)

TCCTGCAGTGGATGGATGTTGGCTTGTCTCGGAATTCCTTCTGGTGCTGGTGAACCTGGTCAAATTCAA
 TAGCTGTTACCTCGACGAGTACATCGCAAGGATGGTTCAGATGATCTGTCTGCTGTGCGTCCGGACCGCG
 TCCTCTGTGGACATAGAGGTCTCCCTGCAGGTGCTGGACGCCGTGGTCTGCTACAACCTGCCTGCCGGCTG
 AGAGCCTCCCGCTGTTTCATCGTTACCCTCTGTGCGACCATCAACGTCAAGGAGCTCTGCGAGCCTTGCTG
 GAAGCTGATGCGGAACCTCCTTGGCACCACCTGGGCCACAGCGCCATCTACAACATGTGCCACCTCATG
 GAGGACAGACCTACATGGAGGACCGCCCTGCTGAGAGGAGCCGTGTTTTTGTGGCGATGGCTCTCT
 GGGGAGCCACCAGGCTATTCTCTCAGGAATCGCCGACATCTGTGTTGCCATATTTTACCAGGCCAT
 GGCAATGTCGAAACGAGGTGGTGTCTATGAGATCGTCCGTCCATCACCAGGCTCATCAAGAAAGTATAGG
 AAGGAGCTCCAGGTGGTGGCGTGGGACATTCTGCTGAACATCATCGAACGGCTCCTTACAGAGCTCCAGA
 CCTTGGACAGCCCGGAGCTCAGGACCATCGTCCATGACCTGTTGACCACGGTGGAGGAGCTGTGTGACCA
 GAACGAGTTCACGGGTCTCAGGAGAGATACTTGAACGGTGGAGAGATGTGCGGACCAGAGGCCTGAG
 TCCTCCCTCTGAACCTGATCTCTATAGAGCGCAGTCCATCCACCCGGCCAAGGACGGCTGGATTGAGA
 ACCTGCAGGCGCTGATGGAGAGATTCTCAGGAGCGAGTCCCGAGGCGCCGTGCGCATCAAGGTGCTGGA
 CGTGTCTCCTTTGTGCTGCTCATCAACAGGCAGTTCTATGAGGAGGAGCTGATTAACCTAGTGGTCATC
 TCGCAGCTCTCCACATCCCGAGGATAAAGACCACCAGTCCGAAAGCTGGCCACCCAGTTGCTGGTGG
 ACCTGGCAGAGGGCTGCCACACACACCCTTCAACAGCCTGCTGGACATCATCGAGAAGGTGATGGCCCC
 CTCCCTCTCCCCACCCCGGAGCTGGAAGAAAGGGATGTGGCCGCATACTCGGCCCTCCTTGGAGGATGTG
 AAGACAGCCGTCTGGGGCTTCTGGTCACTTTCAGACCAAGCTGTACACCTGCCTGCAAGCCACGCCA
 CGCGTGTGATGAGATGCTGGTCCAGCCACATTCAGTCCACTACAAGCACAGCTACACCTGCCAATCGA
 GAGCAGCATCCGGCTGCAGGCCCTTGTACTTCTGTTGCTGCTGCGGGCCGACTCACTGCACCCGCTGGGC
 CTGCCAACAAAGGATGGAGTGTGCGGTTCCAGCCCTACTGCGTCTGCGACTACATGGAGCCAGAGAGAG
 GCTCTGAGAAGAAGACCAGCGGCCCTTCTCCTCCACAGGGCCTCCTGGCCCGCGCCTGCAGGCC
 CGCCGCTGCGGCTGGGGTCCGTGCCCTACTCCCTGCTCTCCCGCTCCTGCTGCAGTGTGAAGCAGGAG
 TCTGACTGGAAGGTGCTGAAGCTGGTTCGGGAGGCTGCCTGAGTCCCTGCGCTATAAAGTGTCTACT
 TTACTTCCCTTGCAGTGTGGACCAGCTGTGCTGCTCTGCTCCATGCTTTTACAGGCCAAAGACACT
 GGAGCGGCTCCGAGGCGCCCAAGGCTTCTCCAGAAGTACTGACCTGGCCGTGGTTCAGTGTG
 ACAGCATTAACTCTTACCATAACTACCTGGACAAAACCAACAGCGGAGATGGTCTACTGCCTGGAGC
 AGGGCCTCATCCACCGCTGTGCCAGCCAGTGCCTGCTGGCCTTGTCCATCTGCAGCGTGGAGATGCCTGA
 CATCATCATCAAGGCGCTGCCTGTTCTGGTGGTGAAGCTCACGCACATCTCAGCCACAGCCAGCATGGCC
 GTCCACTGCTGGAGTTCCTGTCCACTCTGCCAGGCTGCCGCACCTCTACAGGAACTTTGCCCGGAGC
 AGTATGCCAGTGTGTTGCCATCTCCCTGCCGTACACCAACCCCTCAAGTTTAAATCAGTACATCGTGTG
 TCTGGCCATCAGCTCATAGCCATGTGGTTCATCAGGTGCCGCTGCCCTTCCGGAAGGATTTTGTCCCT
 TTCATCTAAGGGCCTGCGGTCCAATGTCTCTTGTCTTTTGTGATGACACCCCGAGAAGGACAGCTTCA
 GGGCCCGGAGTACTAGTCTAACGAGAGACCAAGAGTCTGAGGATAGCCAGACCCCCCAACAAGGCTT
 GAATAACTCTCCACCCGTGAAAGAAATCAAGGAGAGCTCTGCAGCCGAGGCCCTCCGGTGCAGCAGCATC
 AGTGTGTCTGAACATGTGGTCCGAGCAGGATACAGACGTCCCTCACCAGTGCAGCTGGGGTCTGCAG
 ATGAGAAGTCCGTGGCCAGGCTGACGATAGCCTGAAAAACCTCCACCTGGAGCTCACGGAAACCTGTCT
 GGACATGATGGCTCGATACGTCTTCTCAACTTACGGCTGTCCGAAAGAGTCTCCTGTGGGCGAGTTC
 CTCTAGCGGGTGGCAGGACAAAACCTGGCTGGTGGGAACAAGCTTGTACTGTGACGACAAGCGTGG
 GAACCGGACCCGGTCTTACTAGGCCCTGGACTCGGGGAGCTGCAGTCCGGCCCGGAGTCCGAGCTCCAG
 CCCCAGGGTGCATGTGAGACAGACCAAGGAGGCCCGGCAAGCTGGAGTCCAGGCTGGGCAGCAGGTG
 TCCCGTGGGGCCCGGATCGGGTCCGTTCATGTGCGGGGGCCATGGTCTTCGAGTTGGCGCCCTGGACG
 TGCCGGCTCCAGTTCTGGGCAGTGCCTTCTCCAGGACCACGGACTGCACCAGCCGCAAACTGGA
 GAAGGCCTCAGCTGCCACCCGGTTCCTGTGACAGGAGAAGACGAACTGGCGGCCTATGTCCCCCTGCTG
 ACCCAGGGCTGGGCGGAGATCCTGGTCCGGAGGCCACAGGGAACACCAGCTGGTGTGAGCCTGGAGA
 ACCCGCTCAGCCCTTCTCCTCGACATCAACAACATGCCCTGCAGGAGCTGTCTAACCCCTCATGGC
 GGCTGAGCGCTTCAAGGAGCACCGGGACACAGCCCTGTACAAGTCACTGTGGTCCGGCAGCCAGCAGC
 GCCAAACCCCTCCTCTGCCTCGCTCCAACACAGTGGCTCTTCTCCTCCCTGTACCAGTCCAGCTGCC
 AAGGACAGCTGCACAGGAGCTTCTTCTGGGCGACTCCGCCGTGGTTCATGGAGGAGGGAAGTCCGGGCGA
 GGTTCTGTGCTGGTGGAGCCCCAGGGTTGGAGGACGTTGAGGCAGCGCTAGGCATGGACAGGCGCAGC
 GATGCCTACAGCAGGTGCTCCTCAGTCTCCAGCCAGGAGGAGAAGTGCCTCCACGCGGAGGAGCTGGTTG
 GCAGGGGCATCCCATCGAGCGAGTGTCTCCTCGGAGGGTGGCCGGCCCTCTGTGGACCTCTCCTTCCA

GCCCTCGCAGCCCTGAGCAAGTCCAGCTCCTCTCCCGAGCTGCAGACTCTGCAGGACATCCTCGGGGAC
CCTGGGGACAAGGCCGACGTGGGCCGGCTGAGCCCTGAGGTTAAGGCCGGTACAGTCAGGGACCCTGG
ACGGGGAAAGTGTGCTGGTGGCCTCGGGCGAAGACAGTCGGGGCCAGCCGAGGGTCCCTTGCCCTC
CAGTCCCCCGCTCGCCAGTGGCCTCCGGCCCCGAGGTTACACCATCTCCGACTCGGGCCATCACGC
AGGGGCAAGAGAGTAGAGAGGGACGCCCTTAAGAGCAGAGCCACAGCCTCCAATGCAGAGAAAGTGCCAG
GCATCAACCCAGTTTCGTGTTCTGCAGCTCTACCATTCCCCCTTCTTTGGCGACGAGTCAAACAAGCC
AATCCTGTGCTGCCAATGAGTCACAGTCCTTTGAGCGGTGGTGCAGCTCCTCGACCAGATCCCATCATA
GACACCCACAAGATCGCCGTCTGTATGTTGGAGAAGGCCAGAGCAACAGCGAGCTCGCCATCCTGTCCA
ATGAGCATGGCTCCTACAGGTACACGGAGTTCCTGACGGGCTGGGCCGGCTCATCGAGCTGAAGGACTG
CCAGCCGGACAAGGTGTACCTGGGAGGCCTGGACGTGTGTGGTGAAGGACGGCCAGTTCACCTACTGCTGG
CACGATGACATCATGCAAGCCGTCTTCCACATCGCCACCCTGATGCCACCAAGGACGTGGACAAGCACC
GCTGCGACAAGAAGCGCCACCTGGGCAACGACTTTGTGTCCATTGTCTACAATGACTCCGGTGAAGACTT
CAAGCTTGGCACCATCAAGGGCCAGTTCACCTTTGTCCACGTGATCGTCACCCCGCTGGACTACGAGTGC
AACCTGGTGTCCCTGCAGTGCAGGAAAGACATGGAGGGCCTTGTGGACACCAGCGTGGCCAAGATCGTGT
CTGACCGCAACCTGCCCTTCGTGGCCCGCCAGATGGCCCTGCACGAAATATGGCCTCACAGGTGCATCA
TAGCCGCTCCAACCCACCGATATCTACCCCTCCAAGTGGATTGCCCGGCTCCGCCACATCAAGCGGCTC
CGCCAGCGGATCTGCGAGGAAGCCGCTACTCCAACCCAGCCTACCTCTGGTGCACCCTCCGTCCATA
GCAAAGCCCTGCACAGACTCCAGCCGAGCCACACCTGGCTATGAGGTGGGCCAGCGGAAGCGCCTCAT
CTCCTCGGTGGAGGACTTCACCGAGTTTGTG

AGCGGACCGACGCGTACGCGGCCGCTCGAGCAGAACTCATCTCAGAAGAGGATCTGGCAGCAAATGATATCC
TGGATTACAAGGATGACGACGA TAAGGTTTAA

Protein Sequence: >RC402366 representing NM_000548
 Red=Cloning site Green=Tags(s)

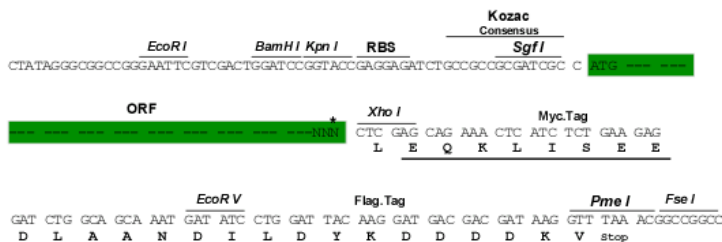
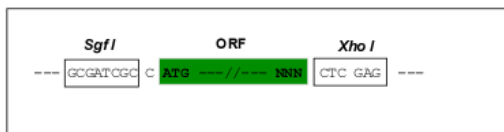
MAKPTSKDSSLKEKFKILLGLGTTPPNPRSAEGKQTEFIITAEILRELSMECGLNNRIRMIGQICEVAKT
 KKFEEHAVEALWKAVADLLQPERPEARHAVLALLKAIYVQGGGERLGLRALFFKVIKDYPSNEDLHERL
 EVFKALTDNGRHITYLEEELADFVLLQWMDVGLSSEFLLVLVNLVKFNCSYLDEYIARMVQMICLLCVRTA
 SSVDIIEVSLQVLDVAVVCYNCLPAESLPLFIVTLCRTINVKELCEPCWKLMRNLLGTHLGHSAIYNMCHLM
 EDRAVMEDAPLLRGAVFFVGMALWGAHRLYSLRNSPTSVLPSFYQAMACPNVEVSYEIVLSITRLIKKYR
 KELQVVAVDILLNIIERLLQQLQTLDSPELRTIVHDLTTVEELCDQNEFHGSQERYFELVERCADQRPE
 SLLNLISYRAQSIHPAKDGWIQNLQALMERFFRSESARGAVRIKVLVDVLSFVLLINRQFYEEELINSVVI
 SQLSHIPEDKDHQVRKLATQLLDLAEGCHTHHFNSLLDIEKVMARSLSPPELEERDVAAYSASLEDV
 KTAVLGLLVILQTKLYLPASHATRVYEMLVSHIQLHYKHSYTLPIESSIRLQAFDFLLLRADSLHRLG
 LPNKDGVVRFSPYCVCDYMEPERGSEKKTSGPLSPPTGPPGAPAGPAVRLGSVPYSLLFRVLLQCLKQE
 SDWKVLLKVLGRLPESLRYKVLIFTPSCSVDQLCSALCSMLSGPKTLERLRGAPEGFRTDLHLAVVPL
 TALISYHNYLTKQREMYYCLEQGLIHRCASQCVVALSICSVEMPDIIKALPVLVVKLTHISATASMA
 VPILLEFLSTLARLPHLYRNFAAEQYASVFAISLPYTNPSKFNQYIVCLAHHVIAMWFIRCLPFRKDFVP
 FITKGLRSNVLLSFDDETPKDSFRARSTSLNERPKSLRIARPPKQGLNNSPPVKEFKESSAAEAFCRSI
 SVSEHVRSRIQTSLSASLGSADENVAQADDSLKNLHLELTETCLDMMARYVFSNFTAVPKRSPVGEF
 LLAGGRKTWLVGNKLVTVTTSTVGTGTRSLGLDSEGLQSGPSSSSSPGVHVRQTKEAPAKLESQAGQV
 SRGARDVRVSMSSGGHLRVGALDVPASQFLGSATSPGPRTPAAKPEKASAGTRVPVQETNLAAVYVPL
 TQGWAEILVRRPTGNTSWLMSLENLSPFSSDINNMPQLQELSNALMAAERFKEHRDTALYKLSVPAAST
 AKPPPLPRSNTVASFSSLYQSSCQQLHRSVSWADSAVVMEEGSPGEVPLVEPPGLEDEAALGMDRR
 DAYSRSSSVSSQEEKSLHAEELVGRGPIERVVSSEGGRPVDFLQPSQPLSKSSSSPELQTLQDILGD
 PGDKADVGRLSPEVKARSQSGTLDGESAAWSASGEDSRGQPEGPLPSSSPRSPSGLRPRGYTISDSAPSR
 RGKRVKRALKSRATASNAEKVPGINPFSVFLQLYHSPFFGDESNKPIILLPNEQSFFERSVQLLDQIPSY
 DTHKIAVLYVGEQSNSELAILSNEHGSYRYTEFLTGLGRLIELKDCQPKVYLGGLDVCGEDGQFTYCW
 HDDIMQAVFHIATLMPTKDVDKHRCDDKRLHNDVFSIVYNDSEDFKLTGKGFNFVHVIVTPLDYEC
 NLVSLQCRKDMGLVDTSVAKIVSDRNLPFVARQMALHANMASQVHHSRNPDIYPSKWIARLRHKRL
 RQRICEEAAYSNPPLPLVHPSSHAKAPQTPAEPTPGYEVGQRKRLISSVEDFTEFV

SGPTRRRLLEQKLI SEEDLAANDILDYKDDDDKV

Restriction Sites: SgfI-XhoI

Cloning Scheme:

Cloning sites used for ORF Shuttling:



* The last codon before the Stop codon of the ORF

OTI Disclaimer:	The molecular sequence of this clone aligns with the gene accession number as a point of reference only. However, individual transcript sequences of the same gene can differ through naturally occurring variations (e.g. polymorphisms), each with its own valid existence. This clone is substantially in agreement with the reference, but a complete review of all prevailing variants is recommended prior to use. More info
OTI Annotation:	This clone was engineered to express the complete ORF with an expression tag. Expression varies depending on the nature of the gene.
Components:	The ORF clone is ion-exchange column purified and shipped in a 2D barcoded Matrix tube containing 10ug of transfection-ready, dried plasmid DNA (reconstitute with 100 ul of water).
RefSeq:	NP_000539
RefSeq Size:	5421 bp
RefSeq ORF:	5424 bp
Locus ID:	7249
Cytogenetics:	16p13.3
Domains:	Rap_GAP, Tuberin
Protein Families:	Druggable Genome
Protein Pathways:	Insulin signaling pathway, mTOR signaling pathway, p53 signaling pathway
MW:	198.8 kDa
Gene Summary:	Mutations in this gene lead to tuberous sclerosis complex. Its gene product is believed to be a tumor suppressor and is able to stimulate specific GTPases. The protein associates with hamartin in a cytosolic complex, possibly acting as a chaperone for hamartin. Alternative splicing results in multiple transcript variants encoding different isoforms. [provided by RefSeq, Jul 2008]