

Product datasheet for **RC402202**

LKB1 (STK11) (NM_000455) Human Mutant ORF Clone

Product data:

Product Type:	Mutant ORF Clones
Product Name:	LKB1 (STK11) (NM_000455) Human Mutant ORF Clone
Mutation Description:	Q112X
Affected Codon#:	112
Affected NT#:	334
Nucleotide Mutation:	STK11 Mutant (Q112X), Myc-DDK-tagged ORF clone of Homo sapiens serine/threonine kinase 11 (STK11) as transfection-ready DNA
Effect:	Peutz-Jeghers syndrome
Symbol:	STK11
Synonyms:	hLKB1; LKB1; PJS
E. coli Selection:	Kanamycin (25 ug/mL)
Mammalian Cell Selection:	Neomycin
Vector:	pCMV6-Entry (PS100001)
Tag:	Myc-DDK
ACCN:	NM_000455
ORF Size:	333 bp
Restriction Sites:	Sgfi-MluI



[View online »](#)

ORF Nucleotide Sequence:

>RC402202 representing NM_000455
 Red=Cloning site Blue=ORF Green=Tags(s)

TTTTGTAATACGACTCACTATAGGGCGGCCGGAATTCGTCGACTGGATCCGGTACCGAGGAGATCTGCC
 GCC**CGGATCGCC**

ATGAGGTGGTGGACCCGCAGCAGCTGGGCATGTTACGGAGGGCGAGCTGATGTGGTGGGTATGGACA
 CGTTCATCCACGCATCGACTCCACCGAGGTCTCTACCAGCCGCGCCGAAGCGGGCCAAGCTCATCGG
 CAAGTACCTGATGGGGGACCTGCTGGGGGAAGGCTCTTACGGCAAGGTGAAGGAGGTGCTGGACTCGGAG
 ACGCTGTGCAGGAGGGCCGTC AAGATCCTCAAGAAGAAGAAGTTGCGAAGGATCCCCAACGGGGAGGCCA
 ACGTGAAGAAGGAAATCAACTACTGAGGAGGTTACGGCACAAAAATGTCATC

AG**CGGACCG**ACGCGTACGCGGCCGCTCGAGCAGAAACTCATCTCAGAAGAGGATCTGGCAGCAAATGATATCC
 TGGATTACAAGGATGACGACGA TAAGGTTTAA

Protein Sequence:

>RC402202 representing NM_000455
 Red=Cloning site Green=Tags(s)

MEVVDPPQLGMFTEGELMSVGMDFIHRIDSTEVYQPRRKRKALIGKYLMDLLGEGSYGKVKVELDSE
 TLCRRAVKILKKKLRIPNGEANVKKEIQLLRRLRHKNVI

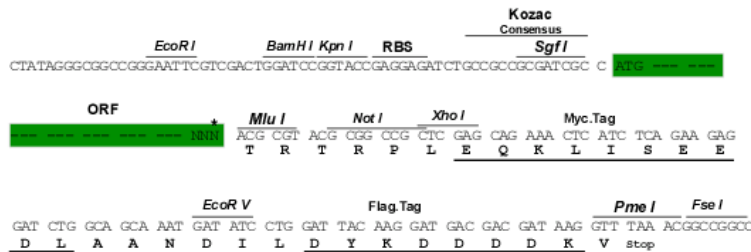
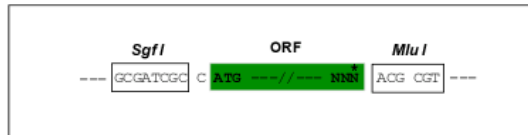
SGPTRRRLEQKLISEEDLAANDILDYKDDDDKV

Restriction Sites:

Sgfl-MluI

Cloning Scheme:

Cloning sites used for ORF Shutting:



* The last codon before the Stop codon of the ORF

OTI Disclaimer:	Due to the inherent nature of this plasmid, standard methods to replicate additional amounts of DNA in E. coli are highly likely to result in mutations and/or rearrangements. Therefore, OriGene does not guarantee the capability to replicate this plasmid DNA. Additional amounts of DNA can be purchased from OriGene with batch-specific, full-sequence verification at a reduced cost. Please contact our customer care team at custsupport@origene.com or by calling 301.340.3188 option 3 for pricing and delivery.
	The molecular sequence of this clone aligns with the gene accession number as a point of reference only. However, individual transcript sequences of the same gene can differ through naturally occurring variations (e.g. polymorphisms), each with its own valid existence. This clone is substantially in agreement with the reference, but a complete review of all prevailing variants is recommended prior to use. More info
OTI Annotation:	This clone was engineered to express the complete ORF with an expression tag. Expression varies depending on the nature of the gene.
Components:	The ORF clone is ion-exchange column purified and shipped in a 2D barcoded Matrix tube containing 10ug of transfection-ready, dried plasmid DNA (reconstitute with 100 ul of water).
RefSeq:	NP_000446
RefSeq Size:	333 bp
RefSeq ORF:	1302 bp
Locus ID:	6794
Cytogenetics:	19p13.3
Domains:	pkinese, TyrKc, S_TKc
Protein Families:	Druggable Genome, Protein Kinase
Protein Pathways:	Adipocytokine signaling pathway, mTOR signaling pathway
MW:	12.2 kDa
Gene Summary:	This gene, which encodes a member of the serine/threonine kinase family, regulates cell polarity and functions as a tumor suppressor. Mutations in this gene have been associated with Peutz-Jeghers syndrome, an autosomal dominant disorder characterized by the growth of polyps in the gastrointestinal tract, pigmented macules on the skin and mouth, and other neoplasms. Alternate transcriptional splice variants of this gene have been observed but have not been thoroughly characterized. [provided by RefSeq, Jul 2008]