

Product datasheet for **RC401937**

NF2 (NM_000268) Human Mutant ORF Clone

Product data:

Product Type:	Mutant ORF Clones
Product Name:	NF2 (NM_000268) Human Mutant ORF Clone
Mutation Description:	W184X
Affected Codon#:	184
Affected NT#:	552
Nucleotide Mutation:	NF2 Mutant (W184X), Myc-DDK-tagged ORF clone of Homo sapiens neurofibromin 2 (merlin) (NF2), transcript variant 1 as transfection-ready DNA
Effect:	Neurofibromosis 2
Symbol:	NF2
Synonyms:	ACN; BANF; merlin-1; SCH
E. coli Selection:	Kanamycin (25 ug/mL)
Mammalian Cell Selection:	Neomycin
Vector:	pCMV6-Entry (PS100001)
Tag:	Myc-DDK
ACCN:	NM_000268
ORF Size:	549 bp
Restriction Sites:	Sgfl-Mlul



[View online »](#)

ORF Nucleotide Sequence:

>RC401937 representing NM_000268
 Red=Cloning site Blue=ORF Green=Tags(s)

TTTTGTAATACGACTCACTATAGGGCGGCCGGAATTCGTCGACTGGATCCGGTACCGAGGAGATCTGCC
 GCC**CGCATCGCC**

ATGGCCGGGGCCATCGTTCCCGCATGAGCTTTCAGCTCTCTCAAGAGGAAGCAACCCAAGACGTTACCCG
 TGAGGATCGTCACCATGGACGCCGAGATGGAGTTCAATTGCGAGATGAAGTGGAAAGGGAAGGACCTTT
 TGATTTGGTGTGCCGACTCTGGGGCTCCGAGAAACCTGGTTCTTTGGACTGCAGTACACAATCAAGGAC
 ACAGTGGCCTGGCTCAAATGGACAAGAAGGACTGGATCATGATGTTTCAAAGGAAGAACCAGTCACCT
 TTCACTTCTGGCCAAATTTTATCCTGAGAATGCTGAAGAGGAGCTGGTTCAGGAGATCACACAACATTT
 ATTCTTCTACAGGTAAGAAGCAGATTTAGATGAAAAGATCTACTGCCCTCTGAGGCTTCTGTGCTC
 CTGGCTTCTTACGCCCTCAGGCCAAGTATGGTACTACGACCCAGTGTTCACAAGCGGGGATTTTGG
 CCCAAGAGGAATTGCTTCAAAAAGGTAATAAATCTGTATCAGATGACTCCGGAATG

AG**CGGACCG**ACGCGTACGCGGCCGCTCGAGCAGAACTCATCTCAGAAGAGGATCTGGCAGCAAATGATATCC
 TGGATTACAAGGATGACGACGA TAAGGTTTAA

Protein Sequence:

>RC401937 representing NM_000268
 Red=Cloning site Green=Tags(s)

MAGAIASRMSFSSLKRKQPKFTTVRIVTMDAEMEFNCEMKWKGKDLFDLVCRTLGLRETWFFGLQYTIKD
 TVAWLKMDKKVLDHDVSKKEEPVTFHFLAKFYPENAEELVQEITQHLFFLQVKQILDEKIYCPPEASVL
 LASAYVQAKYGDYDPSVHKRGLAQEELLPKRYINLYQMTPEM

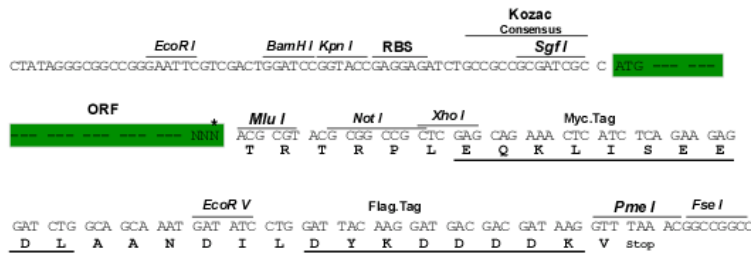
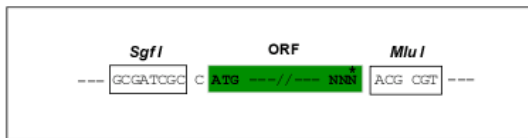
SGPTRTRRLE**QKLI**SEEDLAANDILDYKDDDDK**V**

Restriction Sites:

SgfI-MluI

Cloning Scheme:

Cloning sites used for ORF Shutting:



* The last codon before the Stop codon of the ORF

OTI Disclaimer:	<p>Due to the inherent nature of this plasmid, standard methods to replicate additional amounts of DNA in E. coli are highly likely to result in mutations and/or rearrangements. Therefore, OriGene does not guarantee the capability to replicate this plasmid DNA. Additional amounts of DNA can be purchased from OriGene with batch-specific, full-sequence verification at a reduced cost. Please contact our customer care team at custsupport@origene.com or by calling 301.340.3188 option 3 for pricing and delivery.</p> <p>The molecular sequence of this clone aligns with the gene accession number as a point of reference only. However, individual transcript sequences of the same gene can differ through naturally occurring variations (e.g. polymorphisms), each with its own valid existence. This clone is substantially in agreement with the reference, but a complete review of all prevailing variants is recommended prior to use. More info</p>
OTI Annotation:	This clone was engineered to express the complete ORF with an expression tag. Expression varies depending on the nature of the gene.
Components:	The ORF clone is ion-exchange column purified and shipped in a 2D barcoded Matrix tube containing 10ug of transfection-ready, dried plasmid DNA (reconstitute with 100 ul of water).
RefSeq:	NP_000259
RefSeq Size:	549 bp
RefSeq ORF:	1788 bp
Locus ID:	4771
Cytogenetics:	22q12.2
Domains:	B41, ERM
Protein Families:	Druggable Genome
MW:	20.1 kDa
Gene Summary:	<p>This gene encodes a protein that is similar to some members of the ERM (ezrin, radixin, moesin) family of proteins that are thought to link cytoskeletal components with proteins in the cell membrane. This gene product has been shown to interact with cell-surface proteins, proteins involved in cytoskeletal dynamics and proteins involved in regulating ion transport. This gene is expressed at high levels during embryonic development; in adults, significant expression is found in Schwann cells, meningeal cells, lens and nerve. Mutations in this gene are associated with neurofibromatosis type II which is characterized by nervous system and skin tumors and ocular abnormalities. Two predominant isoforms and a number of minor isoforms are produced by alternatively spliced transcripts. [provided by RefSeq, Jul 2008]</p>