

Product datasheet for **RC401902**

MSH2 (NM_000251) Human Mutant ORF Clone

Product data:

Product Type:	Mutant ORF Clones
Product Name:	MSH2 (NM_000251) Human Mutant ORF Clone
Mutation Description:	Q885X
Affected Codon#:	885
Affected NT#:	2653
Nucleotide Mutation:	MSH2 Mutant (Q885X), Myc-DDK-tagged ORF clone of Homo sapiens mutS homolog 2, colon cancer, nonpolyposis type 1 (E. coli) (MSH2) as transfection-ready DNA
Effect:	Colorectal cancer, non-polyposis
Symbol:	MSH2
Synonyms:	COCA1; FCC1; hMSH2; HNPCC; HNPCC1; LCFS2; MMRCS2
E. coli Selection:	Kanamycin (25 ug/mL)
Mammalian Cell Selection:	Neomycin
Vector:	pCMV6-Entry (PS100001)
Tag:	Myc-DDK
ACCN:	NM_000251
ORF Size:	2652 bp
Restriction Sites:	SgfI-MluI



[View online »](#)

ORF Nucleotide Sequence:

>RC401902 representing NM_000251
 Red=Cloning site Blue=ORF Green=Tags(s)

TTTTGTAATACGACTCACTATAGGGCGGCCGGGAATTCGTCGACTGGATCCGGTACCGAGGAGATCTGCC
 GCC**CGGATCGCC**

ATGGCGGTGCAGCCGAAGGAGACGCTGCAGTTGGAGAGCGCGGCCGAGGTCGGCTTCGTGCGCTTCTTTCC
 AGGGCATGCCGGAAGAAGCCGACCACCACAGTGCCTTTTCGACCGGGCGACTTCTATACGGCGCACGG
 CGAGGACGCGCTGCTGGCCGCCGGGAGGTGTTCAAGACCCAGGGGGTATCAAGTACATGGGGCCGCA
 GGAGCAAAGAATCTGCAGAGTGTGTGCTTAGTAAATGAATTTGAATCTTTGTAAAAGATCTTCTTC
 TGGTTCGTAGTATAGAGTTGAAGTTTATAAGAATAGAGCTGAAATAAGGCATCCAAGGAGAATGATTG
 GTATTTGGCATATAAGGCTTCTCCTGGCAATCTCTCAGTTTGAAGACATTCTTTGGTAACAATGAT
 ATGTCAGCTTCCATTGGTGTGTGGGTGTTAAATGTCCGAGTTGATGGCCAGAGACAGGTTGGAGTTG
 GGTATGTGGATTCCATACAGAGGAACTAGGACTGTGTGAATCCCTGATAATGATCAGTTCTCCAATCT
 TGAGGCTCTCCTCATCCAGATTGGACCAAAGGAATGTGTTTTACCCGGAGGAGAGACTGTGGAGACATG
 GGGAAACTGAGACAGATAATTCAAAGAGGAGGAATTCGATCACAGAAAGAAAAAGCTGACTTTTCCA
 CAAAAGACATTTATCAGGACCTCAACCGTTGTTGAAAGGCAAAAAGGGAGAGCAGATGAATAGTGTGT
 ATTGCCAGAAATGGAGAATCAGGTTGCAGTTTCATCACTGTCTGCGGTAATCAAGTTTTAGAACTCTTA
 TCAGATGATTCCAACCTTTGGACAGTTTGAAGTACTACTTTTACTTTCAGCCAGTATATGAAATTTGGATA
 TTGACAGCTCAGAGCCCTTAACCTTTTTCAGGGTCTGTTGAAGATACCACTGGCTCTCAGTCTCTGGC
 TGCTTGTCTGAATAAGTGTAAACCCCTCAAGGACAAAGACTTGTAAACCAGTGGATTAAGCAGCCTCTC
 ATGGATAAGAACAAGATTTACTTTCGTCGATTCCAGATCTTAACCGACTTGCCAAAGAAATTTCAAAGACA
 AGCAGCAAACCTACAAGATTGTTACCGACTCTATCAGGGTATAAATCAACTACCTAATGTTATACAGGCT
 CTGAAAAAACATGAAGGAAAAACACCAGAAATTATTGTTGGCAGTTTTTGTGACTCCTTACTGATCTTC
 GTTCTGACTTCTCCAAGTTTCAGGAAATGATAGAAACAACCTTTAGATATGGATCAGGTGGAAAACCATGA
 ATTCTTGTAAAACCTTCATTTGATCTAATCTCAGTGAATTAAGAGAAATAATGAATGACTTGGAAAAG
 AAGATGCAGTCAACATTAATAAGTGCAGCCAGAGATCTGGCTTGGACCCTGGCAACAGATTAACCTGG
 ATTCCAGTGCACAGTTTGGATATTACTTTCGTGTAACCTGTAAGGAAGAAAAAGTCTTCGTAACAATAA
 AAACCTTAGTACTGTAGATATCCAGAAGAATGGTGTAAATTTACCAACAGCAAATGACTTCTTTAAAT
 GAAGAGTATACCAAAAAATAAACAGAATATGAAGAAGCCAGGATGCCATTGTTAAAGAAATTTGCAATA
 TTTCTTCAAGGCTATGTAGAACCAATGCAGACACTCAATGATGTGTAGCTCAGCTAGATGCTGTTGTGAG
 CTTTGGCTCACGTGCAATGGAGCACCTGTTCCATATGTACGACCAGCCATTTTGGAGAAAGGACAAGGA
 AGAATTAATTAAGCATCCAGGCATGCTTGTGTTGAAGTTCAAGATGAAATTCATTTATTCCTAATG
 ACGTATACTTTGAAAAGATAAACAGATGTTCCACATCACTACTGGCCCAATATGGGAGGTAATCAAC
 ATATATTCGACAACTGGGGTGATAGTACTCATGGCCAAATTTGGGTGTTTTGTGCCATGTGAGTCAGCA
 GAAGTGTCCATTGTGGACTGCATCTTAGCCGAGTAGGGGCTGGTGACAGTCAATTGAAAGGAGTCTCCA
 CGTTCATGGCTGAAATGTTGAAAAGTCTTCTATCCTCAGGCTGCAACCAAAGATTCAATAAATCAT
 AGATGAATTTGGGAAGAGGAACCTTACCTACGATGGATTGGGTTAGCATGGGCTATATCAGAATACAT
 GCAACAAAGATTGGTGCTTTTGCATGTTTGAACCCATTTTCATGAACCTACTGCCTTGGCCAATCAGA
 TACCAACTGTTAATAATCTACATGTCACAGCACTACCACTGAAGAGACCTTAACTATGCTTTATCAGGT
 GAAGAAAGGTGTCTGTGATCAAAGTTTTGGATTGATGTTGCAGAGCTTGCTAATTTCCCTAAGCATGTA
 ATAGAGTGTGCTAAACAGAAAGCCCTGGAACCTGAGGAGTTTTCAGTATATTGGAGAATCGCAAGGATATG
 ATATCATGGAACCAGCAGCAAAGAAGTCTATCTGAAAAGAGAGCAAGGTGAAAAAATTATT

AG**CGGACCG**ACGCGTACGCGGCCGCTCGAGCAGAACTCATCTCAGAAGAGGATCTGGCAGCAAATGATATCC
 TGGATTACAAGGATGACGACGA TAAGGTTTAA

Protein Sequence: >RC401902 representing NM_000251
 Red=Cloning site Green=Tags(s)

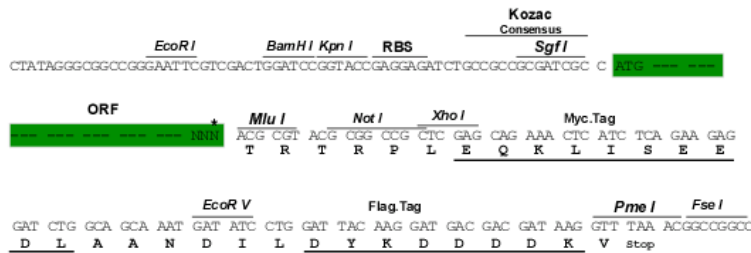
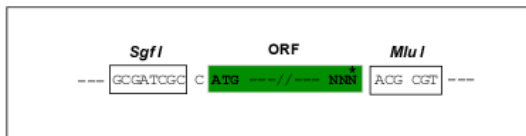
MAVQPKETLQLESAAEVGFVRFQGMPEKPTTTVRLFDRGDFYTAHGEDALLAAREVFKTQGVIKYMGPA
 GAKNLQSVVL SKMNFESFVKDLLLVRQYRVEVYKNRAGNKASKENDWYLAYKASPGNLSQFEDILFGNND
 MSASIGVVGVKMSAVDQQRQVGVGYVDSIQRLGLCEFPDNDQF SNLEALLIQIGPKECVLPGGETAGDM
 GKLRQIIQRGGILITERKKADFSTKDIYQDLNRLKGGKGEQMNSAVLPEMENQVAVSSLSAVIKFLELL
 SDDSNFGQFELTTFFDSQYMKLDIAAVRALNLFQGSVEDTTGSQSLAALLNKCKTPQGGRLVNQWIKQPL
 MDKNRIEERLNLVEAFVEDAELRQTLQEDLLRRFPDLNRLAKKFQQAANLQDCYRLYQGINQLPNVIQA
 LEKHGKHQKLLLAVFVTPLTDLRSDFSKFQEMIETTLMDQVENHEFLVKPSFDPNLSELREIMNDLEK
 KMQSTLISAARDLGLDPGKQIKLDSSAQFGYYFRVTCKEEKVLRNNKNFSTVDIQKNGVFTNSKLTSLN
 EEYTKNKTEYEEAQDAIVKEIVNISGGYVPMQTLNDVLAQLDAVVSFAHVSNGAPVPPYRPAILEKGQG
 RIILKASRHACVEVQDEIAFIPNDVYFEKDKQMFHIITGPNMGGKSTYIRQTGVIVLMAQIGCFVPCESA
 EVSIVDCILARVGAGDSQLKGVSTFMAEMLETASILRSATKDSLIIIDELGRGTSTYDGLAWAISEYI
 ATKIGAFCMFATHFHELTALANQIPTVNNLHVTALTTEETLTMLYQVKKGVCDQSFGIHVAELANFPKHV
 IECAKQKALELEEFQYIGESQGYDIMEPAAKKCYLEREQGEKII

SGP TRTRRL EQKL I SEEDLA ANDILDYK DDDDKV

Restriction Sites: SgfI-MluI

Cloning Scheme:

Cloning sites used for ORF Shutting:



* The last codon before the Stop codon of the ORF

OTI Disclaimer:	<p>Due to the inherent nature of this plasmid, standard methods to replicate additional amounts of DNA in E. coli are highly likely to result in mutations and/or rearrangements. Therefore, OriGene does not guarantee the capability to replicate this plasmid DNA. Additional amounts of DNA can be purchased from OriGene with batch-specific, full-sequence verification at a reduced cost. Please contact our customer care team at custsupport@origene.com or by calling 301.340.3188 option 3 for pricing and delivery.</p> <p>The molecular sequence of this clone aligns with the gene accession number as a point of reference only. However, individual transcript sequences of the same gene can differ through naturally occurring variations (e.g. polymorphisms), each with its own valid existence. This clone is substantially in agreement with the reference, but a complete review of all prevailing variants is recommended prior to use. More info</p>
OTI Annotation:	This clone was engineered to express the complete ORF with an expression tag. Expression varies depending on the nature of the gene.
Components:	The ORF clone is ion-exchange column purified and shipped in a 2D barcoded Matrix tube containing 10ug of transfection-ready, dried plasmid DNA (reconstitute with 100 ul of water).
RefSeq:	NP_000242
RefSeq Size:	2652 bp
RefSeq ORF:	2805 bp
Locus ID:	4436
Cytogenetics:	2p21-p16.3
Domains:	MutS_V, MutS_I, MutS_III, MutS_II, MutS_IV
Protein Families:	Druggable Genome, Stem cell - Pluripotency
Protein Pathways:	Colorectal cancer, Mismatch repair, Pathways in cancer
MW:	97.2 kDa
Gene Summary:	This locus is frequently mutated in hereditary nonpolyposis colon cancer (HNPCC). When cloned, it was discovered to be a human homolog of the E. coli mismatch repair gene mutS, consistent with the characteristic alterations in microsatellite sequences (RER+ phenotype) found in HNPCC. Two transcript variants encoding different isoforms have been found for this gene. [provided by RefSeq, Apr 2012]