

Product datasheet for **RC401901**

MSH2 (NM_000251) Human Mutant ORF Clone

Product data:

| | |
|---------------------------|--|
| Product Type: | Mutant ORF Clones |
| Product Name: | MSH2 (NM_000251) Human Mutant ORF Clone |
| Mutation Description: | Q879X |
| Affected Codon#: | 879 |
| Affected NT#: | 2635 |
| Nucleotide Mutation: | MSH2 Mutant (Q879X), Myc-DDK-tagged ORF clone of Homo sapiens mutS homolog 2, colon cancer, nonpolyposis type 1 (E. coli) (MSH2) as transfection-ready DNA |
| Effect: | Colorectal cancer, non-polyposis |
| Symbol: | MSH2 |
| Synonyms: | COCA1; FCC1; hMSH2; HNPCC; HNPCC1; LCFS2; MMRCS2 |
| E. coli Selection: | Kanamycin (25 ug/mL) |
| Mammalian Cell Selection: | Neomycin |
| Vector: | pCMV6-Entry (PS100001) |
| Tag: | Myc-DDK |
| ACCN: | NM_000251 |
| ORF Size: | 2634 bp |
| Restriction Sites: | SgfI-MluI |



[View online »](#)

**ORF Nucleotide
Sequence:**

>RC401901 representing NM_000251
 Red=Cloning site Blue=ORF Green=Tags(s)

TTTTGTAATACGACTCACTATAGGGCGGCCGGGAATTCGTCGACTGGATCCGGTACCGAGGAGATCTGCC
 GCC**CGGATCGCC**

ATGGCGGTGCAGCCGAAGGAGACGCTGCAGTTGGAGAGCGCGCCGAGGTCGGCTTCGTGCGCTTCTTTCC
 AGGGCATGCCGGAAGAAGCCGACCACCACAGTGCCTTTTCGACCGGGCGACTTCTATACGGCGCACGG
 CGAGGACGCGCTGCTGGCCGCCGGGAGGTGTTCAAGACCCAGGGGTGATCAAGTACATGGGGCCGCA
 GGAGCAAAGAATCTGCAGAGTGTGTGCTTAGTAAAATGAATTTTGAATCTTTTGTAAAAGATCTTCTTC
 TGGTTCGTAGTATAGAGTTGAAGTTTATAAGAATAGAGCTGGAATAAGGCATCCAAGGAGAATGATTG
 GTATTTGGCATATAAGGCTTCTCCTGGCAATCTCTCAGTTTGAAGACATTCTTTGGTAACAATGAT
 ATGTCAGCTTCCATTGGTGTGTGGGTGTTAAAATGTCCGAGTTGATGGCCAGAGACAGGTTGGAGTTG
 GGTATGTGGATTCCATACAGAGGAACTAGGACTGTGTGAATTCCTGATAATGATCAGTTCTCCAATCT
 TGAGGCTCTCCTCATCCAGATTGGACCAAAGGAATGTGTTTTACCCGGAGGAGAGACTGTGGAGACATG
 GGGAAACTGAGACAGATAATTCAAAGAGGAGGAATTCGATCACAGAAAGAAAAAGCTGACTTTTCCA
 CAAAAGACATTTATCAGGACCTCAACCGTTGTTGAAAGGCAAAAAGGGAGAGCAGATGAATAGTCTGT
 ATTGCCAGAAATGGAGAATCAGGTTGCAGTTTCATCACTGTCTGCGGTAATCAAGTTTTTGAAGCTTTA
 TCAGATGATTCCAACCTTTGGACAGTTTGAAGTACTACTTTTACTTTCAGCCAGTATATGAAATTTGGATA
 TTGACAGCTCAGAGCCCTTAACCTTTTTCAGGGTCTGTTGAAGATACCACTGGCTCTCAGTCTCTGGC
 TGCTTGTCTGAATAAGTGTAAAACCCCTCAAGGACAAAGACTTGTAAACCAGTGGATTAAGCAGCCTCTC
 ATGGATAAGAACAAGAATAGAGGAGAGATTGAATTTAGTGAAGCTTTTGTAGAAGATGCAGAATTTAGGC
 AGACTTTACAAGAAGATTTACTTCGTGATTCCAGATCTTAACCGACTTGCCAAAGAATTTCAAAGACA
 AGCAGCAAACCTACAAGATTGTTACCGACTCTATCAGGGTATAAATCAACTACCTAATGTTATACAGGCT
 CTGAAAAAACATGAAGGAAAAACACCAGAAATTATTGTTGGCAGTTTTTGTGACTCCTTACTGATCTTC
 GTTCTGACTTCTCCAAGTTTCAGGAAATGATAGAAACAACCTTTAGATATGGATCAGGTGGAAAACCATGA
 ATTCCTTGTAACCTTCATTTGATCCTAATCTCAGTGAATTAAGAGAAATAATGAATGACTTGGAAAAG
 AAGATGCAGTCAACATTAATAAGTGCAGCCAGAGATCTGGCTTGGACCCTGGCAACAGATTAACCTGG
 ATTCCAGTGCACAGTTTGGATATTACTTTCGTGAACCTGTAAGGAAGAAAAAGCTTTCGTAACAATAA
 AAACCTTAGTACTGTAGATATCCAGAAGAATGGTGTAAATTTACCAACAGCAAATGACTTCTTTAAAT
 GAAGAGTATACCAAAAAATAAACAGAATATGAAGAAGCCAGGATGCCATTGTTAAAGAAATTTGCAATA
 TTTCTTCAAGGCTATGTAGAACCAATGCAGACACTCAATGATGTGTAGCTCAGCTAGATGCTGTTGTGAG
 CTTTGGCTCACGTGCAATGGAGCACCTGTTCCATATGTACGACCAGCCATTTTGGAGAAAGGACAAGGA
 AGAATTAATTAAGCATCCAGGCATGCTTGTGTTGAAGTTCAAGATGAAATTCATTTATTCCTAATG
 ACGTATACTTTGAAAAGATAAACAGATGTTCCACATCACTACTGGCCCAATATGGGAGGTAATCAAC
 ATATATTCGACAACTGGGGTGATAGTACTCATGGCCAAATTTGGGTGTTTTGTGCCATGTGAGTCAGCA
 GAAGTGTCCATTGTGGACTGCATCTTAGCCGAGTAGGGGCTGGTGACAGTCAATTGAAAGGAGTCTCCA
 CGTTCATGGCTGAAATGTTGAAACTGCTTCTATCCTCAGGCTGCAACCAAAGATTCAATAAATCAT
 AGATGAATTTGGGAAGAGGAACCTTACCTACGATGGATTGGGTTAGCATGGGCTATATCAGAATACAT
 GCAACAAAGATTGGTGCTTTTTCATGTTTGAACCCATTTTCATGAACCTACTGCCTTGGCCAATCAGA
 TACCAACTGTTAATAATCTACATGTCACAGCACTACCACTGAAGAGACCTTAACTATGCTTTATCAGGT
 GAAGAAAGGTGTCTGTGATCAAAGTTTGGGATTCATGTTGCAGAGCTTGCTAATTTCCCTAAGCATGTA
 ATAGAGTGTGCTAAACAGAAAGCCCTGGAACCTGAGGAGTTTCAGTATATTGGAGAATCGCAAGGATATG
 ATATCATGGAACAGCAGCAAAGAAGTCTATCTGAAAGAGAG

AG**CGGACCG**ACGCGTACGCGGCCGCTCGAGCAGAACTCATCTCAGAAGAGGATCTGGCAGCAAATGATATCC
 TGGATTACAAGGATGACGACGA TAAGGTTTAA

Protein Sequence: >RC401901 representing NM_000251
 Red=Cloning site Green=Tags(s)

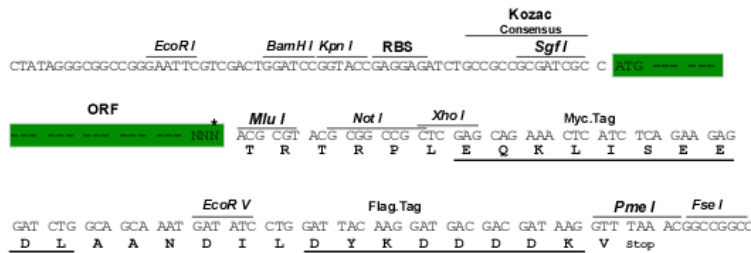
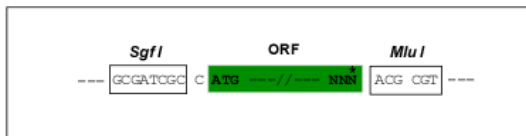
MAVQPKETLQLESAAEVGFVRFQGMPEKPTTTVRLFDRGDFYTAHGEDALLAAREVFKTQGVIKYMGPA
 GAKNLQSVVL SKMNFESFVKDLLLVRQYRVEVYKNRAGNKASKENDWYLAYKASPGNLSQFEDILFGNND
 MSASIGVVGVKMSAVDQQRQVGVGYVDSIQRLGLCEFPDNDQFSNLEALLIQIGPKECVLPGGETAGDM
 GKLRQIIQRGGILITERKKADFSTKDIYQDLNRLLLKGGKGEQMNSAVLPEMENQVAVSSLSAVIKFLELL
 SDDSNFGQFELTTFFDSQYMKLDIAAVRALNLFQGSVEDTTGSQSLAALLNKCKTPQGRLVNQWIKQPL
 MDKNRIEERLNLVEAFVEDAELRQTLQEDLLRRFPDLNRLAKKFQQAANLQDCYRLYQGINQLPNVIQA
 LEKHGKHQKLLLAVFVTPLTDLRSDFSKFQEMIETTLDMDQVENHEFLVKPSFDPNLSELREIMNDLEK
 KMQSTLISAARDLGLDPGKQIKLDSSAQFGYYFRVTCKEEKVLRNNKNFSTVDIQKNGVFTNSKLTSLN
 EEYTKNKTEYEEAQDAIVKEIVNISGGYVPMQTLNDVLAQLDAVVSFAHVSNGAPVPPYRPAILEKGQG
 RIILKASRHACVEVQDEIAFIPNDVYFEKDKQMFHIITGPNMGGKSTYIRQTGVIVLMAQIGCFVPCESA
 EVSIVDCILARVGAGDSQLKGVSTFMAEMLETASILRSATKDSLIIIDELGRGTSTYDGFGLAWAISEYI
 ATKIGAFCMFATHFHELTALANQIPTVNNLHVTALTTEETLTMLYQVKKGVCDQSFGIHVAELANFPKHV
 IECAKQKALELEEFQYIGESQGYDIMEPAAKKCYLERE

SGP TRTRRL EQKL I SEEDLA AND I LDYK D D D D K V

Restriction Sites: SgfI-MluI

Cloning Scheme:

Cloning sites used for ORF Shutting:



* The last codon before the Stop codon of the ORF

| | |
|--------------------------|--|
| OTI Disclaimer: | <p>Due to the inherent nature of this plasmid, standard methods to replicate additional amounts of DNA in E. coli are highly likely to result in mutations and/or rearrangements. Therefore, OriGene does not guarantee the capability to replicate this plasmid DNA. Additional amounts of DNA can be purchased from OriGene with batch-specific, full-sequence verification at a reduced cost. Please contact our customer care team at custsupport@origene.com or by calling 301.340.3188 option 3 for pricing and delivery.</p> <p>The molecular sequence of this clone aligns with the gene accession number as a point of reference only. However, individual transcript sequences of the same gene can differ through naturally occurring variations (e.g. polymorphisms), each with its own valid existence. This clone is substantially in agreement with the reference, but a complete review of all prevailing variants is recommended prior to use. More info</p> |
| OTI Annotation: | This clone was engineered to express the complete ORF with an expression tag. Expression varies depending on the nature of the gene. |
| Components: | The ORF clone is ion-exchange column purified and shipped in a 2D barcoded Matrix tube containing 10ug of transfection-ready, dried plasmid DNA (reconstitute with 100 ul of water). |
| RefSeq: | NP_000242 |
| RefSeq Size: | 2634 bp |
| RefSeq ORF: | 2805 bp |
| Locus ID: | 4436 |
| Cytogenetics: | 2p21-p16.3 |
| Domains: | MutS_V, MutS_I, MutS_III, MutS_II, MutS_IV |
| Protein Families: | Druggable Genome, Stem cell - Pluripotency |
| Protein Pathways: | Colorectal cancer, Mismatch repair, Pathways in cancer |
| MW: | 96.6 kDa |
| Gene Summary: | This locus is frequently mutated in hereditary nonpolyposis colon cancer (HNPCC). When cloned, it was discovered to be a human homolog of the E. coli mismatch repair gene mutS, consistent with the characteristic alterations in microsatellite sequences (RER+ phenotype) found in HNPCC. Two transcript variants encoding different isoforms have been found for this gene. [provided by RefSeq, Apr 2012] |