

Product datasheet for **RC401468**

MSH6 (NM_000179) Human Mutant ORF Clone

Product data:

Product Type:	Mutant ORF Clones
Product Name:	MSH6 (NM_000179) Human Mutant ORF Clone
Mutation Description:	L1354Q
Affected Codon#:	1354
Affected NT#:	4061
Nucleotide Mutation:	MSH6 Mutant (L1354Q), Myc-DDK-tagged ORF clone of Homo sapiens mutS homolog 6 (E. coli) (MSH6) as transfection-ready DNA
Effect:	Colorel ner
Symbol:	MSH6
Synonyms:	GTBP; GTMBP; HNPCC5; HSAP; MMRCS3; p160
E. coli Selection:	Kanamycin (25 ug/mL)
Mammalian Cell Selection:	Neomycin
Vector:	pCMV6-Entry (PS100001)
Tag:	Myc-DDK
ACCN:	NM_000179
ORF Size:	4080 bp
Restriction Sites:	Sgfl-Mlul
ORF Nucleotide Sequence:	>RC401468 representing NM_000179 Red=Cloning site Blue=ORF Green=Tags(s)

TTTTGTAATACGACTCACTATAGGGCGCCGGGAATTCGTCGACTGGATCCGGTACCGAGGAGATCTGCC
GCC**CGATCGCC**

ATGTGCGGACAGAGCACCTGTACAGCTTCTTCCCAAGTCTCCGGCGCTGAGTGATGCCAACAAGGCCT
CGGCCAGGGCCTCACGCGAAGGCGGCCGTGCCGCCGCTGCCCCGGGGCCTCTCCTTCCCGAGGCGGGGA
TGCGGCCTGGAGCGAGGCTGGGCCTGGGCCAGGCCCTTGGCGCGCTCCGCGTACCGCCCAAGGCGAAG
AACCTCAACGGAGGGCTGCGGAGATCGGTAGCGCCTGCTGCCCCACCAGTTGTGACTTCTACCAGGAG
ATTTGGTTTGGCCAAGATGGAGGGTTACCCTGGTGGCCTTGTCTGGTTTACAACCACCCCTTTGATGG
AACATTATCCGCGAGAAAGGAAATCAGTCCGTGTTTCATGTACAGTTTTTTGATGACAGCCCAACAAGG
GGCTGGGTTAGCAAAAGGCTTTAAAGCCATATACAGGTTCAAATCAAAGGAAGCCAGAAGGGAGGTC



[View online »](#)

ATTTTACAGTGCAAAGCCTGAAATACTGAGAGCAATGCAACGTGCAGATGAAGCCTTAAATAAAGACAA
 GATTAAGAGGCTTGAATTGGCAGTTTGTGATGAGCCCTCAGAGCCAGAAGAGGAAGAAGAGATGGAGGTA
 GGCACAACCTACGTAACAGATAAGAGTGAAGAAGATAATGAAATTGAGAGTGAAGAGGAAGTACAGCCTA
 AGACACAAGGATCTAGGCGAAGTAGCCGCCAAATAAAAAACGAAGGGTCATATCAGATTCTGAGAGTGA
 CATTGGTGGCTCTGATGTGGAATTTAAGCCAGACACTAAGGAGGAAGGAAGCAGTGTGAAATAAGCAGT
 GGAGTGGGGGATAGTGAAGTGAAGGCCTGAACAGCCCTGTCAAAGTTGCTCGAAAGCGGAAGAGAATGG
 TGACTGGAAATGGCTCTCTTAAAAGGAAAAGCTCTAGGAAGGAAACGCCCTCAGCCACCAACAAGCAAC
 TAGCATTTCATCAGAAACCAAGAATACTTTGAGAGCTTTCTCTGCCCTCAAATTTCTGAATCCCAAGCC
 CACGTTAGTGGAGGTGGTGTGACAGTAGTCGCCCTACTGTTTGGTATCATGAACTTTAGAATGGCTTA
 AGGAGGAAAAGAGAAGAGATGAGCACAGGAGGAGCCTGATCACCCGATTTTGTGATCTACACTCTA
 TGTGCCTGAGGATTTCTCAATTCTTGTACTCTGGGATGAGGAAGTGGTGGCAGATTAAGTCTCAGAAC
 TTTGATCTTGTCTGTACAAGTGGGAAAATTTATGAGCTGTACCACATGGATGCTCTTATTGGAG
 TCAGTGAAGTGGGCTGGTATTCATGAAAGGCAACTGGGCCATTCTGGCTTCTGAAATTGCATTTGG
 CCGTTATTCAGATTCCTGGTGCAGAAGGGCTATAAAGTAGCACGAGTGAACAGACTGAGACTCCAGAA
 ATGATGGAGGCACGATGTAGAAAGATGGCACATATATCCAAGTATGATAGAGTGGTGGAGAGGAGATCT
 GTAGGATCATTACCAAGGTACACAGACTTACAGTGTGCTGGAAGGTGATCCCTCTGAGAACTACAGTAA
 GTATCTTCTTAGCCTCAAAGAAAAGAGGAAGATTCTTCTGGCCATACTCGTGCATATGGTGTGTGCTTT
 GTTGATACTTCACTGGGAAAGTTTTTCATAGGTGAGTTTTCAGATGATCGCCATTGTTTCGAGATTTAGGA
 CTCTAGTGGCACACTATCCCCAGTACAAGTTTTATTTGAAAAAGGAAATCTCTCAAAGGAAACTAAAAC
 AATTCTAAAGAGTTCATTGTCTGTCTCTTCCAGGAAGTCTGATACCCGGCTCCAGTTTTGGGATGCA
 TCCAAACTTTGAGAAGTCTCCTTGAGGAAGAATTTTAGGGAAAAGCTAAGTATGGCATTGGGGTGA
 TGTTACCCAGGTGCTTAAAGGATGACTTCCAGTCTGATCCATTGGGTTGACACCAGGAGAGAAAAG
 TGAATGGCCCTCTCTGCTCTAGGTGGTGTGCTCTTCTACCTCAAAAAATGCCTTATTGATCAGGAGCTT
 TTATCAATGGCTAATTTTGAAGAATATATCCCTTGGATTCTGACACAGTCAGCACTACAAGATCTGGTG
 CTATCTTACCAGCCTATCAACGAATGGTGTAGATGCAGTGCATTAACAACCTGGAGATTTTTCT
 GAATGGAACAAATGGTTCTACTGAAGGAACCTACTAGAGAGGGTTGATACTTGCCTACTCCTTTTGGT
 AAGCGCTCCTAAAGCAATGGCTTTGTGCCCACTCTGTAACCATTATGCTATTAATGATCGTCTAGATG
 CCATAGAAGACCTCATGGTTGTGCTGACAAAATCTCCGAAGTTGTAGAGCTTCTAAAGAAGCTTCCAGA
 TCTTGAGAGGCTACTCAGTAAAATTCATAATGTTGGGTCTCCCTGAAGAGTCAAGAACCCAGACAGC
 AGGGCTATAATGTATGAAGAACTACATACAGCAAGAAGAAGATTATTGATTTCTTCTGCTCTGGAAG
 GATTCAAAGTAAATGTGTAATATAGGGATCATGGAAGAAGTGTGCTGATGGTTTTAAGTCTAAAATCCT
 TAAGCAGGTCTCTCTGACAGCAAAAATCCTGAAGTCTGTTTTCTGATTGACTGTAGAATTGAAC
 CGATGGGATACAGCCTTTGACCATGAAAAGGCTCGAAAGACTGGACTTATTACTCCCAAAGCAGGCTTTG
 ACTCTGATTATGACCAAGCTCTTGTGACATAAGAGAAAATGAACAGAGCCTCCTGGAATACCTAGAGAA
 ACAGCGCAACAGAATTGGCTGTAGGACCATAGTCTATTGGGGATTGGTAGGAACCGTTACCAGCTGGAA
 ATTCTGAGAATTTACCAGTCAATTTGCCAGAAGAATACGAGTTGAAATCTACCAAGAAGGGCTGTA
 AACGATACTGGACAAAATTTGAAAAGAAGTTGGCTAATCTCATAAATGCTGAAGAACGGAGGGATGT
 ATCATTGAAGGACTGCATGCGGCGACTGTTCTATAACTTTGATAAAAAATTACAAGGACTGGCAGTCTGCT
 GTAGAGTGTATCGCAGTGTGGATGTTTTACTGTGCTGGCTAACTATAGTCGAGGGGGTGTGGTCTCTA
 TGTGTCGCCAGTAATCTGTTGCCGGAAGATACCCCCCTTCTTAGAGCTTAAAGGATCACGCCATCC
 TTGCATTACGAAGACTTTTTTTGGAGATGATTTTATTCCTAATGACATTCTAATAGGCTGTGAGGAAGG
 GAGCAGGAAAATGGCAAAGCCTATTGTGTGCTTGTACTGGACCAAAATAGGGGGCAAGTCTACGCTTA
 TGAGACAGGCTGGCTTATTAGCTGTAATGGCCAGATGGGTTGTACGTCCTGCTGAAGTGTGACAGGCT
 CACACCAATTGATAGAGTGTACTAGACTTGGTGCCTCAGACAGAATAATGTCAGGTGAAAGTACATTT
 TTTGTTGAATTAAGTGAAGTGCAGCATACTCATGCATGCAACAGCACATTCTCTGGTCTGTGGATG
 AATTAGGAAGAGTACTGCAACATTTGATGGGACGGCAATAGCAATGCAGTTGTTAAAGAACTGTGTA
 GACTATAAAATGTCGTACATTATTTCAACTACTACCATTCTTATGATAGAAGATTATTCTCAAATGTT
 GCTGTGCGCCTAGGACATATGGCATGCATGGTAGAAAATGAATGTGAAGACCCAGCCAGGAGACTATTA
 CGTTCCCTCTATAAATTCATTAAGGGAGCTTGTCTAAAAGCTATGGCTTTAATGCAGCAAGGCTTGTAA
 TCTCCCAGAGGAAGTTATTCAAAGGGACATAGAAAAGCAAGAGAATTTGAGAAGATGAATCAGTCACTA
 CGATTATTTGGGAAGTTTGCCTGGCTAGTGAAGGTCAACTGTAGATGCTGAAGCTGTCCATAAATTGC
 AGACTTTGATTAAGGAATTA

AGCGGACCGACGCGTACGCGCCGCTCGAGCAGAACTCATCTCAGAAGAGGATCTGGCAGCAAATGATATCC
TGGATTACAAGGATGACGACGA TAAGGTTTAA

Protein Sequence:

>RC401468 representing NM_000179
Red=Cloning site Green=Tags(s)

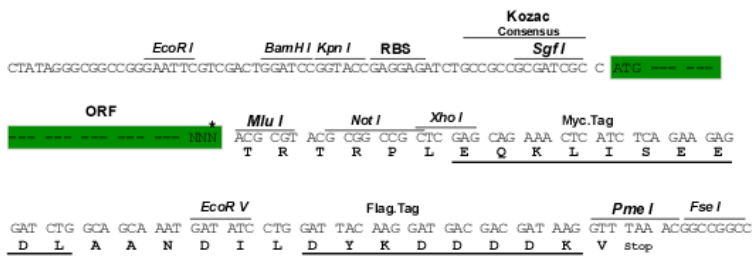
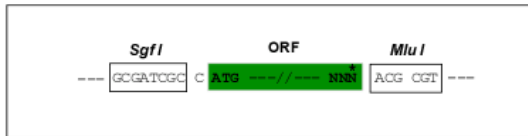
MSRQSTLYSFFPKSPALSDANKASARASREGGAAAAPGASPSPGDDAAWSEAGPGRPLARSASPPKAK
NLNGGLRRSVAPAAPTSCDFSPGDLVWAKMEGYPWWPCLVYNHPFDGTFIREKGKSVRVHVQFFDDSPTR
GWVSKRLLKPYTGSKSKEAQKGGHFYSAPKEILRAMQRADEALNKDKIKRLELAVCDPSEPEEEEEEMEV
GTTYVTDKSEEDNEIESEEEVQPKTQGSRRSSRIKRRVISEDSEDIIGGSDVEFKPDTKEEGSSDEISS
GVGDSESEGLNSPVKVARKRKRMVTGNGLKRRSSRKETPSATKQATSISSETKNTLRAF SAPQNSSEQA
HVSGGGDDSSRPTVWYHETLEWLKEEKRRDEHRRRPDHPDFDASTLYVPEDFLNSCTPGMRKWWQIKSQN
FDLVICYKVGKFYELYHMDALIGVSELGLVFMKGNWAHSGFPEIAFGYSDSLVQKGYKVARVEQTETPE
MMEARCRKMAHISKYDRVVRREICRIITKGTQTYSVLEGDPSENYSKYL LSLKEKEEDSSGHTRAYGVCF
VDTSLGKFFIGQFSDDRHC SRFRTLVAHYPPVQVLFKGNLSKETKTILKSSLSCSLQEGLIPGSQFWD A
SKTLRLLLEEEYFREKLSDGIGVMLPQVLKGMTSESDSIGLTPGEKSELALSALGGCVFYLLKCLIDQEL
LSMANFEEYIPLDSDTVSTTRSGAIFTKAYQRMVLDATLNNLEIFLNGTNGSTEGTL LERVDTCHTPFG
KRL LKQWL CAPLCNHYAINDRLDAIEDLMVVPDKISEVVELLKKLPDLERLLSKIHNVSPLKSNHPDS
RAIMYEETTSKKKIIDFLSALEGFKVMCKIIGIMEEVADGFKSKILKQVISLQTKNPEGRFPDLTVELN
RWDTAFDHEKARKTGLITPKAGFSDYDQALADIRENEQSLLEYLEKQRNRIGCRTIVYWGIGRNRVQLE
IPENFTTRNLPEEYELKSTKKGCKRYWTKTIEKLANLANAEERRDVSLKDCMRRLFYNFDKNYKDWQSA
VECIAVLVLLCLANYSRGGDGPMPRPVILLPEDTPPFLELKGSRHPCITKTFFGDDFIPNDILIGCEEE
EQENGKAYCVLVTGPNMGKSTLMRQAGLLAVMAQMGCYVPAEVCRLTPIDRVFTRLGASDRIMSGESTF
FVELSETASILMHATAHSLVLVDELGRGTATFDGTAIANAVVKELAEIKCRTLFSTHYHSLVEDYSQNV
AVRLGHMACMVENECEDPSQETITFLYKFKGACPKSYGFNAARLANLPEEVIQKGRHKAREFEKMNQSL
RLFREVLASERSTVDAEAVHKLQTLIKEL

SGPTRRRLRLEQKLI SEEDLAANDILDYKDDDDKV

Restriction Sites:
Cloning Scheme:

Sgfi-MluI

Cloning sites used for ORF Shutting:



* The last codon before the Stop codon of the ORF

OTI Disclaimer:	<p>Due to the inherent nature of this plasmid, standard methods to replicate additional amounts of DNA in E. coli are highly likely to result in mutations and/or rearrangements. Therefore, OriGene does not guarantee the capability to replicate this plasmid DNA. Additional amounts of DNA can be purchased from OriGene with batch-specific, full-sequence verification at a reduced cost. Please contact our customer care team at custsupport@origene.com or by calling 301.340.3188 option 3 for pricing and delivery.</p> <p>The molecular sequence of this clone aligns with the gene accession number as a point of reference only. However, individual transcript sequences of the same gene can differ through naturally occurring variations (e.g. polymorphisms), each with its own valid existence. This clone is substantially in agreement with the reference, but a complete review of all prevailing variants is recommended prior to use. More info</p>
OTI Annotation:	<p>This clone was engineered to express the complete ORF with an expression tag. Expression varies depending on the nature of the gene.</p>
Components:	<p>The ORF clone is ion-exchange column purified and shipped in a 2D barcoded Matrix tube containing 10ug of transfection-ready, dried plasmid DNA (reconstitute with 100 ul of water).</p>
RefSeq:	<p>NP_000170</p>
RefSeq Size:	<p>4080 bp</p>
RefSeq ORF:	<p>4083 bp</p>
Locus ID:	<p>2956</p>
Cytogenetics:	<p>2p16.3</p>
Domains:	<p>PWWP, MutS_V, MutS_I, MutS_III, MutS_II, MutS_IV</p>
Protein Families:	<p>Druggable Genome, Stem cell - Pluripotency</p>
Protein Pathways:	<p>Colorectal cancer, Mismatch repair, Pathways in cancer</p>
MW:	<p>149.6 kDa</p>
Gene Summary:	<p>This gene encodes a member of the DNA mismatch repair MutS family. In E. coli, the MutS protein helps in the recognition of mismatched nucleotides prior to their repair. A highly conserved region of approximately 150 aa, called the Walker-A adenine nucleotide binding motif, exists in MutS homologs. The encoded protein heterodimerizes with MSH2 to form a mismatch recognition complex that functions as a bidirectional molecular switch that exchanges ADP and ATP as DNA mismatches are bound and dissociated. Mutations in this gene may be associated with hereditary nonpolyposis colon cancer, colorectal cancer, and endometrial cancer. Transcripts variants encoding different isoforms have been described. [provided by RefSeq, Jul 2013]</p>