

## Product datasheet for **RC401455**

### MSH6 (NM\_000179) Human Mutant ORF Clone

#### Product data:

Product Type:	Mutant ORF Clones
Product Name:	MSH6 (NM_000179) Human Mutant ORF Clone
Mutation Description:	E1119X
Affected Codon#:	1119
Affected NT#:	3355
Nucleotide Mutation:	MSH6 Mutant (E1119X), Myc-DDK-tagged ORF clone of Homo sapiens mutS homolog 6 (E. coli) (MSH6) as transfection-ready DNA
Effect:	Colorectal cancer, non-polyposis
Symbol:	MSH6
Synonyms:	GTBP; GTMBP; HNPCC5; HSAP; MMRC3; p160
E. coli Selection:	Kanamycin (25 ug/mL)
Mammalian Cell Selection:	Neomycin
Vector:	pCMV6-Entry (PS100001)
Tag:	Myc-DDK
ACCN:	NM_000179
ORF Size:	3354 bp
Restriction Sites:	SgfI-MluI
ORF Nucleotide Sequence:	>RC401455 representing NM_000179 Red=Cloning site Blue=ORF Green=Tags(s)

TTTTGTAATACGACTCACTATAGGGCGCCGGGAATTCGTCGACTGGATCCGGTACCGAGGAGATCTGCC  
GCC**CGATCGCC**

ATGTGCGGACAGAGCACCTGTACAGCTTCTTCCCAAGTCTCCGGCGCTGAGTGATGCCAACAAGGCCT  
CGGCCAGGGCCTCACGCGAAGGCGGCCGTGCCGCCGCTGCCCCGGGGCCTCTCCTTCCCGAGGCGGGGA  
TGCGGCCTGGAGCGAGGCTGGGCCTGGGCCAGGCCCTTGGCGCGCTCCGCGTACCGCCCAAGGCGAAG  
AACCTCAACGGAGGGCTGCGGAGATCGGTAGCGCCTGCTGCCCCACCAGTTGTGACTTCTACCAGGAG  
ATTTGGTTTGGCCAAGATGGAGGGTTACCCTGGTGGCCTTGTCTGGTTTACAACCACCCCTTTGATGG  
AACATTATCCGCGAGAAAGGAAATCAGTCCGTGTTTCATGTACAGTTTTTTGATGACAGCCCAACAAGG  
GGCTGGTTAGCAAAGGCTTTAAAGCCATATACAGGTTCAAATCAAAGGAAGCCAGAAGGGAGGTC



[View online »](#)

ATTTTTACAGTGCAAAGCCTGAAATACTGAGAGCAATGCAACGTGCAGATGAAGCCTTAAATAAAGACAA  
GATTAAGAGGCTTGAATTGGCAGTTTGTGATGAGCCCTCAGAGCCAGAAGAGGAAGAAGAGATGGAGGTA  
GGCACAACCTACGTAACAGATAAAGAGTGAAGAAGATAATGAAATTGAGAGTGAAGAGGAAGTACAGCCTA  
AGACACAAGGATCTAGGCGAAGTAGCCGCCAAATAAAAAACGAAGGGTCATATCAGATTCTGAGAGTGA  
CATTGGTGGCTCTGATGTGGAATTTAAGCCAGACACTAAGGAGGAAGGAAGCAGTGTGAAATAAGCAGT  
GGAGTGGGGGATAGTGAAGTGAAGCCCTGAACAGCCCTGTCAAAGTTGCTCGAAAGCGGAAGAGAATGG  
TGACTGGAAATGGCTCTCTTAAAAGGAAAAGCTCTAGGAAGGAAACGCCCTCAGCCACCAACAAGCAAC  
TAGCATTTTCATCAGAAACCAAGAATACTTTGAGAGCTTTCTCTGCCCTCAAATACTGAAATCCCAAGCC  
CACGTTAGTGGAGGTGGTGTGACAGTAGTCGCCCTACTGTTTGGTATCATGAAACTTTAGAATGGCTTA  
AGGAGGAAAAGAGAAGAGATGAGCACAGGAGGAGGCTGATCACCCGATTTTGTGATCTACACTCTA  
TGTGCCTGAGGATTTCTCAATTCTTGTACTCTGGGATGAGGAAGTGGTGGCAGATTAAGTCTCAGAAC  
TTTGTCTTGTGATCTGTTACAAGGTGGGAAAATTTATGAGCTGTACCACATGGATGCTCTTATTGGAG  
TCAGTGAAGTGGGCTGGTATTCATGAAAGGCAACTGGGCCATTCTGGCTTCTGAAATTGCATTTGG  
CCGTTATTCAGATTCCTGGTGCAGAAGGGCTATAAAGTAGCACGAGTGAACAGACTGAGACTCCAGAA  
ATGATGGAGGCACGATGTAGAAAGATGGCACATATATCCAAGTATGATAGAGTGGTGGAGGGGAGATCT  
GTAGGATCATTACCAAGGTACACAGACTTACAGTGTGCTGGAAGGTGATCCCTCTGAGAACTACAGTAA  
GTATCTTCTTAGCCTCAAAGAAAAGAGGAAGATTCTTCTGGCCATACTCGTGCATATGGTGTGTGCTTT  
GTTGATACTTCACTGGGAAAGTTTTTCATAGGTGAGTTTTCAGATGATCGCCATTGTTTCGAGATTTAGGA  
CTCTAGTGGCACACTATCCCCAGTACAAGTTTTATTTGAAAAAGGAAATCTCTCAAAGGAAACTAAAAC  
AATTCTAAAGAGTTCATTGTCTGTCTCTTTCAGGAAGTCTGATACCCGGCTCCAGTTTTGGGATGCA  
TCCAAAACCTTTGAGAAGTCTCCTTGAGGAAGAATTTTAGGGAAAAGCTAAGTATGGCATTGGGGTGA  
TGTTACCCAGGTGCTTAAAGGTATGACTTCAGAGTCTGATTCATTGGGTTGACACCAGGAGAGAAAAG  
TGAATGGCCCTCTGCTCTAGGTGGTTGTCTTCTACCTCAAATAATGCCTTATTGATCAGGAGCTT  
TTATCAATGGCTAATTTTGAAGAATATATCCCTTGGATTCTGACACAGTCAGCACTACAAGATCTGGTG  
CTATCTTACCAGCCTATCAACGAATGGTGTAGATGCAGTGCATTAACAACCTGGAGATTTTTCT  
GAATGGAACAAATGGTTCTACTGAAGGAACCTACTAGAGAGGGTTGATACTTGCCTACTCCTTTTGGT  
AAGCGCTCCTAAAGCAATGGCTTTGTGCCCACTCTGTAACCATTATGCTATTAATGATCGTCTAGATG  
CCATAGAAGACCTCATGGTTGTGCTGACAAAATCTCCGAAGTTGTAGAGCTTCTAAAGAAGCTTCCAGA  
TCTTGAGAGGCTACTCAGTAAAATTCATAATGTTGGGTCTCCCTGAAGAGTCAAGAACCCAGACAGC  
AGGGCTATAATGTATGAAGAACTACATACAGCAAGAAGAAGATTATTGATTTTCTTCTGCTCTGGAAG  
GATTCAAAGTAATGTGTAATAATAGGGATCATGGAAGAAGTGTGATGGTTTTAAGTCTAAAATCCT  
TAAGCAGGTATCTCTGTCAGACAAAATCCTGAAGGTCTTTTCTGATTTGACTGTAGAATTGAAC  
CGATGGGATACAGCCTTTGACCATGAAAAGGCTCGAAAGACTGGACTTATTACTCCCAAAGCAGGCTTTG  
ACTCTGATTATGACCAAGCTCTTGTGACATAAGAGAAAATGAACAGAGCCTCCTGGAATACCTAGAGAA  
ACAGCGCAACAGAATTGGCTGTAGGACCATAGTCTATTGGGGATTGGTAGGAACCGTTACCAGCTGGAA  
ATTCTGAGAATTTACCAGTCAATTTGCCAGAAGAATACGAGTTGAAATCTACCAAGAAGGGCTGTA  
AACGATACTGGACAAAATTTGAAAAGAAGTTGGCTAATCTCATAAATGCTGAAGAACGGAGGGATGT  
ATCATTGAAGGACTGCATGCGGCGACTGTTCTAATACTTTGATAAAAATACAAGGACTGGCAGTCTGCT  
GTAGAGTGTATCGCAGTGTGGATGTTTTACTGTGCTGCTAACTATAGTCGAGGGGGTGTGGTCTTA  
TGTGTGCCCAAGTAAATCTGTTGCCGGAAGATACCCCCCTTCTTAGAGCTTAAAGGATCACGCCATCC  
TTGATTACGAAGACTTTTTTTGGAGATGATTTTATTCTAATGACATTCTAATAGGCTGTGAG

AGCGGACCGACGCGTACGCGGCCGCTCGAGCAGAACTCATCTCAGAAGAGGATCTGGCAGCAAATGATATCC  
TGGATTACAAGGATGACGACGA TAAGTTTAA

**Protein Sequence:** >RC401455 representing NM\_000179  
 Red=Cloning site Green=Tags(s)

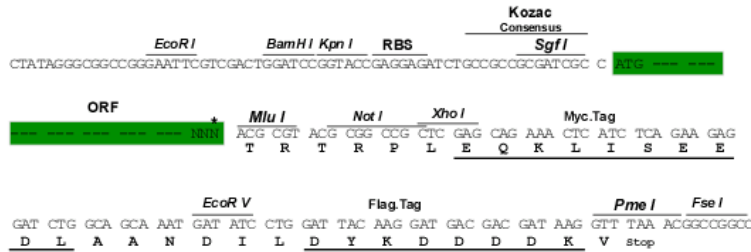
MSRQSTLYSFFPKSPALSDANKASARASREGGRAAAAPGASPSGGDAAWSEAGGPRPLARSASPPKAK  
 NLNGGLRRSVAPAAPTSCDFSPGDLVWAKMEGYPPWVCLVYNHPFDGTFIREKGSVRVHVQFFDDSPTR  
 GWVSKRLLKPYTGSKSKEAQKGGHFYSAKPEILRAMQRADEALNKDKIKRLELAVCDEPSEPEEEEEEMEV  
 GTTYVTDKSEEDNEIESEEEVQPKTQGSRRSRQIKRRRVIDSESDIGGSDVEFKPDTKEEGSSDEISS  
 GVGDSSEGLNSPVKVARRRKRMVTGNSLKRKSSRKETPSATKQATSISSEKNTLRAFAPQNSESA  
 HVSGGGDDSSRPTVWYHETLEWLKKEEKRRDEHRRRPDHPDFDASTLYVPEDFLNSCTPGMRKWWQIKSQN  
 FDLVICYKVGKFYELYHMDALIGVSELGLVFMKGNWAHSGFPEIAFGRYSDSLVQKGYKVARVEQTETPE  
 MMEARCRKMAHISKYDRVVRREICRIITKGTQTYSVLEGDPSENYSKYLKSLKEKEEDSSGHTRAYGVCF  
 VDTSLGKFFIGQFSDDRHCSTRFTLVAHYPPVQVLFKGNLSKETKTKILKSSLSLQGLIPGSQFWD  
 SKTLRLLLEEEYFREKLSDGIGVMLPQVLKGMTSESDSISGLTPGEKSELALSALGGCVFYLLKCLIDQEL  
 LSMANFEEYIPLDSDTVSTRSGAIFTKAYQRMVLDVATLNNLEIFLNGTNGSTEGTLLERVDTCHTPFG  
 KRLLKQWLCAPLCNHYAINDRLDAIEDLMVVPDKISEVVELLKKLPDLERLLSKIHNVGSPLKSQNHPS  
 RAIMYEETTYSKKKIIDFLSALEGFKVMCKIIGIMEEVADGFKSKILKQVISLQTKNPEGRFPDLTVELN  
 RWDATFDHEKARKTGLITPKAGFSDSDYDQALADIRENEQSLLEYLEKQRNRIGCRTIVYWGIGRNRVQLE  
 IPENFTTRNLPEEYELKSTKKGCKRYWTKTIEKLANLINAERRDVSLKDCMRRLFYNFDKNYKDWQSA  
 VECIAVLVLLCLANYSRGGDGMCRPVILLPEDTPPFLELKSRHPCITKTFGGDFIPNDILIGCE

SGPTRRRLEQKLISEEDLAANDILDYKDDDDKV

**Restriction Sites:** SgfI-MluI

**Cloning Scheme:**

Cloning sites used for ORF Shutting:



\* The last codon before the Stop codon of the ORF

<b>OTI Disclaimer:</b>	<p>Due to the inherent nature of this plasmid, standard methods to replicate additional amounts of DNA in E. coli are highly likely to result in mutations and/or rearrangements. Therefore, OriGene does not guarantee the capability to replicate this plasmid DNA. Additional amounts of DNA can be purchased from OriGene with batch-specific, full-sequence verification at a reduced cost. Please contact our customer care team at <a href="mailto:custsupport@origene.com">custsupport@origene.com</a> or by calling 301.340.3188 option 3 for pricing and delivery.</p> <p>The molecular sequence of this clone aligns with the gene accession number as a point of reference only. However, individual transcript sequences of the same gene can differ through naturally occurring variations (e.g. polymorphisms), each with its own valid existence. This clone is substantially in agreement with the reference, but a complete review of all prevailing variants is recommended prior to use. <a href="#">More info</a></p>
<b>OTI Annotation:</b>	This clone was engineered to express the complete ORF with an expression tag. Expression varies depending on the nature of the gene.
<b>Components:</b>	The ORF clone is ion-exchange column purified and shipped in a 2D barcoded Matrix tube containing 10ug of transfection-ready, dried plasmid DNA (reconstitute with 100 ul of water).
<b>RefSeq:</b>	<a href="#">NP_000170</a>
<b>RefSeq Size:</b>	3354 bp
<b>RefSeq ORF:</b>	4083 bp
<b>Locus ID:</b>	2956
<b>Cytogenetics:</b>	2p16.3
<b>Domains:</b>	PWWP, MutS_V, MutS_I, MutS_III, MutS_II, MutS_IV
<b>Protein Families:</b>	Druggable Genome, Stem cell - Pluripotency
<b>Protein Pathways:</b>	Colorectal cancer, Mismatch repair, Pathways in cancer
<b>MW:</b>	123 kDa
<b>Gene Summary:</b>	<p>This gene encodes a member of the DNA mismatch repair MutS family. In E. coli, the MutS protein helps in the recognition of mismatched nucleotides prior to their repair. A highly conserved region of approximately 150 aa, called the Walker-A adenine nucleotide binding motif, exists in MutS homologs. The encoded protein heterodimerizes with MSH2 to form a mismatch recognition complex that functions as a bidirectional molecular switch that exchanges ADP and ATP as DNA mismatches are bound and dissociated. Mutations in this gene may be associated with hereditary nonpolyposis colon cancer, colorectal cancer, and endometrial cancer. Transcripts variants encoding different isoforms have been described. [provided by RefSeq, Jul 2013]</p>