

Product datasheet for **RC401446**

MSH6 (NM_000179) Human Mutant ORF Clone

Product data:

Product Type:	Mutant ORF Clones
Product Name:	MSH6 (NM_000179) Human Mutant ORF Clone
Mutation Description:	W1007X
Affected Codon#:	1007
Affected NT#:	3020
Nucleotide Mutation:	MSH6 Mutant (W1007X), Myc-DDK-tagged ORF clone of Homo sapiens mutS homolog 6 (E. coli) (MSH6) as transfection-ready DNA
Effect:	Neurofibromosis, type 1
Symbol:	MSH6
Synonyms:	GTBP; GTMBP; HNPCC5; HSAP; MMRC3; p160
E. coli Selection:	Kanamycin (25 ug/mL)
Mammalian Cell Selection:	Neomycin
Vector:	pCMV6-Entry (PS100001)
Tag:	Myc-DDK
ACCN:	NM_000179
ORF Size:	3018 bp
Restriction Sites:	SgfI-MluI
ORF Nucleotide Sequence:	>RC401446 representing NM_000179 Red=Cloning site Blue=ORF Green=Tags(s)

TTTTGTAATACGACTCACTATAGGGCGCCGGGAATTCGTCGACTGGATCCGGTACCGAGGAGATCTGCC
GCC**GCGATCGCC**

ATGTGCGGACAGAGCACCTGTACAGCTTCTTCCCAAGTCTCCGGCGCTGAGTGATGCCAACAAGGCCT
CGGCCAGGGCCTCACGCGAAGGCGGCCGTGCCGCCGCTGCCCCGGGGCCTCTCCTTCCCAAGCGGGGA
TGCGGCCTGGAGCGAGGCTGGGCCTGGGCCAGGCCCTTGGCGCGCTCCGCGTCACCGCCCAAGCGAAG
AACCTCAACGGAGGGCTGCGGAGATCGGTAGCGCCTGCTGCCCCACCAGTTGTGACTTCTCACCAGGAG
ATTTGGTTTGGCCAAGATGGAGGGTTACCCTGGTGGCCTTGTCTGGTTTACAACCACCCCTTTGATGG
AACATTATCCGCGAGAAAGGAAATCAGTCCGTGTTTCATGTACAGTTTTTTGATGACAGCCCAACAAGG
GGCTGGTTAGCAAAGGCTTTAAAGCCATATACAGGTTCAAATCAAAGGAAGCCAGAAGGGAGGTC



[View online »](#)

ATTTTTACAGTGCAAAGCCTGAAATACTGAGAGCAATGCAACGTGCAGATGAAGCCTTAAATAAAGACAA
GATTAAGAGGCTTGAATTGGCAGTTTGTGATGAGCCCTCAGAGCCAGAAGAGGAAGAAGAGATGGAGGTA
GGCACAACCTACGTAACAGATAAAGAGTGAAGAAGATAATGAAATTGAGAGTGAAGAGGAAGTACAGCCTA
AGACACAAGGATCTAGGCGAAGTAGCCGCCAAATAAAAAACGAAGGGTCATATCAGATTCTGAGAGTGA
CATTGGTGGCTCTGATGTGGAATTTAAGCCAGACACTAAGGAGGAAGGAAGCAGTGTGAAATAAGCAGT
GGAGTGGGGGATAGTGAAGTGAAGGCCTGAACAGCCCTGTCAAAGTTGCTCGAAAGCGGAAGAGAATGG
TGACTGGAAATGGCTCTCTTAAAAGGAAAAGCTTAGGAAGGAAACGCCCTCAGCCACCAACAAGCAAC
TAGCATTTTCATCAGAAACCAAGAATACTTTGAGAGCTTTCTCTGCCCTCAAATTTCTGAATCCCAAGCC
CACGTTAGTGGAGGTGGTGTGATGACAGTGTGCGCCCTACTGTTTGGTATCATGAACTTTAGAATGGCTTA
AGGAGGAAAAGAGAAGAGATGAGCACAGGAGGAGGCTGATCACCCGATTTTGTGATCTACACTCTA
TGTGCCTGAGGATTTCTCAATTCTTGTACTCTGGGATGAGGAAGTGGTGGCAGATTAAGTCTCAGAAC
TTTGTCTTGTCTGTTACAAGGTGGGAAAATTTATGAGCTGTACCACATGGATGCTCTTATTGGAG
TCAGTGAAGTGGGCTGGTATTCATGAAAGGCAACTGGGCCATTCTGGCTTTCCTGAAATTGCATTTGG
CCGTTATTCAGATTCCTGGTGCAGAAGGGCTATAAAGTAGCACGAGTGAACAGACTGAGACTCCAGAA
ATGATGGAGGCACGATGTAGAAAGATGGCACATATATCCAAGTATGATAGAGTGGTGGAGAGGGAGATCT
GTAGGATCATTACCAAGGTACACAGACTTACAGTGTGCTGGAAGGTGATCCCTCTGAGAACTACAGTAA
GTATCTTCTTAGCCTCAAAGAAAAGAGGAAGATTCTTCTGGCCATACTCGTGCATATGGTGTGTGCTTT
GTTGATACTTCACTGGGAAAGTTTTTCATAGGTGAGTTTTTGTGATGATCGCCATTGTTTCGAGATTTAGGA
CTCTAGTGGCACACTATCCCCAGTACAAGTTTTATTTGAAAAAGGAAATCTCTCAAAGGAACTAAAAC
AATTCTAAAGAGTTCATTGTCTGTCTCTTCCAGGAAGTCTGATACCCGGCTCCAGTTTTGGGATGCA
TCCAAAACCTTTGAGAAGTCTCCTTGAGGAAGAATTTTAGGGAAAAGCTAAGTATGGCATTGGGGTGA
TGTTACCCAGGTGCTTAAAGGTATGACTTCAGAGTCTGATCCATTGGGTTGACACCAGGAGAGAAAAG
TGAATGGCCCTCTCTGCTCTAGGTGGTTGTGCTTCTACCTCAAAAAATGCCTTATTGATCAGGAGCTT
TTATCAATGGCTAATTTTGAAGAATATATCCCTTGGATTCTGACACAGTCAGCACTACAAGATCTGGTG
CTATCTTACCAGCCTATCAACGAATGGTGTAGATGCAGTGCATTAACAACCTGGAGATTTTTCT
GAATGGAACAAATGGTTCTACTGAAGGAACCTACTAGAGAGGGTTGATACTTGCCTACTCCTTTTGGT
AAGCGGCTCCTAAAGCAATGGCTTTGTGCCCACTCTGTAACCATTATGCTATTAATGATCGTCTAGATG
CCATAGAAGACCTCATGGTTGTGCTGACAAAATCTCCGAAGTTGTAGAGCTTCTAAAGAAGCTTCCAGA
TCTTGAGAGGCTACTCAGTAAAATTCATAATGTTGGGTCTCCCTGAAGAGTCAGAACCACCCAGACAGC
AGGGCTATAATGTATGAAGAACTACATACAGCAAGAAGAAGATTATTGATTTTCTTCTGCTCTGGAAG
GATTCAAAGTAATGTGTAATATAGGGATCATGGAAGAAGTTGCTGATGGTTTTAAGTCTAAAATCCT
TAAGCAGGTCTCTCTGACAGCAAAAATCCTGAAGGTCGTTTTCTGATTTGACTGTAGAATTGAAC
CGATGGGATACAGCCTTTGACCATGAAAAGGCTCGAAAGACTGGACTTATTACTCCCAAAGCAGGCTTTG
ACTCTGATTATGACCAAGCTTGTGCTGACATAAGAGAAAATGAACAGAGCCTCCTGGAATACCTAGAGAA
ACAGCGCAACAGAATTGGCTGTAGGACCATAGTCTATTGGGGATTGGTGAAGAACCGTTACCAGCTGGAA
ATTCTGAGAATTTACCACCTCGCAATTTGCCAGAAGAATACGAGTTGAAATCTACCAAGAAGGGCTGTA
AACGATAC

AGCGGACCGACGCGTACGCGGCCGCTCGAGCAGAACTCATCTCAGAAGAGGATCTGGCAGCAAATGATATCC
TGGATTACAAGGATGACGACGA TAAGGTTTAA

Protein Sequence: >RC401446 representing NM_000179
 Red=Cloning site Green=Tags(s)

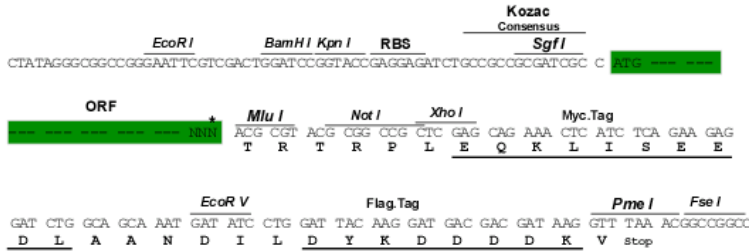
MSRQSTLYSFFPKSPALSDANKASARASREGGRAAAAAPGASPSGGDAAWSEAGPGRPLARSASPPKAK
 NLNGGLRRSVAPAAPTSCDFSPGDLVWAKMEGYPWWPCLVYNHPFDGTFIREK GKSVRVHVQFFDDSPTR
 GWYSKRLLKPYTGSKSKEAQKGGHFYSAPKEILRAMQRADEALNKDKIKRELAVCDEPSEPEEEEEEMEV
 GTTYVTDKSEEDNEIESEEEVQPKTQGSRRSRQIKRRRVIDSESDIGGSDVEFKPDTKEEGSSDEISS
 GVG DSEGLNSPVKVARKRKMVTGNSGLKRRKSSRKETPSATKQATSISSETKNLRAF SAPQNSEQA
 HVSGGGDDSSRPTVWYHETLEWLKEEKRRDEHRRRPDHPDFDASTLYVPEDFLNSCTPGMRKWWQIKSQN
 FDLVICYKVGKFYELYHMDALIGVSELGLVFMKGNWAHSGFPEIAFGRYSDSLVQKGYKVARVEQTETPE
 MMEARCRKMAHISKYDRVVRREICRIITKGTQTYSVLEGDPSENYSKYL LSLKEKEEDSSGHTRAYGVCF
 VDTSLGKFFIGQFSDDRHC SRFRTLVAHYPPVQVLFEKGNLSKETKTILKSSLSCLQEGLIPGSQFWD A
 SKTLRTLLEEEYFREKLSDGIGVMLPQVLKGMTSESDSIGLTPGEKSELALSALGGCVFY LKCLIDQEL
 LSMANFEEYIPLDSDTVSTRSGAIFTKAYQRMVLDATLNNLEIFLNGTNGSTEGTL LERVDTCHTPFG
 KRLLKQWLCAPLCNHYAINDRLDAIEDLMVVPDKISEVVELLKKLPDLERLLSKIHNVGSP LKSQNHPS
 RAIMYEETTSYKKKIIDFLSALEGFKVMCKIIGIMEEVADGFKSKILKQVISLQTKNPEGRFPDLTVELN
 RWDTAFDHEKARKTGLITPKAGFSDSDYQALADIRENEQSLLEYLEKQRNRI GCRTIVYWGIGRNR YQLE
 IPENFTTRNLPEEYELKSTKKGCKRY

SGP TRTRRLEQKLI SEEDLAANDILDYKDDDDKV

Restriction Sites:
Cloning Scheme:

SgfI-MluI

Cloning sites used for ORF Shutting:



* The last codon before the Stop codon of the ORF

OTI Disclaimer:	Due to the inherent nature of this plasmid, standard methods to replicate additional amounts of DNA in E. coli are highly likely to result in mutations and/or rearrangements. Therefore, OriGene does not guarantee the capability to replicate this plasmid DNA. Additional amounts of DNA can be purchased from OriGene with batch-specific, full-sequence verification at a reduced cost. Please contact our customer care team at custsupport@origene.com or by calling 301.340.3188 option 3 for pricing and delivery.
	The molecular sequence of this clone aligns with the gene accession number as a point of reference only. However, individual transcript sequences of the same gene can differ through naturally occurring variations (e.g. polymorphisms), each with its own valid existence. This clone is substantially in agreement with the reference, but a complete review of all prevailing variants is recommended prior to use. More info
OTI Annotation:	This clone was engineered to express the complete ORF with an expression tag. Expression varies depending on the nature of the gene.
Components:	The ORF clone is ion-exchange column purified and shipped in a 2D barcoded Matrix tube containing 10ug of transfection-ready, dried plasmid DNA (reconstitute with 100 ul of water).
RefSeq:	NP_000170
RefSeq Size:	3018 bp
RefSeq ORF:	4083 bp
Locus ID:	2956
Cytogenetics:	2p16.3
Domains:	PWWP, MutS_V, MutS_I, MutS_III, MutS_II, MutS_IV
Protein Families:	Druggable Genome, Stem cell - Pluripotency
Protein Pathways:	Colorectal cancer, Mismatch repair, Pathways in cancer
MW:	110.7 kDa
Gene Summary:	This gene encodes a member of the DNA mismatch repair MutS family. In E. coli, the MutS protein helps in the recognition of mismatched nucleotides prior to their repair. A highly conserved region of approximately 150 aa, called the Walker-A adenine nucleotide binding motif, exists in MutS homologs. The encoded protein heterodimerizes with MSH2 to form a mismatch recognition complex that functions as a bidirectional molecular switch that exchanges ADP and ATP as DNA mismatches are bound and dissociated. Mutations in this gene may be associated with hereditary nonpolyposis colon cancer, colorectal cancer, and endometrial cancer. Transcripts variants encoding different isoforms have been described. [provided by RefSeq, Jul 2013]