

Product datasheet for **RC401437**

MSH6 (NM_000179) Human Mutant ORF Clone

Product data:

Product Type:	Mutant ORF Clones
Product Name:	MSH6 (NM_000179) Human Mutant ORF Clone
Mutation Description:	R901H
Affected Codon#:	901
Affected NT#:	2702
Nucleotide Mutation:	MSH6 Mutant (R901H), Myc-DDK-tagged ORF clone of Homo sapiens mutS homolog 6 (E. coli) (MSH6) as transfection-ready DNA
Effect:	Colorel / endomeril ner
Symbol:	MSH6
Synonyms:	GTBP; GTMBP; HNPCC5; HSAP; MMRC3; p160
E. coli Selection:	Kanamycin (25 ug/mL)
Mammalian Cell Selection:	Neomycin
Vector:	pCMV6-Entry (PS100001)
Tag:	Myc-DDK
ACCN:	NM_000179
ORF Size:	4080 bp
Restriction Sites:	Sgfl-Mlul
ORF Nucleotide Sequence:	>RC401437 representing NM_000179 Red=Cloning site Blue=ORF Green=Tags(s)

TTTTGTAATACGACTCACTATAGGGCGCCGGGAATTCGTCGACTGGATCCGGTACCGAGGAGATCTGCC
GCC**GCGATCGCC**

ATGTGCGGACAGAGCACCTGTACAGCTTCTTCCCAAGTCTCCGGCGCTGAGTGATGCCAACAAGGCCT
CGGCCAGGGCCTCACGCGAAGGCGGCCGTGCCGCCGCTGCCCGGGGCCTCTCCTTCCCGAGGCGGGGA
TGCGGCCTGGAGCGAGGCTGGGCCTGGGCCAGGCCCTTGGCGCGCTCCGCGTACCGCCCAAGGCGAAG
AACCTCAACGGAGGGCTGCGGAGATCGGTAGCGCCTGCTGCCCCACCAGTTGTGACTTCTACCAGGAG
ATTTGGTTTGGCCAAGATGGAGGGTTACCCCTGGTGGCCTTGTCTGGTTTACAACCACCCCTTTGATGG
AACATTATCCGCGAGAAAGGAAATCAGTCCGTGTTTCATGTACAGTTTTTTGATGACAGCCCAACAAGG
GGCTGGTTAGCAAAGGCTTTAAAGCCATATACAGGTTCAAATCAAAGGAAGCCAGAAAGGGAGGTC



[View online »](#)

ATTTTACAGTGCAAAGCCTGAAATACTGAGAGCAATGCAACGTGCAGATGAAGCCTTAAATAAAGACAA
 GATTAAGAGGCTTGAATTGGCAGTTTGTGATGAGCCCTCAGAGCCAGAAGAGGAAGAAGAGATGGAGGTA
 GGCACAACCTACGTAACAGATAAAGAGTGAAGAAGATAATGAAATTGAGAGTGAAGAGGAAGTACAGCCTA
 AGACACAAGGATCTAGGCGAAGTAGCCGCCAAATAAAAAACGAAGGGTCATATCAGATTCTGAGAGTGA
 CATTGGTGGCTCTGATGTGGAATTTAAGCCAGACACTAAGGAGGAAGGAAGCAGTGTGAAATAAGCAGT
 GGAGTGGGGGATAGTGAAGTGAAGGCCTGAACAGCCCTGTCAAAGTTGCTCGAAAGCGGAAGAGAATGG
 TGACTGGAAATGGCTCTCTTAAAAGGAAAAGCTCTAGGAAGGAAACGCCCTCAGCCACCAACAAGCAAC
 TAGCATTTCATCAGAAACCAAGAATACTTTGAGAGCTTTCTCTGCCCTCAAATTTCTGAATCCCAAGCC
 CACGTTAGTGGAGGTGGTGTGACAGTAGTCGCCCTACTGTTTGGTATCATGAACTTTAGAATGGCTTA
 AGGAGGAAAAGAGAAGAGATGAGCACAGGAGGAGGCTGATCACCCGATTTTGTGATCTACACTCTA
 TGTGCCTGAGGATTTCTCAATCTTGTACTCTGGGATGAGGAAGTGGTGGCAGATTAAGTCTCAGAAC
 TTTGATCTTGTATCTGTTACAAGTGGGAAAATTTATGAGCTGTACCACATGGATGCTCTATTGGAG
 TCAGTGAAGTGGGCTGGTATTCATGAAAGGCAACTGGGCCATTCTGGCTTCTGAAATTCATTGG
 CCGTTATTCAGATTCCTGGTGCAGAAGGGCTATAAAGTAGCACGAGTGAACAGACTGAGACTCCAGAA
 ATGATGGAGGCACGATGTAGAAAGATGGCACATATATCCAAGTATGATAGAGTGGTGGAGGGGAGATCT
 GTAGGATCATTACCAAGGTACACAGACTTACAGTGTGCTGGAAGGTGATCCCTCTGAGAACTACAGTAA
 GTATCTTCTTAGCCTCAAAGAAAAGAGGAAGATTCTTCTGGCCATACTCGTGCATATGGTGTGTGCTTT
 GTTGATACTTCACTGGGAAAGTTTTTCATAGGTCAGTTTTCAGATGATCGCCATTGTTTCGAGATTAGGA
 CTCTAGTGGCACACTATCCCCAGTACAAGTTTTATTTGAAAAAGGAAATCTCTCAAAGGAAACTAAAAC
 AATTCTAAAGAGTTCATTGTCTGTCTCTTCCAGGAAGTCTGATACCCGGCTCCAGTTTTGGGATGCA
 TCCAAAACCTTTGAGAAGTCTCCTTGAGGAAGAATTTTAGGGAAAAGCTAAGTATGGCATTGGGGTGA
 TGTTACCCAGGTGCTTAAAGGATGACTTCCAGTCTGATCCATTGGGTTGACACCAGGAGAGAAAAG
 TGAATTTGGCCCTCTCTGCTCTAGGTGGTGTGCTCTTCTACCTCAAAAAATGCCTTATTGATCAGGACTT
 TTATCAATGGCTAATTTTGAAGAATATATTCCTTGGATTCTGACACAGTCAGCACTACAAGATCTGGTG
 CTATCTTACCAGCAAGCTATCAACGAATGGTGTAGATGCAGTGCATTAACAACCTGGAGATTTTTCT
 GAATGGAACAAATGGTTCTACTGAAGGAACCTACTAGAGAGGGTTGATACTTGCCTACTCCTTTTGGT
 AAGCGCTCCTAAAGCAATGGCTTTGTGCCCACTCTGTAAACCATTATGCTATTAATGATCGTCTAGATG
 CCATAGAAGACCTCATGGTTGTGCTGACAAAATCTCCGAAGTTGTAGAGCTTCTAAAGAAGCTTCCAGA
 TCTTGAGAGGCTACTCAGTAAAATTCATAATGTTGGGTCTCCCTGAAGAGTCAAGAACCCAGACAGC
 AGGGCTATAATGTATGAAGAACTACATACAGCAAGAAGAAGATTATTGATTTTCTTCTGCTCTGGAAG
 GATTCAAAGTAAATGTGTAATATAGGGATCATGGAAGAAGTGTGCTGATGGTTTTAAGTCTAAAATCCT
 TAAGCAGGTCTCTCTGACAGCAAAAATCCTGAAGTCAATTTCTGATTGACTGTAGAATTGAAC
 CGATGGGATACAGCCTTTGACCATGAAAAGGCTCGAAAGACTGGACTTATTACTCCCAAAGCAGGCTTTG
 ACTCTGATTATGACCAAGCTCTTGTGACATAAGAGAAAATGAACAGAGCCTCCTGGAATACCTAGAGAA
 ACAGCGCAACAGAATTGGCTGTAGGACCATAGTCTATTGGGGATTGGTAGGAACCGTTACCAGCTGGAA
 ATTCTGAGAATTTACCACCTCGCAATTTGCCAGAAGAATACGAGTTGAAATCTACCAAGAAGGGCTGTA
 AACGATACTGGACAAAACCTATTGAAAAGAAGTTGGCTAATCTCATAAATGCTGAAGAACGGAGGGATGT
 ATCATTGAAGGACTGCATGCGGCGACTGTTCTATAACTTTGATAAAAAATTACAAGGACTGGCAGTCTGCT
 GTAGAGTGTATCGCAGTGTGGATGTTTTACTGTGCTGGCTAACTATAGTCGAGGGGTGATGGTCTTA
 TGTGTCGCCAGTAATCTGTTGCCGGAAGATACCCCCCTTCTTAGAGCTTAAAGGATCACGCCATCC
 TTGCATTACGAAGACTTTTTTTGGAGATGATTTTATTCCTAATGACATTCTAATAGGCTGTGAGGAAGG
 GAGCAGGAAAATGGCAAAGCCTATTGTGTGCTTGTACTGGACCAAAATAGGGGGCAAGTCTACGCTTA
 TGAGACAGGCTGGCTTATTAGCTGTAATGGCCAGATGGGTTGTTACGTCCTGCTGAAGTGTGACAGGCT
 CACACCAATTGATAGAGTGTACTAGACTTGGTGCCTCAGACAGAATAATGTCAGGTGAAAGTACATTT
 TTTGTTGAATTAAGTGAAGTGCAGCATACTCATGCATGCAACAGCACATTCTCTGGTCTTGTGGATG
 AATTAGGAAGAGTACTGCAACATTTGATGGGACGGCAATAGCAATGCAGTTGTTAAAGAACTTGTGTA
 GACTATAAAATGTCGTACATTATTTCAACTCACTACCATTCTAGTAGAAGATTATTCTCAAATGTT
 GCTGTGCGCCTAGGACATATGGCATGCATGGTAGAAAATGAATGTGAAGACCCAGCCAGGAGACTATTA
 CGTTCCCTCTATAAATTCATTAAGGGAGCTTGTCTAAAAGCTATGGCTTTAATGCAGCAAGGCTTGTAA
 TCTCCCAGAGGAAGTTATTCAAAGGGACATAGAAAAGCAAGAGAATTTGAGAAGATGAATCAGTCACTA
 CGATTATTTCCGGGAAGTTTGCCTGGCTAGTGAAGGTCAACTGTAGATGCTGAAGCTGTCCATAAATTGC
 TGACTTTGATTAAGGAATTA

AGCGGACCGACGCGTACGCGCCGCTCGAGCAGAACTCATCTCAGAAGAGGATCTGGCAGCAAATGATATCC
TGGATTACAAGGATGACGACGA TAAGGTTTAA

Protein Sequence:

>RC401437 representing NM_000179
Red=Cloning site Green=Tags(s)

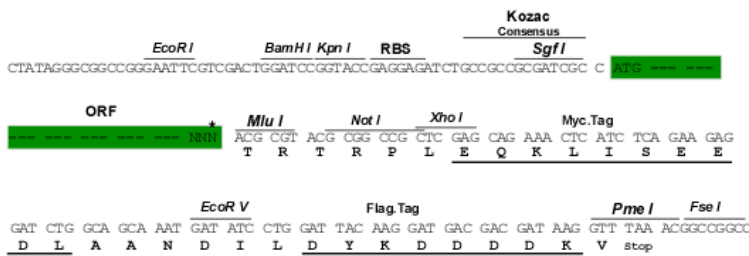
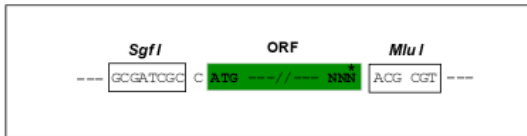
MSRQSTLYSFFPKSPALSDANKASARASREGGRAAAAPGASPSPGDDAAWSEAGPGRPLARSASPPKAK
NLNGGLRRSVAPAAPTSCDFSPGDLVWAKMEGYPWWPCLVYNHPFDGTFIREKGKSVRVHVQFFDDSPTR
GWVSKRLLKPYTGSKSKEAQKGGHFYSAPKEILRAMQRADEALNKDKIKRLELAVCDPSEPEEEEEEMEV
GTTYVTDKSEEDNEIESEEEVQPKTQGSRRSSRIKRRVISEDSEDIIGGSDVEFKPDTKEEGSSDEISS
GVGDSESEGLNSPVKVARKRKRMVTGNGLKRRSSRKETPSATKQATSISSETKNTLRAF SAPQNSSEQA
HVSGGGDDSSRPTVWYHETLEWLKEEKRRDEHRRRPDHPDFDASTLYVPEDFLNSCTPGMRKWWQIKSQN
FDLVICYKVGKIFYELYHMDALIGVSELGLVFMKGNWAHSGFPEIAFGYSDSLVQKGYKVARVEQTETPE
MMEARCRKMAHISKYDRVVRREICRIITKGTQTYSVLEGDPSENYSKYL LSLKEKEEDSSGHTRAYGVCF
VDTSLGKFFIGQFSDDRHC SRFRTLVAHYPPVQVLFKGNLSKETKTILKSSLSCSLQEGLIPGSQFWD A
SKTLRLLLEEEYFREKLSDGIGVMLPQVLKGMTSESDSIGLTPGEKSELALSALGGCVFYLLKCLIDQEL
LSMANFEEYIPLDSDTVSTTRSGAIFTKAYQRMVLDAVTLNNEIFLNGTNGSTEGTL LERVDTCHTPFG
KRL LKQWL CAPLCNHYAINDRLDAIEDLMVVPDKISEVVELLKKLPDLERLLSKIHNVSPLKSNHPDS
RAIMYEETTSKKKIIDFLSALEGFKVMCKIIGIMEEVADGFKSKILKQVISLQTKNPEGHPDLTVELN
RWDTAFDHEKARKTGLITPKAGFSDYDQALADIRENEQSLLYLEKQRNRIGCRTIVYWGIGRNRVQLE
IPENFTTRNLPEEYELKSTKKGCKRYWTKTIEKLANLANAEERRDVSLKDCMRRLFYNFDKNYKDWQSA
VECIAVLVLLCLANYSRGGDGPMPRPVILLPEDTPPFLELKGSRHPCITKTFFGDDFIPNDILIGCEEE
EQENGKAYCVLVTGPNMGGKSTLMRQAGLLAVMAQMGCYVPAEVCRLTPIDRVFTRLGASDRIMSGESTF
FVELSETASILMHATAHSLVLDDELGRGTATFDGTAIANAVVKELAEIKCRTLFSTHYHSLVEDYSQNV
AVRLGHMACMVENECEDPSQETITFLYKFKGACPKSYGFNAARLANLPEEVIQKGRHKAREFEKMNQSL
RLFREVLASERSTVDAEAVHKLLTLIKEL

SGPTRRRLRLEQKLI SEEDLAANDILDYKDDDDKV

Restriction Sites:
Cloning Scheme:

Sgfl-MluI

Cloning sites used for ORF Shutting:



* The last codon before the Stop codon of the ORF

OTI Disclaimer:	<p>Due to the inherent nature of this plasmid, standard methods to replicate additional amounts of DNA in E. coli are highly likely to result in mutations and/or rearrangements. Therefore, OriGene does not guarantee the capability to replicate this plasmid DNA. Additional amounts of DNA can be purchased from OriGene with batch-specific, full-sequence verification at a reduced cost. Please contact our customer care team at custsupport@origene.com or by calling 301.340.3188 option 3 for pricing and delivery.</p> <p>The molecular sequence of this clone aligns with the gene accession number as a point of reference only. However, individual transcript sequences of the same gene can differ through naturally occurring variations (e.g. polymorphisms), each with its own valid existence. This clone is substantially in agreement with the reference, but a complete review of all prevailing variants is recommended prior to use. More info</p>
OTI Annotation:	<p>This clone was engineered to express the complete ORF with an expression tag. Expression varies depending on the nature of the gene.</p>
Components:	<p>The ORF clone is ion-exchange column purified and shipped in a 2D barcoded Matrix tube containing 10ug of transfection-ready, dried plasmid DNA (reconstitute with 100 ul of water).</p>
Note:	<p>Plasmids are not sterile. For experiments where strict sterility is required, filtration with 0.22um filter is required.</p>
RefSeq:	<p>NP_000170</p>
RefSeq Size:	<p>4080 bp</p>
RefSeq ORF:	<p>4083 bp</p>
Locus ID:	<p>2956</p>
Cytogenetics:	<p>2p16.3</p>
Domains:	<p>PWWP, MutS_V, MutS_I, MutS_III, MutS_II, MutS_IV</p>
Protein Families:	<p>Druggable Genome, Stem cell - Pluripotency</p>
Protein Pathways:	<p>Colorectal cancer, Mismatch repair, Pathways in cancer</p>
MW:	<p>149.6 kDa</p>
Gene Summary:	<p>This gene encodes a member of the DNA mismatch repair MutS family. In E. coli, the MutS protein helps in the recognition of mismatched nucleotides prior to their repair. A highly conserved region of approximately 150 aa, called the Walker-A adenine nucleotide binding motif, exists in MutS homologs. The encoded protein heterodimerizes with MSH2 to form a mismatch recognition complex that functions as a bidirectional molecular switch that exchanges ADP and ATP as DNA mismatches are bound and dissociated. Mutations in this gene may be associated with hereditary nonpolyposis colon cancer, colorectal cancer, and endometrial cancer. Transcripts variants encoding different isoforms have been described. [provided by RefSeq, Jul 2013]</p>