

Product datasheet for **RC401410**

MSH6 (NM_000179) Human Mutant ORF Clone

Product data:

Product Type:	Mutant ORF Clones
Product Name:	MSH6 (NM_000179) Human Mutant ORF Clone
Mutation Description:	M492V
Affected Codon#:	492
Affected NT#:	1474
Nucleotide Mutation:	MSH6 Mutant (M492V), Myc-DDK-tagged ORF clone of Homo sapiens mutS homolog 6 (E. coli) (MSH6) as transfection-ready DNA
Effect:	Colorectal cancer, non-polyposis
Symbol:	MSH6
Synonyms:	GTBP; GTMBP; HNPCC5; HSAP; MMRC3; p160
E. coli Selection:	Kanamycin (25 ug/mL)
Mammalian Cell Selection:	Neomycin
Vector:	pCMV6-Entry (PS100001)
Tag:	Myc-DDK
ACCN:	NM_000179
ORF Size:	4080 bp
Restriction Sites:	SgfI-MluI
ORF Nucleotide Sequence:	>RC401410 representing NM_000179 Red=Cloning site Blue=ORF Green=Tags(s)

TTTTGTAATACGACTCACTATAGGGCGCCGGGAATTCGTCGACTGGATCCGGTACCGAGGAGATCTGCC
GCC**GCGATCGCC**

ATGTGCGGACAGAGCACCTGTACAGCTTCTTCCCAAGTCTCCGGCGCTGAGTGATGCCAACAAGGCCT
CGGCCAGGGCCTCACGCGAAGGCGGCCGTGCCGCCGCTGCCCGGGGCCTCTCCTTCCCGAGGCGGGGA
TGCGGCCTGGAGCGAGGCTGGGCCTGGGCCAGGCCCTTGGCGCGCTCCGCGTACCGCCCAAGGCGAAG
AACCTCAACGGAGGGCTGCGGAGATCGGTAGCGCCTGCTGCCCCACCAGTTGTGACTTCTACCAGGAG
ATTTGGTTTGGCCAAGATGGAGGGTTACCCTGGTGGCCTTGTCTGGTTTACAACCACCCCTTTGATGG
AACATTATCCGCGAGAAAGGAAATCAGTCCGTGTTTCATGTACAGTTTTTTGATGACAGCCCAACAAGG
GGCTGGGTTAGCAAAGGCTTTAAAGCCATATACAGGTTCAAATCAAAGGAAGCCAGAAGGGAGGTC



[View online »](#)

ATTTTTACAGTGCAAAGCCTGAAATACTGAGAGCAATGCAACGTGCAGATGAAGCCTTAAATAAAGACAA
GATTAAGAGGCTTGAATTGGCAGTTTGTGATGAGCCCTCAGAGCCAGAAGAGGAAGAAGAGATGGAGGTA
GGCACAACCTACGTAACAGATAAGAGTGAAGAAGATAATGAAATTGAGAGTGAAGAGGAAGTACAGCCTA
AGACACAAGGATCTAGGCGAAGTAGCCGCCAAATAAAAAACGAAGGGTCATATCAGATTCTGAGAGTGA
CATTGGTGGCTCTGATGTGGAATTTAAGCCAGACACTAAGGAGGAAGGAAGCAGTGTGAAATAAGCAGT
GGAGTGGGGGATAGTGAAGTGAAGGCCTGAACAGCCCTGTCAAAGTTGCTCGAAAGCGGAAGAGAATGG
TGACTGGAAATGGCTCTCTTAAAAGGAAAAGCTCTAGGAAGGAAACGCCCTCAGCCACCAACAAGCAAC
TAGCATTTCATCAGAAACCAAGAATACTTTGAGAGCTTTCTCTGCCCTCAAATTTCTGAATCCCAAGCC
CACGTTAGTGGAGGTGGTGTGACAGTAGTCGCCCTACTGTTTGGTATCATGAACTTTAGAATGGCTTA
AGGAGGAAAAGAGAAGAGATGAGCACAGGAGGAGGCTGATCACCCGATTTTGTGATCTACACTCTA
TGTGCCTGAGGATTTCTCAATTCTTGTACTCTGGGATGAGGAAGTGGTGGCAGATTAAGTCTCAGAAC
TTTGTCTTGTCTGTTACAAGTGGGAAAATTTATGAGCTGTACCACATGGATGCTCTTATTGGAG
TCAGTGAAGTGGGCTGGTATTCATGAAAGGCAACTGGGCCATTCTGGCTTCTGAAATTGCATTTGG
CCGTTATTCAGATTCCTGGTGCAGAAGGGCTATAAAGTAGCACGAGTGAACAGACTGAGACTCCAGAA
ATGGTGGAGGCACGATGTAGAAAGATGGCACATATATCCAAGTATGATAGAGTGGTGGAGGGGAGATCT
GTAGGATCATTACCAAGGTACACAGACTTACAGTGTGCTGGAAGGTGATCCCTCTGAGAACTACAGTAA
GTATCTTCTTAGCCTCAAAGAAAAGAGGAAGATTCTTCTGGCCATACTCGTGCATATGGTGTGTGCTTT
GTTGATACTTCACTGGGAAAGTTTTTCATAGGTCAGTTTTCAGATGATCGCCATTGTTTCGAGATTTAGGA
CTCTAGTGGCACACTATCCCCAGTACAAGTTTTATTTGAAAAAGGAAATCTCTCAAAGGAAACTAAAAC
AATTCTAAAGAGTTCATTGTCTGTCTCTTCCAGGAAGTCTGATACCCGGCTCCAGTTTTGGGATGCA
TCCAAAACCTTTGAGAAGTCTCCTTGAGGAAGAATTTTAGGGAAAAGCTAAGTATGGCATTGGGGTGA
TGTTACCCAGGTGCTTAAAGGATGACTTCAGAGTCTGATCCATTGGGTTGACACCAGGAGAGAAAAG
TGAATTTGGCCCTCTCTGCTCTAGGTGGTGTGCTCTTCTACCTCAAAAAATGCCTTATTGATCAGGACTT
TTATCAATGGCTAATTTTGAAGAATATATTCCTTGGATTCTGACACAGTCAGCACTACAAGATCTGGTG
CTATCTTACCAGCAAGCTATCAACGAATGGTGTAGATGCAGTGCATTAACAACCTGGAGATTTTTCT
GAATGGAACAAATGGTTCTACTGAAGGAACCTACTAGAGAGGGTTGATACTTGCCTACTCCTTTTGGT
AAGCGGCTCCTAAAGCAATGGCTTTGTGCCCACTCTGTAAACCATTATGCTATTAATGATCGTCTAGATG
CCATAGAAGACCTCATGGTTGTGCTGACAAAATCTCCGAAGTTGTAGAGCTTCTAAAGAAGCTTCCAGA
TCTTGAGAGGCTACTCAGTAAAATTCATAATGTTGGGTCTCCCTGAAGAGTCAAGAACCCAGACAGC
AGGGCTATAATGTATGAAGAACTACATACAGCAAGAAGAAGATTATTGATTTTCTTCTGCTCTGGAAG
GATTCAAAGTAATGTGTAATATAGGGATCATGGAAGAAGTGTGCTGATGGTTTTAAGTCTAAAATCCT
TAAGCAGGTCTCTCTGACAGCAAAAATCCTGAAGTCTGTTTTCTGATTTGACTGTAGAATTGAAC
CGATGGGATACAGCCTTTGACCATGAAAAGGCTCGAAAGACTGGACTTATTACTCCCAAAGCAGGCTTTG
ACTCTGATTATGACCAAGCTCTTGTGACATAAGAGAAAATGAACAGAGCCTCCTGGAATACCTAGAGAA
ACAGCGCAACAGAATTGGCTGTAGGACCATAGTCTATTGGGGGATTGGTAGGAACCGTTACCAGCTGGAA
ATTCTGAGAATTTACCAGTCAATTTGCCAGAAGAATACGAGTTGAAATCTACCAAGAAGGGCTGTA
AACGATACTGGACAAAACCTATTGAAAAGAAGTTGGCTAATCTCATAAATGCTGAAGAACGGAGGGATGT
ATCATTGAAGGACTGCATGCGGCGACTGTTCTATAACTTTGATAAAAAATTACAAGGACTGGCAGTCTGCT
GTAGAGTGTATCGCAGTGTGGATGTTTTACTGTGCTGGCTAACTATAGTCGAGGGGGTGTGGTCTCTA
TGTGTGCCCAAGTAACTCTGTTGCCGGAAGATACCCCCCTTCTTAGAGCTTAAAGGATCACGCCATCC
TTGCATTACGAAGACTTTTTTTGGAGATGATTTTATTCCTAATGACATTCTAATAGGCTGTGAGGAAGG
GAGCAGGAAAATGGCAAAGCCTATTGTGTGCTTGTACTGGACCAAAATAGGGGGCAAGTCTACGCTTA
TGAGACAGGCTGGCTTATTAGCTGTAATGGCCAGATGGGTTGTTACGTCCTGCTGAAGTGTGACAGGCT
CACACCAATTGATAGAGTGTACTAGACTTGGTGCCTCAGACAGAATAATGTCAGGTGAAAGTACATTT
TTTGTGAATTAAGTGAAGTGCAGCATACTCATGCATGCAACAGCACATTCTCTGGTCTGTGGATG
AATTAGGAAGAGTACTGCAACATTTGATGGGACGGCAATAGCAATGCAGTTGTTAAAGAACTGTGTA
GACTATAAAATGTCGTACATTATTTCAACTCACTACCATTCTAGTAGAAGATTATTCTCAAATGTT
GCTGTGCGCCTAGGACATATGGCATGCATGGTAGAAAATGAATGTGAAGACCCAGCCAGGAGACTATTA
CGTTCTCTATAAATTCATTAAGGGAGCTTGTCTAAAAGCTATGGCTTTAATGCAGCAAGGCTTGTCTAA
TCTCCCAGAGGAAGTTATTCAAAGGGACATAGAAAAGCAAGAGAATTTGAGAAGATGAATCAGTCACTA
CGATTATTTCCGGGAAGTTTGCCTGGCTAGTGAAGGTCAACTGTAGATGCTGAAGCTGTCCATAAATTGC
TGACTTTGATTAAGGAATTA

AGCGGACCGACGCGTACGCGCCGCTCGAGCAGAACTCATCTCAGAAGAGGATCTGGCAGCAAATGATATCC
TGGATTACAAGGATGACGACGA TAAGGTTTAA

Protein Sequence:

>RC401410 representing NM_000179
Red=Cloning site Green=Tags(s)

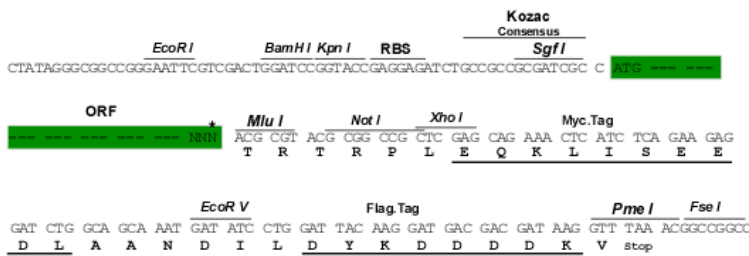
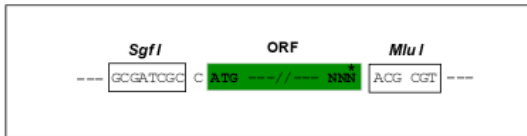
MSRQSTLYSFFPKSPALSDANKASARASREGGRAAAAPGASPSPGDDAAWSEAGPGRPLARSASPPKAK
NLNGGLRRSVAPAAPTSCDFSPGDLVWAKMEGYPWWPCLVYNHPFDGTFIREKGKSVRVHVQFFDDSPTR
GWVSKRLLKPYTGSKSKEAQKGGHFYSAPKEILRAMQRADEALNKDKIKRLELAVCDPSEPEEEEEEMEV
GTTYVTDKSEEDNEIESEEEVQPKTQGSRRSSRIKRRVISEDSEDIIGGSDVEFKPDTKEEGSSDEISS
GVGDSESEGLNSPVKVARKRKRMVTGNGLKRRSSRKETPSATKQATSISSETKNTLRAF SAPQNSSEQA
HVSGGGDDSSRPTVWYHETLEWLKEEKRRDEHRRRDPDFDASTLYVPEDFLNSCTPGMRKWWQIKSQN
FDLVICYKVGKIFYELYHMDALIGVSELGLVFMKGNWAHSGFPEIAFGRYSDSLVQKGYKVARVEQTETPE
MVEARCRKMAHISKYDRVVRREICRIITKGTQYVLEGDPSENYSKYLKSLKEKEEDSSGHTRAYGVCF
VDTSLGKFFIGQFSDDRHCSTRFRLVAHYPPVQVLFKGNLSKETKTKLSSLSLQGLIPGSQFWD
SKTLRLLLEEEYFREKLSDGIGVMLPQVLKGMTSESDSIGLTPGEKSELALSALGGCVFYLLKCLIDQEL
LSMANFEEYIPLDSDTVSTTRSGAIFTKAYQRMVLDATLNNLEIFLNGTNGSTEGTLLELVDTCHTPF
KRLKQWLCAPLCNHYAINDRLDAIEDLMVVPDKISEVVELLKKLPDLERLLSKIHNVSPLKSNHPDS
RAIMYEETTSKKKIIDFLSALEGFKVMCKIIGIMEEVADGFKSKILKQVISLQTKNPEGRFPDLTVELN
RWDTAFDHEKARKTGLITPKAGFSDYDQALADIRENEQSLLYLEKQRNRIGCRTIVYWGIGRNRVQLE
IPENFTTRNLPEEYELKSTKKGCKRYWTKTIEKLANLANAEERRDVSLKDCMRRLFYNFDKNYKDWQSA
VECIAVLVLLCLANYSRGGDGPMPRPVILLPEDTPPFLELKGSRHPCITKTFFGDDFIPNDILIGCEEE
EQENGKAYCVLVTGPNMGGKSTLMRQAGLLAVMAQMGCYVPAEVCRLTPIDRVFTRLGASDRIMSGESTF
FVELSETASILMHATAHSLVLVDELGRGTATFDGTAIANAVVKELAEIKCRTLFSTHYHSLVEDYSQNV
AVRLGHMACMVENECEDPSQETITFLYKFKGACPKSYGFNAARLANLPEEVIQKGRHKAREFEKMNQSL
RLFREVLASERSTVDAEAVHKLLTLIKEL

SGPTRRRLRLEQKLISEEDLAANDILDYKDDDDKV

Restriction Sites:
Cloning Scheme:

Sgfl-MluI

Cloning sites used for ORF Shutting:



* The last codon before the Stop codon of the ORF

OTI Disclaimer:	<p>Due to the inherent nature of this plasmid, standard methods to replicate additional amounts of DNA in E. coli are highly likely to result in mutations and/or rearrangements. Therefore, OriGene does not guarantee the capability to replicate this plasmid DNA. Additional amounts of DNA can be purchased from OriGene with batch-specific, full-sequence verification at a reduced cost. Please contact our customer care team at custsupport@origene.com or by calling 301.340.3188 option 3 for pricing and delivery.</p> <p>The molecular sequence of this clone aligns with the gene accession number as a point of reference only. However, individual transcript sequences of the same gene can differ through naturally occurring variations (e.g. polymorphisms), each with its own valid existence. This clone is substantially in agreement with the reference, but a complete review of all prevailing variants is recommended prior to use. More info</p>
OTI Annotation:	<p>This clone was engineered to express the complete ORF with an expression tag. Expression varies depending on the nature of the gene.</p>
Components:	<p>The ORF clone is ion-exchange column purified and shipped in a 2D barcoded Matrix tube containing 10ug of transfection-ready, dried plasmid DNA (reconstitute with 100 ul of water).</p>
RefSeq:	<p>NP_000170</p>
RefSeq Size:	<p>4080 bp</p>
RefSeq ORF:	<p>4083 bp</p>
Locus ID:	<p>2956</p>
Cytogenetics:	<p>2p16.3</p>
Domains:	<p>PWWP, MutS_V, MutS_I, MutS_III, MutS_II, MutS_IV</p>
Protein Families:	<p>Druggable Genome, Stem cell - Pluripotency</p>
Protein Pathways:	<p>Colorectal cancer, Mismatch repair, Pathways in cancer</p>
MW:	<p>149.6 kDa</p>
Gene Summary:	<p>This gene encodes a member of the DNA mismatch repair MutS family. In E. coli, the MutS protein helps in the recognition of mismatched nucleotides prior to their repair. A highly conserved region of approximately 150 aa, called the Walker-A adenine nucleotide binding motif, exists in MutS homologs. The encoded protein heterodimerizes with MSH2 to form a mismatch recognition complex that functions as a bidirectional molecular switch that exchanges ADP and ATP as DNA mismatches are bound and dissociated. Mutations in this gene may be associated with hereditary nonpolyposis colon cancer, colorectal cancer, and endometrial cancer. Transcripts variants encoding different isoforms have been described. [provided by RefSeq, Jul 2013]</p>