

## Product datasheet for **RC400608**

### BRCA2 (NM\_000059) Human Mutant ORF Clone

#### Product data:

Product Type:	Mutant ORF Clones
Product Name:	BRCA2 (NM_000059) Human Mutant ORF Clone
Mutation Description:	Q1782X
Affected Codon#:	1782
Affected NT#:	5344
Nucleotide Mutation:	BRCA2 Mutant (Q1782X), Myc-DDK-tagged ORF clone of Homo sapiens breast Cancer, early onset (BRCA2) as transfection-ready DNA
Effect:	Ovarian cancer
Symbol:	BRCA2
Synonyms:	BRCC2; BROVCA2; FACD; FAD; FAD1; FANCD; FANCD1; GLM3; PNCA2; XRCC11
E. coli Selection:	Kanamycin (25 ug/mL)
Mammalian Cell Selection:	Neomycin
Vector:	pCMV6-Entry (PS100001)
Tag:	Myc-DDK
ACCN:	NM_000059
ORF Size:	5343 bp
Restriction Sites:	Sgfl-RsrII
ORF Nucleotide Sequence:	>RC400608 representing NM_000059 Red=Cloning site Blue=ORF Green=Tags(s)

TTTTGTAATACGACTCACTATAGGGCGCCGGGAATTCGTCGACTGGATCCGGTACCGAGGAGATCTGCC  
GCC**CGATCGCC**

ATGCCTATTGGATCCAAAGAGAGGCCAACATTTTTGAAATTTTTAAGACACGCTGCAACAAAGCAGATT  
TAGGACCAATAAGTCTTAATTGGTTTGAAGAACTTTCTTCAGAAGCTCCACCCTATAATTCTGAACCTGC  
AGAAGAATCTGAACATAAAAAACAACAATTACGAACCAACCTATTTAAAACCTCCACAAAGGAAACCATCT  
TATAATCAGCTGGCTTCAACTCCAATAATTTCAAAGAGCAAGGGCTGACTCTGCCGCTGTACCAATCTC  
CTGTAAGAATTAGATAAATTCAAATTAGACTTAGGAAGGAATGTTCCCAATAGTAGACATAAAGTCT  
TCGCACAGTGAACAACTAAATGGATCAAGCAGATGATGTTTCTGTCCACTTCTAAATCTGTCTTAGT  
GAAAGTCTGTTGTTCTACAATGTACACATGTAACACCACAAAGAGATAAGTCAGTGGTATGTGGGAGTT



[View online »](#)

TGTTCATACACCAAAGTTTGTGAAGGGTCGTCAGACACCAAAACATATTTCTGAAAGTCTAGGAGCTGA  
 GGTGGATCCTGATATGTCTTGGTCAAGTCTTTAGCTACACCACCACCCTTAGTTCTACTGTGCTCATA  
 GTCAGAAATGAAGAAGCATCTGAAACTGTATTTCTCATGATACTACTGCTAATGTGAAAAGCTATTTTT  
 CCAATCATGATGAAAGTCTGAAGAAAAATGATAGATTTATCGTCTCTGTGACAGACAGTGAAAACACAAA  
 TCAAAGAGAAGCTGCAAGTCATGGATTTGGAAAAACATCAGGGAATTCATTTAAAGTAAATAGCTGCAAA  
 GACCACATTGAAAAGTCAATGCCAAATGTCTAGAAGATGAAGTATATGAAACAGTTGTAGATACCTCTG  
 AAGAAGATAGTTTTTTCATTATGTTTTTCTAAATGTAGAACAAAAATCTCAAAAAAGTAAAGAACTAGCAA  
 GACTAGGAAAAAAATTTCCATGAAGCAACGCTGATGAATGTGAAAAATCTAAAAACCAAGTGAAAGAA  
 AAATACTCATTTGTATCTGAAGTGGAACCAATGATACTGATCCATTAGATTCAAATGTAGCAAATCAGA  
 AGCCCTTTGAGAGTGGAAGTGACAAAATCTCCAAGGAAGTTGTACCGTCTTTGGCCTGTGAATGGTCTCA  
 ACTAACCTTTCAGGTCTAAATGGAGCCAGATGGAGAAAAATACCCTATTGCATATTTCTTCATGTGAC  
 CAAAATATTTAGAAAAAGACCTATTAGACACAGAGAACAAAAGAAAGAAAGATTTTCTACTTCAGAGA  
 ATTCTTTGCCACGTATTTCTAGCCTACCAAAATCAGAGAAGCCATTAATGAGGAAACAGTGGAATAAA  
 GAGAGATGAAGAGCAGCATCTTGAATCTCATACAGACTGCATTCTGCAGTAAAGCAGGCAATATCTGGA  
 ACTTCTCCAGTGGCTTTCATTTCCAGGTATCAAAAAGTCTATATTCAGAATAAGAGAATCACCTAAAG  
 AGACTTCAATGCAAGTTTTTCCAGGTATATGACTGATCCAAACTTTAAAAAAGAAACTGAAGCCTCTGA  
 AAGTGGACTGGAATACATACTGTTTGCTCACAGAAGGAGGACTCCTTATGTCCAAATTTAATTGATAAT  
 GGAAGCTGGCCAGCCACCACCACAGAAATCTGTAGCTTTGAAGAATGCAGGTTAATATCCACTTTGA  
 AAAAGAAAAACAAATAAGTTTATTTATGCTATACATGATGAAACATCTTATAAAGGAAAAAAATACCGAA  
 AGACCAAAAAATCAGAATAATTAAGTGTTCAGCCAGTTTGAAGCAATGCTTTTGAAGCACCCTTACA  
 TTTGCAAAATGCTGATTCAGGTTTATTGCATTCTCTGTGAAAAGAAGCTGTTACAGAAATGATTTGAAG  
 AACCAATTTGCTTAACTAGCTCTTTGGGACAATCTGAGGAAATGTTCTAGAAATGAAACATGTTT  
 TAATAATACAGTAATCTCTCAGGATCTTGATTATAAAGAAGCAAAATGTAATAAGGAAAAACTACAGTTA  
 TTTATTACCCAGAAGCTGATTCTGTGATGCCTGCAGGAAGGACAGTGTGAAAAATGCTCAAAAAAGCA  
 AAAAAGTTTCAGATATAAAGAAGAGGTCTGGCTGCAGCATGTACCCAGTACAACATTCAAAAGTGGAA  
 ATACAGTGATACTGACTTTCAATCCCAGAAAAGTCTTTTATATGATCATGAAAAATGCCAGCACTCTTATT  
 TTAACTCTACTTCCAAGGATGTTCTGTCAAACCTAGTCATGATTTCTAGAGGCAAGAATCATACAAAA  
 TGTCAGACAAGCTCAAAGGTAACAATTATGAATCTGATGTTGAATTAACCAAAAAATTTCCCATGGAAAA  
 GAATCAAGATGTATGTGCTTTAAATGAAAATTAAAAAACGTTGAGCTGTTGCCACCTGAAAAATACATG  
 AGAGTAGCATCACCTTCAAGAAAGGTACAATTCACCAAAAACACAATCTAAGAGTAATCAAAAAAATC  
 AAGAAGAACTACTTCAATTTCAAAAATAACTGTCAATCCAGACTCTGAAGAATTTTCTCAGACATGA  
 GAATAATTTTGTCTTCCAAGTAGCTAATGAAAGGAATAATCTTGCTTTAGGAAATACTAAGGAATTCAT  
 GAAACAGACTTGACTTGTGTAACCGAACCCATTTTCAAGAATCTACCATGGTTTTATATGGAGACACAG  
 GTGATAAAACAAGCAACCCAAGTGTCAATTAAAAAAGATTTGGTTTATGTTCTTGCAGAGGAGAACAAAA  
 TAGTGTAAAGCAGCATATAAAAAAGACTCTAGGTCAAGATTTAAATCGGACATCTCCTTGAATATAGAT  
 AAAATACCAGAAAAAAATAATGATTACATGAACAAATGGGCAGGACTCTTAGGTCCAATTTCAAATCACA  
 GTTTTGGAGGTAGCTTCAAGACAGCTTCAAATAAGGAAATCAAGCTCTCTGAACATAACATTAAGAAGAG  
 CAAAATGTTCTCAAAGATATTGAAGAACAATATCCTACTAGTTTAGCTTGTGTTGAAATGTAATACC  
 TTGGCATTAGATAATCAAAGAAACTGAGCAAGCCTCAGTCAATTAATACTGTATCTGCACATTTACAGA  
 GTAGTGTAGTTGTTTCTGATTGTAAAAATAGTCATATAACCCCTCAGATGTTATTTTCCAAGCAGGATTT  
 TAATTCAAACCATAATTTAACACCTAGCCAAAAGGCAGAAATTACAGAATTTTCTACTATATTAGAAGAA  
 TCAGGAAGTCAGTTTGAATTTACTCAGTTTAGAAAACCAAGCTACATATTGCAGAAGAGTACATTTGAAG  
 TGCCTGAAAACAGATGACTATCTTAAAGACCCTTCTGAGGAATGCAGAGATGCTGATCTTCATGTCAT  
 AATGAATGCCCATCGATTGGTCAGGTAGACAGCAGCAAGCAATTTGAAGGTACAGTTGAAATTAACGG  
 AAGTTTGTGGCCTGTTGAAAAATGACTGTAACAAAAGTCTTCTGGTTATTTAACAGATGAAAAATGAAG  
 TGGGGTTTAGGGCTTTTATTCTGCTCATGGCACAAAAGTGAATGTTTCTACTGAAGCTCTGCAAAAAGC  
 TGTGAAACTGTTTGTGATATTGAGAATATTAGTGAGGAACTCTGCAGAGGTACATCCAATAAGTTTA  
 TCTTCAAGTAAATGTCATGATTCTGTTGTTCAATGTTTAAAGATGAAAAATCATAATGATAAACTGTAA  
 GTGAAAAAAATAATAATGCCAACTGATATTACAAAATAATTTGAAATGACTACTGGCACTTTTGTGGA  
 AGAAATTAAGTAAAAATCAAGAGAAATGAAAAATGAAGATAACAAATATACTGCTGCCAGTAGAAAT  
 TCTCATAACTTAGAATTTGATGGCAGTGATTCAAGTAAAAATGATACTGTTTGTATTATAAAGATGAAA  
 CGGACTTGCTATTTACTGATCAGCACAACATATGTCTTAAATTTCTGGCCAGTTTATGAAGGAGGGAAA

CACTCAGATTAAGAAGATTTGTCAAGTTAACTTTTTGGAAGTTGCGAAAGCTCAAGAAGCATGTCAT  
 GGTAATACTTCAATAAAGAACAGTTAACTGCTACTAAAACGGAGCAAAATATAAAGATTTTGAGACTT  
 CTGATACATTTTTTCAGACTGCAAGTGGGAAAAATATTAGTGTGCGCAAAGAGTCATTTAATAAAATTGT  
 AAATTTCTTTGATCAGAAACCAGAAGAATTGCATAACTTTTCTTAAATTCTGAATTACATTCTGACATA  
 AGAAAGAACAAAATGGACATTCTAAGTTATGAGGAAACAGACATAGTTAAACACAAAATACTGAAAGAAA  
 GTGTCCAGTTGGTACTGGAAATCAACTAGTGACCTTCCAGGGACAACCCGAACGTGATGAAAAGATCAA  
 AGAACCTACTCTATTGGGTTTTCATACAGCTAGCGGGAAAAAAGTTAAAATTGCAAAGGAATCTTTGGAC  
 AAAGTGA AAAACCTTTTTGATGAAAAAGCAAGGTAAGTGAATCACCAGTTTTAGCCATCAATGGG  
 CAAAGACCCTAAAGTACAGAGAGGCTGTAAAGACCTGAATTAGCATGTGAGACCATTGAGATCACAGC  
 TGCCCCAAAGTGTAAAGAAATGCAGAATTCTCTCAATAATGATAAAAACCTTGTTTCTATTGAGACTGTG  
 GTGCCACCTAAGCTCTTAAGTGATAATTTATGTAGACAACTGAAAATCTCAAAACATCAAAAAGTATCT  
 TTTTGAAGTTAAAGTACATGAAAATGTAGAAAAAGAACAGCAAAAAGTCTGCAACTTGTACACAAA  
 TCAGTCCCCTTATTCAGTCATTGAAAATTCAGCCTTAGCTTTTTACACAAGTTGTAGTAGAAAACTTCT  
 GTGAGTCAGACTTCATTACTGAAGCAAAAAATGGCTTAGAGAAGGAATATTTGATGGTCAACCAGAAA  
 GAATAAATACTGCAGATTATGTAGGAAATATTTGTATGAAAATAATTCAAACAGTACTATAGCTGAAAA  
 TGACAAAAATCATCTCTCCGAAAAACAAGATACTTATTTAAGTAAACAGTGCATGTCTAACAGCTATTCC  
 TACCATTCTGATGAGGTATAAATGATTCAGGATATCTCTCAAAAAATAAAGTATTCTGGTATTGAGC  
 CAGTATTGAAGAATGTTGAAGAT

AGCGGACCGACGCGTACGCGGCCGCTCGAGCAGAAACTCATCTCAGAAGAGGATCTGGCAGCAAATGATATCC  
 TGGATTACAAGGATGACGACGA TAAGGTTTAA

**Protein Sequence:**

>RC400608 representing NM\_000059  
 Red=Cloning site Green=Tags(s)

MPIGSKERPTFFEIFKTRCNKADLGPISLWNFEELSSEAPPYNSEPAEESSEHKNNNYEPNLFKTPQRKPS  
 YNQLASTPIIFKEQGLTLPLYQSPVKELDKFKLDLGRNVPNSRHKSLRTVKTMDQADDVSCPLLNSCLS  
 ESPVVLQCTHVTQRDKSVVCGSLFHTPKFVKGRQTPKHISESLGAEVDPDMSWSSSLATPPTLSSTVLI  
 VRNEEASETVFPHDTTANVKS YFSNHDESLKKNDRFIASVTDSENTNQREAAASHGFGKTSNGSNFKVNSCK  
 DHIGKSMNPVLEDEVYETVVDTSEEDSFLCFSKCRTKNLQKVRTSKTRKKIFHEANAECEKSKNQVKE  
 KYSFVSEVEPNDDPLDSNVANQKPFESGSDKISKEVPSLACEWSQLTSLGLNGAQMEKIPLLHITSSCD  
 QNISEKDLLDTENKRKDFLTSNSLPRISLSEKPLNEETVYNKRDEEQHLESHTDCILAVKQAISSG  
 TSPVASSFQGIKKSIFRIRESPKETFNASFSGHMTDPNFKKETEASESGLEIHTVCSQKEDSLCPNLIDN  
 GSWPATTTQNSVALKNAGLISTLKKTNKFIYAIHDETSYKGGKIPKDQKSELINCSAQFEANAFEAPLT  
 FANADSGLLHSSVKRSCSQNDSEPTLSLTSFSGTILRKCSRNETCSNNTVISQDLDYKEAKCNKEKLQL  
 FITPEADSLSCLQEQCENDPKSKKVSIDIKEEVLAAACHPVQHSKVEYSDFQSQKSLLYDHENASTLI  
 LTPTSKDVL SNLVMISRGKESYKMSDKLKGNNYSDVELTKNIPMEKNQDVCALNENYKNVLLPPEKYM  
 RVASPSRKVQFNQNTNLRVIQKNQEETTSISKITVNPDSEELFSDNENNFVQVANERNLALGNTKELH  
 ETDLTCVNEPIFKNSTMVL YGDTGDKQATQVSIKKDLVYVLAENKNSVKQHIKMTLGQDLKSDISLNI  
 KIPEKNNDYMNKWAGLLGPISNHSFGGSFRASNKEIKLSEHNKKSMMFFKDIEEQYPTSLACVEIVNT  
 LALDNQKLLSKPQSINTVSAHLQSSVVVSDCKNSHITPQMLFSKQDFNSNHNLTSPQKAEITELSTILEE  
 SGSQFEFTQFRKPSYILQKSTFEVPENQMTILKTTSEECRDADLHVIMNAPSIGQVDSSKQFEGTVEIKR  
 KFAGLLKNDCKNSASGYLTDENEVGFGRFYSAHGKLVNSTEALQKAVKLFSDIENISEETSAEVHPISL  
 SSKCHDSVVSVMFKIENHNDKTVSEKNNKCQLILQNNIEMTTGTFVEEITENYKRNTENEDNKYTAASRN  
 SHNLEFDGSDSSKNDTVCIHKDETDLLFTDQHNICLKLSGQFMKEGNTQIKEDLSDLTFLEVAKAQEACH  
 GNTSNKEQLTATKTEQNIKDFETSDFQTAGSKNISVAKE SFNKIVNFFDQKPEELHNFSLNSELHSDI  
 RKNKMDILSYEETDIVKHKILKESVPVGTGNQLVTFQGGQPERDEKIKEPTLLGFHTASGKKVKIAKESLD  
 KVKNL FDEKEQGTSEITSFHQWAKTLKYREACKDLELACETIEITAAPKCKEMQNSLNDKNL VSIETV  
 VPPKLLSDNLCRQ TENLKTSKSIFLKVKHENVEKETAKSPATCYTNQSPYSVIENSALAFYTCSRKTS  
 VSQTSLL EAKKWLREGIFDQPERINTADYVGNLYENNSNSTIAENDKNHLSEKQDTYLSNSSMSNSYS  
 YHSDEVYNDSGYL SKNKLD SGIEPVLKNVED

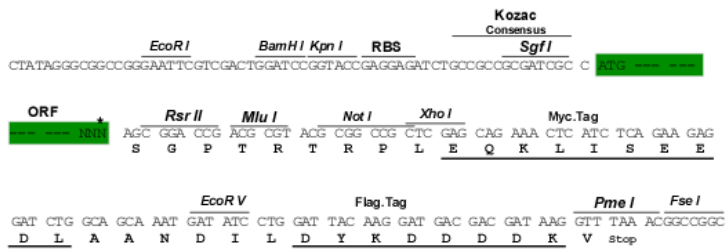
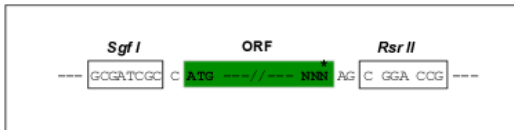
SGPTRRRLEQKLI SEEDLAANDILDYKDDDDKV

Restriction Sites:

SgfI-RsrII

Cloning Scheme:

Cloning sites used for ORF Shuttling:



\* The last codon before the Stop codon of the ORF

<b>OTI Disclaimer:</b>	The molecular sequence of this clone aligns with the gene accession number as a point of reference only. However, individual transcript sequences of the same gene can differ through naturally occurring variations (e.g. polymorphisms), each with its own valid existence. This clone is substantially in agreement with the reference, but a complete review of all prevailing variants is recommended prior to use. <a href="#">More info</a>
<b>OTI Annotation:</b>	This clone was engineered to express the complete ORF with an expression tag. Expression varies depending on the nature of the gene.
<b>Components:</b>	The ORF clone is ion-exchange column purified and shipped in a 2D barcoded Matrix tube containing 10ug of transfection-ready, dried plasmid DNA (reconstitute with 100 ul of water).
<b>Note:</b>	Plasmids are not sterile. For experiments where strict sterility is required, filtration with 0.22um filter is required.
<b>RefSeq:</b>	<a href="#">NP_000050</a>
<b>RefSeq Size:</b>	5343 bp
<b>RefSeq ORF:</b>	10257 bp
<b>Locus ID:</b>	675
<b>Cytogenetics:</b>	13q13.1
<b>Protein Families:</b>	Druggable Genome
<b>Protein Pathways:</b>	Homologous recombination, Pancreatic cancer, Pathways in cancer
<b>MW:</b>	195.9 kDa
<b>Gene Summary:</b>	Inherited mutations in BRCA1 and this gene, BRCA2, confer increased lifetime risk of developing breast or ovarian cancer. Both BRCA1 and BRCA2 are involved in maintenance of genome stability, specifically the homologous recombination pathway for double-strand DNA repair. The largest exon in both genes is exon 11, which harbors the most important and frequent mutations in breast cancer patients. The BRCA2 gene was found on chromosome 13q12.3 in human. The BRCA2 protein contains several copies of a 70 aa motif called the BRC motif, and these motifs mediate binding to the RAD51 recombinase which functions in DNA repair. BRCA2 is considered a tumor suppressor gene, as tumors with BRCA2 mutations generally exhibit loss of heterozygosity (LOH) of the wild-type allele. [provided by RefSeq, May 2020]