

Product datasheet for **RC400470**

RET (NM_020975) Human Mutant ORF Clone

Product data:

| | |
|---------------------------|--|
| Product Type: | Mutant ORF Clones |
| Product Name: | RET (NM_020975) Human Mutant ORF Clone |
| Mutation Description: | E632_T636>SS |
| Affected Codon#: | 632 |
| Affected NT#: | c.1894_1906 |
| Nucleotide Mutation: | RET Mutant (E632_T636>SS), Myc-DDK-tagged ORF clone of Homo sapiens ret proto-oncogene (RET), transcript variant 2 as transfection-ready DNA |
| Effect: | deletion |
| Symbol: | RET |
| Synonyms: | CDHF12; CDHR16; HSCR1; MEN2A; MEN2B; MTC1; PTC; RET-ELE1 |
| E. coli Selection: | Kanamycin (25 ug/mL) |
| Mammalian Cell Selection: | Neomycin |
| Vector: | pCMV6-Entry (PS100001) |
| Tag: | Myc-DDK |
| ACCN: | NM_020975 |
| ORF Size: | 3342 bp |
| Restriction Sites: | SgfI-MluI |
| ORF Nucleotide Sequence: | >RC400470 representing NM_020975 Red=Cloning site Blue=ORF Green=Tags(s) |

TTTTGTAATACGACTCACTATAGGGCGCCGGGAATTCGTCGACTGGATCCGGTACCGAGGAGATCTGCC
GCC**GCGATCGCC**

ATGGCGAAGGCGACGTCCGGTGCCGCGGGCTGCGTCTGCTGTTGCTGCTGCTGCCGCTGCTAGGCA
AAGTGGCATTGGGCTCTACTTCTCGAGGGATGCTTACTGGGAGAAGCTGTATGTGGACCAGGCGCCGG
CACGCCCTTGCTGTACGTCCATGCCCTGCGGGACGCCCTGAGGAGGTGCCAGCTTCCGCTGGCCAG
CATCTCTACGGCACGTACCGCACACGGCTGCATGAGAACAACCTGGATCTGCATCCAGGAGGACACCGGCC
TCCTCTACCTTAACCGGAGCCTGGACCATAGCTCCTGGGAGAAGCTCAGTGTCCGCAACCGCGGCTTTCC
CCTGCTACCGTCTACCTCAAGGTCTTCTGTACCCACATCCCTTCGTGAGGGCGAGTGCCAGTGGCCA
GGCTGTGCCCGGTATACTTCTCCTTCTCAACACCTCCTTTCCAGCCTGCAGCTCCCTCAAGCCCCGGG



[View online »](#)

AGCTCTGCTTCCCAGAGACAAGGCCCTCCTCCGCATTGGGAGAACCGACCCCCAGGCACCTTCCACCA
GTTCCGCCTGCTGCCTGTGCAGTTCTTGTGCCCAACATCAGCGTGGCCTACAGGCTCCTGGAGGGTGAG
GGTCTGCCCTCCGCTGCGCCCCGGACAGCCTGGAGGTGAGCACGCGCTGGGCCCTGGACCGCGAGCAGC
GGGAGAAGTACGAGCTGGTGGCCGTGTGACCCGTGCACGCCGCGCGCGAGGAGGTGGTGATGGTGCC
CTTCCCGGTGACCGTGTACGACGAGGACGACTCGGCGCCACCTTCCCGCGGGCGTGCACACCGCCAGC
GCCGTGGTGGAGTTCAGCGGAAGGAGGACACCGTGGTGGCCACGCTGCTCCCGGGGACACCTGGGCCAGCA
TACCTGCATCAGGGGAGCTGGTGGCCGATACACAAGCAGCCTGCTCCCGGGGACACCTGGGCCAGCA
GACCTTCCGGGTGGAACACTGGCCCAACGAGACCTCGGTCCAGGCCAACGGCAGCTTCGTGCGGGCGACC
GTACATGACTATAGGCTGGTTCTCAACCGGAACCTCTCCATCTCGGAGAACCGCACCATGACAGCTGGCGG
TGCTGGTCAATGACTCAGACTTCCAGGGCCAGGAGCGGGCGTCTCTTGTCTCACTTCAACGTGTCCGT
GCTGCCGGTACGCTGCACCTGCCAGTACCTACTCCCTCTCCGTGAGCAGGAGGGCTCGCCGATTTGCC
CAGATCGGAAAGTCTGTGTGAAAACTGCCAGGCATTAGTGGCATCAACGTCCAGTACAAGCTGCATT
CCTCTGGTGCCAACTGCAGCACGCTAGGGTGGTACCTCAGCCGAGGACACCTCGGGATCCTGTTTGT
GAATGACACCAAGGCCCTGCGGCGGCCAAGTGTGCCAACTTACTACATGGTGGTGGCCACCGACCAG
CAGACCTTAGGCAGGCCAGGCCAGCTGCTTGAACAGTGGAGGGTTCATATGTGGCCGAGGAGCGCG
GCTGCCCCCTGCTCTGTGAGTACGCAAGAGACGGCTGGAGTGTGAGGAGTGTGGCGGCCCTGGGCTCCCC
AACAGGCAGGTGTGAGTGGAGGCAAGGAGATGGCAAAGGGATCACAGGAACTTCTCCACCTGCTCTCCC
AGCACCAAGACCTGCCCGACGGCCACTGCGATGTTGTGGAGACCCAAGACATCAACATTTGCCCTCAGG
ACTGCCTCCGGGCGACATTGTTGGGGACACGAGCCTGGGGAGCCCCGGGGATTAAAGCTGGCTATGG
CACCTGCAACTGCTTCCCTGAGGAGGAGAAGTGCTTCTGCGAGCCGAAGACATCCAGGATCCACTGTGC
GACGTGCCCA>AGCTCGGTGATCGCAGCCGCTGTCTCTTCTCTTTCATCGTCTCGGTGCTGTGTCTG
CCTTCTGCATCCACTGCTACCACAAGTTTCCCCACAAGCCACCCATCTCCTCAGCTGAGATGACCTTCCG
GAGGCCCGCCAGGCCCTCCCGGTGAGTACTCTCTCCGGTCCCGCCCGGCCCTCGTGAGTCCATG
GAGAACCAGGTCTCCGTGGATGCCTTCAAGATCCTGGAGGATCCAAAGTGGGAATTCCTCGGAAGAACT
TGGTTCTTGGAAAACTTAGGAGAAGGCAATTTGGAAAAAGTGGTCAAGGCAACGGCCTTCCATCTGAA
AGGCAGAGCAGGGTACACCACGGTGGCCGTGAAGATGCTGAAAGAGAACGCCTCCCCGAGTGAGCTTCGA
GACCTGCTGTGAGTTCACAGTCTGAAGCAGGTCAACCACCCACATGTATCAAAATGATGGGGCT
GCAGCCAGGATGGCCCGCTCCTCCTCATCGTGGAGTACGCCAAATACGGCTCCCTGCGGGGCTTCTCCG
CGAGAGCCGAAAAGTGGGGCTGGCTACCTGGGAGTGGAGGCAGCCGCAACTCCAGCTCCCTGGACCAC
CCGGATGAGCGGGCCCTCACCATGGGCGACCTCATCTCATTTCCTGGCAGATCTCACAGGGATGCAGT
ATCTGGCCGAGATGAAGCTCGTTCATCGGGACTTGGCAGCCAGAAACATCCTGGTAGCTGAGGGCGGAA
GATGAAGATTTCCGATTTCCGGCTTGCCCGAGATGTTTATGAAGAGGATTCTACGTGAAGAGGACCCAG
GGTCGGATTCAGTAAATGGATGGCAATTTGAATCCCTTTTTGATCATATCTACACCACGCAAAGTGATG
TATGGTCTTTGGTGTCTGCTGTGGGAGATCGTGACCCTAGGGGGAAACCCCTATCCTGGGATTCCTCC
TGAGCGGCTCTTCAACCTTCTGAAGACCGGCCACCGGATGGAGAGGCCAGACAACTGCAGCGAGGAGATG
TACCGCTGATGCTGCAATGCTGGAAGCAGGAGCCGGACAAAAGGCCGGTGTGGCGGACATCAGCAAAG
ACCTGGAGAAGATGATGGTTAAGAGGAGAGACTACTTGGACCTTGGCGGTCCACTCCATCTGACTCCCT
GATTTATGACGACGGCCCTCAGAGGAGGAGACACCGCTGGTGGACTGTAAATGCCCCCTCCCTCGA
GCCCTCCCTTCCACATGGATTGAAAACAACTATGGCATGTCAGACCCGAACCTGGCCGGAGAGATG
CTGTACCACTCAGAGAGCTGATGGCACTAACACTGGGTTTCCAAGATATCCAATGATAGTGTATATGC
TAACTGGATGCTTTCACCTCAGCGGCAAAATTAATGGACACGTTTGATAGT

ACGCGTACGCGGCGCTCGAGCAGAACTCATCTCAGAAGAGGATCTGGCAGCAATGATATCCTGGATT
ACAAGGATGACGACGATAAGGTTTAA

Protein Sequence: >RC400470 representing NM_020975
Red=Cloning site Green=Tags(s)

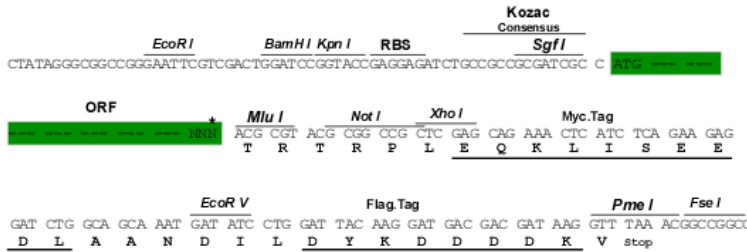
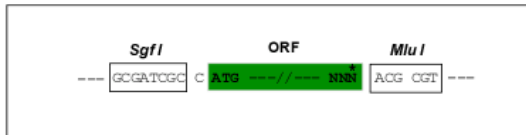
MAKATSGAAGRLLLLLLLPLLKGVALGLYFSRDAYWEKLYVDQAAGTPLLYVHALRDAPEEVPSFRLGQ
 HLYGTYRTRLHENNWICIQEDTGLLYLNRSLDHSSWEKLSVRNRGFLLTVYLVKVFLLSPTSLREGECQWP
 GCARVYFSFFNTSFPACSSSLKPRELFCFPETRPSFRIENRPPGTFHQFRLLPVQFLCPNISVAYRLLGE
 GLPFRCAPDSLEVSTRWALDREQREKVELVAVCTVHAGAREEVVMVFPVTVYDEDDSAFTFPAGVDTAS
 AVVEFKRKEDTVVATLRVFDADVVPASGELVRRYTSLLPGDTWAQQTFRVEHWPNETSVQANGSFVRAT
 VHDYRLVLNRNLSISENRTMQLAVLVNDSDFQGPAGVLLLHFNVSVLVPSLHLPSTYSLSVSRARRFA
 QIGKVCVENCQAFSGINVQYKLHSSGANCSTLGVVTS AEDTSGILFVNDTKALRRPKCAELHYMVVATDQ
 QTSRQAQAQLLVTVEGSYVAEEAGCPLSCAVSKRRLCECECGGLGSPTRCEWRQGDGKGITRNFSTCSP
 STKTCPDGHCDVVETQDINICPQDCLRGSIVGGHEPGEPRIKAGYGTNCNCFPEEEKCFCEPEDIQDPLC
 DVPXSSVIAAAVLFSFIVSVLLSAFCIHCHYKFAHKPPISSAEMTFRRPAQAFVSYSSSGARRPSLDSM
 ENQVSDAFKILEDPKWEFPRKNLVLGKTLGEGEFGKVVKATAFHLKGRAGYTTVAVKMLKENASPSSELR
 DLLSEFNVLKQVNHPIKLYGACSQDGPLLLIVEYAKYGLRGLRESRQVGPYLGSGGSRNSSSLDH
 PDERALTMGDLISFAWQISQGMQYLAEMKLVHRDLAARNILVAEGRKMKISDFGLSRDVEEDSYVKRSQ
 GRIPVKWMAIESLFDHIYTTQSDVWVSGVLLWEIVTLGPNYPGIPPERLFNLLKTGHRMERNPCSEEM
 YRLMLQCWKQEPDKRPVFADISKDLEKMMVKRRDYLDLAASTPSDSL IYDDGLSEEETPLVDCNNAPLPR
 ALPSTWIENKLYGMSDPNWPGESPVPLTRADGTNTGFPRYPNDSVYANWMLSPSAAKLMDTFDS

TRTRPLEQKLISEEDLAANDILDYKDDDDKV

Restriction Sites: SgfI-MluI

Cloning Scheme:

Cloning sites used for ORF Shutting:



* The last codon before the Stop codon of the ORF

OTI Disclaimer: The molecular sequence of this clone aligns with the gene accession number as a point of reference only. However, individual transcript sequences of the same gene can differ through naturally occurring variations (e.g. polymorphisms), each with its own valid existence. This clone is substantially in agreement with the reference, but a complete review of all prevailing variants is recommended prior to use. [More info](#)

OTI Annotation: This clone was engineered to express the complete ORF with an expression tag. Expression varies depending on the nature of the gene.

| | |
|--------------------------|---|
| Components: | The ORF clone is ion-exchange column purified and shipped in a 2D barcoded Matrix tube containing 10ug of transfection-ready, dried plasmid DNA (reconstitute with 100 ul of water). |
| RefSeq: | NP_066124 |
| RefSeq Size: | 5629 bp |
| RefSeq ORF: | 3345 bp |
| Locus ID: | 5979 |
| Cytogenetics: | 10q11.21 |
| Protein Families: | Druggable Genome, Protein Kinase, Transmembrane |
| Protein Pathways: | Endocytosis, Pathways in cancer, Thyroid cancer |
| MW: | 124 kDa |
| Gene Summary: | This gene encodes a transmembrane receptor and member of the tyrosine protein kinase family of proteins. Binding of ligands such as GDNF (glial cell-line derived neurotrophic factor) and other related proteins to the encoded receptor stimulates receptor dimerization and activation of downstream signaling pathways that play a role in cell differentiation, growth, migration and survival. The encoded receptor is important in development of the nervous system, and the development of organs and tissues derived from the neural crest. This proto-oncogene can undergo oncogenic activation through both cytogenetic rearrangement and activating point mutations. Mutations in this gene are associated with Hirschsprung disease and central hypoventilation syndrome and have been identified in patients with renal agenesis. [provided by RefSeq, Sep 2017] |