

Product datasheet for **RC400461**

RET (NM_020975) Human Mutant ORF Clone

Product data:

Product Type:	Mutant ORF Clones
Product Name:	RET (NM_020975) Human Mutant ORF Clone
Mutation Description:	C634Y
Affected Codon#:	634
Affected NT#:	c.1901
Nucleotide Mutation:	RET Mutant (C634Y), Myc-DDK-tagged ORF clone of Homo sapiens ret proto-oncogene (RET), transcript variant 2 as transfection-ready DNA
Effect:	Missense
Symbol:	RET
Synonyms:	CDHF12; CDHR16; HSCR1; MEN2A; MEN2B; MTC1; PTC; RET-ELE1
E. coli Selection:	Kanamycin (25 ug/mL)
Mammalian Cell Selection:	Neomycin
Vector:	pCMV6-Entry (PS100001)
Tag:	Myc-DDK
ACCN:	NM_020975
ORF Size:	3342 bp
Restriction Sites:	SgfI-MluI
ORF Nucleotide Sequence:	>RC400461 representing NM_020975 Red=Cloning site Blue=ORF Green=Tags(s)

TTTTGTAATACGACTCACTATAGGGCGGCCGGGAATTCGTCGACTGGATCCGGTACCGAGGAGATCTGCC
GCC**GCGATCGCC**

ATGGCGAAGGCGACGTCCGGTGCCGCGGGCTGCGTCTGCTGTTGCTGCTGCTGCCGCTGCTAGGCA
AAGTGGCATTGGGCTCTACTTCTCGAGGGATGCTTACTGGGAGAAGCTGTATGTGGACCAGGCGGCCGG
CACGCCCTTGCTGTACGTCCATGCCCTGCGGGACGCCCTGAGGAGGTGCCAGCTTCCGCTGGCCAG
CATCTCTACGGCACGTACCGCACACGGCTGCATGAGAACAACCTGGATCTGCATCCAGGAGGACACCGGCC
TCCTCTACCTTAACCGGAGCCTGGACCATAGCTCCTGGGAGAAGCTCAGTGTCCGCAACCGCGGCTTTCC
CCTGCTACCGTCTACCTCAAGGTCTTCTGTACCCACATCCCTTCGTGAGGGCGAGTGCCAGTGGCCA
GGCTGTGCCCGGTATACTTCTCCTTCTCAACACCTCCTTTCCAGCCTGCAGCTCCCTCAAGCCCCGGG



[View online »](#)

AGCTCTGCTTCCCAGAGACAAGGCCCTCCTCCGCATTCCGGGAGAACCGACCCCCAGGCACCTTCCACCA
GTTCCGCCTGCTGCCTGTGCAGTTCTTGTGCCCAACATCAGCGTGGCCTACAGGCTCCTGGAGGGTGAG
GGTCTGCCCTTCCGCTGCGCCCCGGACAGCCTGGAGGTGAGCACGCGCTGGGCCCTGGACCGCGAGCAGC
GGGAGAAGTACGAGCTGGTGGCCGTGTGACCCGTGCACGCCGCGCGCGGAGGAGTGGTGATGGTGCC
CTTCCCGGTGACCGTGTACGACGAGGACGACTCGGCGCCACCTTCCCGCGGGCGTGCACACCGCCAGC
GCCGTGGTGGAGTTCAAGCGGAAGGAGGACACCGTGGTGGCCACGCTGCTCCCGGGGACACCTGGGCCAGCA
TACCTGCATCAGGGGAGCTGGTGGCCGTTACACAAGCAGCCTGCTCCCGGGGACACCTGGGCCAGCA
GACCTTCCGGGTGGAACACTGGCCCAACGAGACCTCGGTCCAGGCCAACGGCAGCTTCGTGCGGGCGACC
GTACATGACTATAGGCTGGTTCTCAACCGGAACCTCTCCATCTCGGAGAACCGCACCATGACAGCTGGCGG
TGCTGGTCAATGACTCAGACTTCCAGGGCCAGGAGCGGGCGTCTCTTGTCTCACTTCAACGTGTCCGT
GCTGCCGGTACGCTGCACCTGCCAGTACCTACTCCCTCTCCGTGAGCAGGAGGGCTCGCCGATTTGCC
CAGATCGGAAAGTCTGTGTGAAAACTGCCAGGCATTAGTGGCATCAACGTCCAGTACAAGCTGCATT
CCTCTGGTGCCAACTGCAGCACGCTAGGGTGGTACCTCAGCCGAGGACACCTCGGGATCCTGTTTGT
GAATGACACCAAGGCCCTGCGGCGGCCAAGTGTGCCAACTTACTACATGGTGGTGGCCACCGACCAG
CAGACCTTAGGCAGGCCAGGCCAGCTGCTTGAACAGTGGAGGGTTCATATGTGGCCGAGGAGCGCG
GCTGCCCCCTGTCTGTGAGTACGCAAGAGACGGCTGGAGTGTGAGGAGTGTGGCGGCCTGGGCTCCCC
AACAGGCAGGTGTGAGTGGAGGCAAGGAGATGGCAAAGGGATCACAGGAACTTCTCACCTGCTCTCCC
AGCACCAAGACCTGCCCGACGGCCACTGCGATGTTGTGGAGACCCAAGACATCAACATTTGCCCTCAGG
ACTGCCTCCGGGCGAGCATTGTTGGGGACACGAGCCTGGGGAGCCCCGGGGATTAAAGCTGGCTATGG
CACCTGCAACTGCTTCCCTGAGGAGGAGAAGTGCTTCTGCGAGCCGAAGACATCCAGGATCCACTGTGC
GACGAGCTGTACCGCACGGTGTGCGAGCCGTGTCTCTTCTCTTTCATCGTCTCGGTGCTGTGTCTG
CCTTCTGCATCCACTGCTACCACAAGTTTCCCCACAAGCCACCCATCTCCTCAGCTGAGATGACCTTCCG
GAGGCCCGCCAGGCCCTCCCGGTGAGTACTCTCTCCGGTCCCGCCGCGCCCTCGTGAGTCCATG
GAGAACCAGGTCTCCGTGGATGCCTTCAAGATCCTGGAGGATCCAAGTGGGAATTCCTCGGAAGAACT
TGGTTCTTGGAAAACTTAGGAGAAGGCAATTTGAAAAAGTGGTCAAGGCAACGGCCTTCCATCTGAA
AGGCAGAGCAGGGTACACCACGGTGGCCGTGAAGATGCTGAAAGAGAACGCCTCCCCGAGTGAGTTCGA
GACCTGCTGTGAGTTCACAGTCTGAAGCAGGTCAACCACCCACATGTATCAAAATTTATGGGGCT
GCAGCCAGGATGGCCCGCTCCTCCTCATCGTGGAGTACGCCAAATACGGCTCCCTGCGGGGCTTCTCCG
CGAGAGCCGAAAAGTGGGGCTGGCTACCTGGGAGTGGAGGCAGCCGCAACTCCAGCTCCCTGGACCAC
CCGGATGAGCGGGCCCTCACATGGGCGACCTCATCTCATTTCCTGGCAGATCTCACAGGGATGCAGT
ATCTGGCCGAGATGAAGCTCGTTCATCGGGACTTGGCAGCCAGAAACATCCTGGTAGCTGAGGGCGGAA
GATGAAGATTTCCGATTTCCGGCTTGCCCGAGATGTTTATGAAGAGGATTCTACGTGAAGAGGACCCAG
GGTCGGATTCAGTTAAATGGATGGCAATTTGAATCCCTTTTTGATCATATCTACACCACGAAAAGTGATG
TATGGTCTTTGGTGTCTGTGTGGGAGATCGTGACCCTAGGGGGAAACCCCTATCCTGGGATTCCTCC
TGAGCGGCTCTTCAACCTTCTGAAGACCGGCCACCGGATGGAGAGGCCAGACAACTGCAGCGAGGAGATG
TACCGCTGATGCTGCAATGCTGGAAGCAGGAGCCGGACAAAAGGCCGGTGTGCGGACATCAGCAAAG
ACCTGGAGAAGATGATGGTTAAGAGGAGAGACTACTTGGACCTTGGCGGTCCACTCCATCTGACTCCCT
GATTTATGACGACGGCCTCTCAGAGGAGGAGACACCGCTGGTGGACTGTAAATGCCCCCTCCCTCGA
GCCCTCCCTTCCACATGGATTGAAAACAACTCTATGGCATGTCAGACCCGAACTGGCCCTGGAGAGAGTC
CTGTACCACTCAGAGAGCTGATGGCACTAACACTGGGTTTCCAAGATATCCAATGATAGTGTATATGC
TAACTGGATGCTTTCACCTCAGCGGCAAAATTAATGGACACGTTTGATAGT

ACGCGTACGCGGCGCTCGAGCAGAACTCATCTCAGAAGAGGATCTGGCAGCAATGATATCCTGGATT
ACAAGGATGACGACGATAAGGTTTAA

Protein Sequence: >RC400461 representing NM_020975
Red=Cloning site Green=Tags(s)

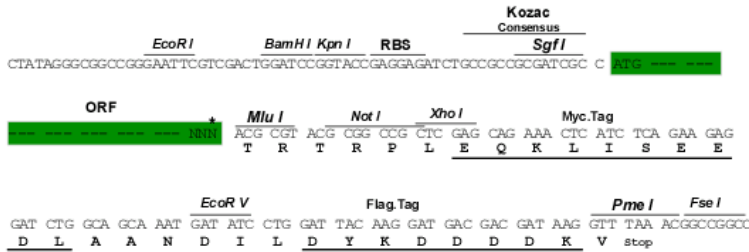
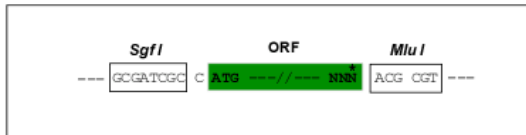
MAKATSGAAGRLLLLLLLLPLLGKVALGLYFSRDAYWEKLYVDQAAGTPLLYVHALRDAPEEVPSFRLGQ
HLYGTYRTRLHENNWICIQEDTGLLYLNRSLDHSSWEKLSVRNRGFPLLTYYLKVFLSPTSLREGEQWP
GCARVYFSFFNTSFPACSSLKPRELFCFPETRPSFRIRENRPPGTFHQFRLLPVQFLCPNISVAYRLLGE
GLPFRCAPDSLEVSTRWALDREQREKYELVAVCTVHAGAREEVVMVFPVTVYDEDDSAPTFPAGVDAS
AVVEFKRKEDTVVATLRVFDADVPASGELVRRYVSTLLPGDTWAQQTFRVEHWPNETSQANGSFVRAT
VHDYRLVLRNRLSISENRTMQLAVLVNDSDFQGGAGVLLHFNVSVLVPSLHLPSTYSLSVSRARRFA
QIGKVCVENCQAFSGINVQYKLHSSGANSTLVVTSIEDTSGILFVNDTKALRRPKCAELHYMVVATDQ
QTSRQAQAQLLVTEGSYVAEEAGCPLSCAVSKRRLECEECGGLGSPTRCEWRQDGGKIGTRNFSTCSP
STKTCPDGHCDVVETQDINICPDCLRGSIVGGHEPGEPRGIKAGYGTNCNCFPEEEKCFCEPEDIQDPLC
DELRYRTVIAAAVLFVFSIVSVLLSAFCIHCHYKFAHKPPISSAEMTFRPAQAFVSYSSSGARRPSLDSM
ENQVSDAFKILEDPKWEFPRKNLVLGKTLGEGEFGKVVKATAFHLLKGRAGYTTVAVKMLKENASPSSELR
DLLSEFNVLKQVNHPIKLYGACSDQGPLLLIVEYAKYGLRGLRESRQVGPVYLSGGSRNSSLSDH
PDERALTMGDLISFAWQISQGMQYLAEMLKVRDLAARNILVAEGRKMKISDFGLSRDVYEEDSYVKRSQ
GRIPVKWMAIESLFDHIYTTQSDVWSFGVLLWEIVTLGGNPYPGIPPERLFNLLKTGHRMERPDCSEEM
YRLMLQCWKQEPDKRPFADISKDLEKMMVKRRDYLDAASTPSDSL IYDDGLSEEETPLVDCNNAPLPR
ALPSTWIENKLYGMSDPNWPGESPVPLTRADGTNTGFPRYPNDVYANWMLSPSAAKLMDTFDS

TRTRPLEQKLISEEDLAANDILDYKDDDDKV

Restriction Sites: Sgfi-MluI

Cloning Scheme:

Cloning sites used for ORF Shutting:



* The last codon before the Stop codon of the ORF

OTI Disclaimer:

The molecular sequence of this clone aligns with the gene accession number as a point of reference only. However, individual transcript sequences of the same gene can differ through naturally occurring variations (e.g. polymorphisms), each with its own valid existence. This clone is substantially in agreement with the reference, but a complete review of all prevailing variants is recommended prior to use. [More info](#)

OTI Annotation:

This clone was engineered to express the complete ORF with an expression tag. Expression varies depending on the nature of the gene.

Components:	The ORF clone is ion-exchange column purified and shipped in a 2D barcoded Matrix tube containing 10ug of transfection-ready, dried plasmid DNA (reconstitute with 100 ul of water).
RefSeq:	NP_066124
RefSeq Size:	5629 bp
RefSeq ORF:	3345 bp
Locus ID:	5979
Cytogenetics:	10q11.21
Protein Families:	Druggable Genome, Protein Kinase, Transmembrane
Protein Pathways:	Endocytosis, Pathways in cancer, Thyroid cancer
MW:	124 kDa
Gene Summary:	This gene encodes a transmembrane receptor and member of the tyrosine protein kinase family of proteins. Binding of ligands such as GDNF (glial cell-line derived neurotrophic factor) and other related proteins to the encoded receptor stimulates receptor dimerization and activation of downstream signaling pathways that play a role in cell differentiation, growth, migration and survival. The encoded receptor is important in development of the nervous system, and the development of organs and tissues derived from the neural crest. This proto-oncogene can undergo oncogenic activation through both cytogenetic rearrangement and activating point mutations. Mutations in this gene are associated with Hirschsprung disease and central hypoventilation syndrome and have been identified in patients with renal agenesis. [provided by RefSeq, Sep 2017]