

Product datasheet for **RC400384**

PI 3 Kinase catalytic subunit alpha (PIK3CA) (NM_006218) Human Mutant ORF Clone

Product data:

Product Type:	Mutant ORF Clones
Product Name:	PI 3 Kinase catalytic subunit alpha (PIK3CA) (NM_006218) Human Mutant ORF Clone
Mutation Description:	L1001I
Affected Codon#:	1001
Affected NT#:	c.3001
Nucleotide Mutation:	PIK3CA Mutant (L1001I), Myc-DDK-tagged ORF clone of Homo sapiens phosphoinositide-3-kinase, catalytic, alpha polypeptide (PIK3CA) as transfection-ready DNA
Effect:	Missense
Symbol:	PI 3 Kinase catalytic subunit alpha
Synonyms:	CLAPO; CLOVE; CWS5; MCAP; MCM; MCMTC; p110-alpha; PI3K; PI3K-alpha
E. coli Selection:	Kanamycin (25 ug/mL)
Mammalian Cell Selection:	Neomycin
Vector:	pCMV6-Entry (PS100001)
Tag:	Myc-DDK
ACCN:	NM_006218
ORF Size:	3204 bp
Restriction Sites:	SgfI-MluI
ORF Nucleotide Sequence:	>RC400384 representing NM_006218 Red=Cloning site Blue=ORF Green=Tags(s)

TTTTGTAATACGACTCACTATAGGGCGCCGGGAATTCGTCGACTGGATCCGGTACCGAGGAGATCTGCC
GCC**GCGATCGCC**

ATGCTCCACGACCATCATCAGGTGAAGTGTGGGCATCCACTTGATGCCCCCAAGAATCCTAGTAGAAT
GTTTACTACCAAATGGAATGATAGTGACTTTAGAATGCCTCCGTGAGGCTACATTAATAACCATAAAGCA
TGAAGTATTTAAAGAAGCAAGAAAATACCCCCTCCATCAACTTCTCAAGATGAATCTTCTTACATTTTC
GTAAGTGTACTCAAGAAGCAGAAAGGGAAGATTTTTTGTGAAACAAGACGACTTTGTGACCTTCGGC
TTTTTCAACCCTTTTTAAAGTAATTGAACCAGTAGGCAACCGTGAAGAAAAGATCCTCAATCGAGAAAT
TGGTTTTGCTATCGGCATGCCAGTGTGTGAATTTGATATGGTTAAAGATCCAGAAGTACAGGACTCCGA
AGAAATATTCTGAACGTTTGTAAGAAGCTGTGGATCTTAGGGACCTCAATTCACCTCATAGTAGAGCAA



[View online »](#)

TGTATGTCTATCCTCCAATGTAGAATCTTCACCAGAATTGCCAAAGCACATATATAATAAATTAGATAA
AGGGCAAATAATAGTGGTGTCTGGGTAATAGTTTCTCCAATAATGACAAGCAGAAGTATACTCTGAAA
ATCAACCATGACTGTGTACCAGAACAAGTAATTGCTGAAGCAATCAGGAAAAAACTCGAAGTATGTTGC
TATCCTCTGAACAATAAACTCTGTGTTTTAGAATATCAGGGCAAGTATATTTTAAAAGTGTGTGGATG
TGATGAATACTTCTAGAAAAATCCTCTGAGTCAGTATAAGTATAAAGAAGCTGTATAATGCTTGGG
AGGATGCCAATTTGATGTTGATGGCTAAAGAAAAGCCTTATTCTCAACTGCCAATGGACTGTTTTACAA
TGCCATCTTATCCAGACGCATTTCCACAGCTACACCATATATGAATGGAGAAAACATCTACAAAAATCCCT
TTGGGTTATAAATAGTGCACTCAGAATAAAAAATCTTTGTGCAACCTACGTGAATGTAATATTCGAGAC
ATTGATAAGATCTATGTTCTGAACAGGTATCTACCATGGAGGAGAACCCTTATGTGACAATGTGAACACTC
AAAGAGTACCTTGTTCCAATCCCAGGTGGAATGAATGGCTGAATTATGATATATACATTCCTGATCTTCC
TCGTGCTGCTCGACTTTGCCTTCCATTTGCTCTGTTAAAGGCCGAAAGGGTGTAAAGAGGAACACTGT
CCATTGGCATGGGAAAATATAAACTGTTTTGATTACACAGACTCTAGTATCTGAAAAATGGCTTTGA
ATCTTTGGCCAGTACCTCATGGATTAGAAGATTTGCTGAACCCTATTGGTGTACTGGATCAAATCCAAA
TAAAGAACTCCATGCTTAGAGTTGGAGTTGACTGGTTCAGCAGTGTGGTAAAGTTCCAGATATGTCA
GTGATTGAAGAGCATGCCAATTTGGTCTGTATCCCGAGAAGCAGGATTTAGCTATTCACGCAGGACTGA
GTAACAGACTAGCTAGAGACAATGAATTAAGGGAAAATGACAAAGAACAGCTCAAAGCAATTTCTACACG
AGATCCTCTCTGAAATCACTGAGCAGGAGAAAAGATTTCTATGGAGTACAGACACTATTGTGTAAC
ATCCCCGAAATTTACCCAAATGCTTCTGTCTGTTAAATGGAATTCTAGAGATGAAGTAGCCAGATGT
ATTGCTTGGTAAAAGATTGGCCTCCAATCAAACCTGAACAGGCTATGGAACCTCTGGACTGTAATTACCC
AGATCCTATGGTTCGAGGTTTTGCTGTTGCGTGCTTGGAAAAATTTAACAGATGACAACTTTCTCAG
TATTTAATTCAGTAGTACAGGCTCTAAAATAGAACAATATTTGGATAACTTGCTTGTGAGATTTTAC
TGAAGAAAGCATTGACTAATCAAAGGATTTGGCCTTTTTCTTTTGGCATTAAAACTGAGATGCACAA
TAAACAGTTAGCCAGAGGTTTTGGCCTGTTTTGGAGTCTTATGTCGTGCATGTGGATGATTTTGAAG
CACCTGAATAGGCAAGTCGAGGCAATGAAAAAGCTTAACCTAACTGACATTCTCAAACAGGAGAAGA
AGGATGAAACACAAAAGGTACAGATGAAGTTTTAGTTGAGCAATGAGGCGACCAGATTTTATGGATGC
TCTACAGGGCTTTCTGTCTCTCTAAACCCTGCTCATCAACTAGGAAAACCTCAGGCTTGAAGAGTGTGCA
ATTATGTCCTCTGCAAAAAGGCCACTGTGGTTGAATTGGGAGAACCCAGACATCATGTCAGAGTTACTGT
TTCAGAACAAATGAGATCATCTTTAAAAATGGGGATGATTTACGGCAAGATATGCTAACACTTCAAATAT
TCGATTTATGAAAAATCTGGCAAAAATCAAGGCTTGATCTTCGAATGTTACCTTATGGTTGTCTGTCA
ATCGGTGACTGTGTGGGACTTATTGAGGTGGTGCGAAATCTCACACTATTATGCAAATTCAGTGCAAAG
GCGGCTTGAAAGGTGCACTGCAGTTCAACAGCCACACACTACATCAGTGGCTCAAAGACAAGAACAAGG
AGAAATATATGATGCAGCCATTGACCTGTTTACAGGTTTATGTGCTGGATACTGTGTAGCTACCTTCATT
TTGGGAATTTGGAGATCGTCACAATAGTAACATCATGGTGAAGACGATGGACAACCTGTTTCATATAGATT
TTGGACTTTTTGGATCACAAGAAGAAAAATTTGGTTATAAACGAGAACGTGTGCCATTTGTTTTGAC
ACAGGATTTCTTAATAGTGATTAGTAAAGGAGCCCAAGAATGCACAAAGACAAGAGAATTTGAGAGGTTT
CAGGAGATGTGTTACAAGGCTTATCTAGCTATTCGACAGCATGCCAATCTCTTCATAAATATTTTCTCAA
TGATGCTTGGCTCTGGAATGCCAGAATACTTCTTTGATGACATTGCATACATTGAAAGACCCTAGC
CTTAGATAAACTGAGCAAGAGGCTTTGGAGTATTTTATGAAACAAATGAATGATGCACATCATGGTGGC
TGGACAACAAAAATGGATTGGATCTTCCACACAATTAACAGCATGCATTGAAC

ACGCGTACGCGGCCGCTCGAGCAGAACTCATCTCAGAAGAGGATCTGGCAGCAAATGATATCCTGGATT
ACAAGGATGACGACGATAAGGTTTAA

Protein Sequence: >RC400384 representing NM_006218
 Red=Cloning site Green=Tags(s)

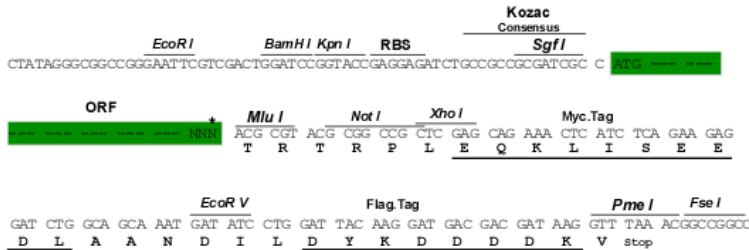
MPPRPSSGELWGIHLMPPRILVECLLPNGMIVTLECLREATLITIKHELKFEARKYPLHQLLQDESSYIF
 VSVTQEAEREEFFDETRRLCDLRLFQPFLKVIIEPVGNREKILNREIGFAIGMPVCEFDVMKDPEVQDFR
 RNILNVCKEAVDLRDLNSPHSRAMYVYPPNVESSPELPHKIYNKLDKGQIIVVIWVIVSPNNDKQKYTLK
 INHDCVPEQVIAEAIRKKTRSMLLSSEQLKLCVLEYQGYILKVCGCDEYFLEKYPLSQYKYIRSCIMLG
 RMPNLMLMAKESLYSQLPMDCTMPSYSRRISTATPYMNGETSTKSLWVINSALRIKILCATYVNVNIRD
 IDKIYVRTGIYHGGEPLCDNVNTQRPVCSNPRWNEWLNVDIYIPDLPRAARLCLISCSVKGRKGAKEEHC
 PLAWGNINLFDYDTLVSGKMALNLWVPVHGLEDLLNPIGVTGSNPNKETPCLELEFDWFSVVKFPDMS
 VIEEHANWSVSREAGFSYSHAGLSNRLARDNELRENDKEQLKAISTRDPLSEITEQEKFWSHRHYCVT
 IPEILPKLLL SVKWNRSRDEVAQMYCLVKDWPPIKPEQAMELLDCNYPDPMVRGFVAVRCLEKYL TDDKLSQ
 YLIQLVQVLKYEQYLDNLLVRFLLKKALTNQRIGHFFFWHLKSEMHNKTVSQRFGLLLESYCRACGMYLK
 HLNQRQVEAMEKLINLTDILKQEKKDETQKVQMKFLVEQMRRPDFMDALQGFLSPLNPAHQLGNLRLIECR
 IMSSAKRPLWLNWENPDIMSELLFQNNIIFKNGDDLQDMLTLQIIRIMENIWQNQGLDLRMLPYGCLS
 IGDCVGLIEVVRNSHTIMQIQCKGGLK GALQFNSTLHQWLKDKNKGEIYDAAIDLFTRSAGYCVATFI
 LGIGDRHNSNIMVKDDGQLFHIDFGHFLDHKKKFGYKRERVPFVLTQDFLIVISKGAQECTKTREPERF
 QEMCYKAYLAIRQHANLFINIFSMMLGSGMPELQSFDDIAYIRKTLALDKTEQEALEYFMQMNDAAHHGG
 WTTKMDWIFHTIKQHALN

TRTRPLEQKLISEEDLAANDILDYKDDDDKV

Restriction Sites: SgfI-MluI

Cloning Scheme:

Cloning sites used for ORF Shutting:



* The last codon before the Stop codon of the ORF

OTI Disclaimer:	Due to the inherent nature of this plasmid, standard methods to replicate additional amounts of DNA in E. coli are highly likely to result in mutations and/or rearrangements. Therefore, OriGene does not guarantee the capability to replicate this plasmid DNA. Additional amounts of DNA can be purchased from OriGene with batch-specific, full-sequence verification at a reduced cost. Please contact our customer care team at custsupport@origene.com or by calling 301.340.3188 option 3 for pricing and delivery.
	The molecular sequence of this clone aligns with the gene accession number as a point of reference only. However, individual transcript sequences of the same gene can differ through naturally occurring variations (e.g. polymorphisms), each with its own valid existence. This clone is substantially in agreement with the reference, but a complete review of all prevailing variants is recommended prior to use. More info
OTI Annotation:	This clone was engineered to express the complete ORF with an expression tag. Expression varies depending on the nature of the gene.
Components:	The ORF clone is ion-exchange column purified and shipped in a 2D barcoded Matrix tube containing 10ug of transfection-ready, dried plasmid DNA (reconstitute with 100 ul of water).
RefSeq:	NP_006209
RefSeq Size:	3724 bp
RefSeq ORF:	3207 bp
Locus ID:	5290
Cytogenetics:	3q26.32
Domains:	PI3K_rbd, PI3_PI4_kinase, PI3Ka, PI3K_C2, PI3K_p85B
Protein Families:	Druggable Genome
Protein Pathways:	Acute myeloid leukemia, Apoptosis, B cell receptor signaling pathway, Chemokine signaling pathway, Chronic myeloid leukemia, Colorectal cancer, Endometrial cancer, ErbB signaling pathway, Fc epsilon RI signaling pathway, Fc gamma R-mediated phagocytosis, Focal adhesion, Glioma, Inositol phosphate metabolism, Insulin signaling pathway, Jak-STAT signaling pathway, Leukocyte transendothelial migration, Melanoma, mTOR signaling pathway, Natural killer cell mediated cytotoxicity, Neurotrophin signaling pathway, Non-small cell lung cancer, Pancreatic cancer, Pathways in cancer, Phosphatidylinositol signaling system, Progesterone-mediated oocyte maturation, Prostate cancer, Regulation of actin cytoskeleton, Renal cell carcinoma, Small cell lung cancer, T cell receptor signaling pathway, Toll-like receptor signaling pathway, Type II diabetes mellitus, VEGF signaling pathway
MW:	124 kDa
Gene Summary:	Phosphatidylinositol 3-kinase is composed of an 85 kDa regulatory subunit and a 110 kDa catalytic subunit. The protein encoded by this gene represents the catalytic subunit, which uses ATP to phosphorylate PtdIns, PtdIns4P and PtdIns(4,5)P2. This gene has been found to be oncogenic and has been implicated in cervical cancers. A pseudogene of this gene has been defined on chromosome 22. [provided by RefSeq, Apr 2016]