

Product datasheet for **RC400317**

EGFR (NM_005228) Human Mutant ORF Clone

Product data:

Product Type:	Mutant ORF Clones
Product Name:	EGFR (NM_005228) Human Mutant ORF Clone
Mutation Description:	G598V
Affected Codon#:	598
Affected NT#:	c.1793
Nucleotide Mutation:	EGFR Mutant (G598V), Myc-DDK-tagged ORF clone of Homo sapiens epidermal growth factor receptor (EGFR), transcript variant 1 as transfection-ready DNA
Effect:	Missense
Symbol:	EGFR
Synonyms:	ERBB; ERBB1; ERRP; HER1; mENA; NISBD2; PIG61
E. coli Selection:	Kanamycin (25 ug/mL)
Mammalian Cell Selection:	Neomycin
Vector:	pCMV6-Entry (PS100001)
Tag:	Myc-DDK
ACCN:	NM_005228
ORF Size:	3630 bp
Restriction Sites:	SgfI-MluI
ORF Nucleotide Sequence:	>RC400317 representing NM_005228 Red=Cloning site Blue=ORF Green=Tags(s)

TTTTGTAATACGACTCACTATAGGGCGGCCGGGAATTCGTCGACTGGATCCGGTACCGAGGAGATCTGCC
GCC**GCGATCGCC**

ATGCGACCCTCCGGGACGGCCGGGCAGCGCTCCTGGCGTCTGGCTGCGCTCTGCCCGCGAGTCGGG
CTCTGGAGGAAAAGAAAGTTTGCCAAGGCACGAGTAACAAGCTCACGCAGTTGGGCACCTTTGAAGATCA
TTTTCTCAGCCTCCAGAGGATGTTCAATAACTGTGAGGTGGTCTTGGGAATTTGGAAATTACCTATGTG
CAGAGGAATTATGATCTTTCCTTCTAAAGACCATCCAGGAGGTGGCTGGTTATGTCTCATTGCCCTCA
ACACAGTGGAGCGAATTCCTTTGGAAAACCTGCAGATCATCAGAGGAAATATGTACTACGAAAATTCCTA
TGCCTTAGCAGTCTTATCTAACTATGATGCAAAATAAACCGGACTGAAGGAGCTGCCCATGAGAAATTA
CAGGAAATCCTGCATGGCGCCGTGCGGTTTCAGCAACAACCTGCCCTGTGCAACGTGGAGAGCATCCAGT



[View online »](#)

GGCGGGACATAGTCAGCAGTGACTTTCTCAGCAACATGTCGATGGACTTCCAGAACCACCTGGGCAGCTG
CCAAAAGTGTGATCCAAGCTGTCCCAATGGGAGCTGCTGGGGTGCAGGAGAGGAGAACTGCCAGAACTG
ACCAAAATCATCTGTGCCAGCAGTGCTCCGGGCGCTGCCGTGGCAAGTCCCCAGTGACTGCTGCCACA
ACCAGTGTGCTGCAGGCTGCACAGGCCCCGGGAGAGCGACTGCCTGGTCTGCCGCAAAATCCGAGACGA
AGCCACGTGCAAGGACACCTGCCCCCACTCATGCTCTACAACCCACCACGTACCAGATGGATGTGAAC
CCCAGGGCAAATACAGCTTTGGTGCCACCTGCGTGAAGAAGTGTCCCGTAATTATGTGGTGACAGATC
ACGGCTCGTGCCTCCGACCTGTGGGGCCGACGCTATGAGATGGAGGAAGACGGCGTCCGCAAGTGTA
GAAGTGCGAAGGGCCTTGCCGCAAAGTGTGAACGGAATAGGTATTGGTGAATTTAAAGACTCACTCTCC
ATAAATGCTACGAATATTAACAACCTTAAAAACTGCACCTCCATCAGTGGCGATCTCCACATCCTGCCGG
TGGCATTTAGGGGTGACTCCTTCACACATACTCCTCTGGATCCACAGGAACTGGATATTCTGAAAAC
CGTAAAGGAAATCACAGGGTTTTGCTGATTACGGCTTGGCCTGAAAACAGGACGGACCTCCATGCCTTT
GAGAACCTAGAAATCATACGCGGCAGGACCAAGCAACATGGTCAGTTTTCTCTTGACATCGTCAGCCTGA
ACATAACATCCTTGGGATTACGCTCCCTCAAGGAGATAAGTATGGAGATGTGATAATTTAGGAAACAA
AAATTTGTGCTATGCAAATAACAATAAAGTGAAAAAACTGTTTGGGACCTCCGGTCAGAAAACAAAATT
ATAAGCAACAGAGGTGAAAACAGCTGCAAGGCCACAGGCCAGGTCTGCCATGCCTTGTGCTCCCCGAGG
GCTGCTGGGGCCCGAGCCAGGGACTGCGTCTTTGCCGGAATGTCAGCCGAGGAGGGAATGCGTGGA
CAAGTGAACCTTCTGGAGGGTGAAGCAAGGGAGTTTGTGGAGAACTCTGAGTGCATACAGTGCCACCCA
GAGTGCCTGCCTCAGGCCATGAACATCACCTGCACAGGACGGGGACCAGACAACCTGTATCCAGTGTGCC
ACTACATTGACGGCCCCACTGCGTCAAGACCTGCCCGCAGTAGTCAATGGGAGAAAACAACACCTGGT
CTGGAAGTACGCGACGCGGCCATGTGTGCCACCTGTGCCATCCAACTGCACCTACGGATGACTGGG
CCAGGTCTTGAAGGCTGTCAACGAATGGGCCTAAGATCCCGTCCATCGCCACTGGGATGGTGGGGGCC
TCCTCTTGCTGCTGGTGGTGGCCTGGGGATCGGCCTTTCATGCGAAGGCGCCACATCGTTTCGGAAGCG
CAGCTCGCGAGGCTGCTGCAGGAGAGGGAGCTTGTGGAGCCTTTACACCCAGTGGAGGAACTCCCAAC
CAAGCTCTCTTGAAGGATCTTGAAGGAACTGAATTCAAAAAGATCAAAGTGTGGGCTCCGGTGCCTTCG
GCACGGTGTATAAGGGACTCTGGATCCCAGAAGGTGAGAAAGTTAAAATTCCTCGCTATCAAGGAATT
AAGAGAAGCAACATCTCCGAAAGCCAACAAGGAAATCCTCGATGAAGCCTACGTGATGGCCAGCGTGGAC
AACCCCAACGTGTGCCGCTGTGGGCATCTGCCTCACCTCCACCGTGCAGTCAACACGAGCTCATGC
CCTTCGGCTGCCTCCTGGACTATGTCCGGGAACACAAAGACAATATTGGCTCCAGTACCTGCTCAACTG
GTGTGTGCAGATCGCAAAGGCATGAACACTTGGAGGACCGTGCCTTGGTGCACCGCAGCTGGCAGCC
AGGAACGTACTGGTAAAACACCGCAGCATGTCAAGATCACAGATTTTGGGCTGGCCAACTGCTGGGTG
CGGAAGAGAAAGAATACCATGCAGAAGGAGGCAAAGTGCCTATCAAGTGGATGGCATTGGATCAATTTT
ACACAGAATCTATACCCACCAGAGTGTGTCTGGAGCTACGGGGTACCGTTTGGGAGTTGATGACCTTT
GGATCCAAGCCATATGACGGAATCCCTGCCAGCGAGATCTCTCCATCCTGGAGAAAGGAGAACGCCCTCC
CTCAGCCACCCATATGTACCATCGATGTCTACATGATCATGGTCAAGTGTGGATGATAGACGCAGATAG
TCGCCCAAAGTCCGTGAGTTGATCATCGAATTTCTCCAAAATGGCCCCGAGACCCCAAGCGCTACCTTGT
ATTCAGGGGGATGAAAGAATGCATTTGCCAAGTCTACAGACTCCAACCTTCTACCGTGCCTGATGGATG
AAGAAGACATGGACGACGTGGTGGATGCCGACGAGTACCTCATCCACAGCAGGGCTTCTCAGCAGCCC
CTCCACGTACGGACTCCCCTCCTGAGCTCTCTGAGTGCAACCAGCAACAATTCACCGTGGCTTGCATT
GATAGAAATGGGCTGCAAAGCTGTCCCATCAAGGAAGACAGCTTCTTGCAGGATACAGCTCAGACCCCA
CAGGCGCCTTGACTGAGGACAGCATAGACGACACCTTCTCCAGTGCCTGAATACATAAACCAGTCCGT
TCCAAAAGGCCCGCTGGCTCTGTGCAGAATCCTGTCTATCACAATCAGCCTCTGAACCCCGCGCCAGC
AGAGACCCACACTACCAGGACCCCAAGCAGTGCAGTGGGCAACCCCGAGTATCTAACACTGTCCAGC
CCACCTGTGTCAACAGCACATTCGACAGCCCTGCCACTGGGCCAGAAAAGCAGCCACCAAAATAGCCT
GGACAACCTGACTACCAGCAGGACTTCTTTCCAAAGGAAGCCAAGCCAATGGCATCTTAAGGGCTCC
ACAGCTGAAAATGCAGAATACCTAAGGGTGCGCCACAAAGCAGTGAATTTATTGGAGCA

ACGCGTACGCGGCGCTCGAGCAGAACTCATCTCAGAAGAGGATCTGGCAGCAATGATATCCTGGATT
ACAAGGATGACGACGATAAGGTTTAA

Protein Sequence: >RC400317 representing NM_005228
 Red=Cloning site Green=Tags(s)

MRPSGTAGAALLALLAALCPASRALEEKKVCQGTSNKL TQLGTFEDHFLSLQRMFNCEVVLGNLEITYY
 QRNYDL SFLKTIQEVAGYVLI ALNTVERIPL ENLQIIRGNMYYENSYALAVLSNYDANKTGLKELPMRNL
 QEILHGAVRFSNNPALCNVESIQWRDIVSSDFLSNM SMDFQNH LGSCQKCDPSCPNGSCWGAGEENCQKL
 TKIICAQQCSGRCRGKSPSDCCHNQCAAGCTGPRESDCLVCRKFRDEATCKDTCPLML YNPPTYQMDVN
 PEGKYSFGATCVKKCP RNYVVDH GSCV RACGADSYEMEEDGVRKCKKCEGPCRKVCNGIGIGEFKDSLS
 INATNIKHFKNCTISGDLHILPVAFRGDSFHTHTPPLDPQELDILKTVKEITGFLLIQAWPENRTDLHAF
 ENLEIIRGR TKQHGFSLAVVSLNITSLGLRSLKEISDGDV IISGNKNLCYANTINWKKLFGTSGQKTKI
 ISNRGENSCKATGQVCHALCSPEGCWGP EPRDCVSCRNVSRGECVDKCNLLEGEPPREFVENSECIQCHP
 ECLPQAMNITCTGRGPDNCIQCAHYIDGPHCVKTCPAVVMGENNTLVWKYADAGHVCHLCHPNCTYGCTG
 PGLEGCPTNGPKIPSIATGMV GALLLLLVVALGIGLFMRRRHI VRKRTLRRLLQERELVEPLTPSGEAPN
 QALLRILKETEFKKIKVLGSGAFGTVYKGLWIPEGEKVKIPVAIKELREATSPKANKEILDEAYVMASVD
 NPHVCRLLGICLTSTVQLITQLMPFGCLLDYVREHKDNI GSQYLLNWCVQIAKGMNYLED RRLVHRDLAA
 RNVLVKTPQHVKITDFGLAKLLGAEKEYHAEGKVP I KWMAL ESILHRIYTHQSDVWSYGVTVWELMTF
 GSKPYDGPASEISSILEKGERLPQPPICTIDVYIMVKCWMIDADSRPKFRELII EFSKMARDPQRYLV
 IQGDERMHLPSPTDSNFYRALMDEEDMDVDVDADEYLIPQQGFFSSPSTSRTPLLSLSATSNNSTVACI
 DRNGLQSCPIKEDSFLQRYSSDPTGALTEDSIDD TFLPVEYINQSVPKRPAGSVQNPVYHNQPLNPAPS
 RDPHYQDPHSTAVGNPEYLVNTVQPTCVNSTFD SPAHWAQK GSHQISLDNPDYQQDFPFKEAKPNGIFKGS
 TAENAEYLRVAPQSSEFIGA

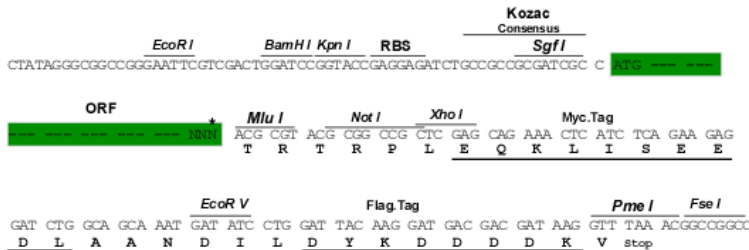
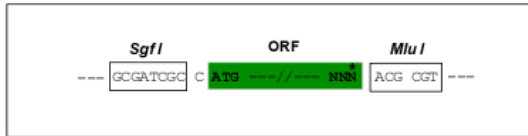
TRTRPLEQKLISEEDLAANDILDYKDDDDKV

Restriction Sites:

SgfI-MluI

Cloning Scheme:

Cloning sites used for ORF Shuttling:



* The last codon before the Stop codon of the ORF

OTI Disclaimer:	<p>Due to the inherent nature of this plasmid, standard methods to replicate additional amounts of DNA in E. coli are highly likely to result in mutations and/or rearrangements. Therefore, OriGene does not guarantee the capability to replicate this plasmid DNA. Additional amounts of DNA can be purchased from OriGene with batch-specific, full-sequence verification at a reduced cost. Please contact our customer care team at custsupport@origene.com or by calling 301.340.3188 option 3 for pricing and delivery.</p> <p>The molecular sequence of this clone aligns with the gene accession number as a point of reference only. However, individual transcript sequences of the same gene can differ through naturally occurring variations (e.g. polymorphisms), each with its own valid existence. This clone is substantially in agreement with the reference, but a complete review of all prevailing variants is recommended prior to use. More info</p>
OTI Annotation:	This clone was engineered to express the complete ORF with an expression tag. Expression varies depending on the nature of the gene.
Components:	The ORF clone is ion-exchange column purified and shipped in a 2D barcoded Matrix tube containing 10ug of transfection-ready, dried plasmid DNA (reconstitute with 100 ul of water).
RefSeq:	NP_005219
RefSeq Size:	5616 bp
RefSeq ORF:	3633 bp
Locus ID:	1956
Cytogenetics:	7p11.2
Domains:	Recep_L_domain, pkinase, TyrKc, S_TKc, Furin-like, FU
Protein Families:	Adult stem cells, Cancer stem cells, Druggable Genome, ES Cell Differentiation/IPS, Protein Kinase, Secreted Protein, Stem cell relevant signaling - JAK/STAT signaling pathway, Transmembrane
Protein Pathways:	Adherens junction, Bladder cancer, Calcium signaling pathway, Colorectal cancer, Cytokine-cytokine receptor interaction, Dorso-ventral axis formation, Endocytosis, Endometrial cancer, Epithelial cell signaling in Helicobacter pylori infection, ErbB signaling pathway, Focal adhesion, Gap junction, Glioma, GnRH signaling pathway, MAPK signaling pathway, Melanoma, Non-small cell lung cancer, Pancreatic cancer, Pathways in cancer, Prostate cancer, Regulation of actin cytoskeleton
MW:	134 kDa

Gene Summary:

The protein encoded by this gene is a transmembrane glycoprotein that is a member of the protein kinase superfamily. This protein is a receptor for members of the epidermal growth factor family. EGFR is a cell surface protein that binds to epidermal growth factor, thus inducing receptor dimerization and tyrosine autophosphorylation leading to cell proliferation. Mutations in this gene are associated with lung cancer. EGFR is a component of the cytokine storm which contributes to a severe form of Coronavirus Disease 2019 (COVID-19) resulting from infection with severe acute respiratory syndrome coronavirus-2 (SARS-CoV-2). [provided by RefSeq, Jul 2020]