

Product datasheet for **RC400311**

EGFR (NM_005228) Human Mutant ORF Clone

Product data:

Product Type:	Mutant ORF Clones
Product Name:	EGFR (NM_005228) Human Mutant ORF Clone
Mutation Description:	V769M
Affected Codon#:	769
Affected NT#:	c.2305
Nucleotide Mutation:	EGFR Mutant (V769M), Myc-DDK-tagged ORF clone of Homo sapiens epidermal growth factor receptor (EGFR), transcript variant 1 as transfection-ready DNA
Effect:	Missense
Symbol:	EGFR
Synonyms:	ERBB; ERBB1; ERRP; HER1; mENA; NISBD2; PIG61
E. coli Selection:	Kanamycin (25 ug/mL)
Mammalian Cell Selection:	Neomycin
Vector:	pCMV6-Entry (PS100001)
Tag:	Myc-DDK
ACCN:	NM_005228
ORF Size:	3630 bp
Restriction Sites:	SgfI-MluI
ORF Nucleotide Sequence:	>RC400311 representing NM_005228 Red=Cloning site Blue=ORF Green=Tags(s)

TTTTGTAATACGACTCACTATAGGGCGGCCGGGAATTCGTCGACTGGATCCGGTACCGAGGAGATCTGCC
GCC**GCGATCGCC**

ATGCGACCCTCCGGGACGGCCGGGCAGCGCTCCTGGCGTCTGGCTGCGCTCTGCCCGCGAGTCGGG
CTCTGGAGGAAAAGAAAGTTTGCCAAGGCACGAGTAACAAGCTCACGCAGTTGGGCACCTTTGAAGATCA
TTTTCTCAGCCTCCAGAGGATGTTCAATAACTGTGAGGTGGTCTTGGGAATTTGGAAATTACCTATGTG
CAGAGGAATTATGATCTTTCCTTCTTAAAGACCATCCAGGAGGTGGCTGGTTATGTCTCATTGCCCTCA
ACACAGTGGAGCGAATTCCTTTGGAAAACCTGCAGATCATCAGAGGAAATATGTACTACGAAAATTCCTA
TGCCTTAGCAGTCTTATCTAACTATGATGCAAAATAAACCGGACTGAAGGAGCTGCCCATGAGAAATTA
CAGGAAATCCTGCATGGCGCCGTGCGGTTCCAGCAACAACCTGCCTGTGCAACGTGGAGAGCATCCAGT



[View online »](#)

GGCGGGACATAGTCAGCAGTGACTTTCTCAGCAACATGTCGATGGACTTCCAGAACCACCTGGGCAGCTG
CCAAAAGTGTGATCCAAGCTGTCCCAATGGGAGCTGCTGGGGTGCAGGAGAGGAGAACTGCCAGAACTG
ACCAAAATCATCTGTGCCAGCAGTGCTCCGGGCGCTGCCGTGGCAAGTCCCCAGTGACTGCTGCCACA
ACCAGTGTGCTGCAGGCTGCACAGGCCCCCGGGAGAGCGACTGCCTGGTCTGCCGCAAAATCCGAGACGA
AGCCACGTGCAAGGACACCTGCCCCCACTCATGTCTACAACCCACCACGTACCAGATGGATGTGAAC
CCCGAGGGCAAATACAGCTTTGGTGCCACCTGCGTGAAGAAGTGTCCCGTAATTATGTGGTGACAGATC
ACGGCTCGTGCCTCCGAGCCTGTGGGGCCGACGCTATGAGATGGAGGAAGACGGCGTCCGCAAGTGTAA
GAAGTGCGAAGGGCCTTGCCGCAAAGTGTGAACGGAATAGGTATTGGTGAATTTAAAGACTCACTCTCC
ATAAATGCTACGAATATTAACAACCTTCAAAAACCTGCACCTCCATCAGTGGCGATCTCCACATCCTGCCGG
TGGCATTTAGGGGTGACTCCTTCACACATACTCCTCTGGATCCACAGGAACTGGATATTCTGAAAAC
CGTAAAGGAAATCACAGGGTTTTTGTGATTACGGCTTGGCCTGAAAACAGGACGGACCTCCATGCCTTT
GAGAACCTAGAAATCATACGCGGCAGGACCAAGCAACATGGTCAGTTTTCTCTTGACATCGTCAGCCTGA
ACATAACATCCTTGGGATTACGCTCCCTCAAGGAGATAAGTGTGGAGATGTGATAATTTAGGAAACAA
AAATTTGTGCTATGCAAATAACAATAAAGTGGAAAAACTGTTTGGGACCTCCGGTCAGAAAACAAAATT
ATAAGCAACAGAGGTGAAAACAGCTGCAAGGCCACAGGCCAGGTCTGCCATGCCTTGTGCTCCCGGAGG
GCTGCTGGGGCCCGGAGCCAGGGACTGCGTCTTTGCCGGAATGTCAGCCGAGGAGGGAATGCGTGGA
CAAGTGAACCTTCTGGAGGGTGAAGCAAGGGAGTTTGTGGAGAACTCTGAGTGCATACAGTGCCACCCA
GAGTGCCTGCCTCAGGCCATGAACATCACCTGCACAGGACGGGGACCAGACAACCTGTATCCAGTGTGCC
ACTACATTGACGGCCCCACTGCGTCAAGACCTGCCCGCAGGAGTCAAGGAGAAAACAACACCTGGT
CTGGAAGTACGCGAGCGCCGCCATGTGTGCCACCTGTGCCATCCAACTGCACCTACGGATGACTGGG
CCAGGTCTTGAAGGCTGTCAACGAATGGGCCTAAGATCCCGTCCATCGCCACTGGGATGGTGGGGGCC
TCCTCTTGCTGCTGGTGGTGGCCCTGGGGATCGGCCTTTCATGCGAAGGCGCCACATCGTTGGAAGCG
CAGCTGCGGAGGCTGCTGCAGGAGAGGAGCTTGTGGAGCCTTTACACCCAGTGGAGGAACTCCCAAC
CAAGCTCTCTTGAAGGATCTTGAAGGAACTGAATTCAAAAGATCAAAGTGTGGGCTCCGGTGCCTTCCG
GCACGGTGTATAAGGGACTCTGGATCCCAGAAGGTGAGAAAGTTAAAATTCCTCGCTATCAAGGAATT
AAGAGAAGCAACATCTCCGAAAGCCAACAAGGAAATCCTCGATGAAGCCTACGTGATGGCCAGCATGGAC
AACCCCAACGTGTGCCGCTGTGGGCATCTGCCTCACCTCCACCGTGCAGTCAACAGCAGCTCATGC
CCTTCCGGTGCCTCCTGGACTATGTCCGGGAACACAAAGACAATATTGGCTCCAGTACCTGCTCAACTG
GTGTGTGCAGATCGCAAAGGCATGAACACTTGGAGGACCGTGCCTTGGTGCACCGCAGCTGGCAGCC
AGGAACGTACTGGTAAAACACCGCAGCATGTCAAGATCACAGATTTTGGGCTGGCCAACTGCTGGGTG
CGGAAGAGAAAGAAATACCATGCAGAAGGAGGCAAAGTGCCTATCAAGTGGATGGCATTGGATCAATTTT
ACACAGAATCTATACCCACCAGAGTGTGTCTGGAGCTACGGGGTACCGTTTGGGAGTTGATGACCTTT
GGATCCAAGCCATATGACGGAATCCCTGCCAGCGAGATCTCCTCCATCCTGGAGAAAGGAGAACGCCCTCC
CTCAGCCACCCATATGTACCATCGATGTCTACATGATCATGGTCAAGTGTGGATGATAGACGCAGATAG
TCGCCCAAAGTCCGTGAGTTGATCATCGAATTTCTCAAAAATGGCCCGAGACCCCGAGCGCTACCTTGT
ATTCAGGGGGATGAAAGAATGCATTTGCCAAGTCTACAGACTCCAATTTCTACCGTGCCTGATGGATG
AAGAAGACATGGACGACGTGGTGGATGCCGACGAGTACCTCATCCACAGCAGGGCTTCTCAGCAGCCC
CTCCACGTACGGACTCCCTCCTGAGCTCTCTGAGTGAACACAGCAACAATTCACCGTGGCTTGCATT
GATAGAAATGGGCTGCAAAGCTGTCCCATCAAGGAAGACAGCTTCTTGCAGCGATACAGCTCAGACCCCA
CAGGCGCTTGAAGTGCAGGACAGCATAGACGACACCTTCCCTCCAGTGCCTGAATACATAAACCAGTCCGT
TCCCAAAGGCCCGCTGGCTCTGTGCAGAACTCTGTCTATCACAATCAGCCTCTGAACCCCGCGCCAGC
AGAGACCCACACTACCAGGACCCCCACAGCACTGCAGTGGGCAACCCCGAGTATCTAACACTGTCCAGC
CCACCTGTGTCAACAGCACATTCGACAGCCCTGCCACTGGGCCAGAAAGGCAGCCACCAAATAGCCT
GGACAACCTGACTACCAGCAGGACTTCTTTCCAAAGGAAGCCAAGCCAATGGCATCTTAAGGGCTCC
ACAGCTGAAAATGCAGAATACCTAAGGGTGCGCCACAAAGCAGTGAATTTATTGGAGCA

ACGCGTACGCGGCGCTCGAGCAGAACTCATCTCAGAAGAGGATCTGGCAGCAATGATATCCTGGATT
ACAAGGATGACGACGATAAAGTTTAA

Protein Sequence: >RC400311 representing NM_005228
 Red=Cloning site Green=Tags(s)

MRPSGTAGAALLALLAALCPASRALEEKKVCQGTSNKL TQLGTFEDHFLSLQRMFNCEVVLGNLEITYV
 QRNYDL SFLKTIQEVAGYVLI ALNTVERIPL ENLQIIRGNMYE NSYALAVLSNYDANKTGLKELPMRNL
 QEILHGAVRFSNNPALCNVESIQWRDIVSSDFLSNM SMDFQNH LGSCQKCDPSCPNGSCWGAGEENCQKL
 TKIICAQQCSGRCRGKSPSDCCHNQCAAGCTGPRES DCLVCRKFRDEATCKDTCPLML YNPPTYQMDVN
 PEGKYSFGATCVKKCP RNYVVDH GSCVRACGADSYEMEEDGVRKCKKCEGPCRKVCNGIGIGEFKDSLS
 INATNIKHFKNCTISGDLHILPVAFRGDSFHTHTPPLDPQELDILKTVKEITGFLLIQAWPENRTDLHAF
 ENLEIIRGR TKQHGFSLAVVSLNITSLGLRSLKEISDGDV IISGNKLCYANTINWKKLFGTSGQKTKI
 ISNRGENSCKATGQVCHALCSPEGCWGPEPRDCVSCRNVSRGECVDKCNLLEGEPREFVENSECIQCHP
 ECLPQAMNITCTGRGPDNCIQCAHYIDGPHCVKTC PAGVMGENNTLVWKYADAGHVCHLCHPNCTYGCTG
 PGLEGCPTNGPKIPSIATGMV GALLLLLVVALGIGLFMRRRHI VRKRTLRRLLQERELVEPLTPSGEAPN
 QALLRILKETEFKKIKVLGSGAFGT VYKGLWIPEGEKVKIPVAIKELREATSPKANKEILDEAYVMASMD
 NPHVCRLLGICLTSTVQLITQLMPFGCLLDYVREHKDNIGSQYLLNWCVQIAKGMNYLED RRLVHRDLAA
 RNVLVKTPQHVKITDFGLAKLLGAE EKEYHAEGKVPIKWMAL ESILHRIYTHQSDVWSYGVTVWELMTF
 GSKPYDGPASEISSILEKGERLPQPPICTIDVYIMVKCWMIDADSRPKFRELIIIEFSKMARDPQRYLV
 IQGDERMHLPSPTDSNFYRALMDEEDMDVDVDADEYLIPQQGFFSSPSTSRTPLLSLSATSNNSTVACI
 DRNGLQSCPIKEDSFLQRYSSDPTGALTEDSIDD TFLPVPEYINQSVPKRPAGSVQNPVYHNQPLNPAPS
 RDPHYQDPHSTAVGNPEYLVNTVQPTCVNSTFD SPAHWAQKGS HQISLDNPDYQQDFPFKEAKPNGIFKGS
 TAENAEYLRVAPQSSEFIGA

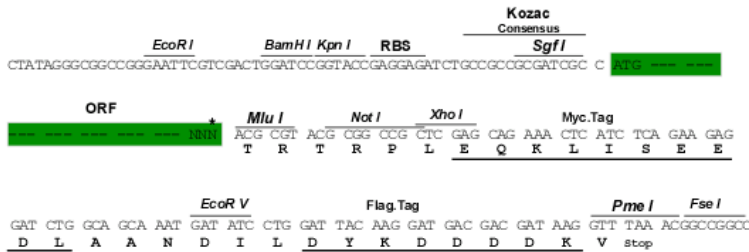
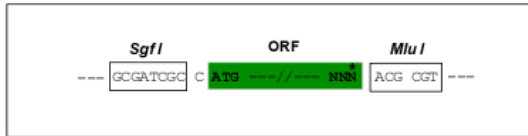
TRTRPLEQKLISEEDLAANDILDYKDDDDKV

Restriction Sites:

SgfI-MluI

Cloning Scheme:

Cloning sites used for ORF Shuttling:



* The last codon before the Stop codon of the ORF

OTI Disclaimer:	<p>Due to the inherent nature of this plasmid, standard methods to replicate additional amounts of DNA in E. coli are highly likely to result in mutations and/or rearrangements. Therefore, OriGene does not guarantee the capability to replicate this plasmid DNA. Additional amounts of DNA can be purchased from OriGene with batch-specific, full-sequence verification at a reduced cost. Please contact our customer care team at custsupport@origene.com or by calling 301.340.3188 option 3 for pricing and delivery.</p> <p>The molecular sequence of this clone aligns with the gene accession number as a point of reference only. However, individual transcript sequences of the same gene can differ through naturally occurring variations (e.g. polymorphisms), each with its own valid existence. This clone is substantially in agreement with the reference, but a complete review of all prevailing variants is recommended prior to use. More info</p>
OTI Annotation:	This clone was engineered to express the complete ORF with an expression tag. Expression varies depending on the nature of the gene.
Components:	The ORF clone is ion-exchange column purified and shipped in a 2D barcoded Matrix tube containing 10ug of transfection-ready, dried plasmid DNA (reconstitute with 100 ul of water).
RefSeq:	NP_005219
RefSeq Size:	5616 bp
RefSeq ORF:	3633 bp
Locus ID:	1956
Cytogenetics:	7p11.2
Domains:	Recep_L_domain, pkinase, TyrKc, S_TKc, Furin-like, FU
Protein Families:	Adult stem cells, Cancer stem cells, Druggable Genome, ES Cell Differentiation/IPS, Protein Kinase, Secreted Protein, Stem cell relevant signaling - JAK/STAT signaling pathway, Transmembrane
Protein Pathways:	Adherens junction, Bladder cancer, Calcium signaling pathway, Colorectal cancer, Cytokine-cytokine receptor interaction, Dorso-ventral axis formation, Endocytosis, Endometrial cancer, Epithelial cell signaling in Helicobacter pylori infection, ErbB signaling pathway, Focal adhesion, Gap junction, Glioma, GnRH signaling pathway, MAPK signaling pathway, Melanoma, Non-small cell lung cancer, Pancreatic cancer, Pathways in cancer, Prostate cancer, Regulation of actin cytoskeleton
MW:	134 kDa

Gene Summary:

The protein encoded by this gene is a transmembrane glycoprotein that is a member of the protein kinase superfamily. This protein is a receptor for members of the epidermal growth factor family. EGFR is a cell surface protein that binds to epidermal growth factor, thus inducing receptor dimerization and tyrosine autophosphorylation leading to cell proliferation. Mutations in this gene are associated with lung cancer. EGFR is a component of the cytokine storm which contributes to a severe form of Coronavirus Disease 2019 (COVID-19) resulting from infection with severe acute respiratory syndrome coronavirus-2 (SARS-CoV-2). [provided by RefSeq, Jul 2020]