

## Product datasheet for **RC400301**

### EGFR (NM\_005228) Human Mutant ORF Clone

#### Product data:

Product Type:	Mutant ORF Clones
Product Name:	EGFR (NM_005228) Human Mutant ORF Clone
Mutation Description:	E746_S752>V
Affected Codon#:	746
Affected NT#:	c.2237_2255
Nucleotide Mutation:	EGFR Mutant (E746_S752>V), Myc-DDK-tagged ORF clone of Homo sapiens epidermal growth factor receptor (EGFR), transcript variant 1 as transfection-ready DNA
Effect:	deletion
Symbol:	EGFR
Synonyms:	ERBB; ERBB1; ERRP; HER1; mENA; NISBD2; PIG61
E. coli Selection:	Kanamycin (25 ug/mL)
Mammalian Cell Selection:	Neomycin
Vector:	pCMV6-Entry (PS100001)
Tag:	Myc-DDK
ACCN:	NM_005228
ORF Size:	3630 bp
Restriction Sites:	SgfI-MluI
ORF Nucleotide Sequence:	>RC400301 representing NM_005228 Red=Cloning site Blue=ORF Green=Tags(s)

TTTTGTAATACGACTCACTATAGGGCGGCCGGGAATTCGTCGACTGGATCCGGTACCGAGGAGATCTGCC  
GCC**GCGATCGCC**

ATGCGACCCTCCGGGACGGCCGGGCAGCGCTCCTGGCGTCTGGCTGCGCTCTGCCCGCGAGTCGGG  
CTCTGGAGGAAAAGAAAGTTTGCCAAGGCACGAGTAACAAGCTCACGCAGTTGGGCACCTTTGAAGATCA  
TTTTCTCAGCCTCCAGAGGATGTTCAATAACTGTGAGGTGGTCTTGGGAATTTGGAAATTACCTATGTG  
CAGAGGAATTATGATCTTTCCTTCTTAAAGACCATCCAGGAGGTGGCTGGTTATGTCTCATTGCCCTCA  
ACACAGTGGAGCGAATTCCTTTGGAAAACCTGCAGATCATCAGAGGAAATATGTACTACGAAAATTCCTA  
TGCCTTAGCAGTCTTATCTAACTATGATGCAAAATAAACCGGACTGAAGGAGCTGCCCATGAGAAATTA  
CAGGAAATCCTGCATGGCGCCGTGCGGTTCCAGCAACAACCTGCCTGTGCAACGTGGAGAGCATCCAGT



[View online »](#)

GGCGGGACATAGTCAGCAGTGACTTTCTCAGCAACATGTCGATGGACTTCCAGAACCACCTGGGCAGCTG  
CCAAAAGTGTGATCCAAGCTGTCCCAATGGGAGCTGCTGGGGTGCAGGAGAGGAGAACTGCCAGAACTG  
ACCAAAATCATCTGTGCCAGCAGTGCTCCGGGCGCTGCCGTGGCAAGTCCCCAGTGACTGCTGCCACA  
ACCAGTGTGCTGCAGGCTGCACAGGCCCCCGGGAGAGCGACTGCCTGGTCTGCCGCAAAATCCGAGACGA  
AGCCACGTGCAAGGACACCTGCCCCCACTCATGTCTACAACCCACCACGTACCAGATGGATGTGAAC  
CCCAGGGCAAATACAGCTTTGGTGCCACCTGCGTGAAGAAGTGTCCCGTAATTATGTGGTGACAGATC  
ACGGCTCGTGCCTCCGAGCCTGTGGGGCCGACGCTATGAGATGGAGGAAGACGGCGTCCGCAAGTGTA  
GAAGTGCGAAGGGCCTTGCCGCAAAGTGTGAACGGAATAGGTATTGGTGAATTTAAAGACTCACTCTCC  
ATAAATGCTACGAATATTAACAACCTTCAAAAACCTGCACCTCCATCAGTGGCGATCTCCACATCCTGCCGG  
TGGCATTTAGGGGTGACTCCTTCACACATACTCCTCTGGATCCACAGGAACTGGATATTCTGAAAAC  
CGTAAAGGAAATCACAGGGTTTTTGTGATTACAGGCTTGGCCTGAAAACAGGACGGACCTCCATGCCTTT  
GAGAACCTAGAAATCATACGCGGCAGGACCAAGCAACATGGTCAGTTTTCTCTTGACGTGCTCAGCCTGA  
ACATAACATCCTTGGGATTACGCTCCCTCAAGGAGATAAGTATGGAGATGTGATAATTTAGGAAACAA  
AAATTTGTGCTATGCAAATAACAATAAAGTGAAAAAACTGTTTGGGACCTCCGGTCAGAAAACAAAATT  
ATAAGCAACAGAGGTGAAAACAGCTGCAAGGCCACAGGCCAGGTCTGCCATGCCTTGTGCTCCCCGAGG  
GCTGCTGGGGCCCGAGCCAGGGACTGCGTCTTTGCCGGAATGTCAGCCGAGGAGGGAATGCGTGGA  
CAAGTGAACCTTCTGGAGGGTGAAGCAAGGGAGTTTGTGGAGAACTCTGAGTGCATACAGTGCCACCCA  
GAGTGCCTGCCTCAGGCCATGAACATCACCTGCACAGGACGGGGACCAGACAACCTGTATCCAGTGTGCC  
ACTACATTGACGGCCCCACTGCGTCAAGACCTGCCCGCAGGAGTCAATGGGAGAAAACAACACCTGGT  
CTGGAAGTACGCGAGCGCCGCCATGTGTGCCACCTGTGCCATCCAACTGCACCTACGGATGACTGGG  
CCAGGTCTTGAAGGCTGTCCAACGAATGGGCCTAAGATCCCGTCCATCGCCACTGGGATGGTGGGGGCC  
TCCTCTTGCTGCTGGTGGTGGCCCTGGGGATCGGCCTTTCATGCGAAGGCGCCACATCGTTTCGGAAGCG  
CAGCTCGCGAGGCTGCTGCAGGAGAGGAGCTTGTGGAGCCTTTACACCCAGTGGAGGAACTCCCAAC  
CAAGCTCTCTTGAAGGATCTTGAAGGAACTGAATTCAAAAGATCAAAGTGTGGGCTCCGGTGCCTTCG  
GCACGGTGTATAAGGGACTCTGGATCCCAGAAGGTGAGAAAGTTAAAATTCCTCGCTATCAAGTTAA  
GAGAAGCAACATC>TTCCGAAAGCCAACAAGGAAATCCTCGATGAAGCCTACGTGATGGCCAGCGTGGAC  
AACCCCAACGTGTCCGCTGCTGGGCATCTGCCTCACCTCCACCGTGCAGTCAACACGAGCTCATGC  
CCTTCGGCTGCCTCCTGGACTATGTCCGGGAACACAAAGACAATATTGGCTCCAGTACCTGCTCAACTG  
GTGTGTGCAGATCGCAAAGGCATGAACACTTGGAGGACCGTGCCTTGGTGCACCGCGACTGGCAGCC  
AGGAACGTACTGGTGAACACCCGAGCATGTCAAGATCACAGATTTTGGGCTGGCCAACTGCTGGGTG  
CGGAAGAGAAAGAATACCATGCAGAAGGAGGCAAAGTGCCTATCAAGTGGATGGCATTGGATCAATTTT  
ACACAGAATCTATACCCACCAGAGTGTGTCTGGAGCTACGGGGTACCGTTTGGGAGTTGATGACCTTT  
GGATCCAAGCCATATGACGGAATCCCTGCCAGCGAGATCTCCTCCATCCTGGAGAAAGGAGAACGCCCTC  
CTCAGCCACCCATATGTACCATCGATGTCTACATGATCATGGTCAAGTGTGGATGATAGACGCAGATAG  
TCGCCCAAAGTTCCGTGAGTTGATCATCGAATTTCTCAAAAATGGCCCGAGACCCCAAGCGCTACCTTGT  
ATTCAGGGGGATGAAAGAATGCATTTGCCAAGTCTACAGACTCCAACCTTCTACCGTGCCTGATGGATG  
AAGAAGACATGGACGACGTGGTGGATGCCGACGAGTACCTCATCCACAGCAGGGCTTCTCAGCAGCCC  
CTCCACGTACGGACTCCCCTCCTGAGCTCTCTGAGTGCAACCAGCAACAATTCACCGTGGCTTGCATT  
GATAGAAATGGGCTGCAAAGCTGTCCCATCAAGGAAGACAGCTTCTTGCAGGATACAGCTCAGACCCCA  
CAGGCGCCTTGACTGAGGACAGCATAGACGACACCTTCTCCAGTGCCTGAATACATAAACCAGTCCGT  
TCCAAAAGGCCCGCTGGCTCTGTGCAGAATCCTGTCTATCACAATCAGCCTCTGAACCCCGCGCCAGC  
AGAGACCCACACTACCAGGACCCCCACAGCACTGCAGTGGGCAACCCCGAGTATCTAACACTGTCCAGC  
CCACCTGTGTCAACAGCACATTCGACAGCCCTGCCACTGGGCCAGAAAGGCAGCCACCAAATAGCCT  
GGACAACCCTGACTACCAGCAGGACTTCTTTCCAAAGGAAGCCAAGCCAATGGCATCTTAAGGGCTCC  
ACAGCTGAAAATGCAGAATACCTAAGGGTGCGCCACAAAGCAGTGAATTTATTGGAGCA

ACGCGTACGCGGCGCTCGAGCAGAACTCATCTCAGAAGAGGATCTGGCAGCAATGATATCCTGGATT  
ACAAGGATGACGACGATAAGGTTTAA

**Protein Sequence:** >RC400301 representing NM\_005228  
 Red=Cloning site Green=Tags(s)

MRPSGTAGAALLALLAALCPASRALEEKKVCQGTSNKL TQLGTFEDHFLSLQRMFNCEVVLGNLEITYY  
 QRNYDL SFLKTIQEVAGYVLI ALNTVERIPL ENLQIIRGNMYE NSYALAVLSNYDANKTGLKELPMRNL  
 QEILHGAVRFSNNPALCNVESIQWRDI VSSDFLSNM SMDFQNH LGSCQKCDP SCPNGSCWGAGEENCQKL  
 TKIICAQQCSGRCRGKSPSDCCHNQCAAGCTGPRESCLVCRKFRDEATCKDTCPLML YNPPTYQMDVN  
 PEGKYSFGATCVKKCPRNYVVDH GSCVRACGADSYEMEEDGVRKCKKCEGPCRKVCNGIGIGEFKDSLS  
 INATNIKHFKNCTISGDLHILPVAFRGDSFTHTPPLDPQELDILKTVKEITGFLLIQAWPENRTDLHAF  
 ENLEIIRGRTKQHGFSLAVVSLNITSLGLRSLKEISDGDV IISGNKLCYANTINWKKLFGTSGQKTKI  
 ISNRGENSCKATGQVCHALCSPEGCWGPEPRDCVSCRNVSRGECVDKCNLLEGEPPREFVENSECIQCHP  
 ECLPQAMNITCTGRGPDNCIQCAHYIDGPHCVKTC PAGVMGENNTLVWKYADAGHVCHLCHPNCTYGCTG  
 PGLEGPTNGPKIPSIATGMV GALLLLLVVALGIGLFMRRRHI VRKRTLRRLLQERELVEPLTPSGEAPN  
 QALLRILKETEFKKIKVLGSGAFGTVYKGLWIP EGEKVKIPVAIKVKRSNIXPKANKEILDEAYVMASVD  
 NPHVCRLLGICLTSTVQLITQLMPFGCLLDYVREHKDNI GSQYLLNWCVQIAKGMNYLED RRLVHRDLAA  
 RNVLVKTPQHVKITDFGLAKLLGAE EKEYHAEGKVP I KWMAL ESILHRIYTHQSDVWSYGVTVWELMTF  
 GSKPYDGPASEISSILEKGERLPQPPICTIDVYIMVKCWMIDADSRPKFRELII EFSKMARDPQRYLV  
 IQGDERMHLPSPTDSNFYRALMDEEDMDVDVDADEYL IPQQGFFSSPSTSRTPLLSSLSATSNNSTVACI  
 DRNGLQSCPIKEDSFLQRYSSDPTGALTEDSIDD TFLPVPEYINQSVPKRPA GSVQNPVYHNQPLN PAPS  
 RDPHYQDPHSTAVGNPEYLVNTVQPTCVNSTFD SPAHWAQK GSHQISLDNPDYQQDFFPKEAKPNGIFKGS  
 TAENAEYLRVAPQSSEFIGA

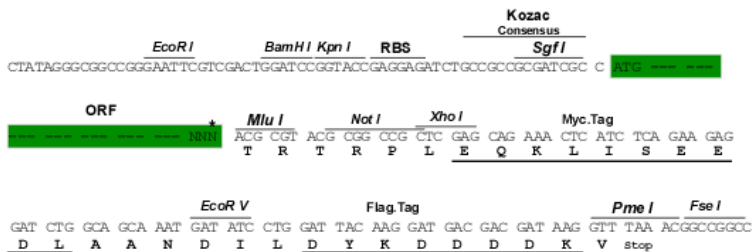
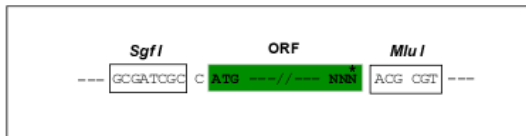
TRTRPLEQKLISEEDLAANDILDYKDDDDKV

**Restriction Sites:**

SgfI-MluI

**Cloning Scheme:**

Cloning sites used for ORF Shuttling:



\* The last codon before the Stop codon of the ORF

<b>OTI Disclaimer:</b>	<p>Due to the inherent nature of this plasmid, standard methods to replicate additional amounts of DNA in E. coli are highly likely to result in mutations and/or rearrangements. Therefore, OriGene does not guarantee the capability to replicate this plasmid DNA. Additional amounts of DNA can be purchased from OriGene with batch-specific, full-sequence verification at a reduced cost. Please contact our customer care team at <a href="mailto:custsupport@origene.com">custsupport@origene.com</a> or by calling 301.340.3188 option 3 for pricing and delivery.</p> <p>The molecular sequence of this clone aligns with the gene accession number as a point of reference only. However, individual transcript sequences of the same gene can differ through naturally occurring variations (e.g. polymorphisms), each with its own valid existence. This clone is substantially in agreement with the reference, but a complete review of all prevailing variants is recommended prior to use. <a href="#">More info</a></p>
<b>OTI Annotation:</b>	This clone was engineered to express the complete ORF with an expression tag. Expression varies depending on the nature of the gene.
<b>Components:</b>	The ORF clone is ion-exchange column purified and shipped in a 2D barcoded Matrix tube containing 10ug of transfection-ready, dried plasmid DNA (reconstitute with 100 ul of water).
<b>RefSeq:</b>	<a href="#">NP_005219</a>
<b>RefSeq Size:</b>	5616 bp
<b>RefSeq ORF:</b>	3633 bp
<b>Locus ID:</b>	1956
<b>Cytogenetics:</b>	7p11.2
<b>Domains:</b>	Recep_L_domain, pkinase, TyrKc, S_TKc, Furin-like, FU
<b>Protein Families:</b>	Adult stem cells, Cancer stem cells, Druggable Genome, ES Cell Differentiation/IPS, Protein Kinase, Secreted Protein, Stem cell relevant signaling - JAK/STAT signaling pathway, Transmembrane
<b>Protein Pathways:</b>	Adherens junction, Bladder cancer, Calcium signaling pathway, Colorectal cancer, Cytokine-cytokine receptor interaction, Dorso-ventral axis formation, Endocytosis, Endometrial cancer, Epithelial cell signaling in Helicobacter pylori infection, ErbB signaling pathway, Focal adhesion, Gap junction, Glioma, GnRH signaling pathway, MAPK signaling pathway, Melanoma, Non-small cell lung cancer, Pancreatic cancer, Pathways in cancer, Prostate cancer, Regulation of actin cytoskeleton
<b>MW:</b>	134 kDa

**Gene Summary:**

The protein encoded by this gene is a transmembrane glycoprotein that is a member of the protein kinase superfamily. This protein is a receptor for members of the epidermal growth factor family. EGFR is a cell surface protein that binds to epidermal growth factor, thus inducing receptor dimerization and tyrosine autophosphorylation leading to cell proliferation. Mutations in this gene are associated with lung cancer. EGFR is a component of the cytokine storm which contributes to a severe form of Coronavirus Disease 2019 (COVID-19) resulting from infection with severe acute respiratory syndrome coronavirus-2 (SARS-CoV-2). [provided by RefSeq, Jul 2020]