

Product datasheet for **RC400290**

EGFR (NM_005228) Human Mutant ORF Clone

Product data:

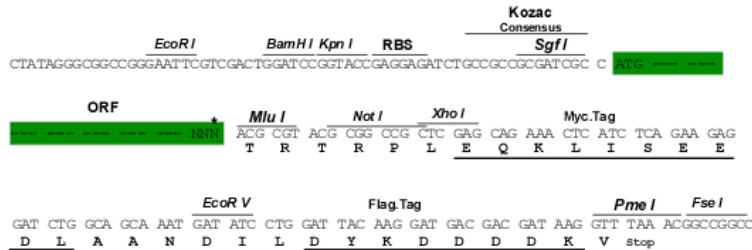
Product Type:	Mutant ORF Clones
Product Name:	EGFR (NM_005228) Human Mutant ORF Clone
Mutation Description:	L858R
Affected Codon#:	858
Affected NT#:	c.2573
Nucleotide Mutation:	EGFR Mutant (L858R), Myc-DDK-tagged ORF clone of Homo sapiens epidermal growth factor receptor (EGFR), transcript variant 1 as transfection-ready DNA
Effect:	Missense
Symbol:	EGFR
Synonyms:	ERBB; ERBB1; ERRP; HER1; mENA; NISBD2; PIG61
E. coli Selection:	Kanamycin (25 ug/mL)
Mammalian Cell Selection:	Neomycin
Vector:	pCMV6-Entry (PS100001)
Tag:	Myc-DDK
ACCN:	NM_005228
ORF Size:	3630 bp
Restriction Sites:	Sgfl-Mlul
Restriction Sites:	Sgfl-Mlul



[View online »](#)

Cloning Scheme:

Cloning sites used for ORF Shutting:

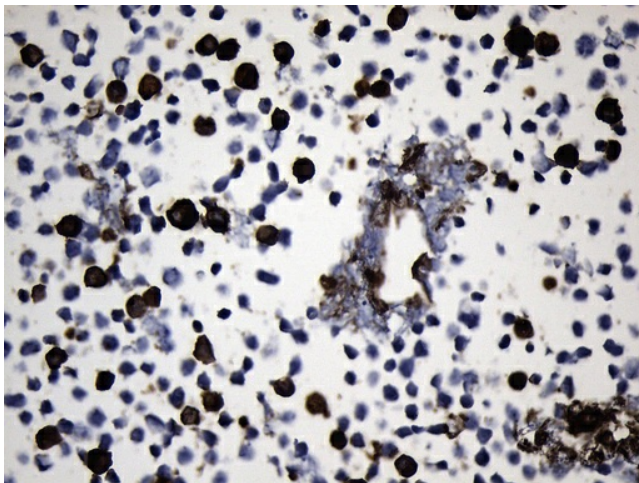


* The last codon before the Stop codon of the ORF

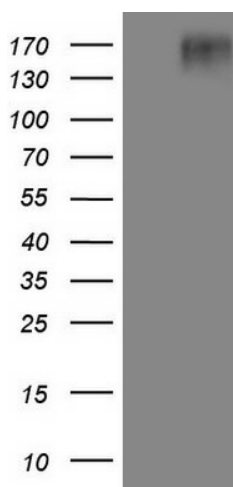
- OTI Disclaimer:** The molecular sequence of this clone aligns with the gene accession number as a point of reference only. However, individual transcript sequences of the same gene can differ through naturally occurring variations (e.g. polymorphisms), each with its own valid existence. This clone is substantially in agreement with the reference, but a complete review of all prevailing variants is recommended prior to use. [More info](#)
- OTI Annotation:** This clone was engineered to express the complete ORF with an expression tag. Expression varies depending on the nature of the gene.
- Components:** The ORF clone is ion-exchange column purified and shipped in a 2D barcoded Matrix tube containing 10ug of transfection-ready, dried plasmid DNA (reconstitute with 100 ul of water).
- Note:** Plasmids are not sterile. For experiments where strict sterility is required, filtration with 0.22um filter is required.
- RefSeq:** [NP_005219](#)
- RefSeq Size:** 5616 bp
- RefSeq ORF:** 3633 bp
- Locus ID:** 1956

Cytogenetics:	7p11.2
Domains:	Recep_L_domain, pkinase, TyrKc, S_TKc, Furin-like, FU
Protein Families:	Adult stem cells, Cancer stem cells, Druggable Genome, ES Cell Differentiation/IPS, Protein Kinase, Secreted Protein, Stem cell relevant signaling - JAK/STAT signaling pathway, Transmembrane
Protein Pathways:	Adherens junction, Bladder cancer, Calcium signaling pathway, Colorectal cancer, Cytokine-cytokine receptor interaction, Dorso-ventral axis formation, Endocytosis, Endometrial cancer, Epithelial cell signaling in Helicobacter pylori infection, ErbB signaling pathway, Focal adhesion, Gap junction, Glioma, GnRH signaling pathway, MAPK signaling pathway, Melanoma, Non-small cell lung cancer, Pancreatic cancer, Pathways in cancer, Prostate cancer, Regulation of actin cytoskeleton
MW:	134 kDa
Gene Summary:	The protein encoded by this gene is a transmembrane glycoprotein that is a member of the protein kinase superfamily. This protein is a receptor for members of the epidermal growth factor family. EGFR is a cell surface protein that binds to epidermal growth factor, thus inducing receptor dimerization and tyrosine autophosphorylation leading to cell proliferation. Mutations in this gene are associated with lung cancer. EGFR is a component of the cytokine storm which contributes to a severe form of Coronavirus Disease 2019 (COVID-19) resulting from infection with severe acute respiratory syndrome coronavirus-2 (SARS-CoV-2). [provided by RefSeq, Jul 2020]

Product images:



Immunohistochemical staining of paraffin-embedded 293T transfected with EGFR L858R (RC400290) cell pellets using anti-EGFR L858R mouse monoclonal antibody (Heat-induced epitope retrieval by 1mM EDTA in 10mM Tris buffer (pH8.0) at 120°C for 2.5 min, [UM800126]) (1:300)



HEK293T cells were transfected with the pCMV6-ENTRY control (Cat# [PS100001], Left lane) or pCMV6-ENTRY EGFR L858R (RC400290, Right lane) cDNA for 48 hrs and lysed. Equivalent amounts of cell lysates (5 ug per lane) were separated by SDS-PAGE and immunoblotted with anti-EGFR L858R (Cat# [TA806824])(1:2000). Positive lysates [LY417434] (100ug) and [LC417434] (20ug) can be purchased separately from OriGene.