

Product datasheet for **RC400185**

E Cadherin (CDH1) (NM_004360) Human Mutant ORF Clone

Product data:

Product Type:	Mutant ORF Clones
Product Name:	E Cadherin (CDH1) (NM_004360) Human Mutant ORF Clone
Mutation Description:	A634V
Affected Codon#:	634
Affected NT#:	c.1901
Nucleotide Mutation:	CDH1 Mutant (A634V), Myc-DDK-tagged ORF clone of Homo sapiens cadherin 1, type 1, E-cadherin (epithelial) (CDH1) as transfection-ready DNA
Effect:	Missense
Symbol:	CDH1
Synonyms:	Arc-1; BCDS1; CD324; CDHE; ECAD; LCAM; UVO
E. coli Selection:	Kanamycin (25 ug/mL)
Mammalian Cell Selection:	Neomycin
Vector:	pCMV6-Entry (PS100001)
Tag:	Myc-DDK
ACCN:	NM_004360
ORF Size:	2646 bp
Restriction Sites:	Sgfl-Mlul



[View online »](#)

ORF Nucleotide Sequence:

>RC400185 representing NM_004360
 Red=Cloning site Blue=ORF Green=Tags(s)

TTTTGTAATACGACTCACTATAGGGCGGCCGGGAATTCGTCGACTGGATCCGGTACCGAGGAGATCTGCC
 GCC**CGATCGCC**

ATGGGCCCTTGGAGCCGACGCTCTCGGCGCTGCTGCTGCTGCAGGTCTCCTTTGGCTCTGCCAGG
 AGCCGGAGCCCTGCCACCCTGGCTTTGACGCCGAGAGCTACACGTTACCGGTGCCCGGCCACCCTGGA
 GAGAGGCCCGCTCTGGCAGAGTGAATTTGAAGATTGCACCGGTGACAAAAGGACAGCCTATTTTCC
 CTCGACACCCGATTCAAAGTGGGCACAGATGGTGTATTACAGTCAAAAGGCCTCTACGGTTTCATAACC
 CACAGATCCATTTCTGGTCTACGCCTGGGACTCCACCTACAGAAAAGTTTCCACCAAAGTACAGCTGAA
 TACAGTGGGGCACCACCACCGCCCGCCCATCAGGCCTCCGTTTCTGGAATCCAAGCAGAATTGCTC
 ACATTTCCAACCTCTCTCTGGCCTCAGAAGACAGAAGAGAGACTGGGTTATTCCTCCCATCAGCTGCC
 CAGAAAATGAAAAGGCCATTTCTTAAAACTGGTTTCCAGATCAAATCCAACAAAGACAAGAAGGCAA
 GGTCTTCTACAGCATCACTGGCCAAGGAGCTGACACACCCCTGTTGGTGTCTTTATTATTGAAAGAGAA
 ACAGGATGGCTGAAGGTGACAGAGCCTCTGGATAGAGAACGCATTGCCACATACACTCTCTCTCAGC
 CTGTGTATCCAACGGGAATGCAGTTGAGGATCCAATGGAGATTTTGATCACGGTAACCGATCAGAATGA
 CAACAAGCCGAATTCACCCAGGAGGTCTTAAAGGGTCTGTCATGGAAGGTGCTCTCCAGGAACCTCT
 GTGATGGAGGTACAGCCACAGACGCGGACGATGATGTGAACCTACAATGCCGCCATCGCTTACACCA
 TCCTCAGCCAAGATCTGAGCTCCCTGACAAAAATATGTTCCACCTAACAGGAACACAGGAGTCATCAG
 TGTGGTCAACTGGGCTGGACCGAGAGAGTTCCCTACGTATACCCTGGTGGTCAAGCTGCTGACCTT
 CAAGGTGAGGGTTAAGCACACAGCAACAGCTGTGATCACAGTCACTGACACCAACGATAATCCTCCGA
 TCTTCAATCCCACCAGTACAAGGGTCAGGTGCTGAGAACGAGGCTAACGTCGTAATCACCACATGAA
 AGTGACTGATGCTGATGCCCAATACCCAGCGTGGGAGGCTGTATACACCATATTGAATGATGATGGT
 GGACAATTTGTCGTCACCACAAAATCCAGTGAACAACGATGGCATTGAAAACAGCAAAGGGCTGGATT
 TTGAGGCCAAGCAGCAGTACATTCTACACGTAGCAGTACGAATGTGGTACCTTTGAGGTCTCTCTCAC
 CACCTCCACAGCCACCGTCACCGTGGATGTGCTGGATGTGAATGAAGCCCCATCTTTGTGCTCCTGAA
 AAGAGAGTGAAGTGTCCGAGGACTTTGGCGTGGGCCAGGAAATCACATCTACACTGCCAGGAGCCAG
 ACACATTTATGGAACAGAAAATAACATATCGGATTTGGAGAGACTGCCAACTGGCTGGAGATTAATCC
 GGACACTGGTGCATTTCCACTCGGCTGAGCTGGACAGGAGGATTTGAGCACGTGAAGAACAGCAGC
 TACACAGCCCTAATCATAGCTACAGACAATGGTTCTCCAGTTGCTACTGGAACAGGGACACTTCTGCTGA
 TCCTGTCTGATGTGAATGACAACGCCCCATACCAAGAACCTCGAACTATATTCTTCTGTGAGAGGAATCC
 AAAGCCTCAGGTCAAAACATCATTGATGCAGACCTTCCCTCCAATACATCTCCCTTACAGCAGAACTA
 ACACACGGGGTGAAGTCCAACCTGGACATTCAGTACAACGACCCAACCAAGAATCTATCATTTTGAAGC
 CAAAGATGGCCTTAGAGGTGGGTGACTACAAAATCAATCTCAAGCTCATGGATAACCAGAATAAAGACCA
 AGTGACCACCTTAGAGGTGAGCGTGTGACTGTGAAGGGGCCGCTGGCGTCTGTAGGAAGGCACAGCCT
 GTCGAAGCAGGATTGCAAATCCTGCCATCTGGGGATTCTGGAGGAATCTTGCTTTGCTAATTTCTGA
 TTCTGCTGCTCTGCTGTTTCTTCGGAGGAGAGCGGTGGTCAAAGAGCCCTTACTGCCCCAGAGGATGA
 CACCCGGGACAACGTTTATTACTATGATGAAGAAGGAGCGGAGAAGAGGACCAGGACTTTGACTTGAGC
 CAGCTGCACAGGGCCCTGGACGCTCGGCCTGAAGTGACTCGTAACGACGTTGCACCAACCTCATGAGTG
 TCCCCCGTATCTCCCCGCCCTGCCAATCCCGATGAAATTTGAAATTTTATTGATGAAAATCTGAAAGC
 GGCTGATACTGACCCACAGCCCGCTTATGATTCTCTGCTGCTGTTTACTATGAAGGAAGCGGTTCC
 GAAGCTGCTAGTCTGAGCTCCCTGAACTCCTCAGAGTCAGACAAAGACCAGGACTATGACTACTTGAACG
 AATGGGGCAATCGCTTCAAGAAGCTGGCTGACATGTACGGAGGCGGCGAGGACGAC

ACGCGTACGCGGCCGCTCGAGCAGAACTCATCTCAGAAGAGGATCTGGCAGCAATGATATCCTGGATT
 ACAAGGATGACGACGATAAGGTTTAA

Protein Sequence: >RC400185 representing NM_004360
 Red=Cloning site Green=Tags(s)

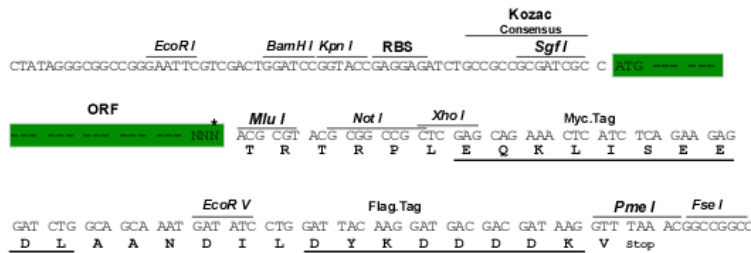
MGPWSRSL SALLLLLQVSSWLCQEPEPCHPGFDAESYFTVPRRHLERGRVLRVNFEDCTGRQRTAYFS
 LDTRFKVGTGDGIVTKRPLRFHNPQIHFLVYAWDSTYRKFKSTKVTLNTVGHHRPPPHQASVSGIQAELL
 TFPNSSPGLRRQKRDWVIPPISCPENEGKPFKKNLVQIKSNKDKGKVFYSITGQGADTPPVGVFIERE
 TGWLKVTEPLDRERIATYTLFSAVSSNGNAVEDPMEILITVTDQNDNKPEFTQEVFKGSYMEGALPGTS
 VMEVTATDADDDVNTYNAAIAYTILSQDPELPDKNMFTINRNTGVISVVTGLDRESFPTYTLVVAADL
 QGEGLSLTATAVITVTDNDNPPIFNPTTYKQVPEANEVVTTLKVTADAPNTPAWEAVYTI LNDG
 GQFVVTNPVNDGILKTAKGLDFEAKQYILHVAVTNVVPFEVSLTTSTATVTVDLVDVNEAIFVPE
 KRVEVSEDFGVQEITSYTAQEPDTFMEQKITYRIWRDTANWLEINPDTGAISTRAELDREDFEHVKNST
 YTALIIATDNGSPVATGTGTL LILSDVNDNAPIPEPRTIFFCERNPKPQVINIIDADLPNTPSPTAEL
 THGVSANWTIQYNDPTQESIILKPKMALEVGDYKINLKLMDNQNKDQVTTLEVSVCDCGAAGVCRKAQP
 VEAGLQIPAILGILGGILALLIL LLLLLLFLRRRAVVKEPLLPEDDTRDNVYYYDEEGGGEEDQDFDLS
 QLHRGLDARPEVTRNDVAPTLMSVPRYLPRPANPDEIGNFIDENLKAADTPTAPPYDSSLVFDYEGSGS
 EASLSSLNSSESDKQDYDYLNEWGNRFKKLADMYGGGEDD

TRTRPLEQKLISEEDLAANDILDYKDDDDKV

Restriction Sites: SgfI-MluI

Cloning Scheme:

Cloning sites used for ORF Shutting:



* The last codon before the Stop codon of the ORF

OTI Disclaimer: The molecular sequence of this clone aligns with the gene accession number as a point of reference only. However, individual transcript sequences of the same gene can differ through naturally occurring variations (e.g. polymorphisms), each with its own valid existence. This clone is substantially in agreement with the reference, but a complete review of all prevailing variants is recommended prior to use. [More info](#)

OTI Annotation: This clone was engineered to express the complete ORF with an expression tag. Expression varies depending on the nature of the gene.

Components: The ORF clone is ion-exchange column purified and shipped in a 2D barcoded Matrix tube containing 10ug of transfection-ready, dried plasmid DNA (reconstitute with 100 ul of water).

RefSeq: [NP_004351](#)

RefSeq Size:	4815 bp
RefSeq ORF:	2649 bp
Locus ID:	999
Cytogenetics:	16q22.1
Domains:	Cadherin_C_term, CA
Protein Families:	Druggable Genome, ES Cell Differentiation/IPS, Transmembrane
Protein Pathways:	Adherens junction, Bladder cancer, Cell adhesion molecules (CAMs), Endometrial cancer, Melanoma, Pathogenic Escherichia coli infection, Pathways in cancer, Thyroid cancer
MW:	97 kDa
Gene Summary:	<p>This gene encodes a classical cadherin of the cadherin superfamily. Alternative splicing results in multiple transcript variants, at least one of which encodes a preproprotein that is proteolytically processed to generate the mature glycoprotein. This calcium-dependent cell-cell adhesion protein is comprised of five extracellular cadherin repeats, a transmembrane region and a highly conserved cytoplasmic tail. Mutations in this gene are correlated with gastric, breast, colorectal, thyroid and ovarian cancer. Loss of function of this gene is thought to contribute to cancer progression by increasing proliferation, invasion, and/or metastasis. The ectodomain of this protein mediates bacterial adhesion to mammalian cells and the cytoplasmic domain is required for internalization. This gene is present in a gene cluster with other members of the cadherin family on chromosome 16. [provided by RefSeq, Nov 2015]</p>