

## Product datasheet for **RC400181**

### E Cadherin (CDH1) (NM\_004360) Human Mutant ORF Clone

#### Product data:

Product Type:	Mutant ORF Clones
Product Name:	E Cadherin (CDH1) (NM_004360) Human Mutant ORF Clone
Mutation Description:	T263fs*3
Affected Codon#:	263
Affected NT#:	c.786_794
Nucleotide Mutation:	CDH1 Mutant (T263fs*3), Myc-DDK-tagged ORF clone of Homo sapiens cadherin 1, type 1, E-cadherin (epithelial) (CDH1) as transfection-ready DNA
Effect:	Frameshift
Symbol:	CDH1
Synonyms:	Arc-1; BCDS1; CD324; CDHE; ECAD; LCAM; UVO
E. coli Selection:	Kanamycin (25 ug/mL)
Mammalian Cell Selection:	Neomycin
Vector:	pCMV6-Entry (PS100001)
Tag:	Myc-DDK
ACCN:	NM_004360
ORF Size:	2646 bp
Restriction Sites:	Sgfl-Mlul



[View online »](#)

**ORF Nucleotide Sequence:**

>RC400181 representing NM\_004360  
 Red=Cloning site Blue=ORF Green=Tags(s)

TTTTGTAATACGACTCACTATAGGGCGGCCGGGAATTCGTCGACTGGATCCGGTACCGAGGAGATCTGCC  
 GCC**CGATCGCC**

ATGGGCCCTTGGAGCCGACGCTCTCGGCGCTGCTGCTGCTGCAGGTCTCCTTTGGCTCTGCCAGG  
 AGCCGGAGCCCTGCCACCCTGGCTTTGACGCCGAGAGCTACACGTTACCGGTGCCCGGCCACCCTGGA  
 GAGAGGCCCGCTCTGGGCAGAGTGAATTTGAAGATTGCACCGGTGCACAAAGGACAGCCTATTTTCC  
 CTCGACACCCGATTCAAAGTGGGCACAGATGGTGTATTACAGTCAAAGGCCTCTACGGTTTCATAACC  
 CACAGATCCATTTCTGGTCTACGCCTGGGACTCCACCTACAGAAAGTTTCCACCAAAGTACAGCTGAA  
 TACAGTGGGGCACACCACCGCCCGCCCATCAGGCCTCCGTTTCTGGAATCCAAGCAGAATTGCTC  
 ACATTTCCAACCTCTCTCTGGCCTCAGAAGACAGAAGAGAGACTGGGTTATTCCTCCCATCAGCTGCC  
 CAGAAAATGAAAAGGCCATTTCTTAAAACTGGTTACAGTCAAATCCAACAAAGACAAGAAGGCAA  
 GGTCTTCTACAGCATCACTGGCCAAGGAGCTGACACACCCCTGTTGGTGTCTTTATTATTGAAAGAGAA  
 ACAGGATGGCTGAAGGTGACAGAGCCTCTGGATAGAGAACGCATTGCCACATACACTCTCTCTCAGC  
 CTGTGTATCCACGGGAATGCAGTTGAGGATCCAATGGAGATTTTGATCACGGTAACCGATCAGAATGA  
 CAACAAGCCGAATCCAGGA>TGGTCTTTAAGGGTCTGTCATGGAAGGTGCTCTCCAGGAACCTCT  
 GTGATGGAGGTACAGCCACAGACGCGGACGATGATGTGAACCTACAATGCCGCCATCGTTACACCA  
 TCCTCAGCCAAGATCTGAGCTCCCTGACAAAAATATGTTACCATTAACAGGAACACAGGAGTCATCAG  
 TGTGGTCAACTGGGCTGGACCGAGAGAGTTCCCTACGTATACCCTGGTGGTTCAAGCTGCTGACCTT  
 CAAGGTGAGGGTTAAGCACACAGCAACAGCTGTGATCACAGTCACTGACACCAACGATAATCCTCCGA  
 TCTTCAATCCCACCAGTACAAGGGTCAGGTGCCTGAGAACGAGGCTAACGTCGTAATCACCACATGAA  
 AGTGACTGATGCTGATGCCCAATACCCAGCGTGGGAGGCTGTATACACCATATTGAATGATGATGGT  
 GGACAATTTGTCGTCACCACAAATCCAGTGAACAACGATGGCATTGAAAAACAGCAAAGGGCTGGATT  
 TTGAGGCCAAGCAGCAGTACATTCTACACGTAGCAGTACGAATGTGGTACCTTTTGGGCTCTCTCAC  
 CACCTCCACAGCCACCGTACCGTGGATGTGCTGGATGTGAATGAAGCCCCATCTTTGTGCTCCTGAA  
 AAGAGAGTGAAGTGTCCGAGGACTTTGGCGTGGGCCAGGAAATCACATCTACACTGCCAGGAGCCAG  
 ACACATTTATGGAACAGAAAATAACATATCGGATTTGGAGAGACTGCCAACTGGCTGGAGATTAATCC  
 GGACACTGGTGCATTTCCACTCGGGCTGAGCTGGACAGGAGGATTTGAGCACGTGAAGAACAGCAGC  
 TACACAGCCCTAATCATAGCTACAGACAATGGTTCTCCAGTTGCTACTGGAACAGGGACACTTCTGCTGA  
 TCCTGTCTGATGTGAATGACAACGCCCCATACCAAGAACCTCGAACTATATTCTTCTGTGAGAGGAATCC  
 AAAGCCTCAGGTATAAACATCATTGATGCAGACCTTCTCCCAATACATCTCCCTTACAGCAGAACTA  
 ACACACGGGGCGAGTGCCAACCTGGACATTCAGTACAACGACCCAACCAAGAATCTATCATTTTGAAGC  
 CAAAGATGGCCTTAGAGGTGGGTGACTACAAAATCAATCTCAAGCTCATGGATAACCAGAATAAAGACCA  
 AGTGACCACCTTAGAGGTGAGCGTGTGACTGTGAAGGGGCCGCTGGCGTCTGTAGGAAGGCACAGCCT  
 GTCGAAGCAGGATTGCAAATCCTGCCATCTGGGGATTCTTGGAGGAATCTTGCTTTGCTAATTTCTGA  
 TTCTGCTGCTCTGCTGTTTCTTCGGAGGAGAGCGGTGGTCAAAGAGCCCTTACTGCCCCAGAGGATGA  
 CACCCGGGACAACGTTTATTACTATGATGAAGAAGGAGCGGAGAAGAGGACCAGGACTTTGACTTGAGC  
 CAGCTGCACAGGGCCCTGGACGCTCGGCCTGAAGTGACTCGTAACGACGTTGCACCAACCTCATGAGTG  
 TCCCCCGTATCTCCCCGCCCTGCCAATCCCGATGAAATTTGAAATTTTATTGATGAAAATCTGAAAGC  
 GGCTGATACTGACCCACAGCCCGCTTATGATTCTCTGCTGTTTACTATGAAGGAAGCGGTTCC  
 GAAGCTGCTAGTCTGAGCTCCCTGAACTCCTCAGAGTCAGACAAAGACCAGGACTATGACTACTTGAACG  
 AATGGGCAATCGCTTCAAGAAGCTGGCTGACATGTACGGAGGCGGCGAGGACGAC

**ACGCGT**ACGCGGCCGCTCGAGCAGAACTCATCTCAGAAGAGGATCTGGCAGCAATGATATCCTGGATT  
 ACAAGGATGACGACGATAAGGTTTAA

**Protein Sequence:** >RC400181 representing NM\_004360  
 Red=Cloning site Green=Tags(s)

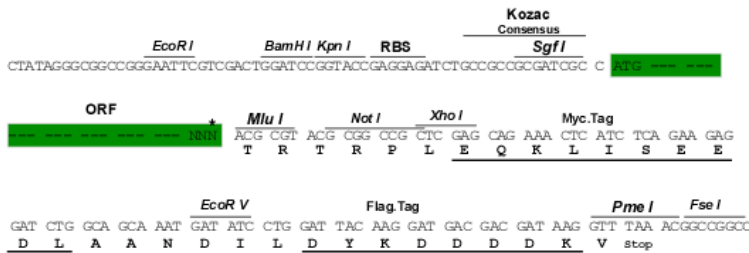
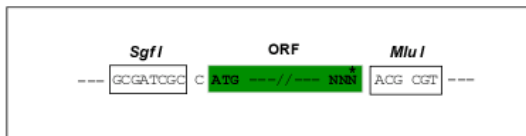
MGPWSRSL SALLLLLQVSSWLCQEPEPCHPGFDAESYFTVPRRHLERGRVLRVNFEDCTGRQRTAYFS  
 LDTRFKVGTGDGIVTKRPLRFHNPQIHFLVYAWDSTYRKFKSTKVTLNTVGHHRPPPHQASVSGIQAELL  
 TFPNSSPGLRRQKRDWVIPPISCPENEGKPFKKNLVQIKSNKDKGKVFYSITGGADTPPVGVFIERE  
 TGWLKVTEPLDRERIATYTLFSAVSSNGNAVEDPMEILITVTDQNDNKPEFPGXVFKGSMEGALPGTS  
 VMEVTATDADDDVNTYNAAIAYTILSQDPELPDKNMFTINRNTGVISVVTGLDRESFPTYTLVVAADL  
 QGEGLSLTATAVITVTDNDNPPIFNPTTYKQVPEANEVVTTLKVTADAPNTPAWEAVYITLNDG  
 GQFVVTNPVNDGILKTAKGLDFEAKQYILHVAVTNVVPFEVSLTTSTATVTVDLVDNEAIFVPE  
 KRVEVSEDFGVQEITSYTAQEPDTFMEQKITYRIWRDTANWLEINPDTGAISTRAELDREDFEHVKNST  
 YTALIIATDNGSPVATGTGTLILLSDVNDNAIPEPRTIFFCERNPKPQVINIIDADLPNTPSPTAEL  
 THGASANWTIQYNDPTQESIILKPKMALEVGDYKINLKLMDNQNKDQVTTLEVSVCDCGAAGVCRKAQP  
 VEAGLQIPAILGILGGILALLILLLLLLFLRRRAVVKPELLPPEDDTRDNVYYYDEEGGGEEDQDFDLS  
 QLHRGLDARPEVTRNDVAPTLMSVPRYLPRPANPDEIGNFIDENLKAADTPTAPPYDSSLVFDYEGSGS  
 EASLSSLNSSESDKQDYDYLNEWGNRFKKLADMYGGGEDD

TRTRPLEQKLI SEEDLAANDILDYKDDDDKV

**Restriction Sites:** SgfI-MluI

**Cloning Scheme:**

Cloning sites used for ORF Shutting:



\* The last codon before the Stop codon of the ORF

**OTI Disclaimer:** The molecular sequence of this clone aligns with the gene accession number as a point of reference only. However, individual transcript sequences of the same gene can differ through naturally occurring variations (e.g. polymorphisms), each with its own valid existence. This clone is substantially in agreement with the reference, but a complete review of all prevailing variants is recommended prior to use. [More info](#)

**OTI Annotation:** This clone was engineered to express the complete ORF with an expression tag. Expression varies depending on the nature of the gene.

**Components:** The ORF clone is ion-exchange column purified and shipped in a 2D barcoded Matrix tube containing 10ug of transfection-ready, dried plasmid DNA (reconstitute with 100 ul of water).

**RefSeq:** [NP\\_004351](#)

RefSeq Size:	4815 bp
RefSeq ORF:	2649 bp
Locus ID:	999
Cytogenetics:	16q22.1
Domains:	Cadherin_C_term, CA
Protein Families:	Druggable Genome, ES Cell Differentiation/IPS, Transmembrane
Protein Pathways:	Adherens junction, Bladder cancer, Cell adhesion molecules (CAMs), Endometrial cancer, Melanoma, Pathogenic Escherichia coli infection, Pathways in cancer, Thyroid cancer
MW:	97 kDa
Gene Summary:	<p>This gene encodes a classical cadherin of the cadherin superfamily. Alternative splicing results in multiple transcript variants, at least one of which encodes a preproprotein that is proteolytically processed to generate the mature glycoprotein. This calcium-dependent cell-cell adhesion protein is comprised of five extracellular cadherin repeats, a transmembrane region and a highly conserved cytoplasmic tail. Mutations in this gene are correlated with gastric, breast, colorectal, thyroid and ovarian cancer. Loss of function of this gene is thought to contribute to cancer progression by increasing proliferation, invasion, and/or metastasis. The ectodomain of this protein mediates bacterial adhesion to mammalian cells and the cytoplasmic domain is required for internalization. This gene is present in a gene cluster with other members of the cadherin family on chromosome 16. [provided by RefSeq, Nov 2015]</p>