

Product datasheet for **RC400152**

NRAS (NM_002524) Human Mutant ORF Clone

Product data:

Product Type:	Mutant ORF Clones
Product Name:	NRAS (NM_002524) Human Mutant ORF Clone
Mutation Description:	G13A
Affected Codon#:	13
Affected NT#:	c.38
Nucleotide Mutation:	NRAS mutant (G13A), Myc-DDK-tagged ORF clone of Homo sapiens neuroblastoma RAS viral (v-ras) oncogene homolog (NRAS) as transfection-ready DNA
Effect:	Missense
Symbol:	NRAS
Synonyms:	ALPS4; CMNS; N-ras; NCMS; NRAS1; NS6
E. coli Selection:	Kanamycin (25 ug/mL)
Mammalian Cell Selection:	Neomycin
Vector:	pCMV6-Entry (PS100001)
Tag:	Myc-DDK
ACCN:	NM_002524
ORF Size:	569 bp
Restriction Sites:	Sgfl-MluI

[View online »](#)

ORF Nucleotide
Sequence:

>RC400152 representing NM_002524
Red=Cloning site Blue=ORF Green=Tags(s)

TTTTGTAATACGACTCACTATAGGGCGGCCGGAATTCGTCGACTGGATCCGGTACCGAGGAGATCTGCC
GCCCGCATCGCC

ATGACTGAGTACAACTGGTGGTGGTTGGAGCAGGTGGCGTTGGGAAAAGCGCACTGACAATCCAGCTAA
TCCAGAACCACCTTTGTAGATGAATATGATCCCACCATAGAGGATTCTTACAGAAAACAAGTGGTTATAGA
TGGTGAACCTGTTTGTGGACATACTGGATACAGCTGGACAAGAAGGTACAGTGCCATGAGAGACCAA
TACATGAGGACAGGCGAAGGCTTCCTCTGTGTATTTGCCATCAATAATAGCAAGTCATTTGCGGATATTA
ACCTCTACAGGGAGCAGATTAAGCGAGTAAAAGACTCGGATGATGTACCTATGGTGCTAGTGGGAAACAA
GTGTGATTTGCCAACAAGGACAGTTGATACAAAACAAGCCACGAAGTGGCCAAGAGTTACGGGATTCCA
TTCATTGAAACCTCAGCCAAGACCAGACAGGTGTTGAAGATGCTTTTACACACTGGTAAGAGAAATAC
GCCAGTACCGAATGAAAAAACTCAACAGCAGTATGATGGGACTCAGGTTGTATGGGATTGCCATGTGT
GGTGATG

ACGCGTACGCGGCCGCTCGAGCAGAACTCATCTCAGAAGAGGATCTGGCAGCAAATGATATCCTGGATT
ACAAGGATGACGACGATAAGGTTTAA

Protein Sequence:

>RC400152 representing NM_002524
Red=Cloning site Green=Tags(s)

MTEYKLVVVGAGVGKSAITQLIQNHFVDEYDPTIEDSYRKQVVIDGETCLLDILDAGQEEYSAMRDQ
YMRTGEGFLCVFAINNSKSFADINLYREQIKRVKSDSDVPMVLVGNKCDLPTRTVDTKQAHELAKSYGIP
FIETSAKTRQGVDAFYTLVREIRQYRMKKLNSSDDGTQGCMLPCVVM

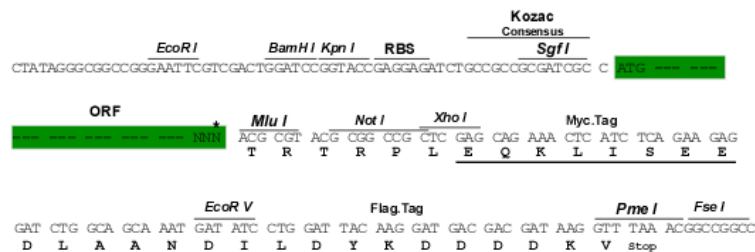
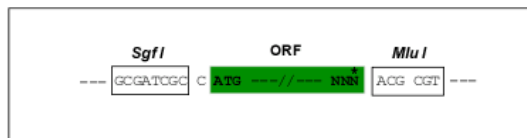
TRTRPLEQKLISEEDLAANDILDYKDDDDKV

Restriction Sites:

Sgfl-MluI

Cloning Scheme:

Cloning sites used for ORF Shuttling:



* The last codon before the Stop codon of the ORF

OTI Disclaimer:	<p>Due to the inherent nature of this plasmid, standard methods to replicate additional amounts of DNA in E. coli are highly likely to result in mutations and/or rearrangements. Therefore, OriGene does not guarantee the capability to replicate this plasmid DNA. Additional amounts of DNA can be purchased from OriGene with batch-specific, full-sequence verification at a reduced cost. Please contact our customer care team at custsupport@origene.com or by calling 301.340.3188 option 3 for pricing and delivery.</p> <p>The molecular sequence of this clone aligns with the gene accession number as a point of reference only. However, individual transcript sequences of the same gene can differ through naturally occurring variations (e.g. polymorphisms), each with its own valid existence. This clone is substantially in agreement with the reference, but a complete review of all prevailing variants is recommended prior to use. More info</p>
OTI Annotation:	This clone was engineered to express the complete ORF with an expression tag. Expression varies depending on the nature of the gene.
Components:	The ORF clone is ion-exchange column purified and shipped in a 2D barcoded Matrix tube containing 10ug of transfection-ready, dried plasmid DNA (reconstitute with 100 ul of water).
Note:	Plasmids are not sterile. For experiments where strict sterility is required, filtration with 0.22um filter is required.
RefSeq:	NP_002515
RefSeq Size:	4461 bp
RefSeq ORF:	570 bp
Locus ID:	4893
Cytogenetics:	1p13.2
Domains:	ras, RAS, RHO, RAB
Protein Families:	Druggable Genome
Protein Pathways:	Acute myeloid leukemia, Axon guidance, B cell receptor signaling pathway, Bladder cancer, Chemokine signaling pathway, Chronic myeloid leukemia, Endometrial cancer, ErbB signaling pathway, Fc epsilon RI signaling pathway, Gap junction, Glioma, GnRH signaling pathway, Insulin signaling pathway, Long-term depression, Long-term potentiation, MAPK signaling pathway, Melanogenesis, Melanoma, Natural killer cell mediated cytotoxicity, Neurotrophin signaling pathway, Non-small cell lung cancer, Pathways in cancer, Prostate cancer, Regulation of actin cytoskeleton, Renal cell carcinoma, T cell receptor signaling pathway, Thyroid cancer, Tight junction, VEGF signaling pathway

Gene Summary:

This is an N-ras oncogene encoding a membrane protein that shuttles between the Golgi apparatus and the plasma membrane. This shuttling is regulated through palmitoylation and depalmitoylation by the ZDHHC9-GOLGA7 complex. The encoded protein, which has intrinsic GTPase activity, is activated by a guanine nucleotide-exchange factor and inactivated by a GTPase activating protein. Mutations in this gene have been associated with somatic rectal cancer, follicular thyroid cancer, autoimmune lymphoproliferative syndrome, Noonan syndrome, and juvenile myelomonocytic leukemia. [provided by RefSeq, Jun 2011]