

Product datasheet for **RC400021**

p53 (TP53) (NM_000546) Human Mutant ORF Clone

Product data:

Product Type:	Mutant ORF Clones
Product Name:	p53 (TP53) (NM_000546) Human Mutant ORF Clone
Mutation Description:	N610-D1
Affected Codon#:	204
Affected NT#:	c.610
Nucleotide Mutation:	TP53 mutant (N610-D1), Myc-DDK-tagged ORF clone of Homo sapiens tumor protein p53 (TP53), transcript variant 1 as transfection-ready DNA
Effect:	Frame Shift
Symbol:	p53
Synonyms:	BCC7; BMFS5; LFS1; P53; TRP53
E. coli Selection:	Ampicillin (100 ug/mL)
Mammalian Cell Selection:	Neomycin
Vector:	pCMV6-AC-Myc-DDK (PS100007)
Tag:	Myc-DDK
ACCN:	NM_000546
ORF Size:	738 bp
Restriction Sites:	Sgfl-Mlul



[View online »](#)

ORF Nucleotide Sequence:

>RC400021 representing NM_000546
 Red=Cloning site Blue=ORF Green=Tags(s)

TTTTGTAATACGACTCACTATAGGGCGGCCGGAATTCGTCGACTGGATCCGGTACCGAGGAGATCTGCCGCCGCGATCGCC

ATGGAGGAGCCGAGTCAGATCCTAGCGTCGAGCCCCCTCTGAGTCAGGAAACATTTTCAGACCTATGGA
 AACTACTTCCTGAAAACAACGTTTGTCCCTTGCCGTCCTCAAGCAATGGATGATTGATGCTGTCCC
 GGACGATATTGAACAATGGTTCACTGAAGACCCAGGTCCAGATGAAGCTCCAGAAATGCCAGAGGCTGT
 CCCCCGTGGCCCTGCACACAGCAGCTCCTACACCGCGGCCCTGCACACGCCCCCTCCTGGCCCCTGT
 CATCTTGTGCCCTCCAGAAAACCTACCAGGGCAGCTACGTTTCCGTCTGGGCTTCTTGACTTCTGG
 GACAGCCAAGTCTGTGACTTGCACGTACTCCCCTGCCCTCAACAAGATGTTTGCCAAGTTGCAAGACC
 TGCCCTGTGCAGCTGTGGTTGATTCCACACCCCCGCCCGGCCGCGTCCGCGCCATGGCCATCTACA
 AGCAGTCACAGCACATGACGGAGGTGTGAGGCGCTGCCCCACCATGAGCGCTGCTCAGATAGCGATGG
 TCTGGCCCTCCTCAGCATCTTATCCGAGTGAAGGAAATTTGCGTGTGAGTATTTGGATGACAGAAACA
 CTTTTGACATAGTGTGGTGGTGCCTATGAGCCGCTGAGGTTGGCTCTGACTGTACCACCATCCACTA
 CAACTACATGTGTAAAGTTCCTGCATGGCGGCA

ACGCGTACGCGGCCGCTCGAGCAGAACTCATCTCAGAAGAGGATCTGGCAGCAATGATATCCTGGATT
 ACAAGGATGACGACGATAAGGTTTAA

Protein Sequence:

>RC400021 representing NM_000546
 Red=Cloning site Green=Tags(s)

MEEPQSDPSVEPPLSQETFSDLWKLLPENNVLSPLPSQAMDDLMLSPDDIEQWFTEDPGPDEAPRMPEEA
 PPVAPAPAAPTPAAPAPAPSWPLSSSVPSQKTYQGSYGFRLGFLHSGTAKSVTCTYSPALNKMFCQLAKT
 CPVQLWVDSTPPPGRVRAMAIYKQSQHMTEVRRRCPHHERCSDSDGLAPPQHLIRVEGNLRVSIWMTET
 LFDIVVWCPMSRLRLALVPPSTTTTCTVPAWAA

TRTRPLEQKLISEEDLAANDILDYKDDDDKV

Chromatograms:

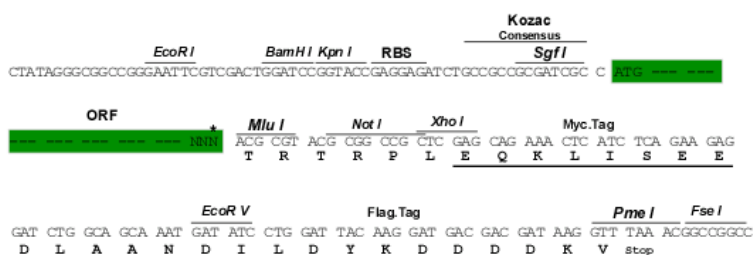
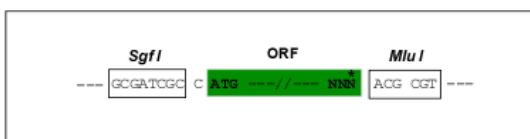
/chromatograms/ja1126_f04.zip

Restriction Sites:

SgfI-MluI

Cloning Scheme:

Cloning sites used for ORF Shuttling:



* The last codon before the Stop codon of the ORF

OTI Disclaimer:	<p>Due to the inherent nature of this plasmid, standard methods to replicate additional amounts of DNA in E. coli are highly likely to result in mutations and/or rearrangements. Therefore, OriGene does not guarantee the capability to replicate this plasmid DNA. Additional amounts of DNA can be purchased from OriGene with batch-specific, full-sequence verification at a reduced cost. Please contact our customer care team at custsupport@origene.com or by calling 301.340.3188 option 3 for pricing and delivery.</p> <p>The molecular sequence of this clone aligns with the gene accession number as a point of reference only. However, individual transcript sequences of the same gene can differ through naturally occurring variations (e.g. polymorphisms), each with its own valid existence. This clone is substantially in agreement with the reference, but a complete review of all prevailing variants is recommended prior to use. More info</p>
OTI Annotation:	This clone was engineered to express the complete ORF with an expression tag. Expression varies depending on the nature of the gene.
Components:	The ORF clone is ion-exchange column purified and shipped in a 2D barcoded Matrix tube containing 10ug of transfection-ready, dried plasmid DNA (reconstitute with 100 ul of water).
RefSeq:	NP_000537
RefSeq Size:	2629 bp
RefSeq ORF:	1182 bp
Locus ID:	7157
Cytogenetics:	17p13.1
Domains:	P53
Protein Families:	Druggable Genome, Stem cell - Pluripotency, Transcription Factors
Protein Pathways:	Amyotrophic lateral sclerosis (ALS), Apoptosis, Basal cell carcinoma, Bladder cancer, Cell cycle, Chronic myeloid leukemia, Colorectal cancer, Endometrial cancer, Glioma, Huntington's disease, MAPK signaling pathway, Melanoma, Neurotrophin signaling pathway, Non-small cell lung cancer, p53 signaling pathway, Pancreatic cancer, Pathways in cancer, Prostate cancer, Small cell lung cancer, Thyroid cancer, Wnt signaling pathway
MW:	26.9 kDa
Gene Summary:	<p>This gene encodes a tumor suppressor protein containing transcriptional activation, DNA binding, and oligomerization domains. The encoded protein responds to diverse cellular stresses to regulate expression of target genes, thereby inducing cell cycle arrest, apoptosis, senescence, DNA repair, or changes in metabolism. Mutations in this gene are associated with a variety of human cancers, including hereditary cancers such as Li-Fraumeni syndrome. Alternative splicing of this gene and the use of alternate promoters result in multiple transcript variants and isoforms. Additional isoforms have also been shown to result from the use of alternate translation initiation codons from identical transcript variants (PMIDs: 12032546, 20937277). [provided by RefSeq, Dec 2016]</p>