

Product datasheet for **RC240269**

HSD17B13 (NM_178135) Human Tagged ORF Clone

Product data:

Product Type:	Expression Plasmids
Product Name:	HSD17B13 (NM_178135) Human Tagged ORF Clone
Tag:	Myc-DDK
Symbol:	HSD17B13
Synonyms:	HMFN0376; NIIL497; SCDR9; SDR16C3
Mammalian Cell Selection:	Neomycin
Vector:	pCMV6-Entry (PS100001)
E. coli Selection:	Kanamycin (25 ug/mL)
ORF Nucleotide Sequence:	>RC240269 ORF sequence Red=Cloning site Blue=ORF Green=Tags(s)

TTTTGTAATACGACTCACTATAGGGCGGCCGGAATTCGTCGACTGGATCCGGTACCGAGGAGATCTGCC
GCC**CGGATCGCC**

ATGAACATCATCCTAGAAATCCTTCTGCTTCTGATCACCATCATCTACTCCTACTTGGAGTCGTTGGTGA
AGTTTTTCATTTCCTCAGAGGAGAAAATCTGTGGCTGGGGAGATTGTTCTCATTACTGGAGCTGGGCATGG
AATAGGCAGGCAGACTACTTATGAATTTGCAAAACGACAGAGCATATTGGTTCTGTGGGATTAATAAG
CGCGGTGTGGAGGAACTGCAGCTGAGTGCCGAAAAGTGGCTCACTGCCGATGCGTATGTGGTAGACT
GCAGCAACAGAGAAGAGATCTATCGCTCTAAATCAGGTGAAGAAAGAAGTGGGTGATGTAACAATCGT
GGTGAATAATGCTGGGACAGTATATCCAGCCGATCTTCTCAGCACCAAGGATGAAGAGATTACCAAGACA
TTTGAGGTCAACATCCTAGGACATTTTTGGATCAGAAAAGCACTTCTCCATCGATGATGGAGAGAAATC
ATGGCCACATCGTCACAGTGGCTTCAGTGTGCGGCCACGAAGGGATTCTTACCTCATCCCATATTGTTTC
CAGCAAAATTTGCCGCTGTTGGCTTTACAGAGGTCTGACATCAGAACTTCAGGCCTTGGGAAAACTGGT
ATCAAAACCTCATGTCTCTGCCAGTTTTTGTGAATACTGGGTTACCAAAAATCCAAGCACAAGGTTTC
TTCCTGAACGCGCCTCAGCGATTTAAATCGTATGCAGAAATTTCAATTTGAAGCAGTGGTTGGCCACAA
AATCAAAATGAAA

ACGCGTACGCGGCCGCTCGAGCAGAAACTCATCTCAGAAGAGGATCTGGCAGCAAATGATATCCTGGATT
ACAAGGATGACGACGATAAGGTTTAA



[View online »](#)

Protein Sequence: >RC240269 protein sequence
Red=Cloning site Green=Tags(s)

MNIILEILLLLITIIYSYLESLVKFFIPQRRKSVAGEIVLITGAGHGIGRQTTYEFAKRQSI LVLWDINK
 RGVEETAAECKRLGVT AHAYVVDCSNREEIYRSLNQVKEVGDVTIVVNNAGTVYPADLLSTKDEEITKT
 FEVNILGHFWITKALLPSMMERNHGHIVTASVCGHEGIPYLIPYCSSKFAAVGFHRLTSELQALGKTG
 IKTSCLCPVVFVNTGFTKNPSTRFLPERASAILNRMQNIQFEAVVGHKIKMK

TRTRPLEQKLISEEDLAANDILDYKDDDDKV

Restriction Sites: SgfI-MluI

Cloning Scheme:

Cloning sites used for ORF Shuttling:



* The last codon before the Stop codon of the ORF

ACCN: NM_178135

ORF Size: 783 bp

OTI Disclaimer: The molecular sequence of this clone aligns with the gene accession number as a point of reference only. However, individual transcript sequences of the same gene can differ through naturally occurring variations (e.g. polymorphisms), each with its own valid existence. This clone is substantially in agreement with the reference, but a complete review of all prevailing variants is recommended prior to use. [More info](#)

OTI Annotation: This clone was engineered to express the complete ORF with an expression tag. Expression varies depending on the nature of the gene.

Components: The ORF clone is ion-exchange column purified and shipped in a 2D barcoded Matrix tube containing 10ug of transfection-ready, dried plasmid DNA (reconstitute with 100 ul of water).

Reconstitution Method:

1. Centrifuge at 5,000xg for 5min.
2. Carefully open the tube and add 100ul of sterile water to dissolve the DNA.
3. Close the tube and incubate for 10 minutes at room temperature.
4. Briefly vortex the tube and then do a quick spin (less than 5000xg) to concentrate the liquid at the bottom.
5. Store the suspended plasmid at -20°C. The DNA is stable for at least one year from date of shipping when stored at -20°C.

RefSeq: [NM_178135.5](#), [NP_835236.2](#)

RefSeq Size: 2368 bp

RefSeq ORF: 903 bp

Locus ID: 345275

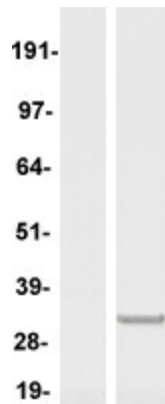
UniProt ID: [Q7Z5P4](#)

Cytogenetics: 4q22.1

Protein Families: Druggable Genome, Secreted Protein, Transmembrane

MW: 29.1 kDa

Product images:



Western blot validation of overexpression lysate (Cat# [LY440269]) using anti-DDK antibody (Cat# [TA50011-100]). Left: Cell lysates from untransfected HEK293T cells; Right: Cell lysates from HEK293T cells transfected with RC240269 using transfection reagent MegaTran 2.0 (Cat# [TT210002]).