

Product datasheet for **RC240205**

RICTOR (NM_001285439) Human Tagged ORF Clone

Product data:

Product Type:	Expression Plasmids
Product Name:	RICTOR (NM_001285439) Human Tagged ORF Clone
Tag:	Myc-DDK
Symbol:	RICTOR
Synonyms:	AVO3; hAVO3; PIA
Vector:	pCMV6-Entry (PS100001)
E. coli Selection:	Kanamycin (25 ug/mL)
Cell Selection:	Neomycin
ORF Nucleotide Sequence:	>RC240205 representing NM_001285439 Red=Cloning site Blue=ORF Green=Tags(s)

TTTTGTAATACGACTCACTATAGGGCGGCCGGAATTCGTCGACTGGATCCGGTACCGAGGAGATCTGCC
GCC**CGATCGCC**

ATGGCGGCATCGGCCGCGCCGCTCTCTGAAGAACCTCCGAGTACGAGGGCGGAATGACAGCGCGGAGG
AGAACGTCCCCTGGATCTGACCCGAGAACCTTCTGATAACTTAAGAGAGATTCTCCAAATGTGCCAG
ATTGCAGGGAGTATCAAATATGAGAAAGCTAGGCCATCTGAATACTTTACTAAGCTTCTTTGTGATATT
GGCCACAGTGAAGAAAAGTGGCTTTCACTATGAGGATATCATAATTTGTTGCGGTTAGCTTTATTAA
ATGAAGCAAAAAGTGCAGCAGCAGGGCTACGAGCGCTTCGATATCTCATCCAAGACTCCAGTATTCT
CCAGAAGGTGCTAAAATTGAAAGTGGACTATTTAATAGCTAGGTGCATTGACATACAACAGAGCAACGAG
GTAGAGAGGACACAAGCACTTCGATTAGTCAGAAAAGATGATTACTGTGAATGCTTCTTGTTCCTAGTT
CTGTGACCAACTCATTAAATGTCAGTTGGAAATGATGGACTTCAAGAAAGAGACAGAATGGTCCGAGCATG
CATTGCCATTATCTGTGAAGTACACTTCAGAAATCCAGAGGTGGTGGCCCTTCGAGGTGGACTAACACC
ATCTTGAAAAATGTGATCGATTGCCAATTAAGTCGAATAAATGAGGCCCTAATTACTACAATTTTGACCC
TTCTTAATCATCCAAGACTCGACAGTATGTGCGAGCTGATGTAGAATTAGAGAGAATTTTAGCACCTA
TACTGATTTTCACTACAGACATAGTCCAGATACAGCTGAAGGACAGCTCAAAGAAGACAGAGAAGCACGA
TTTCTAGCCAGTAAAATGGGAATCATAGCAACATTCCGATCATGGCAGGTATTATTAATTTATGTAAC
CTGAAATTCTGGGATCCAGTCTCTAATAGGAGTACTTTGCATACCAAATATGGAATAAGGCGAGGTCT
ACTTGAAGTGCTTATGATATATTTGCTTCTCTACCTGTTGTGACTGAGGAGTTCATAGAAGCACTA
CTCAGTGTAGATCCAGGGAGGTTCCAAGACAGTTGGAGGCTTTCAGATGGCTTTGTGGCAGCTGAGGCAA
AAACTATTTCTCCTCATCGTGCCAGATCCAGGCCAGACCTCATGGATAATTTTGGCACTGATACTCTC
TGCATTTATTCGTAATGGACTTTTAGAGGGTCTAGTTGAAGTGATAACAAACAGTGATGATCATATCTCA
GTTAGAGCTACCATCCTTTTAGGAGAGCTTTTACATATGGCAAACACAATTCTTCTCATTACATAGCC
ATCATTTACACTGCTTGCCAACCCTAATGAATATGGCTGCATCCTTTGATATCCCAAGGAAAAGAGACT
GCGAGCCAGTGCAGCCTTGAAGTGTAAAACGCTTCCATGAAATGAAGAAACGAGGACCTAAGCCTTAT
AGTCTTCAATTTAGACCACATTATTCAGAAAGCAATTGCAACACACCAGAAACGGGATCAGTATCTCCGAG



[View online »](#)

TTCAGAAAGATATATTTATCCTTAAGGATACAGAGGAAGCTCTTTTAATTAACCTTAGAGATAGCCAAGT
 CCTTCAACATAAAGAGAATCTTGAATGGAATTGGAATCTTATAGGGACCATTCTTAAGTGGCCAAATGTA
 AATCTAAGAACTATAAAGATGAACAGTTACACAGGTTGTACGAAGACTACTTTATTTTACAAGCCCA
 GCAGTAAATTATATGCCAACCTGGATCTGGATTTTGCCAAAGGCCAAACAGCTCACGGTTGTAGGTTGCCA
 GTTTACAGAATTTCTTCTGAATCTGAAGAGGATGGGCAAGGCTACTTAGAAGATCTAGTAAAGGATATT
 GTTCAGTGGCTCAATGCTTCATCTGGAATGAAACCCGAAAAGAAGTCTTCAAAAATAATGGTTTATTGACCA
 CCCTTAGTCAACACTACTTTTTATTTATTGGAACACTTTCTTGCCACCCTCATGGAGTTAAAATGCTGGA
 AAAATGCAGTGTATTTTCAGTGTCTCCTTAATCTTTGCTCCTTGAAAAACCAAGATCACTTGCTAAAACCT
 ACTGTTTCTAGCTTGACTATAGCAGAGATGGATTGGCTAGAGTCATCCTTTCCAAAATTTAACTGCAG
 CTAAGTGCCTGCAGACTCTATGCAACAAAACATTTAAGGGTATTATTGAGAGCTAATGTTGAATTCCT
 TAATAATTGGGAATTGAGTTGTTAGTGACCCAGCTACATGATAAAAAACAAAACGATTTCTCTGAAGCT
 CTTGATATCCTCGATGAAGCATGTGAAGACAAGGCCAATCTTCATGCTCTCATTGAGTAAACAGCGT
 TATCCACCTTGAGACAAGGGTTTGTCTCCTGCTGAGATTTCTCCATTCCAAAAGGATTTTCTTA
 TCTGAATGAAAGAGGTTATGTAGCAAAACAATTGAAAAGTGGCAGAGGGAATACAACCTCCAATATGTT
 GACTTGATTGAGGAACAACCTCAATGAAGCACTTACTACTTACCGGAAGCCTGTTGATGGTGATAACTATG
 TTCGTCGGAGTAAACCAAGATTACAGCGTCTCAGCTCTACCTGCCTATACACCTTTATGGACAACACTAGT
 ACACCATAAAAACAGGCTGCCATTTGTTGGAAGTACAGAATATTATTACAGAACTCTGTCGTAATGTTGCT
 ACACCAGATTTGGATAAGTGGGAAGAAATTAAAAACTGAAAGCATCTCTTTGGGCCCTGGGAAATATCG
 GCTCATCAAAATGGGGTCTCAATTTGCTACAGGAAGAAAACGTGATTCCAGATATACTAAAACCTTGCAAA
 ACAGTGTGAAGTCTTTCCATCAGAGGGACCTGTGTATATGACTTGGGCTCATAGCTAAAACCAAAACA
 GGCTGTGATATTCTAAAATGTCACAACTGGGATGCTGTGAGGCATAGTCGCAACATCTGTGGCCAGTGG
 TTCCAGATGATGTGGAACAACCTGTAAATGAACCTTCTATATCCAAGCACTCTAAGTTGAAGTCCGGA
 GTCAACCACTCTAGACATAATAGTGAAGTGAATCTGTGCCATCGAGTATGTTTCAATTTGGAGGATGAC
 CGGTTTGGCAGCAGCTCTACTAGTACATTTTCTTGTATATCAATGAAGATACAGAGCCAACATTTTATG
 ACCGATCTGGACCATAAAGGATAAAAATTCATTCCTTTCTTTGCTTCTAGTAACTTGTGAAGAATCG
 TATCTTAAATTCGCTTACTTTGCCTAACAAAAACATCGTAGTAGCAGTATCCAAAAGGAGGAAATTA
 TCATCTGAAAGTAAAGACAAGCAACAGGCCAATCAGAACACTTACGGAGCCCAGTGTGATTTTAAATCATA
 GTGATGATTTTACACCCATATCCACTGTACAGAAAACATTACAATTAGAGACTTCATTTATGGGAAATA
 GCACATGAAGACTGGTAGTACACCAAGCATTGGAGAAAATGACTTAAAATTCACCAAGAATTTTGGT
 ACAGAGAATCACAGAGAAAATACAAGCCGAGAGAGGTTAGTAGTAAAGTTCACAGAGCTCACATATGA
 AGATACGTAGCCAAAGTTTCAATACAGACTACAACAAGTGGCATAAGTTCATGAGCTCAAGTCCCTC
 ACGAGAGACAGTAGGTGTAGATGCTACAACATATGGACACAGACTGTGGAAGCATGAGTACTGTGGTAAAT
 ACTAAAACATTAAGACAAGCCACTATTTGACGCCACAGTCTAACCATCTGTCTCTCCTCAAATCAAAT
 CGGTGTCCCTGGTGCCTCCAGGTTCTTCTCATACGCTTCTAGAAAGACAGTCCCTTAAAGCACCCCTC
 TATTGCTACAATTAAGTCTAGCAGATTGTAACCTTGTAGTACACAAGTCTAGAGATGCTTTTGGCTAT
 GCTACACTGAAAAGACTACAGCAACAAAGAAATGCATCCATCCTTATCTCACTCTGAAGCTTTGGCATCTC
 CAGCAAAAGATGTGCTATTTACTGATACCATCACCATGAAGGCCAACAGTTTTGAGTCCAGATTAACACC
 AAGCAGGATCGATTTTAAAAAGAAGCATGTCCGGGGAAATCAGGAGCTTAAAGCTACAATAACAAACAAC
 CTTTTCAGGTTTCAAGGCTTAAAGTATGCATCATTAGATAAAGAAGATTTATTGAGTCTATTAATC
 AAAATACCCTGCAACGATCTTCTCAGTCCGCTCATGGTGTCCAGTGCCACATATGGGGTTCAGATGA
 TTACATTTGCTTCTCCTCCGGTGGATATAAATGATATATTCCAGGTAAGGATATTCCCTATTTTCAG
 ACAAAAAACATACCACCACATGATGATCGAGGTGCAAGAGCATTGCCCCATGATGCAGGAGGTTCCAT
 CTGGAAGTGGAGGCTTTGTAATAAATCTTTTCACTTGTACGACAGCAGATGAGTCTTACGGAAAATAAT
 GAATTCATCCATTGAGTGCCTCTCTGTTTTAGAAAAGTACAGAAGACTGGACTACAGGAACATACA
 GATGATAACTGCCTTTATTGTGCTGTATTGAAATCTGGGTTCCAGCCCAGCAACCAACTGAGTGCAA
 TATGTAGTCACTCAGACTTTCAAGATATCCATATCTGATTGGTGTGAGCAGACTATCCATAATCCTTT
 AGAAGTGGTCCCTTAAGTTTTCGGGATTTCTGGATGCAGTGTGGGGTGTCTCAAGAAGGCTCAGCT
 AGCAGCACAAAAGCACAGAATTGTTACTAGGTGTTAAAACAATTCAGATGATACACCAATGTGCCGTA
 TACTCCTTCGCAAGAAGTCTAAGATTAGTCATTAATTTGAGTAGTTCAGTTTCAACTAAATGTATGA
 GACTGGGCTTTTAACAATTAAGGAGAAGTATCCTCAAACATTTGATGACATATGCCTTTACTCTGAGGTT
 TCCCATTTGCTGTACACTGCACATTGAGACTTCCGTGTCGGAGGTTTATACAAGAATTTTCAAGATG
 TACAGTTTCTACAAATGCATGAAGAAGCAGAGGCTGTGTTGGCAACACCACCAAGCAACCTATAGTTGA

TACATCTGCTGAATCC

ACGCGTACGCGGCCGCTCGAGCAGAACTCATCTCAGAAGAGGATCTGGCAGCAATGATATCCTGGATT
ACAAGGATGACGACGATAAGGTTTAA

Protein Sequence:

>RC240205 representing NM_001285439
Red=Cloning site Green=Tags(s)

MAAIGRGRSLKNLRVGRNDSGEENVPLDLTREPNDLREILQNVARLQGVSNMRKLGHLNFTKLLCDI
GHSEKLGPHYEDIICLRLALLNEAKEVRAAGLRALRYLIQDSSILQKVLKLVVDYLIARCIDIQQSNE
VERTQALRLVRKMITVNASLFPSSVTNSLIAVGNQGLQERDRMVRACIAIICELALQNPEVVALRGGNT
ILKNVIDCQLSRINEALITITLHLLNHPKTRQYVRADVELERILAPYDFHYRHSPTAEGQLKEDREAR
FLASKMGIATFRSWAGIINLCKPGNSGIQSLIGVLCIPNMEIRRGLLEVLVDIFRPLPVPVTEEFIEAL
LSVDPGRFQDSWRLSDGFVAEAKTILPHRARSRPDLMDNYLALILSAFIRNGLLEGLVEVITNSDDHIS
VRATILLGELLHMANTILPHSHSHLHCLPTLMNMAASFDPKEKRLRASAALNCLKRFHEMKRGPYPY
SLHLDHIIQKAIATHQKRQYLRVQKDFILKDTTEEALLINLRDSQVLQHKENLEWNNLIGTILKWPV
NLRNYKDEQLHRFVRRLLYFYKPSKLYANLDDFAKAKQLTVVGCQFTEFLLESEEDGQGYLEDLVKDI
VQWLNASSGMKPERSLQNNGLLTTLSQHYFLFIGTLSCHPHGVKMLEKCSVFQCLLNLCSLKNQDHLK
TVSSLDYSRDGLARVILSKILTAATDACRLYATKHLRVLLRANVEFFNNWGIELLVTLQHDKNKTISS
LDILDEACEDKANLHALIQMKPALSHLGDKLLLLLRFSLIPKGFSYLNERGYVAKQLEKWHREYNSKY
DLIEEQLEALTTYRKPVDGDNVRRSNQRLQRPHVYLPILHYGQLVHHKTGCHLLEVQNIITELCRNVR
TPDLKWEIEIKKLKASLWALGNIGSSNWGLNLLQEENVIPDILKLAQCEVLSIRGTCVYVGLIAKTKQ
GCDILKCHNWDVHRSRKHLWPVVPDDVEQLCNELSSIPSTLSLNSESTSSRHSESESVSSMFILEDD
RFGSSSTSTFFLDINEDTEPTFYDRSGPIKDKNSFPFFASSKLVKNRILNSLTLPNKKHRSSDPKGGK
SSEKTSNRRIRTLTEPSVDFNHSDDFTPISTVQKTLQLETSFMGNKHIEDTGSTPSIGENDLKFTKNFG
TENHRENTSRERLVVESSTSSHMKIRSQSFNTDTTSGISSMSSSPSRETGVVDATMTDTCGSMSTVVS
TKTIKTSHYLTPQSNHLSKSNVSLVPPGSSHTLPRRAQSLKAPSIATIKSLADCNFSYTSRDAFGY
ATLKRLLQQRMHPSLSHSEALASPAKDVLFDTITMKANSFESRLTPSRIDFKKKHVGGIRSLRPTITNN
LFRFMKALSYASLDKEDLLSPINQNTLQRSSSVRSMVSSATYGGSDDYIGLALPVDINDIFQVKDIPYFQ
TKNIPPHDDRGARAF AHDAGGLPSGTGGLVKNSFHLLRQQMSL TEIMNSIHSASLFLESTEDTGLQEHT
DDNCLYCVIEILGFQPSNQLSAICSHSDFQDIPYSDWCEQTIHNPLEVVPKFSGSGSDGVSQEGSA
SSTKSTELLGKTIPTDDTPMCRILLRKEVLRVINLSSSVSTKCHETGLLLTIKEYPQTFDDICLYSEV
SHLLSHCTFRLLPCRRFIQELFQDVQFLQMHEEAELAVLATPPKQPIVDTSAES

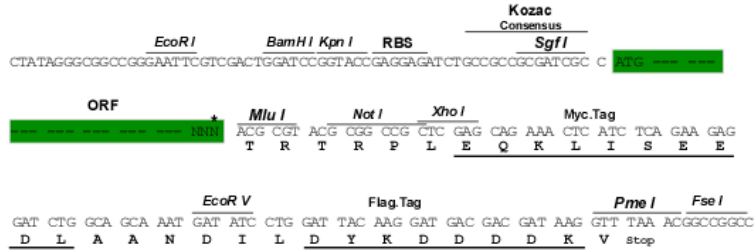
TRTRPLEQKLISEEDLAANDILDYKDDDDKV

Restriction Sites:

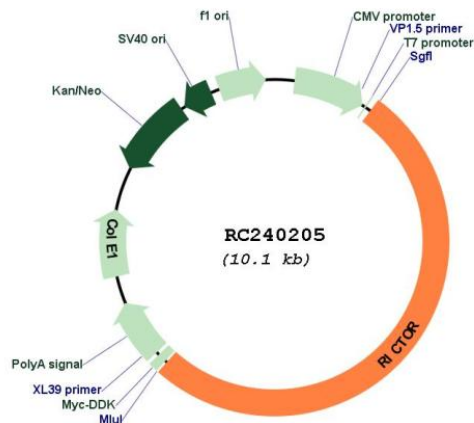
Sgfl-MluI

Cloning Scheme:

Cloning sites used for ORF Shuttling:



* The last codon before the Stop codon of the ORF

Plasmid Map:


ACCN: NM_001285439

ORF Size: 5196 bp

OTI Disclaimer: The molecular sequence of this clone aligns with the gene accession number as a point of reference only. However, individual transcript sequences of the same gene can differ through naturally occurring variations (e.g. polymorphisms), each with its own valid existence. This clone is substantially in agreement with the reference, but a complete review of all prevailing variants is recommended prior to use. [More info](#)

OTI Annotation: This clone was engineered to express the complete ORF with an expression tag. Expression varies depending on the nature of the gene.

Components: The ORF clone is ion-exchange column purified and shipped in a 2D barcoded Matrix tube containing 10ug of transfection-ready, dried plasmid DNA (reconstitute with 100 ul of water).

Reconstitution Method:

1. Centrifuge at 5,000xg for 5min.
2. Carefully open the tube and add 100ul of sterile water to dissolve the DNA.
3. Close the tube and incubate for 10 minutes at room temperature.
4. Briefly vortex the tube and then do a quick spin (less than 5000xg) to concentrate the liquid at the bottom.
5. Store the suspended plasmid at -20°C. The DNA is stable for at least one year from date of shipping when stored at -20°C.

RefSeq: [NM_001285439.1](#), [NP_001272368.1](#)

RefSeq Size: 9629 bp

RefSeq ORF: 5199 bp

Locus ID: 253260

UniProt ID: [Q6R327](#)

Cytogenetics: 5p13.1

Protein Pathways: mTOR signaling pathway

MW: 195.5 kDa

Gene Summary: RICTOR and MTOR (FRAP1; MIM 601231) are components of a protein complex that integrates nutrient- and growth factor-derived signals to regulate cell growth (Sarbassov et al., 2004 [PubMed 15268862]).[supplied by OMIM, Mar 2008]