

## Product datasheet for **RC240181**

### **BAI2 (ADGRB2) (NM\_001294335) Human Tagged ORF Clone**

#### Product data:

**Product Type:** Expression Plasmids  
**Product Name:** BAI2 (ADGRB2) (NM\_001294335) Human Tagged ORF Clone  
**Tag:** Myc-DDK  
**Symbol:** ADGRB2  
**Synonyms:** BAI2  
**Vector:** pCMV6-Entry (PS100001)  
**E. coli Selection:** Kanamycin (25 ug/mL)  
**Cell Selection:** Neomycin  
**ORF Nucleotide Sequence:** >RC240181 representing NM\_001294335  
Red=Cloning site Blue=ORF Green=Tags(s)

TTTTGTAATACGACTCACTATAGGGCGGCCGGAATTCGTCGACTGGATCCGGTACCGAGGAGATCTGCC  
 GCCGCGATCGCC

ATGGAGAATACAGGTTGGATGGGCAAGGGACATAGGATGACCCAGCCTGTCCCCTTACTGTCTGTGA  
 TTCTGTCCCTGCGCTGGCCACCGCCTTCGACCCGCCCCAGTGCCTGCTCTGCCCTGGCTCGGGTGT  
 GCTCTACGGGCTTCTCGCTGCAGGACCTTTTCTACCATCGCCTCGGGCTGCTCTGGACCTGGAG  
 AACCTGACCCACCAAGTACTCCTCTACCTGCGCTTCAACCGCCAGGAGCAGGTGTGCGCACACTTTG  
 CCCCCGCTGTGCCCTGGACCACTACCTGGTCAACTTTACCTGCCTGCGGCCTAGCCCCGAGGAGGC  
 GGTGGCCAGGCGGAGTCAGAGGTGGGCGGCCAGAAGAGGAGGAGGCAGAGGCGGCAGCGGGTGGAG  
 CTGTGCAGCGGCTCAGGCCCTTTACCTTCTGCACTTCGACAAGAACTTCGTGCAGCTGTGCCTGTGCG  
 CTGAGCCCTCCGAGGCCCGCGCTGCTGGCGCCGCTGCCCTAGCCTTCCGCTTGTGCGAGTCTTGTCT  
 CATCAACAACAACAACCTAGCCAATTCACCTGTGGTGTGCTCTGCCGCTGGAGTGAGGAGTGTGGCCG  
 GCTGCCGCGAGGGCTGCGGCTTTGCTCAGCCAGGCTGCAGTGCCTGGAGAGGCGGGGCCGCTCCA  
 CCACCACACATCTCAGGCCCTCCTGCTGCCACACCTGTCCAATGCCCTGGTGCCCGGGGCCAGC  
 CCCACCTGCTGAGCCGATTTGCACTCGGGGAGCAGCAATGATCTGTTCAACAACCGAGATGAGATATGGT  
 GAGGAGCCGGAAGAGGAACCGAAAGTGAAAACCAAGTGGCCGAGGTCTGCAGATGAGCCTGGGCTATA  
 TGGCGCAGACAGGCGACCCGCGGCTGAGGAGTGGTCCCGTGGAGCGTGTGTTCCCTGACGTGTGGCA  
 GGGTCTGCAGGTGCGGACCCGCTCCTGTGTGCTCCCCATGGGACCTGTGCAGCGGGCCCTGCGG  
 GAGACCAGGCCCTGCAACAATTCAGCCACCTGCCAGTGCACGGCGTGTGGGAGGAGTGGGGTCTGGA  
 GCCTGTGCTCCCGCAGCTGCGGGCGGGGTCCCGAGCCGGATGCGGACCTGCGTCCCCCCAGCACGG  
 CGCAAGGCTGCGAGGGTCTGAGCTGCAGACTAAGCTCTGCAGTATGGCTGCCTGCCCGTGGAAAGGC  
 CAGTGGTTAGAATGGGGTCCCTGGGGCCATGCTCCACGTCTGTCCAATGGGACCAACAGCGCAGCC  
 GGAAGTGCAGCGTGGCGGCCAGCCTGGGCCACATGCACGGGTGCCCTACTGACACCCGGGAGTGCAG  
 CAACCTCGAGTGCCCGCCACTGATAGCAAGTGGGGCCATGGAATGCGTGGAGCCTGTGCTCTAAGACG  
 TGTGACACAGGCTGGCAGCGCCGCTCCGCATGTGCCAGGCCACGGGCACGCAGGGCTACCCTGCGAGG



GCACCGGAGAGGAGGTGAAGCCTTGTAGTGAGAAGAGGTGTCCAGCCTTCCATGAGATGTGCAGGGATGA  
 GTACGTGATGCTGATGACGTGGAAGAAGGCAGCTGCTGGCGAGATCATCTACAACAAGTGCCCCCGAAT  
 GCCTCAGGGTCTGCCAGCCGCCGTGTCTCCTCAGTGCCCAAGGCGTGGCGTACTGGGGGTGCCAGCT  
 TTGCTCGCTGCATCTCCCATGAGTACCGCTACCTGTATCTGTCACTTAGGGAGCACCTGGCCAAGGGGCA  
 GCGCATGCTGGCAGGCGAGGGCATGTGCGAGGTGGTGGCAGCCTGCAGGAGCTACTGGCCCGCGCACC  
 TACTATAGTGGGACCTGCTCTTCTCTGTGGACATTCTGAGGAATGTCACTGACACCTTTAAGAGGGCCA  
 CCTACGTGCCCTCGGCTGATGATGTGACGCGCTTCTCCAGGTGGTGGCTTCCAGGTGGTGGGAAAA  
 CAAGGAGAAGTGGGACGATGCTCAGCAGGTGTCCCTGGCTCTGTGCACCTGCTCCGTGCTGGAGGAC  
 TTCATTACCTGGTGGGCGATGCTCTCAAGGCCTTCCAGAGCTCTCTGATTGTACACAGATAATCTAGTGA  
 TCAGCATTAGCGAGAGCCCGTCTCAGCTGTGTCCAGTGACATCACGTTCCCATGCGGGGCCGCCGGG  
 CATGAAGGACTGGGTGGGCACTCAGAGGACCGCCTTCTCCTGCCAAGGAGGTGCTCAGCCTCTCTCC  
 CCAGGGAAGCCAGCCACATCTGGGGCAGCAGCCAGCCTGGCAGGGGGAGGGGCCAGGAACGGTGCCTC  
 CTGGCCAGGCCACTCCACCAGCGCCTCTCCAGCAGACCCTGATGAGTCTCTCTACTTTGTGATCGG  
 TGCTGACTCTACCGCACCTTGGCCTCATCTGCCGCTCCAGGCCCGCTGGCCGTACATCCCGG  
 GTGATGACAGTACTGTGCGCCCCCTACCCAGCCTCCAGCTGAGCCCCATCACTGTGGAGCTCTCT  
 ACATCATCAATGGGACCACGGATCCCCATTGCGCCAGCTGGGACTACTCCAGAGCAGATGCCAGCTCAGG  
 AGACTGGGACACTGAAAATTGCCAGACCCTGGAGACCCAGGCAGCTCACACCCGCTGCCAGTGCACGAC  
 CTGTCCACCTTTGCTGTACTAGCCAGCCGCCAAGGACCTGACCTGGAGCTGGCGGGCTCCCCCTCGG  
 TCCCCCTGGTGATCGGCTGTGAGTGTGCTGATGGCGTGTCAACCCTGCTCGCCATCTATGCCGCTT  
 TTGGAGTTTCATAAAATCTGAACGCTCCATCATCTTGTGAACCTTCTGCCTGTCCATCTTGGCATCAAC  
 ATCCTGATCCTCGTGGCCAGTCCCGGTGCTGAGCAAGGGCGTGTGACCATGACGGTGCCTTCTCTGC  
 ACTTCTTCTTCTCTCTCTCTTGTGGTGTACCGAGCCCTGGCAGTCTACCTGGCTGTCTTGG  
 GCGGATGCGCACCCGCTCGTTGCAAGCGCTTCTCTGCTGGGCTGGGCTGTGCTGCCCTGGTGGTGG  
 GCGGTGTCTGTTGGCTTACCCGAACGAAAGGATACGGTACATCCAGCTACTGCTGGCTCTCCCTGGAGG  
 GCGGCCTGCTCTACGCTTGTGGGCCCTGCAGCCGTCATTGCTGCTGGTGAACATGCTCATCGAATCAT  
 CGTCTTCAACAAGCTCATGGCAGTGTGGCATCTCCGACAAATCCAAGAAGCAGAGGGCCGGTGGAG  
 CGGTGCCCTGGGCCAGCCTGCTCTCCCTGCTCAGCGTGTGGAGCGGTCCCCAGCCCCCTGCTCAGCT  
 CAGCCTCGGCCAGGAACCCATGGCCTCACTCTGGAGCTCTGCGTGGTGTGCCCTGCTGGCGCTCAC  
 CTGGATGTCTGCCGCTCTGGCTATGACAGACCCGCTTCCGCTCTTCCAGGCCCTTTTGTGTCTTC  
 AACTCCGCGCAGGGCTTTGTCACTGCTGTGCACTGCTTCTGCGCCAGAGGTCCAGGATGTGGTGA  
 AGTGCCAGATGGGGGTGTCCGGCTGATGAGAGCGAAGACTCCCCTGACTCGTGAAGAACGGGAGCT  
 GCAGATCCTGTGACAGCTTTGAAAAGGATGTGGATCTGGCTTGTCAACAGTGCTGTTCAAGGAGTCAAC  
 ACTTGCAACCCGTCACCATCACGGGCACACTATCCCGCCTGTCCCTGGATGAGGATGAGGAGCCCAAGT  
 CCTGCCTCGTGGGCCCTGAGGGCAGCCTCAGCTTCTCACCAGTGCCTGGGAATATCCTGGTGGCCATGGC  
 AGCCTCACCAGGGCTGGGGGAGCCTCCGCCCCACAGGAGGCCAACCCCTGTTTACATGTGTGGGAGGGT  
 GGCTGCGGCAGCTGGACCTCACATGGCTGCGGCCACTGAGCCAGGCTCTGAGGGAGACTACATGGTGC  
 TGCCCCGGCGACTTTGAGCCTGCAGCCTGGCGGTGGGGTGGAGGTGGTGGATGCCCCAGGGCCCCG  
 GCCGAGGGGACCCCCGGCGAGCTGCCAAGACAGTGGCCCACTGAAGGCTACCCAGCTTCTGTCTCC  
 GTGGACCACTCGGGCTGGGGCTGGGCCCTGCCTATGGATCTCTCAGAATCCCTATGGAATGACCTTCC  
 AACCGCCACCGCCGACCCAGCGCCCGCAAGTGCCCGAGCCAGGGGAGCGCAGCCGGACCATGCCTCG  
 CACCGTGCCCGGCTCTACCATGAAGATGGGCTCCCTGGAGCGAAAGAAATTACGGTATTCAGACCTGGAC  
 TTTGAGGTGATGCACACCCGAAACGGCATTGAGAACTCTACCACGAGCTCAACCAGAAGTTCACACTT  
 TCGACCGTACCGCAGCCAGTCCACGGCAAGAGGGAGAAGCGGTGGAGTGTGCTCTCGGGTGGGCGAGC  
 CGAGCGGAGCGTGTGCACCGATAAGCCAGCCCTGGGAGCGCCCCAGCTTGTCCCAACATCGGCGCCAT  
 CAGAGCTGGAGCACCTTCAAATCTATGACTGGGCTCGTGGCCCCAAGCCCCGAGAACGGCTGACTC  
 TGCACCGGCAGCAGCCTGGGAGCCACAGAACCACCGGATGGTACTTCCAGACAGAGGTG

ACGCGTACGCGGCCGCTCGAGCAGAACTCATCTCAGAAGAGGATCTGGCAGCAAATGATATCCTGGATT  
 ACAAGGATGACGACGATAAGGTTTAA

**Protein Sequence:** >RC240181 representing NM\_001294335  
 Red=Cloning site Green=Tags(s)

MENTGWMGKGRMTPACPLLLSVILSLRLATAFDPAAPSACSALASGVLYGAFSLQDLFPTIASGCSWTLE  
 NPDPTKYSLYLRFNREQVCAHFAPRLPLDHYLVNFTCLRPSPEEAVAQAESEVGRPEEEEEAEAAAGLE  
 LCSGSGPFFTLHFDFKNFVQLCLSAEPSEAPRLAPAALAFRFVEVLLINNNSQF TCGVLCRWSEECGR  
 AAGRACGFAQPGCSCPGEAGAGSTTTTSPGPPAAHTLSNALVPGGPAPPAEADLHSGSSNDLFTTEMRYG  
 EEPPEEPKVKTQWPRSADEPGLYMAQTGDPAEEWSPWSVCSLTCGQGLQVRTRSCVSSPYGTLCSGPLR  
 ETRPCNNSATCPVHGVEEWGSWSLCSRSCGRGSRMRMTCVPPQHGGKACEGPELQTKLCSMAACPVGE  
 QWLEWGPWGPCSTSCANGTQQRSRKCSVAGPAWATCTGALTDTRECSNLECPATDSKWGPWNAWSLCSKT  
 CDTGWQRFRMCQATGTQGYPCGTGEEVKPCSEKRCPAFHEMCRDEYVMLMTWKKAAAGEIIYNKCPPN  
 ASGSASRRCLLSAQGVAYWGLPSFARCI SHEYRYLYLSLREHLAKQRMLAGEGMSQVVRSLQELLARRT  
 YYSGDLLFSVDILRNVTDTFKRATYVPSADDVQRFFQVVSFVMDAENKEKWDDAQVSPGSVHLRVED  
 FIHLVGDALKAFQSSLIVTDNLVISIQREPVS AVSSDITFPMRGRGMKDWVRHSEDRLF PKEVLSS  
 PGKPATSGAAGSPGRGRPGTVPPGPGHSHQRLLPADPDESSYFVIGAVLYRTLGLILPPRPPLAVTSR  
 VMTVTVRPPTQPPAEPLITVELSYIINGTTDPHCASWDYSRADASSGDWDTENCQLETQAHTRCQCQH  
 LSTFAVLAQPPKDLTLELAGSPSVPLVIGCAVSCMALLTL LAIYA AFWRFIKSERSIILLNFCLSLASN  
 ILILVQGSRVLSKGVCTMTAAFLHFFFLSSFCWVLTEAWQSYLAVIGMRMTRLVRKRFLCLGWLPALVV  
 AVS VGFTRTKGYGTSSYCWLSLEGLLYAFVGPAAVIVLVNMLIGIIVFNKLMARDGISDKSKQRAGSE  
 RCPWASLLLPACSACGAVSPPLLSSASARNAMASLWSSCVLPLLALTWMSAVLAMTDRRSVLFQALFAVF  
 NSAQGFVITAVHCFLRREVQDVVKCQMVGCRADESESDSPDCKNGQLQILSDFEKDVLACQTVLFKEVN  
 TCNPSTITGTL SRLSLDEDEEPKSCLVGPEGLSF SPLPGNILVPMAASPGLGEP PPPQEANPVYMCGE  
 GLRQLDLTWRPTEPGSEGDYMLPRRTL SLQPGGGGGGGEDAPRARPEGTPRRAAKTVAHTEGYPSFLS  
 VDHSGLGLGPAYGSLQNPYGMFTQPPPPPTSARQVPEPGRSRTMPRTVPGSTMKMGSLERKRLRYSDLD  
 FEVMHTRKRHSELYHEL NQKFHTFD RYRSQSTAKREKRWSVSSGAAERSVCTDKPSPGERPSLSQHRRH  
 QSWSTFKSMTLGS LPPKPRERLTLHRAAAWEPT EPPDGDGFQTEV

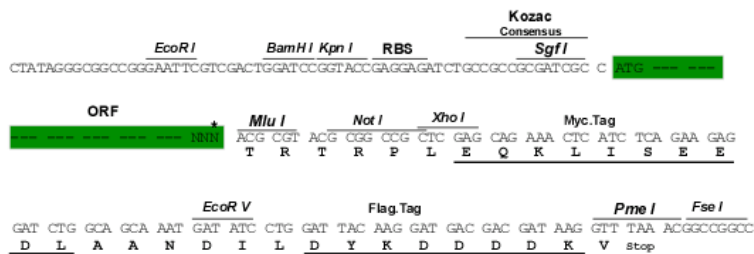
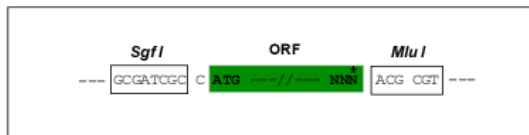
TRTRPLEQKLISEEDLAANDILDYKDDDDKV

**Restriction Sites:**

SgfI-MluI

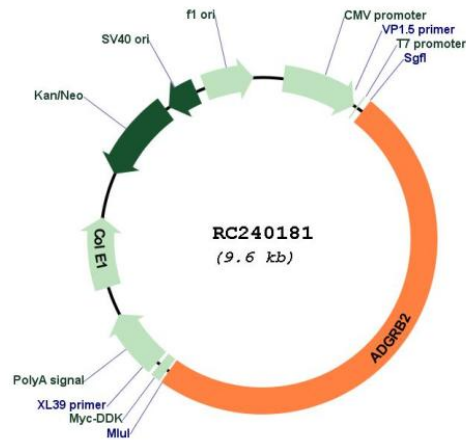
**Cloning Scheme:**

Cloning sites used for ORF Shuttling:



\* The last codon before the Stop codon of the ORF

## Plasmid Map:



ACCN: NM\_001294335

ORF Size: 4752 bp

OTI Disclaimer: The molecular sequence of this clone aligns with the gene accession number as a point of reference only. However, individual transcript sequences of the same gene can differ through naturally occurring variations (e.g. polymorphisms), each with its own valid existence. This clone is substantially in agreement with the reference, but a complete review of all prevailing variants is recommended prior to use. [More info](#)

OTI Annotation: This clone was engineered to express the complete ORF with an expression tag. Expression varies depending on the nature of the gene.

Components: The ORF clone is ion-exchange column purified and shipped in a 2D barcoded Matrix tube containing 10ug of transfection-ready, dried plasmid DNA (reconstitute with 100 ul of water).

Reconstitution Method:

1. Centrifuge at 5,000xg for 5min.
2. Carefully open the tube and add 100ul of sterile water to dissolve the DNA.
3. Close the tube and incubate for 10 minutes at room temperature.
4. Briefly vortex the tube and then do a quick spin (less than 5000xg) to concentrate the liquid at the bottom.
5. Store the suspended plasmid at -20°C. The DNA is stable for at least one year from date of shipping when stored at -20°C.

RefSeq: [NM\\_001294335.2](#)

RefSeq Size:	5455 bp
RefSeq ORF:	4755 bp
Locus ID:	576
UniProt ID:	<a href="#">O60241</a>
Cytogenetics:	1p35.2
Protein Families:	Druggable Genome, Transmembrane
MW:	173 kDa
Gene Summary:	This gene encodes a a seven-span transmembrane protein that is thought to be a member of the secretin receptor family. The encoded protein is a brain-specific inhibitor of angiogenesis. The mature peptide may be further cleaved into additional products (PMID:20367554). Alternative splicing results in multiple transcript variants. [provided by RefSeq, Jun 2014]