

Product datasheet for **RC240177**

EIF4G1 (NM_001291157) Human Tagged ORF Clone

Product data:

Product Type: Expression Plasmids
Product Name: EIF4G1 (NM_001291157) Human Tagged ORF Clone
Tag: Myc-DDK
Symbol: EIF4G1
Synonyms: EIF-4G1; EIF4F; EIF4G; EIF4GI; P220; PARK18
Vector: pCMV6-Entry (PS100001)
E. coli Selection: Kanamycin (25 ug/mL)
Cell Selection: Neomycin
ORF Nucleotide Sequence: >RC240177 representing NM_001291157
Red=Cloning site Blue=ORF Green=Tags(s)

TTTTGTAATACGACTCACTATAGGGCGCCGGAATTCGTCGACTGGATCCGGTACCGAGGAGATCTGCC
GCCGCGATCGCC

ATGAACACGCCTTCTCAGCCCCGCCAGCACTTCTACCCTAGCCGGGCCAGCCCCGAGCAGTGCAGCCT
 CCCGAGTGCAGAGTGCAGCCCCGCCCCGCTGGCCAGCTGCCATGTCTACCCTGCTGGATCCCAAGT
 AATGATGATCCCTTCCCAGATCTCTACCCAGCCTCCCAGGGGGCTACTACATCCCTGGACAGGGGCGT
 TCCACATACGTTGTCCCACACAGCAGTACCCTGTGCAGCCAGGAGCCCCAGGCTTCTATCCAGGTGCAA
 GCCCTACAGAATTTGGACCTACGCTGGCGCTACTATCCAGCCAAGGGGTGCAGCAGTTTCCCACTGG
 CGTGGCCCCGCCCCAGTTTTGATGAACCAGCCACCCAGATTGCTCCCAAGAGGGAGCGTAAGACGATC
 CGAATTCGAGATCCAAACCAAGGAGGAAAGGATATCACAGAGGAGATCATGTCTGGGGCCCCGCACTGCCT
 CCACACCCACCCCTCCCAGACGGGAGGCGGTCTGGAGCCTCAAGCTAATGGGGAGACGCCCCAGGTTGC
 TGTCATTGTCCGGCCAGATGACCGGTACAGGGAGCAATCATTGCTGACCGGCCAGGGTGCCTGGCCCA
 GAGCATAGCCCTCAGAATCCCAGCCTTCGTCGCTTCTCCGACCCCATCACCATCCCCAGTCTTGAAC
 CGGGTCTGAGCCTAATCTCGCAGTCTCTCTATTCTGGGACACTATGACAACATAACAAATGCTGT
 AGAAGAATCAACCCCATCTCCCGTGAACCTGGGAGCCATATCGCCTCTCTCCAGAACCCACTCCTCTC
 GCCGAACCCATACTGGAAGTAGAAGTGACACTTAGCAAACCGGTTCCAGAATCTGAGTTTTCTTCCAGTC
 CTCTCCAGGCTCCACCCCTTTGGCATCTCACACAGTGGAAATTCATGAGCCTAATGGCATGGTCCCATC
 TGAAGTCTGGAACAGAGGTGGAGTCAAGCCCAGAGCTTGCTCTCCCCAGCTTGCCCCCTCCGAATCC
 CCTGTGCCATTGCTCCAACCTGCCAACCTGAGGAACTGCTCAACGGAGCCCCCTCGCCACCAGTGTGG
 ACTTAAGCCAGTCAGTGAGCCAGAGGAGCAGGCCAAGGAGGTGACAGCATCAATGGCGCCCCCACCAT
 CCCCTCTGCTACTCCAGTACGGCTCCTCAGCTACTTCCCAGCTCAGGAGGAGAAATGGAAGAAGAA
 GAAGAAGAGGAAGAAGGAGAAGCAGGAGAAGCAGGAGAAGCTGAGAGTGAGAAAGGAGGAGGAACTGC
 TCCCCCAGAGAGTACCCCTATTCCAGCCAACTTGTCTCAGAATTTGGAGGCAGCAGCAGCACTCAAGT
 GGCAGTATCTGTGCCAAAGAGGAGACGGAAAATTAAGGAGCTAAATAAGAAGGAGGCTGTTGGAGACCTT
 CTGGATGCCTTCAAGGAGGCAACCCGGCAGTACCAGAGGTGAAAATCAGCCTCCTGCAGGCAGCAATC



CAGGCCAGAGTCTGAGGGCAGTGGTGTGCCCCACGTCCTGAGGAAGCAGATGAGACCTGGGACTCAAA
GGAAGACAAAATTCACAATGCTGAGAACATCCAGCCCAGGGAACAGAAAGTATGAATATAAGTCAGATCAG
TGGAAAGCCTCTAAACCTAGAGGAGAAAAACGTTACGACCGTGAGTTCCTGCTTGGTTTTTCAGTTCATCT
TTGCCAGTATGCAGAAGCCAGAGGGATTGCCACATATCAGTGACGTGGTCTGGACAAGGCCAATAAAAC
ACCACTGCGGCCACTGGATCCCCTAGACTACAAGGCATAAATTTGGGCCAGACTTCACTCCATCCTTT
GCCAACCTTGGCCGACAAACCTTAGCACCCGTGGGCCCAAGGGTGGGCCAGGTGGGGAGCTGCCCC
GTGGGCCGGCTGGCCTGGGACCCCGCGCTCTCAGCAGGGACCCGAAAAGAACCACGAAGATCATTGC
CACAGTGTAAATGACCGAAGATATAAACTGAACAAAGCAGAGAAAGCCTGGAAAACCCAGCAGCAAGCGG
ACGGCGGCTGATAAGGATCGAGGGGAAGAAGATGCTGATGGCAGCAAAACCCAGGACCTATTCCGCAAGG
TGCGCTCCATCCTGAATAAACTGACACCCAGATGTTCCAGCAGCTGATGAAGCAAGTGACGCAGCTGGC
CATCGACACCGAGGAACGCCTCAAAGGGTTCATTGACCTATTTTTGAGAAGGCCATTTAGAGCCCAAC
TTCTCTGTGGCTATGCCAACATGTGCCGCTGCCTCATGGCGTGAAAGTGCCCACTACGAAAAGCCAA
CAGTGACTGTGAACCTCCGAAAGCTGTTGTTGAATCGATGTCAGAAGGAGTTTGAGAAAGACAAAGATGA
TGATGAGGTTTTGAGAAGAAGCAAAAAGAGATGGATGAAGCTGCTACGGCAGAGGAACGAGGACGCTG
AAGGAAGAGCTGGAAGAGCTCGGGACATAGCCCGCGCGCTCTTAGGAATATCAAGTTTATTGGAG
AGTTGTTCAAACCTGAAGATGTTAACAGAGGCAATAATGCATGACTGTGTGGTCAAACCTGTTAAGAACA
TGATGAAGAGTCCCTTGAGTGCCTTTGTCGTCTGCTCACCACCATTGGCAAAGACCTGGACTTTGAAAA
GCCAAGCCCCGAATGGATCAGATTTCAACCAGATGAAAAAATCATTAAAGAAAAGAAGACGTCATCCC
GCATCCGCTTTATGCTGCAGGACGTGCTGGATCTGCGAGGGAGCAATTGGGTGCCACGCCGAGGGGATCA
GGGTCCCAAGACCATTGACCAGATCCATAAGGAGGCTGAGATGGAAGAACATCGAGAGCAGATCAAAGTG
CAGCAGCTCATGGCAAGGGCAGTGACAAGCGTCGGGGCGGTCTCCAGGCCCTCCCATCAGCCGTGGAC
TTCCCCTTGTGGATGATGGTGGCTGGAACACAGTCCCATCAGCAAAGGTAGCCGCCCATTTGACACCTC
ACGACTACCAAGATACCAAGCCTGGCTCCATCGATTCTAACACCAGCTCTTTGACCTGGAGGGCGCA
CTGAGCTGGGGCAAGGGCAGCAGCGGAGGCTCAGGAGCCAAAGCCCTCAGACGCAGCATCAGAAGCTGCTC
GCCAGCTACTAGTACTTTGAATCGCTTCTCAGCCCTTCAACAAGCGGTACCCACAGAAAGCACAGATAA
TAGACGTGTGGTGCAGAGGAGTAGCTTAGAGCCGAGAACGAGGCGAGAAAGCTGGAGACCGAGGAGACCGC
CTAGAGCGGAGTGAACGGGGAGGGGACCGTGGGGACCGCTTATCGTGCAGGACACCTGCTACCAAGC
GGAGCTTCAGCAAGGAAGTGGAGGAGCGGAGTAGAGAACGGCCCTCCAGCCTGAGGGGCTGCGCAAGGC
AGCTAGCCTCACGGAGGATCGGGACCGTGGGCGGGATGCCGTGAAGCGAGAAGCTGCCCTACCCCAAGT
AGCCCCCTGAAGGCGCTCTCTCTGAGGAGGAGTTAGAGAAGAAATCCAAGGCTATCATTGAGGAATATC
TCCATCTCAATGACATGAAAGAGGCAGTCCAGTGCCTGAGGAGCTGGCCTCACCTCCTTGTCTTTCAT
CTTTGTACGGCATGGTGTGAGTCTACGCTGGAGCGCAGTGCCATTGCTGCTGAGCATATGGGGCAGCTG
CTGCACCAGCTGCTCTGTGCTGGGCATCTGTCTACTGCTCAGTACTACCAAGGGTGTATGAAATCTTGG
AATTGGCTGAGGACATGGAAATTGACATCCCCACGTCGTGGCTCTACCTAGCGGAACTGGTAACACCCAT
TCTGCAGGAAGGTGGGTGCCATGGGGAGCTGTTACAGGGAGATTACAAGCCTCTGAGACCGTTGGGC
AAAGCTGCTTCCCTGTTGCTGGAGATCCTGGGCCTCCTGTGCAAAAGCATGGGTCTAAAAGGTGGGGA
CGCTGTGGCGAGAAGCCGGGCTTAGCTGGAAGGAATTTCTACCTGAAGGCCAGGACATTTGGTGCATTGCT
CGCTGAACAGAAGGTGGAGTATACCCTGGGAGAGGAGTCCGAAGCCCTGGCCAGAGGGCACTCCCCTCC
GAGGAGCTGAACAGGCAGCTGGAGAAGCTGCTGAAGGAGGGCAGCAGTAACCAGCGGTGTTGACTGGA
TAGAGGCCAACCTGAGTGAGCAGCAGATAGTATCCAACACGTTAGTTGAGCCCTCATGACGGCTGTCTG
CTATTCTGCAATTTTTTTGAGACTCCCCTCCAGTGGACGTTGCAAGTGTGAAAGCGCAGGCAAGCTG
CTGCAGAAATACCTGTGTGACGAGCAGAAGGAGCTACAGGCGCTCTACGCCCTCCAGGCCCTTGTAGTGA
CCTTAGAACAGCCTCCCAACCTGCTGCGGATGTTCTTTGACGCACTGTATGACGAGGACGTGGTGAAGGA
GGATGCCTTCTACAGTTGGGAGAGTAGCAAGGACCCCGCTGAGCAGCAGGGCAAGGGTGTGGCCCTAAA
TCTGTCACAGCCTTCTCAAGTGGCTCCGTGAAGCAGAGGAGGAGTCTGACCACAAC

ACGCGTACGCGGCCGCTCGAGCAGAACTCATCTCAGAAGAGGATCTGGCAGCAATGATATCCTGGATT
ACAAGGATGACGACGATAAGGTTTAA

Protein Sequence:

>RC240177 representing NM_001291157
 Red=Cloning site Green=Tags(s)

MNTPSQPRQHFYPSRAQPPSSAASRVQSAAPARPGPAAHVYPAGSQVMMIPSQISYPASQGAYYIPGQGR
 STYVVVPTQQYPVQPGAPGFYPGASPTTEFGTYAGAYYPAQGVQVQFPTGVAPAPVLMNQPPQIAPKRERTI
 RIRDPNQGGKDI TEEIMSGARTASTPTTPQTGGGLEPQANGETPQVAVIVRPDDRSQGAIIADRPGLPGP
 EHSPPSEQSSPSPSPVLEPGSEPNLAVLSIPGDTMTTIQMSVEESTPISRETGEPYRLSPEPTPL
 AEPILEVEVTL SKPVPESEFSSSPLQAPTPLASHTVEIHEPNGMVPSEDLPEVESSPELAPPPACPSSES
 PVIPIAPTAQPEELLNGAPSPPAVDLSPVSEPEEQAKEVTASMAPPTIPSATPATAPSATSPAQEEEMEEE
 EEEEEGEAGEAGEAESEKGGEE LLPPESTPIPANLSQNLEAAAATQVAVSVPKRRRKIKELNKKEAVGDL
 LDAFKEANPAVEVENQPPAGSNPGESESGVPPRPEEADETWDSKEDKIHNAENIQPGQKYEYKSDQ
 WKPLNLEEKRYDREFL LGFQFIFASMQKPEGLPHISDVVLDKANKTPLRPLDPTRLQGINCPDFTPSF
 ANLGRTTLSTRGPPRGGGELPRGPAGLPPRSQQGPRKEPRKIIATVLMTEDIKLNKAEKAWKPPSSKR
 TAADKDRGEEDAGSKTQDLFRRVRSILNKLTPQMFQQLMKQVTLAIDTEERLKGVIDLIFEKAISEPN
 FSVAYANMCRCLMALKVPTTEKPTVTVNFRLKLLNRCQKEFEKDKDDDEVFEKKQKEMDEAATAEERGL
 KEEL EEARDIARRRSLGNIKF IGELFKL KMLTEAIMHDCVVKLLKNHDEESLECLRLLTTIGKDLDFEK
 AKPRMDQYFNQMEKIIKEKKTSSRIRFMLQDVLDLRGSNWVPRRGDQGPKTIDQIHKEAEMEEHREHIKV
 QQLMAKGS DKRRGGPPGISRGLPLVDDGGWNTVPI SKGSRPIDTSRLTKITKPGSIDSNQLFAPGGR
 LSWGKGS SGGGSAKPSDAASEAARPATSTLNRF SALQQAVPTESDNRVVQRSSL SRERGEKAGDRGDR
 LERSERGGDRGDRDRARTPATKRSFSKEVEERSRERPSQPEGLRKAASLTEDRDRGRDAVKREAAALPPV
 SPLKAALSEEELEKSKAIEEYHLNDMKEAVQCVELASPLLFIFVRHGVSTLERSAIAREHMGQL
 LHQLLCAGHLSTAQYYQGLYEILELAEDMEIDIPHWLYLAELVTPILQEGGVPMGELFREITKPLRPLG
 KAASLLLEILGLLCKSMGPKKVGTLWREAGLSWKEFLPEGQDIGAFVAEQKVEYTLGEESEAPGQRALPS
 EELNRQLEKLLKEGSSNQRFVDWIEANLSEQQIVSNTLVRALMTAVCYSAIIFETPLRVDVAVLKARAKL
 LQKYL CDEQKELQALYALQALVVTLEQPPNLLRMFFDALYDEDVVKEDAFYSWESSKDPAEQGGKGVALK
 SVTAFFKWLREAEESDHN

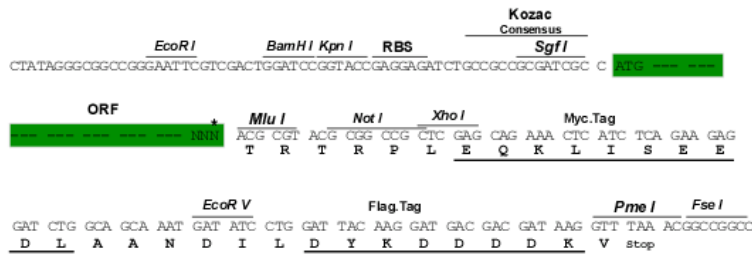
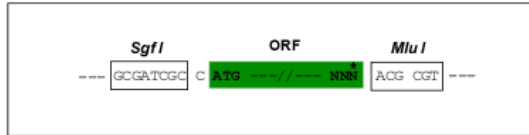
TRTRPLEQKLISEEDLAANDILDYKDDDDKV

Restriction Sites:

Sgfl-MluI

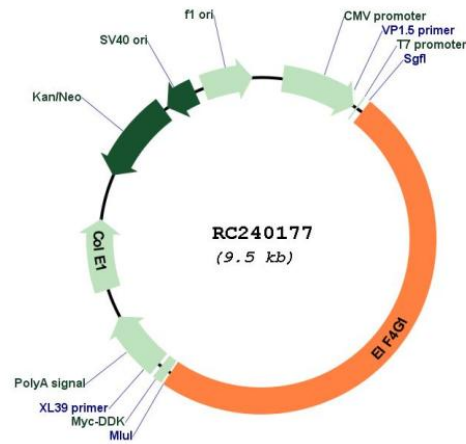
Cloning Scheme:

Cloning sites used for ORF Shuttling:



* The last codon before the Stop codon of the ORF

Plasmid Map:



ACCN: NM_001291157

ORF Size: 4677 bp

OTI Disclaimer: The molecular sequence of this clone aligns with the gene accession number as a point of reference only. However, individual transcript sequences of the same gene can differ through naturally occurring variations (e.g. polymorphisms), each with its own valid existence. This clone is substantially in agreement with the reference, but a complete review of all prevailing variants is recommended prior to use. [More info](#)

OTI Annotation: This clone was engineered to express the complete ORF with an expression tag. Expression varies depending on the nature of the gene.

Components: The ORF clone is ion-exchange column purified and shipped in a 2D barcoded Matrix tube containing 10ug of transfection-ready, dried plasmid DNA (reconstitute with 100 ul of water).

Reconstitution Method:

1. Centrifuge at 5,000xg for 5min.
2. Carefully open the tube and add 100ul of sterile water to dissolve the DNA.
3. Close the tube and incubate for 10 minutes at room temperature.
4. Briefly vortex the tube and then do a quick spin (less than 5000xg) to concentrate the liquid at the bottom.
5. Store the suspended plasmid at -20°C. The DNA is stable for at least one year from date of shipping when stored at -20°C.

RefSeq: [NM_001291157.1](#), [NP_001278086.1](#)

RefSeq Size: 5581 bp

RefSeq ORF: 4680 bp

Locus ID: 1981

Cytogenetics: 3q27.1

Protein Pathways: Viral myocarditis

MW: 171.9 kDa

Gene Summary: The protein encoded by this gene is a component of the multi-subunit protein complex EIF4F. This complex facilitates the recruitment of mRNA to the ribosome, which is a rate-limiting step during the initiation phase of protein synthesis. The recognition of the mRNA cap and the ATP-dependent unwinding of 5'-terminal secondary structure is catalyzed by factors in this complex. The subunit encoded by this gene is a large scaffolding protein that contains binding sites for other members of the EIF4F complex. A domain at its N-terminus can also interact with the poly(A)-binding protein, which may mediate the circularization of mRNA during translation. Alternative splicing results in multiple transcript variants, some of which are derived from alternative promoter usage. [provided by RefSeq, Aug 2010]