

Product datasheet for RC240174

ZFYVE16 (NM_001284236) Human Tagged ORF Clone

Product data:

Product Type:	Expression Plasmids
Product Name:	ZFYVE16 (NM_001284236) Human Tagged ORF Clone
Tag:	Myc-DDK
Symbol:	ZFYVE16
Synonyms:	PPP1R69
Mammalian Cell Selection:	Neomycin
Vector:	pCMV6-Entry (PS100001)
E. coli Selection:	Kanamycin (25 ug/mL)
ORF Nucleotide Sequence:	>RC240174 ORF sequence Red=Cloning site Blue=ORF Green=Tags(s)

TTTTGTAATACGACTCACTATAGGGCGGCCGGAATTCGTCGACTGGATCCGGTACCGAGGAGATCTGCC
GCCCGGATCGCC

ATGGACAGTTATTTAAAGCAGCTGTCAGTGACTTGGACAACTCCTTGATGATTTGAACAGAACCAG
ATGAACAAGATTATCTCCAAGATGTACAAAATGCATATGATTCTAACCCTGCTCAGTTTCTTCAGAGTT
GGCTTCTCACAGCGAATTCATTGCTCCCAAAGACCAAGAGTGCCTTAATAGTTGTGCCTCATCAGAA
ACAAGCTATGGAACAAAATGAGAGTTCCTGAATAAAAAACACTCAAGGGACTTACTTCTATACAAAATG
AAAAAAATGTAACAGGACTTGATCTTCTTCTTCTGTGGATGGTGGTACTTCAGATGAAATCCAGCCGTT
ATATATGGGACGATGTAGTAAACCTATCTGTGATCTGATAAGTGACATGGGTAAGTTCAGTTCATGCAACC
AATAGTGAAGAAGATATTAATAAATTATTGCCAGATGATTTAAAGTCTAATGCAGATTCCTTGATTGGAT
TGGATTTATCTTCAGTGTGAGTACTCCCTGTGTTTCTTCAACAGACCATGATAGTGACTGTGAGAGA
ACAACAGAATGATATCAGTTCTGAATTACAAAATAGAGAAATCGGAGGAATCAAAGAATTGGGTATAAAA
GTAGATACAACACTTTCAGATTCCTATAATTACAGTGGACAGAAAAATTTAAAGATAAAAAAGATCTTTA
ATCAGTTAGAATCAATTGTTGATTTAACATGTCATCTGCTTTGACTCGACAAAAGTTCAAAATGTTTCA
TGCCAAAGACAAGCTACAACACAAGAGCCAGCCATGTGGATTACTAAAAGATGTTGGCTTAGTAAAAGAG
GAAGTAGATGTGGCAGTCATAACTGCCGAGAATGTTTTAAAAGAAGAGGGCAAGCAAGTGTGTTGACCT
GCAGCCTCCGAAAAATGAAGATTTATGCTTAAATGATTCAAATTCAGAGATGAAAATTTCAAATTACC
TGACTTTTCTTTTTCAGGAAGATAAGACTGTTATAAAAACATCTGCACAAGAAGACTCAAAAAGTTTAGAC
CTTAAGGATAATGATGTAATCCAAGATTCCTTTCAGCTTTACATGTTTCCAGTAAAGATGTGCCGTCCT
CATTGCTCTGCTTCTGCGTCTGGGTCTATGTGTGGATCATTAAATTGAAAGTAAAGCACGGGGTGATTT
TTTACCTCAGCATGAACATAAAGATAATATACAAGATGCAGTGACTATACATGAAGAAAATACAGAACAGT
GTTGTTCTAGGTGGGAACCATCAAAGAGAATGATCTTTTGAACAGGAAAAATGTAAGCATACTCC
TTCAGTCATTAATTGAAGGGATGGAAGACAGAAAGATAGATCCTGACCAGACAGTAAATCAGAGCTGAGTC
TTTGGATGGTGGTACACCAGTCTACAGTTGTAGAATCTCAAGAGGGGCTTCTGGCACTCATGTCCCA



[View online »](#)

GAGTCTTCTGATTGTTGTGAAGGTTTTATTAATACTTTTTCAAGCAATGATATGGATGGGCAAGACTTAG
ATTACTTTAATATTGATGAAGGCGCAAAAAGTGGCCCACTAATTAGTGATGCTGAACTTGATGCCTTTCT
GACAGAACAGTATCTTCAGACCACTAACATAAAGTCTTTTGAAGAAAAATGAAATGACTCTAAATCGCAA
ATGAATCAGATAGATATGAAAGGCTTAGATGATGGAAACATCAATAATATATATTTCAATGCAGAAGCAG
GAGCTATTGGGAAAAGTCATGGTATTAATAATTTGTGAAATAGTTGATAAACAATAACAATAGAAAA
TGGCCTTTCTTTAGGAGAAAAAGCACTATTCCAGTTCAACAAGGTTACCTACCAAGTAAAGTCTGAGATT
ACAAATCAATTATCGGTCTCTGATATTAACAGTCAATCTGTTGGAGGGCCAGACCTAAGCAATTTGTTA
GCCTTCCATCAAGAACAAGGAGTTCAAAGGACCTGAATAAGCCAGATGTTCCAGATACAATAGAAAAGTGA
ACCCAGCACAGCAGATACCGTTGTTCCAATCACTTGTGCTATAGATTCTACAGCTGATCCACAGGTTAGC
TTCAACTCTAATTACATTGATATAGAAAAGTAACTCTGAAGGTGGATCTAGTTTCGTAAGTCAAAATGAAG
ATTCTGTACCTGAAAACACTTGCAAAGAAGGCTTGGTTTTGGCCAGAAACAGCCTACTTGGGTTCTGTA
TTCAGAAGCTCCAACTGTATGAACTGCCAAGTCAAATTTACTTTTACCAAACGGCGACACCATTGCCGA
GCATGTGGGAAAGTATTTGTGGTGTCTGTTGTAATAGGAAGTAAACTGCAATATCTAGAAAAGGAAG
CAAGAGTATGTAGTCTGCTATGAACTATTAGTAAAGCTCAGGCATTTGAAAGGATGATGAGTCCAAC
TGTTTCTAATCTTAAGTCTAATCATTCTGATGAATGTAAGTACTGCTCCAGCCTCCTCAGGAGAACCAACA
TCCAGTATACCTTACCAGCAACTTTGCCAGTCTCAGCACTTAAACAACCAAGGTTTGAAGGACTATGTT
CCAAAGAACAGAAGAGAGATAGGTTTGCAGATGGTATATTGCCCAATGGTGAAGTTGCAGATACAACAAA
ATTATCATCTGGAAGTAAAAGATGTTTCTGAAGACTTTAGTCTCTCACCTGATGTGCCTATGACAGTA
AACACAGTGGATCATTCCCACTTACTACAGTGGAAAAGCCAAACAATGAGACAGGAGATATTACAAGAA
ATGAGATAATTCAGAGTCTATTTCTCAGGTTCCATCAGTGGAAAAATTTGCTATGAACACAGGAAATGA
GGGTTACCTACTTCTGGTTCATTTACACTAGATGATGATTTTTGCAGAACTGAAGAACCATCTAGT
CCTACTGGTGTCTTAGTTAACAGCAATTTACCTATTGCTAGTATTTGAGATTATAGTTACTGTGTGATA
TTAACAAGTATGTCTGCAATAAGATTAGTCTTCTACCTAATGATGAGGACAGTTTGCCTCCACTTTGGT
TGCATCTGGAGAAAAGGATCAGTGCCTGTAGTAGAAGAACATCCATCTCATGAGCAGATCATTGCTT
CTTGAAGGTGAAAGCTTTCATCCTGTTACATTTGCTCCTAAATGCTAATCTACTCGTGAATGTCAAATTC
TATTTTATTCTCAGACAAATATTGGTACTTTTCAACCAATGGATTGCATGGCTTGGGACAGGCAGAAAT
TATTATTCTATTGTTATGTTTGGCAAAATGAAGATACTATTCTAAGGACATCTTCAGACTATTTATCACC
ATATATAAGGATGCTCTAAAAGGAAAATACATAGAAAACCTGGACAATATTACCTTTACTGAGAGTTTTT
TCAGTAGCAAGGATCACGGAGGATTCCTGTTTATTACACCTACTTTTTCAGAACTTGATGATCTCTCATT
ACCAAGTAACTCTTTTCTTTGTGGAATTCCTATCCAGAAGCTTGAGATCCCTGGGCAAAGGTTTTCT
ATGCGTTTAAATGTTGAGATTGGGTGCAGAAATATAAAGCATATCCTGCTCCTAACAAGCATCAGAGGCC
GAAAACCTCTTTTGGAGAAATAGGACACACTATTATGAACTACTTGTGACCTTCGAAATTACCAGTA
TACCTTGCAATATAGATCAACTGTTGATTCATATGAAATGGGAAAAAGCTGCATAAAAAATACCACGG
AAAAAGTACAGTATGTAATGAAAGTAAATTTCTTCCAATGAGCATGTCATTAGCATTGGAGCAAGTT
TCAGTACAGAAGCAGATTCTCATCTAGTCTGTATACAGAATGATGGAAATTTATGAAACACAGGCCAACAG
TGCCACTGGCCATCCTAGAAAAGTACAGGTGCAAGTTTTGTGGTATTCAATGGAGCTCTAAAAACATCT
TCAGGATTTCTTGCTAAGTCCAGCATAGTTGAAGATGGCTTAATGGTACAATAACTCCAGAGACCATGA
CCTGAGAGAATACGTGGATATCTGCTGGGTAGATGCTGAAGAAAAAGGAAACAAGGATTTATCAGTTCA
GTGGATGGAATATCATTACAAGGATTTCCAAGTAAAAAATAAACTGGAAGCAGATTTTGAACCGATG
AGAAGATTGTAATAATGTACCGAGGTGTTCTACTTTCTAAAGGACCAGGATTTATCTATTTTATCAACTTC
TTATCAGTTTGCAAAAGAAATAGCCATGGCTTGTAGTGTGCGCTGTGCCCTCACCTGAAAACCTCTAAAA
AGTAATGGGATGAATAAAATGGACTCAGAGTTTCCATTGACACTGATATGGTTGAATTTTCAGGCAGGAT
CTGAAGGCCAACTTCTGCCTCAGCATTATCTAAATGATCTTGATAGTGTCTGATACCTGTGATCCATGG
TGGACCTCCAACCTAGTTTACCATTAGAAATAGAATTAGTGTTTTTTCTATAGAACATCTTTTT

ACGCGTACGCGGCCGCTCGAGCAGAACTCATCTCAGAAGAGGATCTGGCAGCAATGATATCCTGGATT
ACAAGGATGACGACGATAAGGTTTAA

Protein Sequence: >RC240174 protein sequence
 Red=Cloning site Green=Tags(s)

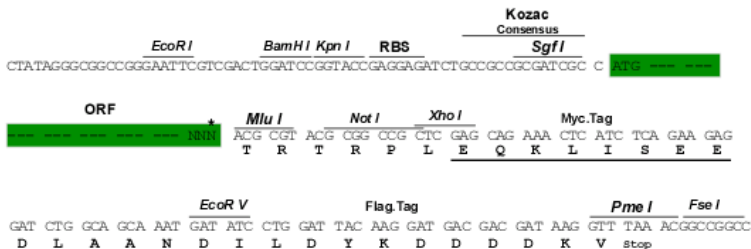
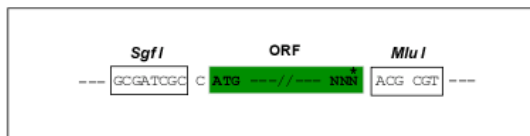
MDSYFKA AVSDLDKLLDDFEQNPDEQDYLDQVQNA YDSNHCSVSSSELASSQRTSLLPKDQECVNSCASSE
 TSYGTNESSLNEKTLKGLTSIQNEKNVTGLDLLSSVDGGTSDEIQPLYMGRC SKPICDLISDMGNLVHAT
 NSEEDIKKLLPDDFKSNADSLIGLDLSSVSDTPCVSSTDHDSDTVREQQNDISSELQNR EIGGIKELGIK
 VDTTLLSDSYNYSGTENLKDKKIFNQLESIVDFNMSSALTRQSSKMFHAKDKLQHKSQPCGLLKDVGLVKE
 EVDVAVITAAECLKEEGKTSALTCSLPKNE DCLNDSNSRDENFKLPDFSFQEDKTVIKQSAQEDSKSLD
 LKDNDVIQDSSSALHVSSKDVPSLSLCPASGSMCGSLIESKARGDFLPQHEHKDNIQDAVTIHEEIQNS
 VVLGGPEPFKENDLLKQEKCSILLQSLIEGMEDRKIDPDQTVIRAESLDGGDTSSTVVESQEGLSGTHVP
 ESSDCCEGFINTFSSNDMDGQDLDFNIDEGAKSGPLISDAELDAFLTEQYLQTTNIKSFEENVNDSKSQ
 MNQIDMKGLDDGNINNIYFNAEAGAIGESHGINIICEIVDKQNTIENGLSLGEKSTIPVQQGLPTSKSEI
 TNQLSVSDINSQSVGGARPKQLFSLPSRTRSSKDLNKPDPDTIESEPSTADTVVPITCAIDSTADPQVS
 FNSNYIDIESNSEGGSSFVTANEDSVPENTCKEGLVLGQKQPTWVPDSEAPNCMNCQVKFTFKRRHHCR
 ACGKVFVCGVCCNRKCKLQYLEKEARVCVVCYETISKAQAFERMMSPTGSNLKSNHSDECTTVQPQENQT
 SSIPSPATLPVSALKQPGVEGLCSKEQKRVWFADGILPNGEVADTTKLSGSKRCSEDF SPLSPDVPMTV
 NTVDHSHSTTVEKPNNETGDITRNEIIQSPISQVPSVEKLSMNTGNEGLPTSGSFTLDDDVFAETEPESS
 PTGVLVNSNLPIASISDYRLLCDINKYVCNKISLLPNDEDSLPLLVASGEKGSVPVVEEHP SHEQIILL
 LEGESFHPVTFVLNANLLVNVKFI FYSSDKYWYFSTNGLHGLGQAEIIILLCLPNEDTIPKIDIFRLFIT
 IYKDALKGKYIENLDNITFTESFLSSKDHGGFLFITPTFQKLDDLSPSNPFLCGILIQKLEIPWAKVFP
 MRLMLRLGAEYKAYPAPLTSIRGRKPLFGEIGHTIMNLLVDLRNYQYTLHNIDQLLIHMEMGKSCIKIPR
 KKYSVMKVLNSSNEHVISIGASFSTEADSHLVCIQNDGIYETQANSATGHPRKVTGASFVVFNGALKTS
 SGFLAKSSIVEDGLMVQITPETMNGRLRALREQKDFKITCGKVDVAVDLREYVDICWVDAEEKGNKGVISS
 VDGISLQGFPESEKIKLEADFEQDEKIVKCTEVFYFLKDQDLSILSTSYQFAKEIAMACSAALCPHLKTLK
 SNGMNIKGLRVSIDTDMVEFQAGSEGQLLPQHLYLNDLSALIPVIHGGTSNSSLPLEIELVFFIIIEHFL

TRTRPLEQKLISEEDLAANDILDYKDDDDKV

Restriction Sites: SgfI-MluI

Cloning Scheme:

Cloning sites used for ORF Shuttling:



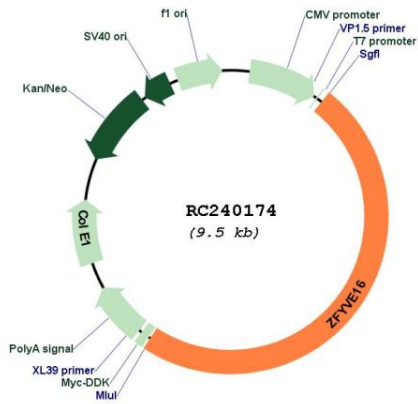
* The last codon before the Stop codon of the ORF

ACCN: NM_001284236

ORF Size: 4617 bp

OTI Disclaimer:	The molecular sequence of this clone aligns with the gene accession number as a point of reference only. However, individual transcript sequences of the same gene can differ through naturally occurring variations (e.g. polymorphisms), each with its own valid existence. This clone is substantially in agreement with the reference, but a complete review of all prevailing variants is recommended prior to use. More info
OTI Annotation:	This clone was engineered to express the complete ORF with an expression tag. Expression varies depending on the nature of the gene.
Components:	The ORF clone is ion-exchange column purified and shipped in a 2D barcoded Matrix tube containing 10ug of transfection-ready, dried plasmid DNA (reconstitute with 100 ul of water).
Reconstitution Method:	<ol style="list-style-type: none">1. Centrifuge at 5,000xg for 5min.2. Carefully open the tube and add 100ul of sterile water to dissolve the DNA.3. Close the tube and incubate for 10 minutes at room temperature.4. Briefly vortex the tube and then do a quick spin (less than 5000xg) to concentrate the liquid at the bottom.5. Store the suspended plasmid at -20°C. The DNA is stable for at least one year from date of shipping when stored at -20°C.
RefSeq:	NM_001284236.3
RefSeq Size:	10805 bp
RefSeq ORF:	4620 bp
Locus ID:	9765
Cytogenetics:	5q14.1
Protein Pathways:	TGF-beta signaling pathway
MW:	168.9 kDa
Gene Summary:	This gene encodes an endosomal protein that belongs to the FYVE zinc finger family of proteins. The encoded protein is thought to regulate membrane trafficking in the endosome. This protein functions as a scaffold protein in the transforming growth factor-beta signaling pathway and is involved in positive and negative feedback regulation of the bone morphogenetic protein signaling pathway. Alternate splicing results in multiple transcript variants. [provided by RefSeq, Sep 2013]

Product images:



Circular map for RC240174