

Product datasheet for **RC240158**

CD163L1 (NM_001297650) Human Tagged ORF Clone

Product data:

Product Type: Expression Plasmids
Product Name: CD163L1 (NM_001297650) Human Tagged ORF Clone
Tag: Myc-DDK
Symbol: CD163L1
Synonyms: CD163B; M160; SCARI2; WC1
Vector: pCMV6-Entry (PS100001)
E. coli Selection: Kanamycin (25 ug/mL)
Cell Selection: Neomycin
ORF Nucleotide Sequence: >RC240158 representing NM_001297650
Red=Cloning site Blue=ORF Green=Tags(s)

TTTTGTAATACGACTCACTATAGGGCGCCGGAATTCGTCGACTGGATCCGGTACCGAGGAGATCTGCC
GCC**GCGATCGCC**

ATGATGCTGCCTCAAACCTCGTGGCATATTGATTTTGAAGATGCTGCTGCATCAGAACCTTTTCTCTG
CTGTGGTAACTTGCATCCTGCTCCTGAATTCCTGCTTTCTCATCAGCAGTTTTAATGGAACAGATTTGGA
GTTGAGGCTGGTCAATGGAGACGGTCCCTGCTCTGGGACAGTGGAGGTGAAATTCAGGGACAGTGGGGG
ACTGTGTGTGATGATGGGTGGAACACTACTGCCTCAACTGTCGTGTGCAAACAGCTTGGATGTCCATTTT
CTTTCCGCATGTTTCGTTTTGGACAAGCCGTGACTAGACATGGAAAAATTTGGCTTGATGATGTTTCCTG
TTATGGAATGAGTCAGCTCTCTGGGAATGTCAACACCGGGAATGGGGAAGCCATAACTGTTATCATGGA
GAAGATGTTGGTGTGAAGTGTGTAAGAGTCTAAGTGAAGTGAAGGCAAGGTGAAGCCAATCTGG
GTTTGAGGCTAGTGGATGGAAACAACCTCTGTTTCAAGGAGAGTGGAGGTGAAATTCAGAAAGGTGGGG
AACTATATGTGATGATGGGTGGAACCTGAATACTGCTGCCGTGGTGTGCAGGCAACTAGGATGTCCATCT
TCTTTTATTTCTCTGGAGTTGTTAATAGCCCTGCTGTATTGCGCCCCATTTGGCTGGATGACATTTTAT
GCCAGGGGAATGAGTTGGCACTCTGGAATTGCAGACATCGTGGATGGGGAATCATGACTGCAGTCACAA
TGAGGATGTACATTAACCTTGTATGATAGTAGTGATCTTGAACCTAAGGCTTGTAGTGGAACTAACCGC
TGTATGGGAGAGTAGAGCTGAAAAATCCAAGGAAGGTGGGGGACCGTATGCCACCATAAGTGAACAATG
CTGCAGCTGATGTCGATGCAAGCAGTTGGGATGTGGAACCGCACTTCACTTCGCTGGCTTGCCTCATT
GCAGTCAGGGTCTGATGTTGATGGCTTGTGCTCCTGCTCCGGTAAATGAATCTTTTCTTTGGGAC
TGCAGACATTCGGAAACCGTCAATTTTACTGTCTTCAAAAACGATGTGTCTGTGATCTGCTCAGATG
GAGCAGATTTGGAACCTGCGACTAGCAGATGGAAGTAACAATTGTTCAAGGAGAGTAGAGGTGAGAATTCA
TGAACAGTGGTGGACAATATGTGACCAGAACTGGAAGAATGAACAAGCCCTTGTGGTTTGAAGCAGCTA
GGATGTCCGTTACAGCTTTTGGCAGTCGTCGTGCTAAACCTAGTAATGAAGCTAGAGACATTTGGATAA
ACAGCATATCTTCACTGGGAATGAGTCAGCTCTCTGGGACTGCACATATGATGGAAAAGCAAAGCGAAC
ATGCTTCCGAAGATCAGATGCTGGAGTAATTTGTTCTGATAAAGGAGATCTGGACCTAAGGCTTGTCCGG
GCTCATAGCCCCTGTTATGGGAGATTGGAGGTGAAATACCAAGGAGAGTGGGGGACTGTGTGCATGACA



GATGGAGCACAAGGAATGCAGCTGTTGTGTGTAACAATTGGGATGTGGAAAGCCTATGCATGTGTTGG
TATGACCTATTTAAAGAAGCATCAGGACCTATTTGGCTGGATGACGTTTCTTGCATTGGAAATGAGTCA
AATATCTGGGACTGTGAACACAGTGGATGGGAAAGCATAAATTGTGTACACAGAGAGGATGTGATTGTAA
CCTGCTCAGGTGATGCAACATGGGGCCTGAGGCTGGTGGCGGCAGCAACCGCTGCTCGGGAAGACTGGA
GGTGTACTTTCAAGGACGGTGGGCACAGTGTGTGATGACGGCTGGAACAGTAAAGCTGCAGCTGTGGT
TGTAGCCAGCTGGACTGCCATCTTCTATCATTGGCATGGTCTGGGAAACGCTTCTACAGGATATGGAA
AAATTTGGCTCGATGATGTTTCCCTGTGATGGAGATGAGTCAGATCTCTGGTCATGCAGGAACAGTGGGT
GGGAAATAAATGACTGCAGTCACAGTGAAGATGTTGGAGTGTCTGTTCTGATGCATCGGATATGGAGCTG
AGGCTTGTGGGTGGAAGCAGCAGGTGTGCTGGAAGTTGAGGTGAATGTCCAGGGTGCCGTGGGAATTC
TGTGTGCTAATGGCTGGGAATGAACATTGCTGAAGTTGTTGCAGGCAACTTGAATGTGGTCTGCAAT
CAGGGTCTCCAGAGAGCCTCATTTCACAGAAAGAATTACACATCTTAATGTGCAATTCTGGCTGCACT
GGAGGGGAAGCCTCTCTCTGGGATTGTATACGATGGGAGTGGAAACAGACTGCGTGTCAATTAATATGG
AAGCAAGTTTGTCTGCTCAGCCACAGGCAGCCAGGCTGGTTGGAGCTGATATGCCCTGCTCTGGACG
TGTTGAAGTGAACATGCAGACACATGGCGCTCTGTCTGTGATTCTGATTTCTCTTTCATGCTGCCAAT
GTGCTGTGCAGAGAATTAACACTGTGGAGATGCCATATCTCTTTCTGTGGGAGATCACTTTGAAAAGGGA
ATGGTCTAACTTGGGCCGAAAAGTTCAGTGTGAAGGGAGTGAAACTCACCTTGCAATATGCCCCATTGT
TCAACATCCGGAAGACACTTGTATCCACAGCAGAGAAGTTGGAGTTGTCTGTTCCCGATATACAGATGTC
CGACTTGTGAATGGCAAATCCCAGTGTGACGGCAAGTGGAGATCAACGTGCTTGGACACTGGGGCTCAC
TGTGTGACACCCACTGGGACCCAGAAGATGCCCGTGTTCATGCAGACAGCTCAGCTGTGGGACTGCTCT
CTCAACCACAGGAGGAAAATATATTGGAGAAAGAAGTGTTCGTGTGTGGGACACAGGTTTCATTGCTTA
GGGAATGAGTCACTTCTGGATAACTGTCAAATGACAGTCTTGGAGCACCTCCCTGTATCCATGGAATA
CTGTCTCTGTGATCTGCACAGGAAGCCTGACCCAGCCACTGTTCCATGCCTCGAAATGTATCTGACCC
ATATTTGTCTGCAGTTCAGAGGGCAGTCTTTGATCTGCTTAGAGGACAAACGGCTCCGCTAGTGGAT
GGGGACAGCCGCTGTGCCGGGAGAGTAGAGATCTATCACGACGGCTTCTGGGGCACCATCTGTGATGACG
GCTGGGACCTGAGCGATGCCACAGTGGTGTGTCAAAAGCTGGGCTGTGGAGTGGCCTTCAATGCCACGGT
CTCTGCTCACTTTGGGAGGGGTGAGGGCCATCTGGCTGGATGACCTGAACTGCACAGGAATGGAGTCC
CACTTGTGGCAGTGCCCTTCCCGCGGCTGGGGCAGCAGACTGCAGGCACAAGGAGGACGAGGGGTCA
TCTGCTCAGAATTCACAGCCTTGAGGCTCTACAGTGAACACTGAAACAGAGAGCTGTGCTGGGAGATTGGA
AGTCTTCTATAACGGGACCTGGGGCAGCGTCGGCAGGAGGAACATCACCACAGCCATAGCAGGCATTGTG
TGCAGGCAGCTGGGCTGTGGGAGAATGGAGTTGTGAGCCTCGCCCTTTATCTAAGACAGGCTCTGGTT
TCATGTGGGTGGATGACATTCAGTGTCTAAAACGCATATCTCCATATGGCAGTGCCTGTCTGCCCATG
GGAGCGAAGAATCTCCAGCCAGCAGAAGAGACCTGGATCACATGTGAAGATAGAATAAGAGTGCCTGGA
GGAGACACCGAGTGTCTGGGAGAGTGGAGATCTGGCACGAGGCTCCTGGGGCAGAGTGTGTGATGACT
CCTGGGACCTGGCCGAGGCGGAAGTGGTGTGTCAGCAGCTGGGCTGTGGCTCTGCTCTGGCTGCCCTGAG
GGACGCTTCGTTTGGCCAGGGAATGGAACCATCTGGTTGGATGACATGCGGTGCAAAGGAAATGAGTCA
TTTCTATGGGACTGTACGCCAAACCCTGGGGACAGAGTACTGTGGACACAAGGAAGATGCTGGCGTGA
GGTGTCTGGACAGTCTGAAATCACTGAATGCCTCCTCAGGTCATTTAGCACTATTTTATCCAGTAT
CTTTGGGCTCCTTCTCCTGGTTCTGTTTATTCTATTTCTACGTGGTCCGAGTTCCAGAAACAAAACAT
CTGCCCCCAGAGTTTCAACCAGAAGGAGGGTTCTCTCGAGGAGAATTTATCCATGAGATGGAGACCT
GCCTCAAGAGAGAGGACCCACATGGGACAAGAACCCTCAGATGACACCCCCAACCATGGTTGTGAAGATGC
TAGCGACACATCGCTGTTGGGAGTTCTTCTGCCTCTGAAGCCACAAAA

ACGCGTACGCGGCCGCTCGAGCAGAACTCATCTCAGAAGAGGATCTGGCAGCAATGATATCCTGGATT
ACAAGGATGACGACGATAAGGTTTAA

Protein Sequence: >RC240158 representing NM_001297650
 Red=Cloning site Green=Tags(s)

```

MMLPQNSWHIDFGRCCCHQNLFSAVVTCILLNNSCFLISSFNGTDLELRLVNGDGPCSGTVEVKFQGQWG
TV added GWNTTASTVVCKQLGCPFSFAMFRFGQAVTRHGKIWLDDVSCYGNESALWECQHREWGSHNCYHG
EDVGVNVCYGKSLTRVGRQGEANLGLRLVDGNNSCSGRVEVKFQERWGTICDDGWNLNTAAVVCRLGCP
SFISSGVVNSPAVLRPIWLDLILCQGNELALWNCRHRGWGNHDCSHNEDVTLTCYDSSDLELRLVGGTNR
CMGRVELKIQGRWGTVCHHKWNNAADVCKQLGCGTALHFAGLPHLQSGSDVVWLDGVSCSGNESFLWD
CRHSGTVNFDCLHQNDVSVICSDGADLELRLADGSNNCSGRVEVRIHEQWWTICDQNWKNEQALVYCKQL
GCPFSVFGSRRAKPSNEARDIWINISICTGNESALWDCTYDGKAKRTCFRRSDAGVICSDKADLDLRLVG
AHSPCYGRLEVYQGEWGTVCHDRWSTRNAAVVCKQLGCGKPMHVFGMTYFKEASGPIWLDVSCIGNES
NIWDCHESGWGKHNCVHREDVIVTCSGDATWGLRLVGGSNRCSGRLEVYFQGRWGTICDDGWNSKAAAVV
CSQLDCPSSIIGMGLGNASTGYKMWLDVSCDGEDSLWSCRNSGWGNDCSHSEVGVICSDASDMEL
RLVGGSSRCAGKVEVNVQAVGILCANGWGMNIAEVVCRQLECGSAIRVSREPHFTERTLHILMSNGCT
GGEASLWDCIRWEWKQTACHLNMEASLICSARHPRLVGADMPCSGRVEVKHADTWRSVCDSDFLHAAN
VLCRELNCGDAISLSVGDHFGKGNGLTWAEFQCEGSETHLALCPVQHPEDTCIHSREVGVCVSRVTDV
RLVNGKSQCDGQVEINVLGHWGSLCDTHWDPEDARVLCRQLSCGTALSTTGKYGIGERSVVRWGHFRHCL
GNESLLDNCQMTVLGAPPCIHGNTVSVICTGSLTQPLFPCLANVSDPYLSAVPEGSALICLEDKRLRLVD
GDSRCAGRVEIYHDFWGTICDDGWDLSDAHVVCQKLGCGVAFNATVSAHFGEVSGPIWLDLNCCTGMES
HLWQCP SRGWGQHDCRHKEDAGVICSEFTALRLYSETETESCAGRLEVYNGTWGVSVGRNITTAIAGIV
CRQLGCGENGVVSLAPLTKTGSGFMVDDIQCPKTHISIWQCL SAPWERRISSPAEETWITCEDRIRVRG
GDTECSGRVEIWHAGSWGTVCDSDWDLAEAEVVCQQLGCGSALALRDASFQGTGTIWLDDMRCKGNES
FLWDC HAKPWGQSDCGHKEDAGVRCGGSLKSLNASSGHLALILSSIIFGLLLLVLFLFLTWRVQKQKH
LPLRVSTRRRRGSLEENLFHEMETCLKREDPHGTRTSDDTPNHGCEADSDTSLGLVLPASEATK
  
```

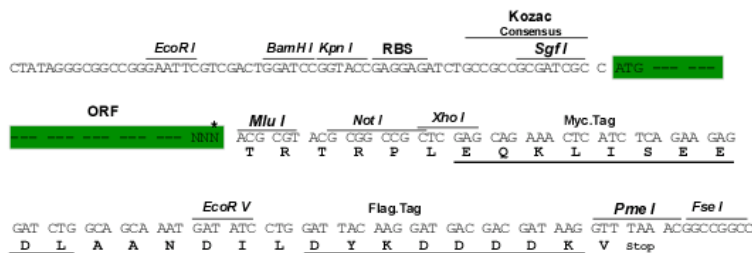
TRTRPLEQKLISEEDLAANDILDYKDDDDKV

Restriction Sites:

Sgfl-MluI

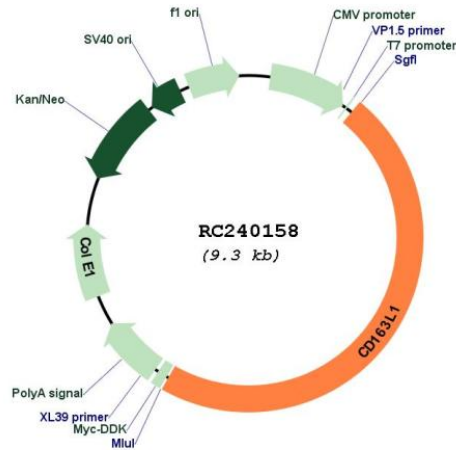
Cloning Scheme:

Cloning sites used for ORF Shuttling:



* The last codon before the Stop codon of the ORF

Plasmid Map:



ACCN: NM_001297650

ORF Size: 4389 bp

OTI Disclaimer: The molecular sequence of this clone aligns with the gene accession number as a point of reference only. However, individual transcript sequences of the same gene can differ through naturally occurring variations (e.g. polymorphisms), each with its own valid existence. This clone is substantially in agreement with the reference, but a complete review of all prevailing variants is recommended prior to use. [More info](#)

OTI Annotation: This clone was engineered to express the complete ORF with an expression tag. Expression varies depending on the nature of the gene.

Components: The ORF clone is ion-exchange column purified and shipped in a 2D barcoded Matrix tube containing 10ug of transfection-ready, dried plasmid DNA (reconstitute with 100 ul of water).

Reconstitution Method:

1. Centrifuge at 5,000xg for 5min.
2. Carefully open the tube and add 100ul of sterile water to dissolve the DNA.
3. Close the tube and incubate for 10 minutes at room temperature.
4. Briefly vortex the tube and then do a quick spin (less than 5000xg) to concentrate the liquid at the bottom.
5. Store the suspended plasmid at -20°C. The DNA is stable for at least one year from date of shipping when stored at -20°C.

RefSeq: [NM_001297650.1](#), [NP_001284579.1](#)

RefSeq Size: 4660 bp

RefSeq ORF: 4392 bp

Locus ID: 283316

UniProt ID: [Q9NR16](#)

Cytogenetics: 12p13.31

Protein Families: Druggable Genome, Transmembrane

MW: 160.8 kDa

Gene Summary: This gene encodes a member of the scavenger receptor cysteine-rich (SRCR) superfamily. Members of this family are secreted or membrane-anchored proteins mainly found in cells associated with the immune system. The SRCR family is defined by a 100-110 amino acid SRCR domain, which may mediate protein-protein interaction and ligand binding. The encoded protein contains twelve SRCR domains, a transmembrane region and a cytoplasmic domain. Alternative splicing results in multiple transcript variants encoding different isoforms. [provided by RefSeq, Jul 2014]