

Product datasheet for RC240156

PTP kappa (PTPRK) (NM_001291981) Human Tagged ORF Clone

Product data:

Product Type:	Expression Plasmids
Product Name:	PTP kappa (PTPRK) (NM_001291981) Human Tagged ORF Clone
Tag:	Myc-DDK
Symbol:	PTPRK
Synonyms:	R-PTP-kappa
Vector:	pCMV6-Entry (PS100001)
E. coli Selection:	Kanamycin (25 ug/mL)
Cell Selection:	Neomycin
ORF Nucleotide Sequence:	>RC240156 representing NM_001291981 Red=Cloning site Blue=ORF Green=Tags(s)

TTTTGTAATACGACTCACTATAGGGCGGCCGGGAATTCGTCGACTGGATCCGGTACCGAGGAGATCTGCC
GCC**GCGATCGC**C

ATGGATACGACTGCGGCGGGCGCTGCCTGCTTTTGTGGCGCTCTTGCTCCTCTCCTTGGCCTCTCC
TGGGATCGGCCAAGGCCAGTTCTCCGAGGTGGCTGTACTTTTGATGATGGTCCAGGGGCTGTGATTA
CCACCAGGATCTGTATGATGACTTTGAATGGGTGCATGTTAGTGTCAAGAGCCTCATTATCTACCACCC
GAGATGCCCAAGGTTCTATATGATAGTGGACTCTTCAGATCAGACCCTGGAGAAAAAGCCAGACTTC
AGCTGCCTACAATGAAGGAGAACGACACTCACTGCATTGATTTAGTTACCTATTATATAGCCAGAAAGG
ACTGAATCCTGGCACTTTGAACATATTAGTTAGGGTGAATAAAGGACCTCTTGCCAATCCAATTTGGAAT
GTGACTGGATTCACGGGTAGAGATTGGCTTCGGGCTGAGCTAGCAGTGAGCACCTTTTGGCCAATGAAT
ATCAGGTAATATTTGAAGCTGAAGTCTCAGGAGGGAGAAGTGGTTATATTGCCATTGATGACATCCAAGT
ACTGAGTTATCCTTGTGATAAATCTCCTCATTTCCTCCGTCTAGGGGATGTAGAGGTGAATGCAGGGCAA
AACGCTACATTTCAAGTGCATTGCCACAGGGAGAGATGCTGTGCATAACAAGTTATGGCTCCAGAGACGAA
ATGGAGAAGATATACCAGTAGCCAGACTAAGAACATCAATCATAGAAGGTTTGGCCGCTTCCTTCAGATT
GCAAGAAGTGACAAAACTGACCAGGATTTGTATCGCTGTGAACTCAGTCAGAACGAGGTTCCGGTGTG
TCCAATTTTGTCAACTTATTGTGAGAGAACCGCCAAGACCCATTGCTCCTCCTCAGCTTCTTGTTGTTG
GGCCTACATATTTGCTGATCCAATAAATGCCAACTCGATCATTGGCGATGGTCTATCATCCTGAAAGA
AGTAGAGTACCGAATGACATCAGGATCCTGGACAGAAACCCATGCAGTCAATGCTCCAATTACAAATTA
TGGCATTAGATCCAGATACCGAATATGAGATCCGAGTTCTACTTACAAGACCTGGTGAAGGTGGAACGG
GGCTCCCAGGACCTCCACTAATCACCAGAACAAAATGTGCAGAACCTATGAGAACCCAAAGACATTA
GATTGCTGAAATACAGGCAAGACGGATTGCTGTGGACTGGGAATCCTTGGTTACAACATTACCGGTTGC
CACACTTTTAATGCTCACTATCTGCTACCATTACTCCGTGGTCAACAGAGCAAGGCAGACTGTTTGG
ACATGGACCCAAAGCCCTCAGCATGTTGTGAACCATCTGCCACCTTATACAAATGTCAGCCTCAAGAT
GATCCTAACCAATCCAGAGGGAAGGAAGGAGAGTGAAGAGACAATTATCAAACCTGATGAAGATGTGCT
GGTCCCGTACCAGTAAAATCTCTTCAAGGAACATCCTTTGAAAATAAGATCTTCTTGAAGTGGAAAGAAC



[View online »](#)

CTTTGGATCCAAATGGAATCATCACTCAATATGAGATCAGCTATAGCAGTATAAGATCATTGGATCCTGC
AGTTCCAGTGGCTGGACCTCCCCAGACTGTATCAAATTTATGGAACAGTACACACCATGTCTTTATGCAT
CTCCACCCTGGAACCAGTACCAGTTTTTCATAAGAGCCAGCACGGTCAAAGGCTTTGGTCCAGCCACAG
CCATCAATGTCACCACCAATATCTCAGCTCCAACCTTTACCTGACTATGAAGGAGTTGATGCCTCTCTCAA
TGAAACTGCCACCACAATAACTGTATTGTTGAGACCAGCACAAGCCAAAGGTGCTCCTATCAGTGCTTAT
CAGATTGTTGTGGAAGAACTGCACCCACACCCGAACCAAGAGAGAAGCCGGAGCCATGGAATGTACCAGG
TTCTGTGCACATACCAAAATGCCATGAGTGGGGTGCACCGTATTACTTTGCTGCAGAACTCCCCCGGG
AAACCTACCTGAGCCTGCCCGTTCACCTGTGGGTGACAATCGGACCTACCAAGGCTTTTGGAAACCTCCT
TTGGCTCCGCGCAAAGGATACAACATCTATTTCCAGGCGATGAGCAGTGTGGAGAAGGAAACTAAAAACC
AGTGCCTACGCATTGCTACAAAAGCAGCAGCAACAGAAGAACCAGAAGTATCCAGATCCCGCCAAGCA
GACAGACAGAGTGGTAAAAATAGCAGGAATTAGTGTGGAATTTTGGTGTTCATCCTCCTCTCTAGTT
GTCATATTAATTGTAAGAAAGAGCAAACCTTGTAAAAACGCAAAGATGCCATGGGGAATACCCGGCAGG
AGATGACTCACATGGTGAATGCAATGGATCGAAGTTATGCTGATCAGAGCACTCTGCATGCAGAAGATCC
TCTTCCATCACCTTCATGGACCAACATAACTTTAGTCCAAGATTGCCAATGATCCACTGTACCGACT
GCTGTGTTAGTTCCTATAACAGATGAGAACCACAGTGTACAGCAGAGTCCAGTGCCTTCTAGACGTAC
CTCGCTACCTCTGTGAGGGGACGGAATCCCTTACCAGACAGGACAGCTGCATCCAGCCATCAGGGTAGC
TGATTTACTGCAGCACATTAATCTCATGAAGACATCAGACAGCTATGGGTTCAAAGAGGAATATGAGAGC
TTTTTTGAAGGACAGTACGATCTTGGGATGTAGCTAAAAAGATCAAAATAGAGCAAAAAACCGATATG
GAAACATTATAGCATATGATCACTCCAGAGTGATTTTGAACCCGTAGAGGATGATCCTTCTCAGATTA
TATTAATGCCAATATATTGATATTTGGCTGTACAGGGATGGCTACCAGAGACCAAGTACATTACATTGCA
ACCAAGGTCCCGTTCATGAAACAGTGTATGATTTCTGGAGGATGATTTGGCAAGAACAATCTGCTTGA
TTGTGATGGTTACAAATTTAGTTGAGGTTGGCCGGTTAAATGCTATAAAATTTGGCCTGATGATACTGA
AGTTTTATGGTGACTTCAAAGTAACGTGTGTGAAATGGAACCACTTGTGAATATGTAGTTAGGACATTC
ACCCTGGAAAGGAGGGGTACAATGAAATCCGTGAAAGTTAAACAGTTCCATTTACGCGGCTGGCCTGACC
ATGGAGTGCCCTACCATGCTACAGGGCTGCTTTCTTTATCCGGCGAGTCAAGTTATCAAACCTCCAG
TGCTGGCCCATCGTTGTACATTGCAGTGTGCTGGACGAACTGGCTGCTACATTGTGATTGACATC
ATGCTAGACATGGCTGAAAGAGAGGGTGTGTTGATATTTACAATTGTGTCAAAGCCTTAAGATCTCGGC
GTATTAATATGGTCCAGACAGAGGAACAGTACATTTTTATTATGATGCCATTTTAGAAGCCTGCTTATG
TGGAGAACTGCCATACCTGTCTGTGAATTTAAAGCTGCATATTTTATGATGATTAGAATAGACTCCAG
ACTAATCTTCCATCTCAAGGATGAATTTAGACTCTGAATTCAGTCAACCCCTCGACTACAAGCTGAAG
ACTGCAGTATAGCGTGCCTGCCAAGGAACCATGACAAGAACCCTTTCATGGACATGCTGCCACCTGACAG
ATGTCTGCCTTTTTTAATTACAATTGATGGGGAGAGCAGTAACTACATCAATGCTGCTCTTATGGACAGC
TACAGGCAACCAGCTGCTTTCATCGTACACAATACCCTCTGCCAAACACTGTAAGAGACTTCTGGAGAT
TAGTGTATGATTATGGCTGTACCTCCATTGTGATGTTAAACGAAGTCGACTTGTCCCAGGGCTGCCCTCA
GTACTGGCCAGAGGAAGGGATGCTACGATATGGCCCCATCCAAGTGGAATGATGCTTGTTCATAGGAC
TGTGATGTGATCAACCGATTTTTAGGATATGCAATCTAACAAGACCACAGGAAGGTTATCTGATGGTGC
AACAGTTTCAGTACCTAGGATGGGCTTCTCATCGAGAAGTGCCTGGATCCAAAAGGTCACTTTGAAACT
GATACTTCAGGTGAAAAGTGGCAGGAGGAATGCGAGGAAGGGGAAGCCGGACGATTATCCACTGCCTA
AATGGTGGCGGCGAAGTGGCATGTTCTGTGCTATAGGCATCGTTGTTGAAATGGTGAACCGCAAAATG
TTGTCGATGTTTTCCATGCAGTAAAGACACTGAGGAACAGCAAGCCAAACATGGTGAAGCCCGGAGCA
ATACCGTTTTCTGCTATGATGTAGCTTTGGAGTACCTGGAATCATCT

AGCGGACCGACGCGTACGCGGCCGCTCGAGCAGAACTCATCTCAGAAGAGGATCTGGCAGCAAATGATATCC
TGGATTACAAGGATGACGACGATAAGGTTTAA

Protein Sequence: >RC240156 representing NM_001291981
 Red=Cloning site Green=Tags(s)

MDTTAAALPAFVALLLLSPWLLGSAQGQFSAGGCTFDDGPGACDYHQDLYDDFEWVHVSAQEPHYLPP
 EMPQGSYMIVDSSDHPGEKARLQLPTMKENDTHCIDFSYLLYSQKGLNPGLNLNLRVNVKGPLANPIWN
 VTGFTGRDWLRAELAVSTFWPNEYQVIFEAEVSGGRSGYIAIDDIQVLSYPCDKSPHFLRLGDVEVNAGV
 NATFQCIATGRDAVHNKLWLQRRNGEDIPVAQTKNINHRRFAASFRLQEVTKTDQDLYRCVTQSERGSGV
 SNFAQLIVREPPRIAPPQLLGVGPTYLLIQLNANSIIIGDGPIILKEVEYRMTSGSWTETHAVNAPTYKL
 WHLDPDTEYEIRVLLTRPGEGGTGLPGPLITRTKCAEPMRTPKTLKIAEIQARRIAVDWESLGNITRC
 HTFNVTICYHYFRGHNESKADCLDMDPKAPQHVNVHLPPTYNSLKMILTNPGRKESEETIIQTDEDVP
 GPVPVKSLQGTSEFNKIFLNWKEPLDPNGIITQYEISYSSIRSFDAVPVAGPPQTVSNLWNSTHHVFMH
 LHPGTTYQFFIRASTVKGFGPATAINVTNISAPTLDPYEGVDASLNETATTITVLLRPAQAKGAPISAY
 QIVVEELHPHRTKREAGAMECYQVPVYQNAMSGGAPYYFAAELPPGNLPEPAPFTVGDNRTYQGFWNPP
 LAPRKGYNIYFQAMSSVEKETKTQCVRIATKAAATEEPEVIPDPAKQTRVVKIAGISAGILVFILLLLV
 VILIVKSKLAKKRKAMDGNTRQEMTHMVNAMDRSYADQSTLHAEDPLSITFMDQHNFSPRLPNDPLVPT
 AVLVPIIDENHSATAESSRLLDVPYRLCEGTESPYQTGQLHPAIRVADLLQHINLMKTSDSYGFKEEYES
 FFEGQSASWDVAKKDQNRANKRYGNI IAYDHSRVILQPVEDDPSSDYINANYIDIWL YRDGYQRP SHYIA
 TQGPVHETVYDFWRMIWQEQSACIVMVTNLVEVGRVKCYKWPDDEYVYDFKVT CVEMEPLAEYVVRTF
 TLERRGYNEIREVKQFHFTGWPDHGVPYHATGLLSFIRRVKLSNPPSAGPIVVHCSAGAGRTGCYIVIDI
 MLDMAEREGVVDIYNCVKALRSRRINMVQTEEQYIFIHDAILEACLGETAIPVCFKAAAYFDMIRIDSQ
 TNSSHLKDEFQTLNSVTPRLQAEDCSIACLRNDKRFMDMLPPDRCLPFLITIDGESSNYINAALMDS
 YRQPAAFIVTQYPLPNTVKDFWRLVYDYGCTSI VMLNEVDLSQGCPQYWPEEGMLRYGPIQVECMSCSMD
 CDVINRIFRICNLTRPQEGYLMVQQFQYLGWASHREVP GSKRSFLKILQVEKWQEECEE GEGRTIIHCL
 NGGGRSGMFCATGIVVEMVKRQNVVDVFAVKTLRNSKPNMVEAPEQYRFCYDVALEYLESS

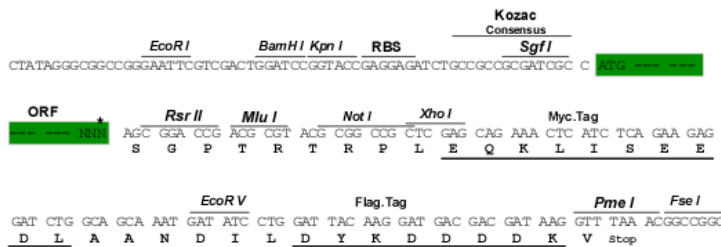
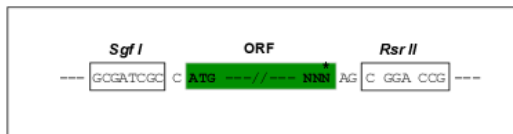
SGPTRTRPLEQKLI SEEDLAANDILDYKDDDDKV

Restriction Sites:

SgfI-RsrII

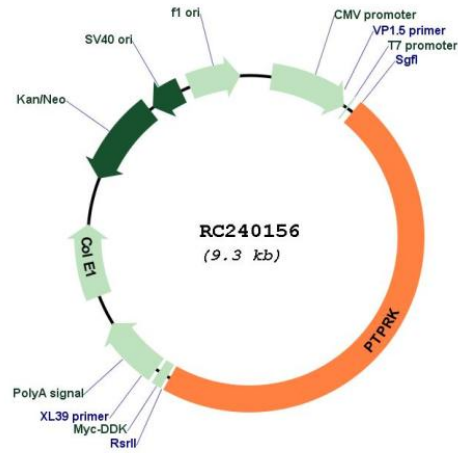
Cloning Scheme:

Cloning sites used for ORF Shuttling:



* The last codon before the Stop codon of the ORF

Plasmid Map:



ACCN: NM_001291981

ORF Size: 4386 bp

OTI Disclaimer: The molecular sequence of this clone aligns with the gene accession number as a point of reference only. However, individual transcript sequences of the same gene can differ through naturally occurring variations (e.g. polymorphisms), each with its own valid existence. This clone is substantially in agreement with the reference, but a complete review of all prevailing variants is recommended prior to use. [More info](#)

OTI Annotation: This clone was engineered to express the complete ORF with an expression tag. Expression varies depending on the nature of the gene.

Components: The ORF clone is ion-exchange column purified and shipped in a 2D barcoded Matrix tube containing 10ug of transfection-ready, dried plasmid DNA (reconstitute with 100 ul of water).

Reconstitution Method:

1. Centrifuge at 5,000xg for 5min.
2. Carefully open the tube and add 100ul of sterile water to dissolve the DNA.
3. Close the tube and incubate for 10 minutes at room temperature.
4. Briefly vortex the tube and then do a quick spin (less than 5000xg) to concentrate the liquid at the bottom.
5. Store the suspended plasmid at -20°C. The DNA is stable for at least one year from date of shipping when stored at -20°C.

RefSeq: [NM_001291981.2](#)

RefSeq Size: 6170 bp

RefSeq ORF: 4389 bp

Locus ID: 5796

UniProt ID: [Q15262](#)

Cytogenetics: 6q22.33

Protein Families: Druggable Genome, Phosphatase, Transmembrane

MW: 165.1 kDa

Gene Summary: The protein encoded by this gene is a member of the protein tyrosine phosphatase (PTP) family. PTPs are known to be signaling molecules that regulate a variety of cellular processes including cell growth, differentiation, mitotic cycle, and oncogenic transformation. This PTP possesses an extracellular region, a single transmembrane region, and two tandem catalytic domains, and thus represents a receptor-type PTP. The extracellular region contains a meprin-A5 antigen-PTP mu (MAM) domain, an Ig-like domain and four fibronectin type III-like repeats. This PTP was shown to mediate homophilic intercellular interaction, possibly through the interaction with beta- and gamma-catenin at adherens junctions. Expression of this gene was found to be stimulated by TGF-beta 1, which may be important for the inhibition of keratinocyte proliferation. [provided by RefSeq, Jul 2008]