

Product datasheet for RC240155

GAPex 5 (GAPVD1) (NM_001282680) Human Tagged ORF Clone

Product data:

Product Type:	Expression Plasmids
Product Name:	GAPex 5 (GAPVD1) (NM_001282680) Human Tagged ORF Clone
Tag:	Myc-DDK
Symbol:	GAPVD1
Synonyms:	GAPex-5; GAPEX5; RAP6
Vector:	pCMV6-Entry (PS100001)
E. coli Selection:	Kanamycin (25 ug/mL)
Cell Selection:	Neomycin
ORF Nucleotide Sequence:	>RC240155 representing NM_001282680 Red=Cloning site Blue=ORF Green=Tags(s)

TTTTGTAATACGACTCACTATAGGGCGCCGGAATTCGTCGACTGGATCCGGTACCGAGGAGATCTGCC
GCCGCGATCGCC

ATGGTGAAACTAGATATTCATACTCTGGCTCATCACCTCAAGCAGGAACGCTTATATGTAACTCTGAGA
AACAGCTCATTGAGGGCTCAATGCAGATGTACTTAAGACAGCTGAAAAGTTGTATCGTACAGCATGGAT
TGCGAAGCAACAGAGAATCAATTTGGATCGGCTTATCATAACCAGTGCTGAAGCTCCCTGCTGAATGT
TGCCAACATGCCAAAATTTGGAAGATACACAATTTGTTGATGGGTATAAGCAATGGGATTTTCAGGAGA
CTGCTTATGGAGAATTCTTGAGTCGATTGAGGGAAAATCCTCGTCTTATTGCCTCCTCTTTGGTTGCTGG
AGAGAACTTAATCAGGAGAACACAAAAGTGTATTTACACAGTTTTTACCTCCCTGTATGGCAATTGC
ATCATGCAAGAAGATGAAAGCTACCTCCTTCAGGTTTTGCGATACTTGATTGAATTTGAACCTAAAGAAA
GTGACAACCCTAGGCGACTTTTGAGGAGAGGAACCTGTGCCTTCAGCATCTTATTTAACTTTTTCTGA
AGGACTGTTTTCTGCCAACTTTTCTCACAGCCACTTACATGAGCCAATTATGCAACTGCTTGTGAA
GATGAAGATCACCTGAAAACAGATCCAAACAAGCTAATTGAGAGGTTCTCTCCATCTCAGCAGGAAAAAC
TCTTTGGAGAGAAGGGCTCAGATAGATTGAGCAAAAAGTTCAAGAAATGGTGGAGTCCAATGAAGCAAA
GCTAGTGGCTTTGGTGAACAAATTTATTGGTTATCTCAAACAGAACACATATTGTTTTCCACATAGTTTA
AGGTGGATCGTGTCTCAGATGTACAAAACCTCTCCTGTGTAGATAGGCTGGAAGTTGGGAGGTACGGG
CAATGTGTACTGATCTCCTGTTGGCCTGCTTCATTTGCTCAGTGTCAATCCAGAACAATATGGAAT
AATTTCCGATGCTCCTATTAATGAAGTAGCAGATTTAATCTGATGCAGGTAGGCCGCTTTTGCAGCAG
TTAGCAATGACTGGCTCTGAAGAGGGAGATCCCCGAACAAGAGCAGCCTTGAAAGTTTGACAAAAGCT
GTGTTGCCGCTTTCCTTGATGTTGTGATTGGGGCCGTGCAGTGGAGACCCCTCCATTGTCTTCCGTCAA
TCTTCTGGAAGGATTGAGCAGAACTGTGGTTTATATAACCTACAGTCAGCTTATTACTCTGGTGAATTTT
ATGAAGAGTGTGATGTCTGGAGATCAACTGAGAGAAGATAGAATGGCTCTTGACAATTTATTGGCAAACC
TACCCCGGCCAAGCCAGGAAAAAGTAGAGTTTAGAAAAGACTCCCTACAATACACCTCAGCTATCTCC
AGCAACCACTCCAGCAAATAAAAAGAATCGATTACCTATAGCAACTCGGAGCAGAAGCCGACCAATATG
CTAATGGACCTACATATGGACCATGAAGGATCATCTCAAGAAACCATCCAGGAGGTGCAACCAGAAGAGG



[View online >](#)

TGTTGGTCATTTCCCTTAGGTACAGGTCCCCAGCTTACTCCAGGGATGATGTCAGAAAATGAGGTCCTAAA
CATGCAGCTTTCGGATGGAGGACAAGGAGATGTCCCTGTTGATGAAAACAACTCCATGGTAAACCTGAT
AAAACCTTGCCTTTCCCTCTGCAGTGATAATCTGGAAGGAATATCTGAAGGTCCTTCAAATCGCTCCA
ATTCAGTGTCTCCCTAGACCTAGAAGGAGAGTCTGTGTCAGAACTTGGAGCAGGACCTTCTGGCAGTAA
TGGAGTTGAAGCTCTACAGCTGTAGAACATGAGCAAGCTACAACACAGGATAACCTTGATGATAAGCTA
AGGAAGTTTAAAATTCGTGACATGATGGGATTAACAGATGATAGGACATATCAGAAAACAGTGAAGTGA
CCTGGAGTACAGACGCTTGGGAAGTGACTTTGACCCTAATATTGATGAAGATCGCTTGAAGAAATTGC
AGGTGCTGCAGCAGAGAACATGTTAGGCAGTTTGCTGTGCTCCAGGTTCCAGGTCAGTGTCTTGTGAC
CCCTGCACTGTTTCTACCATATCAGAGACAACAAGTGAAGCTTGGAGTGTAGAGGTATTGCCAAGTGACT
CAGAGGCCCCAGACCTAAAGCAGGAGGAGCGTCTGCAAGAACTGGAGAGCTGTTCTGGACTGGGTAGCAC
ATCTGATGATACGGATGTCAGGGAGGTCAGTTCGCCGCCAGCACACCAGGCCTCAGTGTGTGTCCGGC
ATAAGTGAACCTCTGAGGATATCCCAATAAGATTGAAGACCTGAGATCTGAGTGCAGCTCTGATTTTG
GGGTAAGATTCTGCTACTAGTCCAGACATGGATGAAATAACTCACGGTGCCACCAGCTGACCTCTCC
TCCTTCTCAGTCAAGTCTCTGTGGCCATGTTTGATCCACTGTCTTACATGAAGGGGCTTCTGTGTG
GTAAGGCCAAAGTTCACTATGCTAGGCCATCGCATCCACCACAGATCCCCAATCCTGGAAGGAGCTG
TGGGAGGAAAATGAGGCCAGGTTGCCAACTTTGGTTCCCATGTTTAACTCCAGCTGAAAATGGAGGCATT
CAAGCAAAGGCATTCTTACCCTGAGAGACTAGTTCGAAGCAGGAGCTCTGATATAGTATCTTCTGTCCGG
AGACCCATGAGTGACCCAGCTGGAACCGGCGTCCAGGAAATGAAGAGCGAGAATCCCTCCAGCTGCAG
CCATTGGTGTACTTCTTTGGTGGCTGCACCTCATTATCATCTTCCATCCCGAGTAAGGACTCCTCAAG
AGGAGAGACTGAAGAACGCAAAGATAGCGATGATGAGAAATCAGACAGGAACAGACCTTGGTGGAGAAAA
CGTTTTGTTTTCAGCCATGCCTAAAGCTCCTATACCATTTAGAAAGAAAGAAAAACAAGAAAAAGACAAAG
ATGATCTGGGGCCTGACAGATTCTAACACTCACAGATGATCCCAGCCCTAGACTCAGTGCACAAGCTCA
GGTGGCTGAGGATATTCTGGACAAATACAGGAATGCCATTAACCGGACCAGCCCAAGTATGGACATG
GCAAACTATGAAAGTACAGAGGTTATGGGTGATGGTGAAGTGACATGATTCTCCCGTACGAAAGCAC
TGCAAGACATCTCGCTGATGATCTCCAGACTCTGCAAGCCAAGCAGCCACCCGAGGATTCAGCTTT
CTCTTACAGAGATGCAAAAAAGAACTGAGGCTTGTCTTTGCTGTGCGACTCTGTTGCCTTCCAGTG
CTGACCCATTCAACAAGGAATGGTTTACCAGACCACAGACCCAGAAGACAATGAAATGTATGCTTCT
TAAAAGTTCAAATAGCTGAAGCAATTAATTTACAAGATAAGAATCTAATGGCTCAACTTCAAGAAACAAT
GCGCTGTGTGCGGTTTTGATAATAGGACTTGTAGGAACTGCTGGCTTCGATTGCTGAGGACTACAGA
AAAAGAGCCCATATATTGCTTATCTCACTCGTTGTGACAAGGACTACAGACCACACAGGCTCACCTGG
AAAGGCTATTGCAAAGAGTTTTGCGGGACAAGAAGTGGCCAATCGATACTTTACCAGTGTCTGTGTGAG
ATTACTGCTTGAGAGCAAAGAAAAGAAGATCAGGGAATTCATTCAGACTTTTCAAGAACTCACCGCAGCT
GACGATAAAACTGCTCAGGTAGAAGATTTTCTGCAGTTTCTTTATGGTGAATGGCCAGGATGTCATAT
GGCAAAACCGCAGTGAAGAACAGCTTCAAGATGCACAGCTGGCCATTGAGCGAAGCGTGTGAACCGGAT
TTTCAAGCTCGCCTTCTACCCTAATCAAGATGGGGACATACTTCGCGACCAGGTTCTTATGAACATATC
CAGAGATTGTCTAAAGTAGTGACTGCAAAATCACAGAGCTCTTTCAGATACCAGAGGTTTATCTTCGAGAAG
CACCATGGCCATCTGCACAATCAGAAATCAGGACAATAAGTGCTTATAAAAACCCCGGGACAAAGTGCA
GTGCATCTGAGAATGTGCTCTACGATTATGAACCTCTGAGCCTGGCCAATGAGGACTCTGTCCCTGGA
GCGGATGACTTTGTTCTGTGTTGGTGTGTTGTTGATAAAGGCAAATCCACCCTGTTTGTGTCTACTG
TGCAATATCAGTAGCTTTTATGCTAGCTGTCTGTCTGGAGAGGAGTCTATTGGTGGATGCAGTTCAC
AGCAGCAGTAGAATTCATTAACCATCGATGACCGAAAG

ACGCGTACGCGCGCGCTCGAGCAGAACTCATCTCAGAAGAGGATCTGGCAGCAATGATATCCTGGATT
ACAAGGATGACGACGATAAGGTTTAA

Protein Sequence: >RC240155 representing NM_001282680
 Red=Cloning site Green=Tags(s)

```

MVKLDIHTLAHHLKQERLYVNSEKQLIQRNLADVLKTAEKLYRTAWIAKQQRINLDRLLIITSAEASPAEC
CQHAKILEDTFVDGYKQLGFQETAYGEFLSRLRENPRLIASSLVAGEKLNQENTQSVIYTVFTSLYGNC
IMQEDESILLQVLRYLIEFELKESDNPRLLRRGTCAFSLFKLFSEGLFSAKFLTATLHEPIMQLLVE
DEDHLETDPNKLIERFSPSQEKLFGKEGSDRFQKQVQEMVESNEAKLVALVKNKFIGYLKQNTYCFPHSL
RWIVSQMYKTLSCVDRLEVGVEVRAMCTDLLLACFICPAVVNPEQYGIISDAPINEVARFNLMQVGRLLQQ
LAMTGSEEGDPRTKSSLGKFDKSCVA AFLDVVIGGRAVETPPLSSVNLLEGLSRTVVYITYSQLITLVNF
MKSVMGSDQLREDRMLDNLNLANLPPAKPGKSSSLEMPYNTPQLSPATTPANKKNRLLPIATRSRRTNM
LMDLHMDHEGSSQETIQEVQPEEVLVISLGTGPQLTPGMMSENEVLNMQLSDGGQGDVPVDENKLGKPD
KTLRFLCSDNLEGISEGPSNRNSVSSLDLEGESVSELGAGPSGSGNGVEALQLEHEQATTQDNLDDKL
RKFEIRDMMGLTDDRDISETVSETWSTDVLGSDFDPNIDEDRLQEIAGAAAENMLGSLCLPGSGSVLLD
PCTGSTISETTSEAWSVEVLPDSEAPDLKQEERLQELESCSGLGSTSDDTDVREVSSRPSTPGLSVVSG
ISATSEDI PNKIEDLRSECSSDFGGKDSVTS PDMDEITHGAHQLTSPPSQSESLAMFDPLSSHEGASAV
VRPKVHYARPSHPPDPPILEGAVGGNEARLPNFGSHVLTPAEMAEFKQRHSYPERLVRSRSSDIVSSVR
RPMSPDPSWNRPGNEERELPPAAAIGATSLVAAPHSSSSPSKDSRGETEERKDSDEKSDRNRPWWRK
RFVSAMPKAPIPFRKKEKQEKDKDDLGPDRFSTLTDPPSRLSAQAQVAEDILDKYRNAIKRTSPSDGAM
ANYESTEVMGDGESAHDSRDEALQNISADDLPDSASQAHPQDSAFSYRDAKKKLRALCSADSVAFPV
LTHSTRNGLPDHTDPEDNEIVCFKVKQIAEA INLQDKNLMAQLQETMRCVCRFDNRTCRKLLASIAEDYR
KRAPYIAYLTRCRQLQTQAHLERLLQRVLRDKEVANRYFTTVCVRLLESKKIREFIQDFQKLTAA
DDKTAQVEDFLQFLYGAMAQDVIWQNAEEQLQDAQLAIERSVMNRIFKLAFYPNQDGDILRDQVLHEHI
QRLSKVV TANHRALQIPEVYLREAPWPSAQSEIRTI SAYKTPRDKVQCILRMCSTIMNLLSLANEDSVPG
ADDFVPLVFLIKANPPCLLSTVQYISSFYASCLSGEESYWWWQFTA AVEFIKTIDDRK
  
```

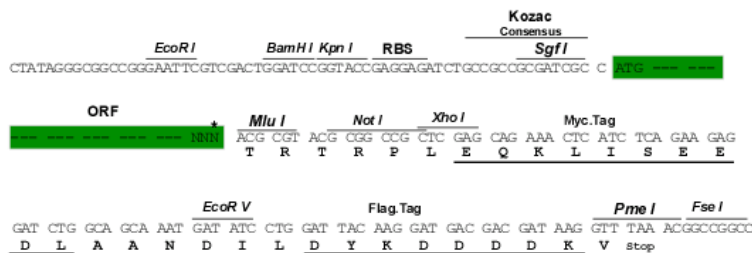
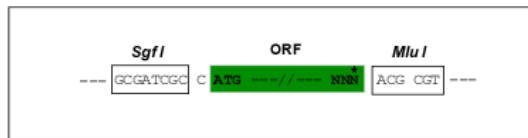
TRTRPLEQKLISEEDLAANDILDYKDDDDKV

Restriction Sites:

SgfI-MluI

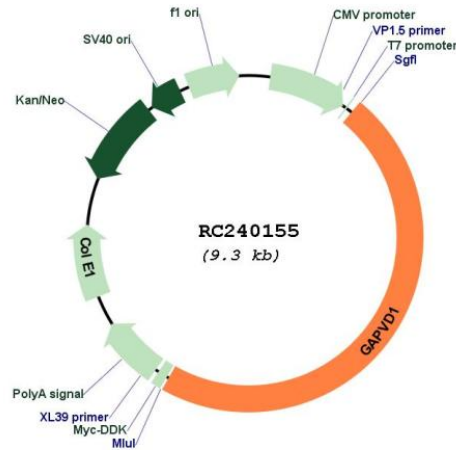
Cloning Scheme:

Cloning sites used for ORF Shuttling:



* The last codon before the Stop codon of the ORF

Plasmid Map:



ACCN: NM_001282680

ORF Size: 4380 bp

OTI Disclaimer: The molecular sequence of this clone aligns with the gene accession number as a point of reference only. However, individual transcript sequences of the same gene can differ through naturally occurring variations (e.g. polymorphisms), each with its own valid existence. This clone is substantially in agreement with the reference, but a complete review of all prevailing variants is recommended prior to use. [More info](#)

OTI Annotation: This clone was engineered to express the complete ORF with an expression tag. Expression varies depending on the nature of the gene.

Components: The ORF clone is ion-exchange column purified and shipped in a 2D barcoded Matrix tube containing 10ug of transfection-ready, dried plasmid DNA (reconstitute with 100 ul of water).

Reconstitution Method:

1. Centrifuge at 5,000xg for 5min.
2. Carefully open the tube and add 100ul of sterile water to dissolve the DNA.
3. Close the tube and incubate for 10 minutes at room temperature.
4. Briefly vortex the tube and then do a quick spin (less than 5000xg) to concentrate the liquid at the bottom.
5. Store the suspended plasmid at -20°C. The DNA is stable for at least one year from date of shipping when stored at -20°C.

RefSeq: [NM_001282680.2](#)

RefSeq Size: 7029 bp

RefSeq ORF: 4383 bp

Locus ID: 26130

UniProt ID: [Q14C86](#)

Cytogenetics: 9q33.3

MW: 163.3 kDa

Gene Summary: Acts both as a GTPase-activating protein (GAP) and a guanine nucleotide exchange factor (GEF), and participates in various processes such as endocytosis, insulin receptor internalization or LC2A4/GLUT4 trafficking. Acts as a GEF for the Ras-related protein RAB31 by exchanging bound GDP for free GTP, leading to regulate LC2A4/GLUT4 trafficking. In the absence of insulin, it maintains RAB31 in an active state and promotes a futile cycle between LC2A4/GLUT4 storage vesicles and early endosomes, retaining LC2A4/GLUT4 inside the cells. Upon insulin stimulation, it is translocated to the plasma membrane, releasing LC2A4/GLUT4 from intracellular storage vesicles. Also involved in EGFR trafficking and degradation, possibly by promoting EGFR ubiquitination and subsequent degradation by the proteasome. Has GEF activity for Rab5 and GAP activity for Ras.[UniProtKB/Swiss-Prot Function]