

Product datasheet for **RC240152**

KDM6A (NM_001291415) Human Tagged ORF Clone

Product data:

Product Type:	Expression Plasmids
Product Name:	KDM6A (NM_001291415) Human Tagged ORF Clone
Tag:	Myc-DDK
Symbol:	KDM6A
Synonyms:	bA386N14.2; KABUK2; UTX
Vector:	pCMV6-Entry (PS100001)
E. coli Selection:	Kanamycin (25 ug/mL)
Cell Selection:	Neomycin
ORF Nucleotide Sequence:	>RC240152 representing NM_001291415 Red=Cloning site Blue=ORF Green=Tags(s)

TTTTGTAATACGACTCACTATAGGGCGCCGGAATTCGTCGACTGGATCCGGTACCGAGGAGATCTGCC
GCC**GCGATCGCC**

ATGAAATCCTGCGGAGTGTGCTCGCTACCGCCGCGCTGCCGCCGCGCTTTCGGTGATGAGGAAAAGA
AAATGGCGGGCGGAAAAGCGAGCGGCGAGAGCGAGGAGGCGTCCCCAGCCTGACAGCCGAGGAGAGGGA
GGCGCTCGGCGGACTGGACAGCCGCTCTTTGGGTTTCGTGAGATTCATGAAGATGGCGCCAGGACGAAG
GCCCTACTGGGCAAGGCTGTTTCGCTGCTATGAATCTCTAATCTTAAAAGCTGAAGAAAAGTGGAGTCTG
ATTTCTTTTGTCAATTAGGTCACCTTCAACCTCTTATTGGAAGATTATCCAAAAGCATTATCTGCATACCA
GAGGTACTACAGTTTACAGTCTGACTACTGGAAGAATGCTGCCTTTTATATGGTCTTGGTTTGGTCTAC
TTCCATTATAATGCATTTACAGTGGGCAATTAAGCATTTCAGGAGGTGCTTTATGTTGATCCCAGCTTTT
GTCGAGCCAAGGAAATTCATTTACGACTTGGGCTTATGTTCAAAGTGAACACAGACTATGAGTCTAGTTT
AAAGCATTTTCAGTTAGCTTTGGTTGACTGTAATCCCTGCACTTGTCCAATGCTGAAATCAATTTAC
ATTGCCACTTATATGAAACCCAGAGGAAATATCATTCTGCAAAAAGCCTTATGAACAATTTTGCAGA
CAGAGAATCTTTCTGCACAAGTAAAAGCAACTGTCTTACAACAGTTAGGTTGGATGCATCACACTGTAGA
TCTCCTGGGAGATAAAGCCACCAAGGAAAGCTATGCTATTCAAGTATCTCCAAAAGTCTTGGAAAGCAGAT
CCTAATCTCGCCAGTCTGTTATTTCTCGGAAGGTGCTATTCAAGTATTGGGAAAAGTTCAGGATGCCCT
TTATATCTTACAGGCAGTCTATTGATAAATCAGAAGCAAGTGCAGATACATGGTGTTCATAGGTGTGCT
ATATCAGCAGCAAAATCAGCCATGGATGCTTTACAGGCCTATATTTGTGCTGTACAATTGGACCATGGC
CATGCTGCAGCCTGGATGGACCTAGGCACTCTCTATGAATCCTGCAACCAGCCTCAGGATGCCATTAAT
GCTACTTAAATGCAACTAGAAGCAAAAGTTGTAGTAATACCTCTGCACTGCAGCACGAATTAAGTATTT
ACAGGCTCAGTTGTAACTTCCACAAGGTAGTCTACAGAATAAACTAAATTACTTCTAGTATTGAG
GAGGCGTGGAGCCTACCAATCCCGCAGAGCTTACCTCCAGGCAGGTGCCATGAACACAGCACAGCAGG
CATGTAAACCTCATCATCAAACTGAACTGTATTAGGCTCAGTCAAACACCAATTTACAGCAATC
CTTGCCACTACACATGATTCCTTCTAGCCAAGTAGATGACCTGTCCAGTCTGCCAAGAGGAAAAGAAACA
TCTAGTCCAACAAAGAATACTTCTGACAATTGGAGTGGTGGACATGCTGTGTCACATCCTCCAGTACAGC



[View online >](#)

AACAAGCTCATTCATGGTGTGGTGGACACAGAAATTACAGCATTGGAACAGCTCCGCGCAAATAGAAA
TAATTTAAATCCAGCACAGAACTGATGCTGGAACAGCTGGAAAGTCAGTTTGTCTTAATGCAACAACAC
CAATGAGACCAACAGGAGTTGCACAGGTACGATCTACTGGAAATCCTAATGGGCCAACAGCTGACTCAT
CACTGCCTACAACTCAGTCTCTGGCCAGCAGCCACAGCTTGCTCTGACCAGAGTGCCTAGCGTCTCTCA
GCCTGGAGTCCGTCTGCCTGCCTGGCCAGCCTTTGGCCAATGGACCCTTTCTGCAGGCCATGTTCCC
TGTAGCACATCAAGAACGCTGGGAAGTACAGACACTATTTGATAGGCAATAATCATATAACAGGAAGTG
GAAGTAATGGAAACGTGCCTTACCTGCAGCGAAACGCACTCACTTACCTCATAAACCGCACAAACCTGAC
CAGCAGCGCAGAGGAGCGTGGAAAAACCAACTATCTAACTCCACTCAGGGGCTTCACAAAAGGTCAGAGT
TCACATTCGCGCAGGTCCATATGGTGAACGACCTCTCTCTCCACTGGGCCTTCCCAGCATCTCCAGGCAG
CTGGCTCTGGTATTCAGAATCAGAACGGACATCCCACCCTGCCTAGCAATTCAGTAACACAGGGGGCTGC
TCTCAATCACCTCTCTCTCACACTGCTACCTCAGGTGGACAACAAGGCATTACCTTAACCAAAGAGAGC
AAGCCTTCAGGAAACATATTGACGGTGCCTGAAACAAGCAGGCACACTGGAGAGACACTAACAGCACTG
CCAGTGTGAGGGGACTTCCATATCATGTCCATCAGATGACGGCAGATGCTGTTTGCAGTCTAGCCATGG
AGATTCTAAGTCACCAGGTTTACTAAGTTCAGACAATCCTCAGCTCTCTGCCTTGTGATGGGAAAAGCC
AATAACAATGTGGTACTGGAACCTGTGACAAAGTCAATAACATCCACCCAGCTGTTTCATACAAAGACTG
ATAACTCTGTTGCCTCTTACCATCTTACGCCATTTCAACAGCAACACCTTCTCCAAAATCCACTGAGCA
GACAACCACAAACAGTGTACCAGCCTTAAACAGCCCTCACAGTGGGCTACACACAATTAATGGAGAGGG
ATGGAAGAATCTCAGAGCCCATGAAAACAGATCTGCTTCTGGTTAACCAAAACCTAGTCCACAGATCA
TACCATCAATGTCTGTGCCATATACCCAGCTCAGCAGAAGTCTGAAGGCATGCAGGAATCTAGGTAA
AAATGGCTTATCTAACAGTAGCATTGTTGGATAAATGTCCACCTCCAAGACCACCATCTTACCATAC
CCTCCCTTGCCAAAGGACAAGTTGAATCCACCTACACCTAGTATTTACTTGGAAAATAACAGTGTGCTT
CTTTCTCCATTACATCAATTTGTACAAATCCGAACAACCTGTTACAGTAATACGTGGCCTTGTCTGG
AGCTCTTAAGTTAGACCTGGGACTTTTCTACTAAAACCTTGGTGGAAAGCTAACAAATGAACATATGGTA
GAAGTGAGGACACAGTTGTTGCAGCCAGCAGATGAAAACCTGGGATCCCACTGGAACAAAGAAAATCTGGC
ATTGTGAAAAGTAATAGATCTCATACTACAATTGCTAAATATGCACAGTACCAGGCCTCCTCATTCCAGGA
ATCATTGAGAGAAGAAAATGAAAAAGAAGTATCATAAAGACCACTCAGATAGTGAATCTACATCGTCA
GATAATTCTGGGAGGAGGAGGAAAGGACCCTTTAAAACCATAAAGTTTGGGACCAATATTGACCTATCTG
ATGACAAAAAGTGGAAAGTGCAGCTACATGAGCTGACTAACTTCTGCTTTTGTGCGTGTGATCAGC
AGGAAATCTTCTAAGCCATGTTGGTCATACCATATTGGGCATGAACACAGTTCAACTATACATGAAAGTT
CCAGGGAGCAGAACACCAGGTCATCAGGAAAATAACAACCTTCTGTTCAAGTAAACATAAATATTGGCCCAG
GTGACTGTGAATGTTTGTGTTCTGAAAGTTACTGGGGTGTCTGAATGACTTCTGTGAAAAAATAA
TTTGAATTCCTAATGGGTTCTTGGTGGCCAATCTTGAAGATCTTATGAAGCAATGTTCCAGTGTAT
AGGTTTATTACAGCAGCTGGAGATTTGGTCTGGATAAATGCAGGCACTGTTCAATGGGTTTCAAGGCTATTG
GCTGGTGAACAACATTGCTTGGAAATGTTGGTCCACTACAGCCTGCCAGTATAAATGGCAGTGGAAACG
GTACGAATGGAACAAATTGCAAAGTGTGAAGTCAATAGTACCCATGGTTCATCTTTCCTGGAATATGGCA
CGAAATATCAAGGTCTCAGATCCAAAGCTTTTGAAGTATTAAGTATTGCTTCTAAGAAGTCTGAAGC
AATGTCAGACATTGAGGGAAGCTCTCATTGCTGCAGGAAAAGAGATTATGGCATGGGCGGACAAAAGA
AGAACCAGCTCATTACTGTAGCATTGTGAAGTGGAGGTTTTTGTCTGCTTTTTGTCACTAATGAGAGT
AATTCACGAAAGACCTACATAGTACATTGCCAAGATTGTGCACGAAAAACAAGCGGAAACTTGGAAAAC
TTGTGGTCTAGAACAGTACAAAATGGAGGACCTGATGCAAGTCTATGACCAATTTACATTAGCTCCTCC
ATTACCATCCGCCTCATCT

ACGCGTACGCGGCCGCTCGAGCAGAACTCATCTCAGAAGAGGATCTGGCAGCAAATGATATCCTGGATT
ACAAGGATGACGACGATAAGGTTTAA

Protein Sequence: >RC240152 representing NM_001291415
 Red=Cloning site Green=Tags(s)

MKSCGVS LATAAAAA AFGDEEKKMAAGKASGESEEEASPSLTAEEREALGGLDSRLFGFVRFHEDGARTK
 ALLGKAVRCYESLILKAEGKVESDFFCQLGHFNLLLEDYPKALSAYQRYYSLSQSDYWKNAAFLYGLGLVY
 FHYNAFQWAIKAFQEVLVYDPSFCRAKEIHLRLGLMFKVNTDYESSLKHQQLALVDCNPCTLSNAEIQFH
 IAHLYETQRKYHSAKEAYEQLLQTFENLSAQVKATVLLQQLGWMHHTVDLLGDKATKESYAIQYLQKSLEAD
 PNSGQSWYFLGRCYSSIGKVQDAFISYRQSIDKSEASADTWCSIGVLYQQQNQPM DALQAYICAVQLDHG
 HAAAWMDLGTLYESCNQPQDAIKCYLNATR SKSCSNTSALAARIKYLQAQLCNLPQGS LQNKTKLLPSIE
 EAWSLPIPAELTSRQGAMNTAQQACKPHHPNTEPVLGLSQTPISSQQLPLHMIPSSQVDDLSSPAKRKRT
 SSPTKNTSDNWSGGHAVSHPPVQQQAHSWCLTPQKLQHLQLRANRNNLNPAQKLMLEQLESQFVLMQQH
 QMRPTGVAQVRSTGIPNGPTADSSLP TNSVSGQQPQLALTRVPSVSQPGVRPACPGQPLANGPFSAGHVP
 CSTSRTL GSTDTILIGNNHITGSGSNGNVPYLQRNAL TLPHNRTNL TSSAEEPWKNQLSNSTQGLHKGQS
 SHSAGPNGERPLSSTGPSQHLQAAGSGIQNQNGHPTLPSNSVTQGAALNHLSSHTATSGGQQGITLTKES
 KPSGNIL TYPETS RHTGETPNSTASVEGLPNHVHQMTADAVCSPSHGDSKSPGLLSSDNPQLSALLMGKA
 NNNVGTGTCDKVNNIHPAVHTKTDNSVASSPSSAISTATPSPKSTEQT TNSVTSLNSPHSGLHTINGEG
 MEESQSPMKTDLLL VNHKPSPIPSMSVSIYPSAEVLKACRNLGKNGLSNSSILLDKCPPRPPSSPY
 PPLPKDKLNPTPSIYLENKRDAFFPPLHQFCTNPNPVTVIRGLAGALKLDLGLFSTKTLVEANNEH MV
 EVRTQLLQPADENWDPTGTKKIWHCESNRSHTTIAKYAQYQASSFQESLREENEKRSHHKDHSDESTSS
 DNSGRRRKGPFKTIKFGTNIDLSDDKKWLQLHELTKLPAFVRVVSAGNLLSHVGHITILGMNTVQLYMKV
 PGSRTPGHQENNFCSVNIINIGPGDCEWFVPEGYWGLNDFCEKNNLNF LMGSWWPNLEDLYEANVPVY
 RFIQRPGDLVWINAGTVHWVQAIGWCNNIAWNVGPLTACQYKLAVERYEWNKLSVKSIVPMVHLSWNMA
 RNIKVSDPKLFEMIKYCLLRTLKQCQTLREALIAGKEIIWHGRTKEEPAHYCSICEVEVDFLLFVTNES
 NSRKYIVHCQDCARKTSGNLENFVVLEQYKMEDLMQVYDQFTLAPPLPSASS

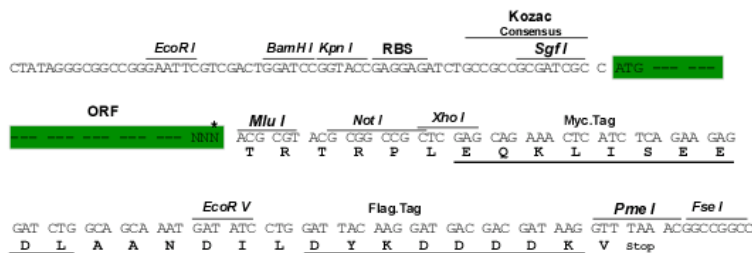
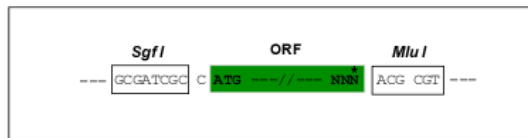
TRTRPLEQKLISEEDLAANDILDYKDDDDKV

Restriction Sites:

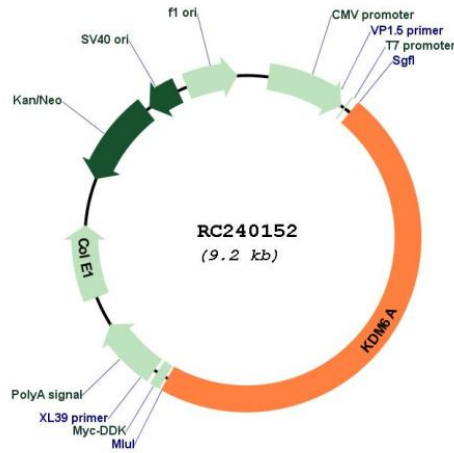
SgfI-MluI

Cloning Scheme:

Cloning sites used for ORF Shuttling:



* The last codon before the Stop codon of the ORF

Plasmid Map:


ACCN: NM_001291415

ORF Size: 4359 bp

OTI Disclaimer: The molecular sequence of this clone aligns with the gene accession number as a point of reference only. However, individual transcript sequences of the same gene can differ through naturally occurring variations (e.g. polymorphisms), each with its own valid existence. This clone is substantially in agreement with the reference, but a complete review of all prevailing variants is recommended prior to use. [More info](#)

OTI Annotation: This clone was engineered to express the complete ORF with an expression tag. Expression varies depending on the nature of the gene.

Components: The ORF clone is ion-exchange column purified and shipped in a 2D barcoded Matrix tube containing 10ug of transfection-ready, dried plasmid DNA (reconstitute with 100 ul of water).

Reconstitution Method:

1. Centrifuge at 5,000xg for 5min.
2. Carefully open the tube and add 100ul of sterile water to dissolve the DNA.
3. Close the tube and incubate for 10 minutes at room temperature.
4. Briefly vortex the tube and then do a quick spin (less than 5000xg) to concentrate the liquid at the bottom.
5. Store the suspended plasmid at -20°C. The DNA is stable for at least one year from date of shipping when stored at -20°C.

RefSeq: [NM_001291415.2](#)

RefSeq Size: 5941 bp

RefSeq ORF: 4362 bp

Locus ID: 7403

Cytogenetics: Xp11.3

MW: 160.2 kDa

Gene Summary: This gene is located on the X chromosome and is the corresponding locus to a Y-linked gene which encodes a tetratricopeptide repeat (TPR) protein. The encoded protein of this gene contains a JmjC-domain and catalyzes the demethylation of tri/dimethylated histone H3. Multiple alternatively spliced transcript variants have been found for this gene. [provided by RefSeq, Apr 2014]