

Product datasheet for **RC240149**

ROBO2 (NM_001290040) Human Tagged ORF Clone

Product data:

Product Type:	Expression Plasmids
Product Name:	ROBO2 (NM_001290040) Human Tagged ORF Clone
Tag:	Myc-DDK
Symbol:	ROBO2
Synonyms:	SAX3
Vector:	pCMV6-Entry (PS100001)
E. coli Selection:	Kanamycin (25 ug/mL)
Cell Selection:	Neomycin
ORF Nucleotide Sequence:	>RC240149 representing NM_001290040 Red=Cloning site Blue=ORF Green=Tags(s)

TTTTGTAATACGACTCACTATAGGGCGCCGGAATTCGTCGACTGGATCCGGTACCGAGGAGATCTGCC
GCC**GCGATCGCC**

ATGAGTCTGCTGATGTTACACAACACTGCTCTGTGGATTTTTATATGTTCCGGTTGATGGATCGCGTC
TTCGCCAGGAGGACTTTCCCGCGGATTGTGGAGCATCCTCCGATGTCATCGTCTAAGGGCGAGCC
CAGCAGCTGAACTGCAAGGCGGAGGGCCGCCAACGCCACCATTGAGTGGTACAAAGATGGGGAGCGA
GTGGAGACTGACAAGGACGATCCCGGTCCACAGGATGCTTCTGCCAGCGGATCCTATTCTTCTTGC
GCATCGTGACCGGGCGCAGGAGTAAACCTGATGAAGGAAGCTACGTTTGTGTTGCGAGGAACTATCTTGG
TGAAGCAGTGAGTCGAAATGCGTCTCTGGAAGTGGCATTGTTACGAGATGACTTCCGACAAAACCCACA
GATGTTGTAGTGGCAGCTGGAGAGCCTGCAATCCTGGAGTGCCAGCCTCCCGGGGACACCCAGAACCCA
CCATCTACTGGAAAAAGACAAAGTTCGAATTGATGACAAGGAAGAAAGAATAAGTATCCGTGGTGGAAA
ACTGATGATCTCCAATACCAGGAAAAGTGTGACAGGGATGATACTTGTGTTGGTACCAATATGGTGGGA
GAAAGGGACAGTGACCCAGCAGAGCTGACTGTCTTTGAACGACCCACATTTCTCAGGAGGCCAATTAACC
AGTGGTACTGGAGGAAGAAGCTGTAGAATTCGTTGTCAAGTCCAAGGAGATCCTCAACCACTGTGAG
GTGGAAAAAGGATGATGCAGACTTGCCAAGAGGAAGGTATGACATCAAAGACGATTACACACTAAGAATT
AAAAAGACCATGAGTACAGATGAAGGCACCTATATGTGTATTGCTGAGAATCGGGTTGGAAAAATGGAAG
CCTCTGTACTACTCACCGTCCGAGCTCGCCCTGTTGCTCCCCACAGTTTGTGGTTCGGCCAAGAGATCA
GATTGTTGCTCAAGGTCGAACAGTGACATTTCCCTGTGAAACTAAAGGAAACCCACAGCCAGCTGTTTTT
TGGCAGAAAGAAGGCAGCCAGAACCTACTTTTCCCAAACCAACCCAGCAGCCCAACAGTAGATGCTCAG
TGTCACCAACTGGAGACCTCACAATCACAACATTCAACGTTCCGACGCGGGTTACTACATCTGCCAGGC
TTTAACGTGGCAGGAAGCATTITAGCAAAGCTCAACTGGAGGTTACTGATGTTTTGACAGATAGACCT
CCACCTATAATTCTACAAGGCCAGCCAACCAACGCTGGCAGTGGATGGTACAGCGTTACTGAAATGTA
AAGCCACTGGTATCCTCTTCTGTAATTAGCTGGTAAAGGAGGGATTTACTTTCCGGGTAGAGATCC
AAGAGCAACAATTCAAGAGCAAGGCACACTGCAGATTAAGAATTTACGGATTTCTGATACTGGCACTTAT
ACTTGTGTGGCTACAAGTTCAGTGGAGAGACTTCTGGAGTGCAGTGTGGATGTGACAGAGTCTGGAG



CAACAATCAGTAAAACTATGATTTAAGTGACCTGCCAGGGCCACCATCCAAACCGCAGGTCACTGATGT
TACTAAGAACAGTGTACCTTGTCTGGCAGCCAGGTACCCTTGGAAACCTTCCAGCAAGTGCATATATC
ATTGAGGCTTTCAGCCAATCAGTGAGCAACAGCTGGCAGACCGTGGCAAACCATGTAAGACCACCTCT
ATACTGTAAGAGGACTGCGGCCAATAACAATCTACTTATTCATGGTCAGAGCGATCAACCCCAAGGTCT
CAGTGACCCAAGTCCCATGTGAGATCCTGTGCGCACACAAGATATCAGCCCACCAGCACAAAGGAGTGGAC
CACAGGCAAGTGCAGAAAGAGCTAGGAGATGTCTTGTCCGTCTCATAATCCAGTTGTGCTGACTCCCA
CCACGGTTCAGGTACATGGACGGTTGATCGCCAACCCAGTTTATCCAAGGCTACCGAGTGTATGTATCG
TCAGACTTCAGGTCTGCAGGCGACATCTTCGTGGCAGAATTTAGATGCCAAAGTCCCGACTGAACGAAGT
GCTGTCTTAGTCAACCTGAAAAAGGGGGTACTTATGAAATTAAGTACGGCCATATTTTAAAGTTC
AAGGAATGGATAGTGAATCTAAAACGGTTCGTAATACTGAAGAAGCCCAAGTGGCCACCACAGTCTGT
CACTGTACTGACAGTTGGAAGCTACAATAGCACAAAGTATTAGTGTTCCTGGGATCCTCCTCCAGAT
CACCAGAATGGAATTATCCAAGAATAACAAGATCTGGTGTCTAGGAAATGAAACGCGATTCCATATCAACA
AAACTGTGGATGCAGCCATTCGGTCCGTAATAATTGGTGGATTATCCCAGGTATTCATACCGGGTAGA
GGTTGCAGCTAGTACCAGTGCAGGGTGGAGTAAAGAGTGAGCCACAGCCAATAATAATCGGGAGACGC
AATGAAGTTGTCATTACTGAAAAACAATAACAGCATAACTGAGCAATCACTGATGTGGTGAAGCAACCAG
CCTTTATAGCTGGTATTGGTGGTGCCTGTGGTAATTCTGATGGTTTTAGCATATGGTTGATTGGCG
AAGAAAGAAGAGGAAGGGACTCAGTAATTATGCTGTTACGTTTCAAGAGGAGATGGAGGACTAATGAGC
AATGGAAGCCGTCCAGGTCTTCTCAATGCTGGTATCCCAGCTATCCATGGCTTGCTGATTCTTGGCCAG
CCACGAGCTTGCCAGTAAATAATAGCAACAGTGGCCAAATGAGATTGGAATTTTGGCCGTGGAGATGT
GCTGCCACCAGTTCAGGCCAAGGGGATAAAACAGCAACGATGCTCTCAGATGGAGCCATTTATAGTAGC
ATTGACTTCACTACAAAACAGTTACAACAGTTCAGCCAAATAACACAGGCTACCCCATATGCCACGA
CACAGATCTTGCATTC AACAGCATAACATGAATTGGCTGTGATCTGCCTGATCCACAATGAAAAAGCTC
AATTCAGCAAAAAACAGATCTGATGGGATTTGGTTATTCTACTGATCAGAACAAGGTAACAATGGT
GGGAAAGGTGAAAAAAGAAGAAAAATAAAAACTCTTCTAAACCACAGAAAAACAATGGATCCACTTGGG
CCAATGTCCCTCTACCTCCCCCCCAGTCCAGCCCTTCTGGCACGGAGCTGGAACACTATGCAGTGGGA
ACAACAAGAAAAATGGCTATGACAGTGTAGCTGGTGGCCACCATTGCCAGTACAAACTTACTTACACCAA
GGTCTGGAAGATGAACTGGAAGAAGATGATGATAGGGTCCCAACACCTCTGTTCCGAGGCGTGGCTTCT
CTCCTGCTATCTCTTTGGACAGCAGTCCACTGCAACTTACTCCATCCCACGGGAAGAGATGCAACC
CATGCTGCAGGCTCACCTGGATGAGTTGACAAGAGCCTATCAGTTTGATATAGCAAAAACAACATGGCAC
ATTCAAAGCAATAATCAACCTCCACAGCCTCCAGTTCACCGTTAGGTTATGTGCTGGAGCCTTGATTT
CTGATTTGAAACGGATGTTGCAGATGATGATGCCGACGACGAAGAGGAAGCTTTAGAAATCCCCAGGCC
CCTGAGAGCACTGGACCAGACTCCTGGATCCAGCATGGACAATCTAGACAGCTCTGTGACAGGTTCAATG
GTAATGGATGGGCTCTGCATCTGATGAGGATCGTAACTTTTCTAGTCATAGATCTAGTGTAGGTAGCT
CCTCAGATGGCTCTATCTTTGCCAGCGCAGTTTTGCACAAGCACTGGTGGCAGCAGCAGATAAAGCTGG
TTTTAGGCTGGATGGAACCAGCCTTACAAGAACAGGAAAAGCCTTTACCTCCTCTCAAAGACCTCGACCT
ACCAGCCCATTTTCTACTGACAGTAACACCAGTGCAGCCCTGAGTCAAAGTCAGAGGCTCGGCCACTA
AAAAACAAGGGAGGGCGGATGGACCAACAACCAGCATTGCCTCATCGAAGGGAAGGAATGACAGATGA
GGAGGCCCTTGGTCCCTATAGCAAGCCAGTTTCCCATCTCCAGGTGGCCACAGCTCATCAGGAACAGCT
TCTTCTAAGGGATCCACTGGACCTAGGAAAACCGAGGTGTTGAGAGCAGGCCACCAGCGCAATGCCAGCG
ACCTTCTTGACATAGGATATATGGGCTCCAACAGTCAAGGACAGTTTACAGGTGAATTA

ACGCGTACGCGGCCGCTCGAGCAGAACTCATCTCAGAAGAGGATCTGGCAGCAATGATATCCTGGATT
ACAAGGATGACGACGATAAGGTTTAA

Protein Sequence: >RC240149 representing NM_001290040
 Red=Cloning site Green=Tags(s)

```
MSLLMFTQLLLCGFLYVRVDGSRLRQEDFPPIIVEHPSDVIIVSKGEP TLLNCKAEGRPTPTIEWYKDG ER
VETDKDDPRSHRMLLPSGSLFFLRIVHGRRSKPDEGSYVCVARNYLGEAVSRNASLEVALLRDDFRQNP T
DVVVAAGEPAILECQPPRGHPEPTIYWKKDKVRIDDKEERISIRGGKLMISNTRKSDAGMYTCVGTNMVG
ERDSDPAELTVFERPTFLRRPINQVVL EEEAVEFR CQVQGDQPQTVRWKKDDADLPRGRYDIKDDYTLRI
KKT MSTDEGT YMCIAENRVGKMEASATLTVRARPVAPPQFVVRPRDQIVAQGRVTVP CETKGNPQPAVF
WQKEGSQNL LFPNQPPNSRCSVSPTGDLTITNIQRSDAGY YICQALTVAGSILAKAQLEVTDVLTDRP
PPIILQGPANQTLAVDGTALLKCKATGDPLPVISWLKEGFTFPGDRPRATIQEQGLQIKNLRISDTGTY
TCVATSSSGETSWSAVLDVTEGATISKNYDLSDLPGPPSKPQVTDVTKNSVTL SWQPGTPTLPASAYI
IEAFS QSVSNWQTVANHVKTLLYTVRGLRPNTIYLFMVRAINPQGLSDPSPMSDPVRTQDISPPAQVD
HRQVQKELGDVLRV LHNPPVLTPTTVQVTWTVDRQPQFIQGYRVMYRQTSGLQATSSWQNLDAKVPTERS
AVLVNLKKGVTYEIKVRPYFNEFQGM DSEKTVRTTEEAPSAPPQSVTVLTVGSYNST SISVSWDPPPPD
HQNGIIQEYKIWCLGN ETRFHINKTVDAAIRSVIIGGLFPGIQYRVEVAASTSAGVGVKSEPQPIIIGRR
NEVVITENNNSITEQITDVVKQPAFIAGIGGACWVILMGFSIWL YWRRKKR KGLSNYAVTFQRGDGGLMS
NGSRPGLLNAGDPSYPWLADSWPATSLPVNNSNSGPNEIGNFGRGDVLPVPVGGDKTATMLSDGAIYSS
IDFTTKTSYNSSSQITQATPYATTQILHSNSIHELAVDLPDPQWKSSIQKTDLMGFYSLPDQNKGNNG
GKGGKKKKNKNSKPKQKNNGSTWANVPLPPPVPQPLPGTELEHYAVEQQENGYSDSDSWCPPLPVQTYLHQ
GLEDELEEDDDRVP TPPVRGVASSPAISFGQQSTATLTPSPREEMQ PMLQAHDELTRAYQFDIAKQ TWH
IQSNQPQPVPVPLGYVSGALISDLETDVADDADDEEEALEIPRPRALDQTPGSSMDNLDSSV TGM
VNGWGSASDEDRNFSSHRSSVSGSSDGSIFASGSFAQALVAADKAGFRLDG TSLTRTGKAF TSSQRPRP
TSPFSTDSNTSAALSQSQRPRPTKHKHGG RMDQQPALPHRREGMTDEEALVPYSKPSFPSPGGHSSSGTA
SSKGSTGPRKTEVLRAGHQ RNASDLLDIGYMGSNSQGGFTGEL
```

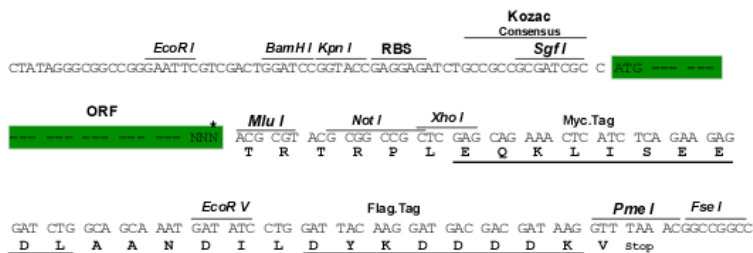
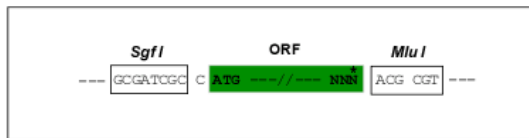
TRTRPLEQKLISEEDLAANDILDYKDDDDKV

Restriction Sites:

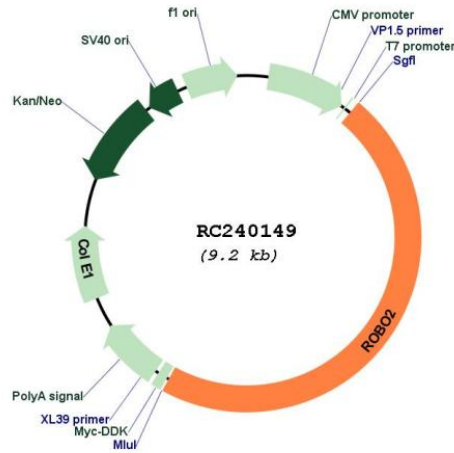
Sgfl-MluI

Cloning Scheme:

Cloning sites used for ORF Shutting:



* The last codon before the Stop codon of the ORF

Plasmid Map:


ACCN: NM_001290040

ORF Size: 4329 bp

OTI Disclaimer: The molecular sequence of this clone aligns with the gene accession number as a point of reference only. However, individual transcript sequences of the same gene can differ through naturally occurring variations (e.g. polymorphisms), each with its own valid existence. This clone is substantially in agreement with the reference, but a complete review of all prevailing variants is recommended prior to use. [More info](#)

OTI Annotation: This clone was engineered to express the complete ORF with an expression tag. Expression varies depending on the nature of the gene.

Components: The ORF clone is ion-exchange column purified and shipped in a 2D barcoded Matrix tube containing 10ug of transfection-ready, dried plasmid DNA (reconstitute with 100 ul of water).

Reconstitution Method:

1. Centrifuge at 5,000xg for 5min.
2. Carefully open the tube and add 100ul of sterile water to dissolve the DNA.
3. Close the tube and incubate for 10 minutes at room temperature.
4. Briefly vortex the tube and then do a quick spin (less than 5000xg) to concentrate the liquid at the bottom.
5. Store the suspended plasmid at -20°C. The DNA is stable for at least one year from date of shipping when stored at -20°C.

RefSeq: [NM_001290040.2](#)

RefSeq Size: 8884 bp

RefSeq ORF: 4332 bp

Locus ID: 6092

UniProt ID: [Q9HCK4](#)

Cytogenetics: 3p12.3

Protein Families: Druggable Genome, Transmembrane

Protein Pathways: Axon guidance

MW: 158.2 kDa

Gene Summary: The protein encoded by this gene belongs to the ROBO family, part of the immunoglobulin superfamily of proteins that are highly conserved from fly to human. The encoded protein is a transmembrane receptor for the slit homolog 2 protein and functions in axon guidance and cell migration. Mutations in this gene are associated with vesicoureteral reflux, characterized by the backward flow of urine from the bladder into the ureters or the kidney. Alternative splicing results in multiple transcript variants. [provided by RefSeq, Feb 2014]