

Product datasheet for **RC240148**

AIP1 (MAGI2) (NM_001301128) Human Tagged ORF Clone

Product data:

Product Type:	Expression Plasmids
Product Name:	AIP1 (MAGI2) (NM_001301128) Human Tagged ORF Clone
Tag:	Myc-DDK
Symbol:	MAGI2
Synonyms:	ACVRIP1; AIP-1; AIP1; ARIP1; MAGI-2; NPHS15; SSCAM
Vector:	pCMV6-Entry (PS100001)
E. coli Selection:	Kanamycin (25 ug/mL)
Cell Selection:	Neomycin
ORF Nucleotide Sequence:	>RC240148 representing NM_001301128 Red=Cloning site Blue=ORF Green=Tags(s)

TTTGTGAATACGACTCACTATAGGGCGGCCGGAATTCGTCGACTGGATCCGGTACCGAGGAGATCTGCC
GCC**CGATCGC**

ATGTCCAAAGCTTGAAAAAGAAAGCCACTGGACTAGCAAAGTCCATGAGAGTGTCATTGGCAGGAACC
CGGAGGGCCAGCTGGGCTTTGAAGTGAAGGGGGCGCCGAGAATGGACAGTTCCTACCTGGGGGAGGT
GAAGCCCGGCAAGGTGGCTATGAGAGCGGCAGCAAATTTGGTGTGCGAGGAGCTGCTGCTGGAGGTGAAC
GAGACCCCGTGGCGGGGCTCACCATCAGGGACGTGCTGGCCGTGATCAAACACTGCAAGGACCCCTCC
GGCTCAAGTGTGTCAAGCAAGGAGGAATTGTTGATAAAGACCTTCGTCACCTCAACTTACGATTTCA
AAAGGGTTCTGTGGACCATGAGCTTCAGCAATCATTCTGTGACAACTCTACCTCCGCACGGTGCCATGC
ACCACAAGGCCACATAAGGAGGGTGAGGTCCCTGGAGTGGATTATATTTTCATCACTGTTGAAGATTTTA
TGGAAATTGGAGAAAAGTGGTCTCTCCTAGAAAGTGGGACTTATGAAGACAATTACTACGGTACCCCAA
GCCGCCAGCAGAACAGCACCATTATTGTTAAATGTAACAGACCAGATACTTCCAGGAGCCACTCCAAGT
GCTGAAGGAAAACGGAAGAGGAATAAATCAGTGAGCAACATGGAGAAAGCCAGTATAGAGCCTCCTGAGG
AGGAAGAGGAAGAGAGGCCTGTGGTCAATGGAAATGGAGTAGTAACACCAGAATCCAGTGAACATGA
AGACAAAAGTGCAGGTGCCTCAGGGGAGATGCCCTCCAGCCTTATCCTGCACCAAGTGTACAGTCAGCCT
GAGGAGCTGAAGGAGCAGATGGATGACACAAAGCCAATAAACCTGAAGACAATGAGGAACAGACCCAT
TGCCTGATAACTGGGAAATGGCCTATACAGAGAAGGGCGAAGTCTACTTCATTGACCATAACACAAAGAC
AACATCATGGCTGGATCCAGACTTGCAGAAAAGGCTAAACCTCCAGAAGAGTGCAAGAAAAATGAGCTT
CCATATGGCTGGGAAAAATCGATATCCCATTTATGGCACTTATTATGTTGACCACATAAATAGAAGAA
CACAGTTTGAAAATCCTGCTCCTGGAAGCAAAAAGGAGCTACAGCAACATAACATGCCCCACACAGAACT
TGAACAAAGCCCTGCAGGCCCCAGGTTTCCGAGAAAAACCACTCTCACCCGGGATGCATCCAGTTG
AAGGGAACATTCTCAGCACCACCTAAAAAGAGCAACATGGGCTTTGGATTTACCATCATTGGTGGAG
ACGAGCCTGATGAGTTTCTGCAGGTGAAAAGTGTGATTCCGGATGGGCCTGCAGCACAGGATGAAAAAT
GGAAACAGGTGATGTCATTGTCTATATTAATGAAGTTTGTGCTCTGGACACACTCATGCAGATGTTGTC
AACTTTTCCAGTCTGTTCTATTGGTCAGAGTGTCAACCTGGTGTGTGTCGTGGCTACCTTTGCCCT



[View online »](#)

TTGATCCTGAAGACCCTGCTAACAGCATGGTGCCACCCCTTGCAATAATGGAGAGGCCACCTCCAGTGAT
 GGTCAATGGAAGACACAATATGAAACATATTTGGAGTACATTTCTCGGACCTCAGAGTCAGTTCCAGAT
 ATAACAGATCGGCCGCCTCATTCTGCACTCCATGCCAACTGATGGTCAGCTAGACGGCACGTATCCAC
 CGCCCGTCCATGATGACAATGTGTCTATGGCTTCATCTGGGGCCACCCAAGCTGAACTTATGACCTTAAC
 CATTGTGAAAGGTGCCAGGGCTTCGGCTTCACTATTGCCGACAGTCCTACAGGACAGCGGGTGAACAA
 ATACTTGACATTACGGGATGCCCTGGCTGTGTGAAGGCGACCTCATTGTTGAGATCAACCAGCAGAATG
 TACAGAACCTGAGCCATACAGAAAGTAGTGATATACTTAAGGACTGTCCATTGGAAGTAAAACCTTTT
 GATTATCCATCGAGGAGGTTTCTTTTCTCCATGGAAAACCTCAAAGCCTATAATGGACCGATGGGAGAAT
 CAAGGCAGTCCTCAAACGAGTTTATCTGCTCCGGCCATACCGCAGAACCTGCCCTTCCCACCTGCCCTTC
 ACAGGAGCTCCTTTCTGACTCAACAGAGGCTTTGACCCACGGAAGCCTGATCCATATGAGCTCTACGA
 GAAATCTAGGGCATTATGAAAGTAGGCGTCCAGATTATAAGGAATTGGATGTTTCATCTTCGGAGGATG
 GAGTCTGGATTGGCTTCAGAATCCTCGGGGAGATGAGCCTGGACAGCCTATTTTGATTGGAGCTGTCA
 TTGCCATGGGCTCAGCCGACAGAGATGGCCGCTTCAACCAGGAGATGAGCTTGATGTTGATGGGAT
 TCCAGTAGCCGGCAAAACCCACCGCTATGTCATCGACCTCATGCACCACGAGCCGCAATGGGCAGGTC
 AACCTCACTGTGAGAAGAAAGGTGCTATGTGGAGGGGAGCCCTGCCAGAGAACGGGAGAAGTCCAGGCT
 CTGTATCCACCCACCACAGCTCTCCACGAGTGACTACGCAACCTACACCAACAGCAACCCAGCTGCCCC
 CAGTAGCAATGCCTCTCCCCCTGAAGGCTTCGCCTCCACAGCCTGCAGACCACTGATGTGGTCATTAC
 CGCAAAGAGAATGAGGGCTTCGGCTTTGTTCATCATCAGCTCCCTGAACAGGCCTGAGTCTGGATCCACTA
 TAACTGTGCCCCATAAAATCGGACGCATCATTGATGGGAGTCTCGAGATCGCTGTGAAAACTAAAAGT
 GGGAGACCGGATCCTAGCAGTGAATGGCCAGTCTATCATCAACATGCCTCACGCTGACATCGTGAAGCTC
 ATCAAGGATGCAGGTCTTAGTGTACCCCTTCGCATCATTCTCAGGAGGAGCTCAACAGCCCCACCTCGG
 CACCCAGCTCAGAGAAGCAGAGTCCCATGGCGCAGCAGAGTCCCTGGCAGCAGAGTCCCTTGCCCCA
 GCCAAGCCAGCCACCCCAACAGCCCCATGCCAGCCAGCACCACCTCAACCCTTCACTGCAAGGA
 CACGAAAATAGTTACAGGTGGAAGTGAAAGCAAGGCAAGATGTGAAACCAGACATCCGACAGCCTCCAT
 TCACAGACTACAGGCAGCCCCGCTGGATTACAGGCAACCCCCAGGAGGGGACTACCAGCAGCCCCACC
 CTTGGACTACAGGCAGCCTCCCCTACTGGACTACAGGCAGCACTCCCCGACACCAGGCAGTACCCTCTG
 TCGGACTACAGACAACCCAGGATTTTGATTATTTCACTGTGGACATGGAGAAAGGAGCCAAAGGATTTG
 GATTTCAGATTCTGTGGAGGAAGGAATACAAAATGGATTTGTATGTGTTGAGACTGGCAGAAGATGGACC
 AGCAATAAGGAATGGGAGGATGAGGGTAGGAGATCAAATCATTGAAATCAATGGGAAAGCACAAAGGAC
 ATGACACATGCCAGAGCAATAGAACTCATCAAATCTGGAGGAAGACGAGTGAGGCTGCTGCTCAAGAGAG
 GCACGGGACAGGTCCAGAATATGACGAACCCGCCCCCTGGAGTTCTCCGCTGCCGCCGCCAGGTCT
 GCCGGAAGTAGGCGTCTCCCTGGACGACGGCCTCGCTCCATTCTCTCCATCACATCCAGCCCCACCTCC
 GACCTTCCCACAGATAAGCCCAGGCCAACTTGGGATATCAAACGGGAACACGACGTTAGGAAACCAA
 AGGAGCTTTCAGCCTGCGGCCAGAAGAAGCAGCGCCTCGGGGAGCAGAGGGAGCGCTCGGCGAGTCCGCA
 GAGGGCCGCGCGCCGAGGCTCGAGGAGGCGCCCGGCGGCCAGGGGCGGCCCGAGGCCGGCAGGCCCGCC
 TCGGAGGCCAGGGCGCCCGGCTCGCGGCGGCAGACGCGGCGGACGCGGCGGGCGGGCGGGGAAGGAGG
 CGCCCCGTGCGGCGGCGGCTCCGAGCTCTGCCGCGCGAAGGCCGGGGCTGCGCCGGCGTTCGCCG
 CCGGGCGGCGGCGGCGAGCGGCGCGCTGGAGGCCGAGGCGAGGGCGGGTGCAGCGCGGGTCCCCGGCG
 GGCCCGGACCCCGGGGGCGCCCCGGCGCGCAAGGCCGCCGTGCGCCGGGGCCCTGGAAGGTGCCGG
 GTTCTGACAAGCTGCCAGCGTCTCAAACCGGCGCTCGGCCGCCAGCAGA

ACGCGTACGCGGCGCTCGAGCAGAACTCATCTCAGAAGAGGATCTGGCAGCAATGATATCCTGGATT
 ACAAGGATGACGACGATAAGGTTTAA

Protein Sequence:

>RC240148 representing NM_001301128

Red=Cloning site Green=Tags(s)

MSKSLKKKSHWTSKVHESVIGRNPQGLFELKGAENGQFPYLGEVKPGKVAYESGSKLVSEELLLEVN
ETPVAGLTIRDVLAVIKHKCDPLRLCKVKQGGIVDKDLRHYLNLRFKQGSVDHELQQIIRDNLYLRTVPC
TTPRHKEGEVPGVDYIFITVEDFMELEKSGALLESGETYEDNYYGTPKPPAEPAPLLLNVTDQILPGATPS
AEGKRKRKNSVSNMEKASIEPPEEEEEERPVVNGNGVVVTPSESEHEDKSAGASGEMPSQPYAPVYSQP
EELKEQMDDTKPTKPEDNEEDPLPDNWMAYTEKGEVYFIDHNTKTTSWLDPLRAKKAKPPEECKENEL
PYGWEKIDDPYIGTYYYVDHINRRTQFENPVLEAKRKLQQHNPHTELGTKPLQAPGFREKPLFTRDASQL
KGTFLSTTLKKSNMGGFTIIGGDEPDEFLQVKSVIPDGPAAQDGKMETGDVIVYINEVCVLGHTHADVV
KLFQSVPIGQSVNLVLCRGYLPFPDPEDPANSVMVPLAIMERPPVMVNGRHNYYETLEYISRTSQSVPD
ILDRPHSLHSMPTDGLDGTYPVVHDDNVSMASSGTAQELMTTLIVKGAQGGFTYIADSPQGRVKQ
ITDIPQCGPCLCEGLDIVEINQQNVNLSHTEVVDILKDCPIGSETSLIHRGGFFSPWKTPKPIMDRWEN
QGSPQTSLSAPAIPQNLFPFPAALHRSFSFPDSTEAFDPRKPDYELYEKSRAIYESRRPDYKELDVHLRRM
ESGFGFRILGGDEPGQPILIGAVIAMGSADRDGRLHPGDEL VYVDGIPVAGKTHRYVIDLMHHAARNGQV
NLTVRRKVL CGGEPCPENGRSPGSVSTHHSSPRSDYATYTSNHAAPSSNASPEGFASHLSQTSDDVIH
RKENEGFGFVIISSLNRPESGSTITVPHKIGRIIDGSPADRCALKVGDRLAVNGQSIINMPHADIVKL
IKDAGLSVTLRIIPQEELNSPTSPASSEKQSPMAQQSPLAQQSPLAQSPATPNSPIAQAPPQPLQLQG
HENSYSRSEVKARQDVKPDIRQPPTDYRQPPLDYRQPPGGDYQQPPPLDYRQPPLDYRQHSPDTRQYPL
SDYRQPQDFDYFTVDMEKGAKGFGFSIRGGREYKMDLYVRLAEDGPAIRNGMRVGDQIIIEINGESTRD
MTHARAIELIKSGGRRVRLLLKRGTGQVPEYDEPAWSSPAAAAAGLPEVGVSLLDGLAPFSPSHPAPPS
DPSHQISPGBTWDIKREHDVVRKPEL SACCQKKQLRGEQRERSASPQRAARPRLEEAPGGQGRPEAGRPA
SEARAPALAAADAADAARAGDGAPRAAAGSEL CRREGPGGAAPAFAGPGGGGSGALEAERAGARAGPRP
GPRPPGGAPARKAAAVAPGWKVPYGSCLKLSVLKPGASASR

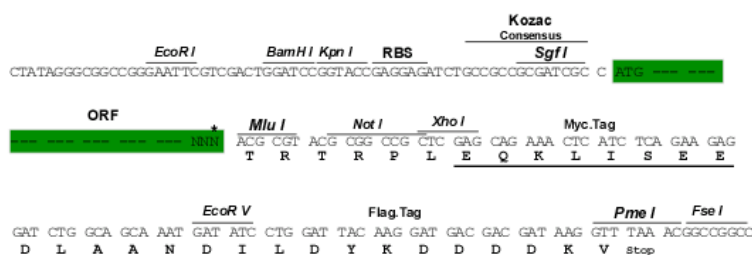
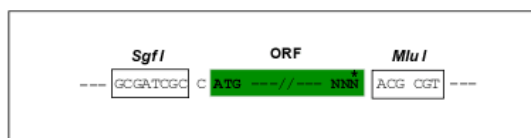
TRTRPLEOKLISEEDLAANDILDYKDDDDKV

Restriction Sites:

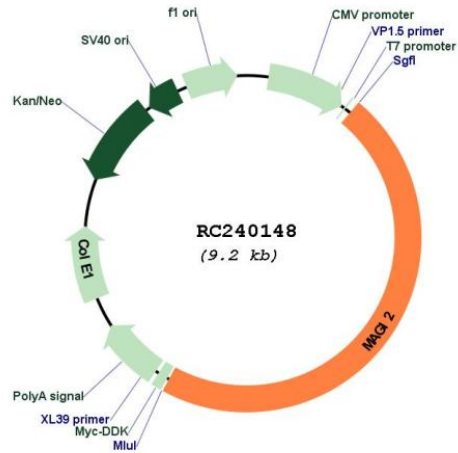
Sgfl-MluI

Cloning Scheme:

Cloning sites used for ORF Shuttling:



* The last codon before the Stop codon of the ORF

Plasmid Map:


ACCN: NM_001301128

ORF Size: 4323 bp

OTI Disclaimer: The molecular sequence of this clone aligns with the gene accession number as a point of reference only. However, individual transcript sequences of the same gene can differ through naturally occurring variations (e.g. polymorphisms), each with its own valid existence. This clone is substantially in agreement with the reference, but a complete review of all prevailing variants is recommended prior to use. [More info](#)

OTI Annotation: This clone was engineered to express the complete ORF with an expression tag. Expression varies depending on the nature of the gene.

Components: The ORF clone is ion-exchange column purified and shipped in a 2D barcoded Matrix tube containing 10ug of transfection-ready, dried plasmid DNA (reconstitute with 100 ul of water).

Reconstitution Method:

1. Centrifuge at 5,000xg for 5min.
2. Carefully open the tube and add 100ul of sterile water to dissolve the DNA.
3. Close the tube and incubate for 10 minutes at room temperature.
4. Briefly vortex the tube and then do a quick spin (less than 5000xg) to concentrate the liquid at the bottom.
5. Store the suspended plasmid at -20°C. The DNA is stable for at least one year from date of shipping when stored at -20°C.

RefSeq: [NM_001301128.2](#)

RefSeq Size: 6845 bp

RefSeq ORF: 4326 bp

Locus ID: 9863

UniProt ID: [Q86UL8](#)

Cytogenetics: 7q21.11

Protein Families: Druggable Genome

Protein Pathways: Tight junction

MW: 157.7 kDa

Gene Summary: The protein encoded by this gene interacts with atrophin-1. Atrophin-1 contains a polyglutamine repeat, expansion of which is responsible for dentatorubral and pallidoluysian atrophy. This encoded protein is characterized by two WW domains, a guanylate kinase-like domain, and multiple PDZ domains. It has structural similarity to the membrane-associated guanylate kinase homologue (MAGUK) family. [provided by RefSeq, Jul 2008]