

## Product datasheet for **RC240146**

### PTP kappa (PTPRK) (NM\_001291984) Human Tagged ORF Clone

#### Product data:

Product Type:	Expression Plasmids
Product Name:	PTP kappa (PTPRK) (NM_001291984) Human Tagged ORF Clone
Tag:	Myc-DDK
Symbol:	PTPRK
Synonyms:	R-PTP-kappa
Vector:	pCMV6-Entry (PS100001)
E. coli Selection:	Kanamycin (25 ug/mL)
Cell Selection:	Neomycin
ORF Nucleotide Sequence:	>RC240146 representing NM_001291984 Red=Cloning site Blue=ORF Green=Tags(s)

TTTTGTAATACGACTCACTATAGGGCGGCCGGGAATTCGTCGACTGGATCCGGTACCGAGGAGATCTGCC  
GCC**GCGATCGC**C

ATGGATACGACTGCGGCGGGCGCTGCCTGCTTTTGTGGCGCTCTTGCTCCTCTCCTTGGCCTCTCC  
TGGGATCGGCCAAGGCCAGTTCTCCGAGGTGGCTGTACTTTTGTATGATGGTCCAGGGGCTGTGATTA  
CCACCAGGATCTGTATGATGACTTTGAATGGGTGCATGTTAGTGTCAAGAGCCTCATTATCTACCACCC  
GAGATGCCCAAGGTTCTATATGATAGTGGACTCTTCAGATCAGACCCTGGAGAAAAAGCCAGACTTC  
AGCTGCCTACAATGAAGGAGAACGACACTCACTGCATTGATTTAGTTACCTATTATATAGCCAGAAAGG  
ACTGAATCCTGGCACTTTGAACATATTAGTTAGGGTGAATAAAGGACCTCTTGCCAAATCAATTTGGAAT  
GTGACTGGATTCACGGGTAGAGATTGGCTTCGGGCTGAGCTAGCAGTGAGCACCTTTTGGCCAAATGAAT  
ATCAGGTAATATTTGAAGCTGAAGTCTCAGGAGGGAGAAGTGGTTATATTGCCATTGATGACATCCAAGT  
ACTGAGTTATCCTTGTGATAAATCTCCTCATTTCCTCCGTCTAGGGGATGTAGAGGTGAATGCAGGGCAA  
AACGCTACATTTCAAGTGCATTGCCACAGGGAGAGATGCTGTGCATAACAAGTTATGGCTCCAGAGACGAA  
ATGGAGAAGATATACCAGTAGCCAGACTAAGAACATCAATCATAGAAGGTTTGGCCGCTTCCTTCAGATT  
GCAAGAAGTGACAAAACTGACCAGGATTTGTATCGCTGTGTAACCTCAGTCAGAACGAGGTTCCGGTGTG  
TCCAATTTTGTCAACTTATTGTGAGAGAACCGCCAAGACCCATTGCTCCTCCTCAGCTTCTTGGTGTG  
GGCCTACATATTTGCTGATCCAATAAATGCCAACTCGATCATTGGCGATGGTCTATCATCCTGAAAGA  
AGTAGAGTACCGAATGACATCAGGATCCTGGACAGAAACCCATGCAGTCAATGCTCCAATTACAAATTA  
TGGCATTAGATCCAGATACCGAATATGAGATCCGAGTTCTACTTACAAGACCTGGTGAAGGTGGAACGG  
GGCTCCAGGACCTCCACTAATCACCAGAACAAAATGTGCAGAACCTATGAGAACCCAAAGACATTA  
GATTGCTGAAATACAGGCAAGACGGATTGCTGTGGACTGGGAATCCTTGGTTACAACATTACCGGTTGC  
CACACTTTAATGCTCACTATCTGCTACCATTACTTCCGTGGTCAACAGAGCAAGGCAGACTGTTTGG  
ACATGGACCCAAAGCCCTCAGCATGTTGTGAACCATCTGCCACCTTATACAAATGTCAGCCTCAAGAT  
GATCCTAACCAATCCAGAGGGAAGGAAGGAGAGTGAAGAGACAATTATTCAAACTGATGAAGATGTGCC  
GGTCCCGTACCAGTAAAATCTCTTCAAGGAACATCCTTTGAAAATAAGATCTTCTTGAAGTGGAAAGAAC



[View online >](#)

CTTTGGATCCAAATGGAATCATCACTCAATATGAGATCAGCTATAGCAGTATAAGATCATTGGATCCTGC  
AGTTCCAGTGGCTGGACCTCCCCAGACTGTATCAAATTTATGGAACAGTACACCCATGTCTTTATGCAT  
CTCCACCCTGGAACCAGTACCAGTTTTTCATAAGAGCCAGCACGGTCAAAGGCTTTGGTCCAGCCACAG  
CCATCAATGTCACCACCAATATCTCAGCTCCAACCTTTACCTGACTATGAAGGAGTTGATGCCTCTCTCAA  
TGAAACTGCCACCACAATAACTGTATTGTTGAGACCAGCACAAAGCAAGGCTCCTATCAGTGCTTAT  
CAGATTGTTGTGAAGAACTGCACCCACACCCGAACCAAGAGAGAAGCCGGAGCCATGGAATGCTACCAGG  
TTCTGTGCACATACCAAAATGCCATGAGTGGGGTGCACCGTATTACTTTGCTGCAGAACTCCCCCGGG  
AAACCTACCTGAGCCTGCCCGTTCACCTGTGGGTGACAATCGGACCTACCAAGGCTTTTGGAAACCTCCT  
TTGGCTCCGCGCAAAGGATACAACATCTATTTCCAGGCGATGAGCAGTGTGGAGAAGGAAACTAAAAACC  
AGTGCCTACGCATTGCTACAAAAGCAGCAACAGAAGAACCAGAAGTATCCCAGATCCCAGCAAGCAGAC  
AGACAGAGTGGTAAAAAGCAGGAATTAGTGTGGAATTTGGTGTTCATCCTCCTCTCTAGTTGTC  
ATATTAATTGTAAAAAGAGCAAACCTGCTAAAAACGCAAGATGCCATGGGAATACCCGGCAGGAGA  
TGACTCACATGGTGAATGCAATGGATCGAAGTTATGCTGATCAGAGCACTCTGCATGCAGAAGATCCTCT  
TTCCATCACCTTCATGGACCAACATAACTTTAGTCCAAGATATGAGAACCACAGTGTACAGCAGAGTCC  
AGTCGCCTTCTAGACGTACCTCGCTACCTCTGTGAGGGGACGGAATCCCCTTACCAGACAGGACAGCTGC  
ATCCAGCCATCAGGGTAGCTGATTTACTGCAGCACATTAATCTCATGAAGACATCAGACAGCTATGGGTT  
CAAAGAGGAATATGAGAGCTTTTTTGAAGGACAGTCAAGTCTTTGGGATGAGTAAAAAAGATCAAAT  
AGAGCAAAAAACCGATATGGAACATTATAGCATATGATCACTCCAGAGTATTTTGAACCCGAGAGG  
ATGATCCTTCCCTCAGATTATATTAATGCCAACTATATTGATGGCTACCAGAGACCAAGTCATTACATTGC  
AACCAAGGTCCTTCAATGAAACAGTGTATGATTTCTGGAGGATGATTTGGCAAGAACAATCTGCTTGC  
ATTGTGATGGTTACAAATTTAGTTGAGGTTGGCCGGTTAAATGCTATAAATATTGGCCTGATGATACTG  
AAGTTTATGGTGACTTCAAAGTAACGTGTGAGAAATGGAACCACTTGTGAATATGTAGTTAGGACATT  
CACCTGGAAAGGAGGGGTACAATGAAATCCGTGAAGTTAAACAGTTCATTTACGGGCTGGCCTGAC  
CATGGAGTGCCTACCATGCTACAGGGCTGCTTTCCCTTATCCGGCGAGTCAAGTTATCAAACCCCTCCA  
GTGCTGGCCCCATCGTTGTACATTGCAGTGTGGTGTGGACGAACCTGGCTGCTACATTGTGATTGACAT  
CATGCTAGACATGGTGAAGAGAGGGTGTGTTGATATTTACAATTGTGTCAAAGCCTTAAGATCTCGG  
CGTATTAATATGGTCCAGACAGAGGAACAGTACATTTTTTATTCATGATGCCATTTTAGAAGCCTGCTTAT  
GTGGAGAACTGCCATACCTGTCTGTGAATTTAAAGCTGCATATTTTATGATGATTAGAATAGACTCCCA  
GACTAACTCTTACATCTCAAGGATGAATTTAGACTCTGAATTCAGTCAACCCCTCGACTACAAGCTGAA  
GACTGCAGTATAGCGTGCCTGCCAAGGAACCATGACAAGAACCCTTTCATGGACATGCTGCCACCTGACA  
GATGTCTGCCTTTTTTAATTACAATTGATGGGGAGAGCAGTAACATCAATGTGCTCTTATGGACAG  
CTACAGGCAACCAGCTGCTTTCATCGTACACAATACCCTCTGCCAAACACTGTAAAAGACTTCTGGAGA  
TTAGTGTATGATTATGGCTGTACCTCCATTGTGATGTTAAACGAAGTCGACTTGTCCCAGGGCTGCCTC  
AGTACTGGCCAGAGGAAGGGATGCTACGATATGGCCCCATCCAAGTGGAAATGATGTCTTGTTCATGGA  
CTGTGATGTGATCAACCGGATTTTTAGGATATGCAATCTAACAAGACCACAGGAAGGTTATCTGATGGTG  
CAACAGTTTCAGTACCTAGGATGGGCTTCTCATCGAGAAGTGCCTGGATCCAAAAGGTCATTCTTGAAC  
TGATACTTCAGGTGAAAAGTGGCAGGAGGAATGCGAGGAAGGGGAAGCCGGACGATTATCCACTGCCT  
AAATGGTGGCGGGCAAGTGGCATGTTCTGTGCTATAGGCATCGTTGTTGAAATGGTAAAACGGCAAAAT  
GTTGTGATGTTTTCCATGCAGTAAAGACACTGAGGAACAGCAAGCCAAACATGGTGAAGCCCCGGAGC  
AATACCGTTTTGCTATGATGTAGCTTTGGAGTACCTGGAATCATCT

AGCGGACCGACGCGTACGCGCCGCTCGAGCAGAACTCATCTCAGAAGAGGATCTGGCAGCAAATGATATCC  
TGGATTACAAGGATGACGACGATAAGGTTTAA

Protein Sequence: >RC240146 representing NM\_001291984  
 Red=Cloning site Green=Tags(s)

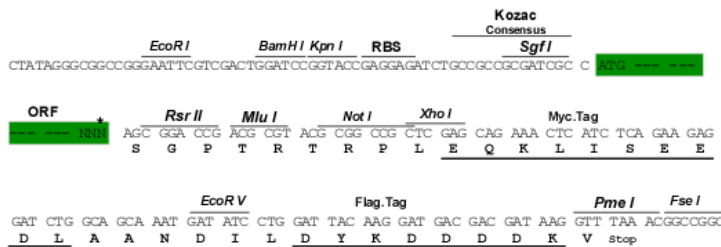
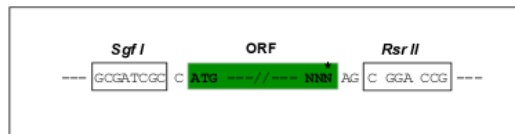
MDTTAAALPAFVALLLLSPWLLGSAQGQFSAGGCTFDDGPGACDYHQDLYDDFEWVHVS AQEPHYLPP  
 EMPQGSYMIVDSSDHPG EKARLQLPTMKENDTHCIDFSYLLYSQKGLNPGLNLNLRVVKGPLANPIWN  
 VTGFTGRDWLRAELAVSTFWPNEYQVIFAEVSGGRSGYIAIDDIQVLSYPCDKSPHFLRLGDVEVNAGV  
 NATFQCIATGRDAVHNKLWLQRRNGEDIPVAQTKNINHRRFAASFRLQEVTKTDQDL YRCVTVQSERGSGV  
 SNFAQLIVREPPRIAPPQLLGVGPTYLLIQLNANSIIIGDGPIILKEVEYRMTSGSWTETHAVNAPTYKL  
 WHLDPDTEYEIRVLLTRPGEGGTGLPGPPLITRTKCAEPMRTPKTLKIAEIQARRIAVDWESLGNITRC  
 HTFNVTICYHYFRGHNESKADCLDMDPKAPQHVVNHLPPYTNVSLKMILTNPGRKESEETIIQTDEDVP  
 GPVPVKSLQGT SFENKIFLNWKEPLDPNGIITQYEISYSSIRSFDAVPVAGPPQTVSNLWNSTHHVFMH  
 LHPGTTYQFFIRASTVKFGFPATAINVTNISAPTL PDYEGVDASLNETATTITVLLRPAQAKGAPISAY  
 QIVVEELHPHRTKREAGAMECYQVPVTVQAMSSGGAPYYFAAELPPGNLPEPAPFTVGDNRVYQGFVWNP  
 LAPRKGYNIYFQAMSSVEKETKTQCVRIATKAATEEPEVIPDPAKQTD RRVVKIAGISAGILVFILLLLV  
 ILIVKSKLAKKRK DAMGNTRQEMTHMVNAMDRSYADQSTLHAEDPLSITFMDQHNSPRYENHSATAES  
 SRLLDVPRYLCEGTESPYQTGQLHPAIRVADLLQHINLMKTSDSYGFKEEYESFFEGQSASWDVAKKDQN  
 RAKNRYGNI IAYDHSRVLQPVEDDPSSDYINANYIDGYQRPSHYIATQGPVHETVYDFWRMIWQEQSAC  
 IVMVTNLVEVGRVKCYKYWPDDTEVYGFVKVTCVEMEPLAEYVVRTFTLERRGYNEIREVKQFHTGWPD  
 HGVPYHATGLLSFIRRVKLSNPPSAGPIVVHCSAGAGRTGCYIVIDIMLDM AEREGVVDIYNCVKALRSR  
 RINMVQTEEQYIFIHDAILEACLGETAIPVCFKAA YFDMIRIDSQTNSSHLKDEFQTLNSVTPRLQAE  
 DCSIACLPRNHDKNRFMDMLPPDRCLPFLITIDGESSNYINAALMDSYRQPAAFIVTQYPLPNTVKDFWR  
 LVYDYGCTSI VMLNEVDLSQGPCQYWPEEGLR YGPIQVECMSCSMDCDVINRIFRICNLTRPQEGYLMV  
 QQFYQLGWASHREVPGSKRSFLKILQVEKWQEECEEGERTIIHCLNGGGRSGMFC AIGIVVEMVKRQN  
 VVDVFHAVKTLRNSKPNMVEAPEQYRF CYDVALEYLESS

SGPTRTRPLEQKLI SEEDLAANDILDYKDDDDKV

Restriction Sites: SgfI-RsrII

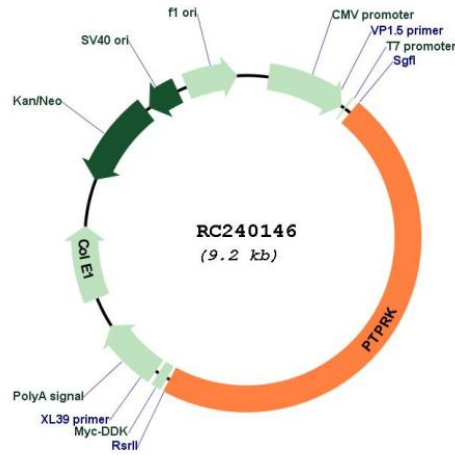
Cloning Scheme:

Cloning sites used for ORF Shuttling:



\* The last codon before the Stop codon of the ORF

Plasmid Map:



**ACCN:** NM\_001291984

**ORF Size:** 4317 bp

**OTI Disclaimer:** The molecular sequence of this clone aligns with the gene accession number as a point of reference only. However, individual transcript sequences of the same gene can differ through naturally occurring variations (e.g. polymorphisms), each with its own valid existence. This clone is substantially in agreement with the reference, but a complete review of all prevailing variants is recommended prior to use. [More info](#)

**OTI Annotation:** This clone was engineered to express the complete ORF with an expression tag. Expression varies depending on the nature of the gene.

**Components:** The ORF clone is ion-exchange column purified and shipped in a 2D barcoded Matrix tube containing 10ug of transfection-ready, dried plasmid DNA (reconstitute with 100 ul of water).

<b>Reconstitution Method:</b>	<ol style="list-style-type: none"><li>1. Centrifuge at 5,000xg for 5min.</li><li>2. Carefully open the tube and add 100ul of sterile water to dissolve the DNA.</li><li>3. Close the tube and incubate for 10 minutes at room temperature.</li><li>4. Briefly vortex the tube and then do a quick spin (less than 5000xg) to concentrate the liquid at the bottom.</li><li>5. Store the suspended plasmid at -20°C. The DNA is stable for at least one year from date of shipping when stored at -20°C.</li></ol>
<b>RefSeq:</b>	<a href="#">NM_001291984.2</a>
<b>RefSeq Size:</b>	6101 bp
<b>RefSeq ORF:</b>	4320 bp
<b>Locus ID:</b>	5796
<b>UniProt ID:</b>	<a href="#">Q15262</a>
<b>Cytogenetics:</b>	6q22.33
<b>Protein Families:</b>	Druggable Genome, Phosphatase, Transmembrane
<b>MW:</b>	162.6 kDa
<b>Gene Summary:</b>	<p>The protein encoded by this gene is a member of the protein tyrosine phosphatase (PTP) family. PTPs are known to be signaling molecules that regulate a variety of cellular processes including cell growth, differentiation, mitotic cycle, and oncogenic transformation. This PTP possesses an extracellular region, a single transmembrane region, and two tandem catalytic domains, and thus represents a receptor-type PTP. The extracellular region contains a meprin-A5 antigen-PTP mu (MAM) domain, an Ig-like domain and four fibronectin type III-like repeats. This PTP was shown to mediate homophilic intercellular interaction, possibly through the interaction with beta- and gamma-catenin at adherens junctions. Expression of this gene was found to be stimulated by TGF-beta 1, which may be important for the inhibition of keratinocyte proliferation. [provided by RefSeq, Jul 2008]</p>