

## Product datasheet for **RC240140**

### DAP Kinase 1 (DAPK1) (NM\_001288730) Human Tagged ORF Clone

#### Product data:

Product Type:	Expression Plasmids
Product Name:	DAP Kinase 1 (DAPK1) (NM_001288730) Human Tagged ORF Clone
Tag:	Myc-DDK
Symbol:	DAPK1
Synonyms:	DAPK; ROCO3
Vector:	pCMV6-Entry (PS100001)
E. coli Selection:	Kanamycin (25 ug/mL)
Cell Selection:	Neomycin
ORF Nucleotide Sequence:	>RC240140 representing NM_001288730 Red=Cloning site Blue=ORF Green=Tags(s)

TTTTGTAATACGACTCACTATAGGGCGGCCGGAATTCGTCGACTGGATCCGGTACCGAGGAGATCTGCC  
GCC**CGGATCGCC**

ATGACCGTGTTCAGGCAGGAAAACGTGGATGATTACTACGACACCGGCGAGGAAC TTGGCAGTGGACAGT  
TTGCGGTTGTGAAGAAATGCCGTGAGAAAAGCACCGCCTCCAGTATGCCGCAAATTCATCAAGAAAAG  
GAGGACTAAGTCCAGCCGGCGGGTGTGAGCCGCGAGGACATCGAGCGGAGGTCAGCATCCTGAAGGAG  
ATCCAGCACCCCAATGTCATCACCTGCACGAGGTCTATGAGAACAAGACGGACGTCATCCTGATCTTGG  
AACTCGTTGCAGGTGGCGAGCTGTTGACTTCTTAGCTGAAAAGGAATCTTAACTGAAGAGGAAGCAAC  
TGAATTTCTCAAACAAATTCCTAATGGTGTACTACCTGCACCTCCCTCAAATCGCCCACTTTGATCTT  
AAGCCTGAGAACAATAATGCTTTTGGATAGAAAATGTCCCAAACTCGGATCAAGATCATTGACTTTGGGT  
TGGCCATAAAATTGACTTTGAAATGAATTTAAAACATATTTGGGACTCCAGAGTTTGTGCCTCCTGA  
GATAGTCAACTATGAACCTCTTGGTCTTGAGGCAGATATGTGGAGTATCGGGTAATAACCTATATCCTC  
CTAAGTGGGGCCTCCCATTTCTTGAGACACTAAGCAAGAAACGTTAGCAAATGTATCCGCTGTCAACT  
ACGAATTTGAGGATGAATACTTCAGTAATACCAGTGCCCTAGCCAAAGATTTTCAAGAAGACTCTGGT  
CAAGGATCCAAAGAAGAGAAATGACAATTCAGATAGTTTGCAGCATCCCTGGATCAAGCCTAAAGATACA  
CAACAGGCACTTAGTAGAAAAGCATCAGCAGTAAACATGGAGAAAATCAAGAAGTTTGCAGCCCGAAAA  
AATGGAACAATCCGTTTCGCTTGATATCACTGTGCCAAAGATTATCCAGGTCATTCTGTCCAGAAGTAA  
CATGAGTGTGCCAGAAGCGATGATACTCTGGATGAGGAAGACTCCTTTGTGATGAAAGCCATCATCCAT  
GCCATCAACGATGACAATGTCCAGGCCTGCAGCACCTTCTGGGCTCATTATCCAACATGATGTTAACC  
AACCAACAAGCACGGGACCTCCATTACTCATTGCTGCTGGCTGTGGGAATTTCAAATACTACAGTT  
GCTCATTAAAAGAGGCTCGAGAATCGATGTCCAGGATAAGGGCGGGTCCAATGCCGCTACTGGGCTGCT  
CGGCATGGCCACGTCGATACCTTGAATTTCTCAGTGAGAACAATGCCCTTTGGATGTGAAAGACAAGT  
CTGGAGAGATGGCCCTCCACGTGGCAGCTCGCTATGGCCATGCTGACGTGGCTCAGTTACTGTGCAGCTT  
CGGCTCAAATCCAATATCCAGGACAAGGAAGAAGAAACCCCTTGCACCTGTGCTGCTTGGCACGGCTAT  
TACTCTGTGGCAAGCCCTTTGTGAAGCCGGCTGTAACGTGAACATCAAGAACCAGAGGAGAGACGC



[View online >](#)

CCCTCCTGACAGCCTCTGCCAGGGGCTACCACGACATCGTGGAGTGTCTGGCCGAACATGGAGCCGACCT  
TAATGCTTGCACAAGGACGGACACATTGCCCTTCATCTGGCTGTAAGACGGTGTGAGTGGAGGTAATC  
AAGACTCTCCTCAGCCAAGGGTGTTCGTGATTATCAAGACAGGCACGGCAATACTCCCCTCCATGTGG  
CATGTAAGATGGCAACATGCCTATCGTGGTGGCCCTCTGTGAAGCAAAGTCAATTTGGACATCTCAA  
CAAGTATGGGCGAACGCCTCTGCACCTTGGCCCAACAACGGAATCTAGACGTGGTCCGGTATCTCTGT  
CTGATGGGAGCCAGCGTTGAGGCGCTGACCACGGACGGAAGACGGCAGAAGATCTTGTAGATCGGAAC  
AGCACGAGCAGTACGAGGTCTCCTTGAAGACTTCGAAAGGATACGCACCGAGGACTCTCATCCAGCA  
GCTCCGACCCACACAGAACCTGCAGCCAAGAATTAAGCTCAAGCTGTTTGGCCACTCGGGATCCGGGAAA  
ACCACCCTGTAGAATCTCTCAAGTGTGGGCTGCTGAGGAGCTTTTTTCAAGGGCTCGGCCAGACTGT  
CTTCCACCAACTCCAGCAGGTTCCACCTTCAACCCTGGCTTCTAAGCCACAGTCTCAGTGTGAGCATCAA  
CAACCTGTACCCAGGCTGCGAGAACGTGAGTGTGAGGAGCCGAGCATGATGTTGAGCCGGGCTTACC  
AAAGGGATGCTGGAGGTGTTTGTGGCCCGACCCACCACCCGACTGCTCGGCCGATGACCAGTCCACCA  
AGGCCATCGACATCCAGAACGCTTATTTGAATGGAGTTGGCGATTTAGCGTGTGGGAGTCTCTGGAAA  
TCCTGTGATTTCTGCTTATGACTATTTTGTGCAAAATGATCCACGTCATCCATGTTGTTGCTTT  
AGTCTAGAAGAGCCCTATGAGATCCAGTGAACCAAGTATTTTCTGGCTCAGTTTCTGAAGTCCCTTG  
TCCAGTTGAAGAACCATAGCCTTCGGTGGCAAGCTGAAGAACCCTCAAGTTGTCCTGGTGGCCAC  
CCACGCTGACATCATGAATGTTCTCGACCCGGCTGGAGGCGAGTTGGATATGACAAGACACATCGTTG  
CTGAAAGAGATTAGAACAGGTTTGAATGATCTTACATTTCAAATAAGCTGTTTGTCTGGATGCTG  
GGGCTTCTGGGTCAAAGGACATGAAGGTACTTCGAAATCATCTGCAAGAAATACGAAGCCAGATTGTTTC  
GGTCTGTCTCCCATGACTCACCTGTGTGAGAAAATCATCTCCACGCTGCCTTCTGGAGGAAGTCAAT  
GGACCAACCAGTGTGTCGCTGCAGCAGTTTGTGTACGACGTGCAGGACCAGTGAACCCCTGGCCA  
GCGAGGAGGACCTCAGGCGCATTGCTCAGCAGCTCCACAGCACAGGCGAGATCAACATCATGCAAAGTGA  
AACAGTTCAGGACGTGCTGCTCCTGGACCCCGCTGGCTCTGCACAAACGTCCTGGGGAAGTTGCTGTCC  
GTGGAGACCCACGGGCGCTGCACCACTACCGGGCCGCTACACCGTGGAGGACATCCAGCGCCTGGTGC  
CCGACAGCGACGTGGAGGAGCTGCTGCAGATCCTCGATGCCATGGACATCTGCGCCCGGACCTGAGCAG  
CGGGACCATGGTGGACGTCCCAGCCCTGATCAAGACAGACAACCTGCACCGCTCCTGGGCTGATGAGGAG  
GACGAGGTGATGGTGTATGGTGGCGTGCATCGTGCCCGTGGAAACCTCACCCCTTCCCATGTGGCA  
TCTTTCACAAGGTCCAGGTGAACCTGTGCCGTGGATCCACCAGCAAAGCACAGAGGGCGACGCGGACAT  
CCGCTGTGGGTGAATGGCTGCAAGCTGGCCAACCGTGGGCGGAGCTGCTGGTGTGCTGGTCAACCAC  
GGCCAGGGCATTGAGGTCCAGTCCGCGCCTGGAGACGGAGAAGATCAAGTGTGCTGCTGCTGGACT  
CGGTGTGCAGCACCATTGAGAACGTGATGGCCACCACGCTGCCAGGGCTCCTGACCGTGAAGCATTACCT  
GAGCCCCCAGCAGCTGCGGGAGCACCATGAGCCCGTATGATCTACCAGCCACGGGACTTCTCCGGGCA  
CAGACTCTGAAGGAAACCTCACTGACCAACACCATGGGGGGTACAAGGAAAGCTTCAGCAGCATCATGT  
GCTTCCGGTGTACGACGTCTACTCACAGGCCAGCCTCGGCATGGACATCCATGCATCAGACCTGAACCT  
CCTCACTCGGAGGAAACTGAGTCGCTGCTGGACCCGCCCCGACCCCTGGGGAAGGACTGGTGCCTTCTC  
GCCATGAACCTTAGGCCTCCCTGACCTCGTGGCAAAGTACAACACCAGTAACGGGGCTCCCAAGGATTTCC  
TCCCCAGCCCCCTCACGCCCTGCTGCGGGAATGGACCACCTACCTGAGAGCACAGTGGCACCCTCAT  
GTCCAAACTGAGGAGCTGGGTGCGCGGATGCCGAGACTTTTTGCTGAAGGCATCCTCTGTGTTCAA  
ATCAACCTGGATGGCAATGGCCAGGAGCCTATGCCTCGAGCTGCAACAGCGGCACCTTTACAATTCCA  
TTAGCTCTGTTGATCCCGG

ACGCGTACGCGGCCGCTCGAGCAGAACTCATCTCAGAAGAGGATCTGGCAGCAAATGATATCCTGGATT  
ACAAGGATGACGACGATAAGGTTTAA

Protein Sequence: >RC240140 representing NM\_001288730  
 Red=Cloning site Green=Tags(s)

```

MTVFRQENVDDYYDTGEELGSGQFAVVKKCREKSTGLQYAAKFIKKRRTKSSRRGVSREDIEREVSILKE
IQHPNVITLHEVYENKTDVILILELVAGGELDFLAEKESL TEEEA TEFLKQILNGVYYLHSLQIAHFDL
KPENIMLLDRNVPKPRIKIIDFGLA HKIDFGNEFKNIFGTPEFVAPEIVNYEPLGLEADMWSIGVITYIL
LSGASPF LGDTKQETLANVSAVNYEFED EYF SNTSALAKDFIRRLLVKDPKKRMTIQDSLQHPWIKPKLD
QQALSRKASAVNMEKFKKF AARKKWKQSVRLISLCQRLSRSF LRSNMSVARSDDTLDEEDSFVMKAIH
AINDDNV PGLQHLLGSLSNYDVNQPNKHGTPPLLIAAGCGNIQILQLLIKRGSRIDVQDKGGSNAVYWAA
RHGHVDLTKFLSENKCPLDVKDKSGEMALHVAARYGHADVAQLLCSFGSNPNIQDKEETPLHCAAWHG Y
YSVAKALCEAGCNVNIKNREGETPLL TASARGYHDIVECLAEHGADLNACDKDGHIALHLAVRRCQMEVI
KTL L SQGCFVDYQDRHGNTPLHVACKDGNM PIVVALCEANCLDISNKYGRTPHLAANNGILDVVR YLC
LMGASVEALT TDGKTAEDLARSEQHEHVAGLLARLRK DTHRGLFIQQLRPTQNLQPRIK LKLFHGSGSGK
TTLVESLKCGLLRSFFRRRRRPRLSSTNSSRFPPSPLASKPTVSVSINNL YPGCENVSVRSRSM MFEPGLT
KGMLEVFVAPTHHPHCSADDQSTKAIDIQNAYLNGV GDFSVW EFGSGNPVYFCYDYFAANDPTSIHVVVF
SLEEPYEIQLNQVIFWLSFLKSLVPVEEPIAFG GK LKNPLQVVLVATHADIMNVPRPAGGEFGYDKDTSL
LKEIRNRF GNDLHISNKL FVL D AGASGSKDMKVL RNHLQEIRSQIVSVCPPMTHLCEKIISTLPSWRKLN
GPNQLMSLQQFVYDVQDQLNPLASEEDLRRIAQQ LHSTGEINIMQSETVQDV LLLDPRWLCTNVLGKLLS
VETPRALHHYGRYTVEDIQRLVPDSV EELLQILDAMD ICARDLSSGTMVDVPALIKTDNLHRSWADEE
DEVVMYGGVRI VPVEHLTPFPCGIFHKVQVNL CRWIHQQSTEGDADIRLWVNGCKLANRGAELLVLLVNH
GGQIEVQVRGLETEKIKCCLLLDSVCSTIENVMAT TLPGLLTVKH YLSPQQLEHHEPVMIYQPRDFRA
QTLKETS LNTMTGGYKESFSSIMCFGCHDVYSQASL GMDIHASDLNLLTRRKL SRLLDPPDPLGKDWCLL
AMNLGLPDLVAKYNTSNGAPKDFLPSPLHALLREW TTYPESTVGLTMSK LRELGRRAADFLLKASSVFK
INLDGNGQEAYASSCNSGTSYNSISSV VSR
  
```

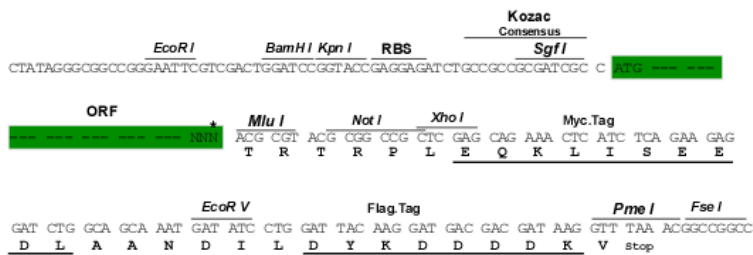
TRTRPLEQKLISEEDLAANDILDYKDDDDKV

Restriction Sites:

Sgfl-MluI

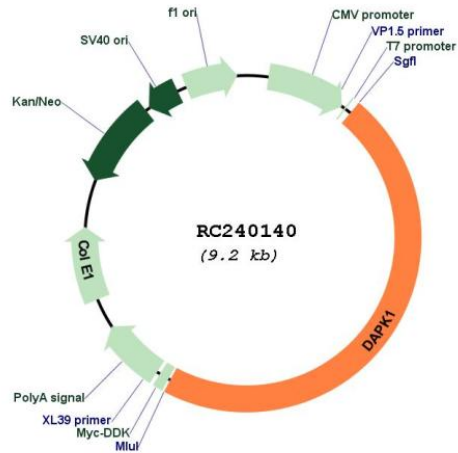
Cloning Scheme:

Cloning sites used for ORF Shuttling:



\* The last codon before the Stop codon of the ORF

## Plasmid Map:



**ACCN:** NM\_001288730

**ORF Size:** 4290 bp

**OTI Disclaimer:** The molecular sequence of this clone aligns with the gene accession number as a point of reference only. However, individual transcript sequences of the same gene can differ through naturally occurring variations (e.g. polymorphisms), each with its own valid existence. This clone is substantially in agreement with the reference, but a complete review of all prevailing variants is recommended prior to use. [More info](#)

**OTI Annotation:** This clone was engineered to express the complete ORF with an expression tag. Expression varies depending on the nature of the gene.

**Components:** The ORF clone is ion-exchange column purified and shipped in a 2D barcoded Matrix tube containing 10ug of transfection-ready, dried plasmid DNA (reconstitute with 100 ul of water).

**Reconstitution Method:**

1. Centrifuge at 5,000xg for 5min.
2. Carefully open the tube and add 100ul of sterile water to dissolve the DNA.
3. Close the tube and incubate for 10 minutes at room temperature.
4. Briefly vortex the tube and then do a quick spin (less than 5000xg) to concentrate the liquid at the bottom.
5. Store the suspended plasmid at -20°C. The DNA is stable for at least one year from date of shipping when stored at -20°C.

**RefSeq:** [NM\\_001288730.2](#)

**RefSeq Size:** 5777 bp

**RefSeq ORF:** 4293 bp

**Locus ID:** 1612

**UniProt ID:** [P53355](#)

**Cytogenetics:** 9q21.33

**Protein Families:** Druggable Genome, Protein Kinase

**Protein Pathways:** Bladder cancer, Pathways in cancer

**MW:** 160.5 kDa

**Gene Summary:** Death-associated protein kinase 1 is a positive mediator of gamma-interferon induced programmed cell death. DAPK1 encodes a structurally unique 160-kD calmodulin dependent serine-threonine kinase that carries 8 ankyrin repeats and 2 putative P-loop consensus sites. It is a tumor suppressor candidate. Alternative splicing results in multiple transcript variants. [provided by RefSeq, Dec 2013]