

## Product datasheet for **RC240128**

### **ROBO2 (NM\_001290039) Human Tagged ORF Clone**

#### Product data:

Product Type:	Expression Plasmids
Product Name:	ROBO2 (NM_001290039) Human Tagged ORF Clone
Tag:	Myc-DDK
Symbol:	ROBO2
Synonyms:	SAX3
Vector:	pCMV6-Entry (PS100001)
E. coli Selection:	Kanamycin (25 ug/mL)
Cell Selection:	Neomycin
ORF Nucleotide Sequence:	>RC240128 representing NM_001290039 Red=Cloning site Blue=ORF Green=Tags(s)

TTTTGTAATACGACTCACTATAGGGCGCCGGAATTCGTCGACTGGATCCGGTACCGAGGAGATCTGCC  
GCC**GCGATCGCC**

ATGAGTCTGCTGATGTTACACAACACTGCTCTGTGGATTTTTATATGTTCCGGTTGATGGATCGCGTC  
TTCGCCAGGAGGACTTTCCCGCGGATTGTGGAGCATCCTCCGATGTCATCGTCTAAGGGCGAGCC  
CAGCAGCTGAACTGCAAGGCGGAGGGCCGCCAACGCCACCATTGAGTGGTACAAAGATGGGGAGCGA  
GTGGAGACTGACAAGGACGATCCCGGTCCACAGGATGCTTCTGCCAGCGGATCCTATTCTTCTTGC  
GCATCGTGACCGGGCGCAGGAGTAAACCTGATGAAGGAAGCTACGTTTGTGTTGCGAGGAACTATCTTGG  
TGAAGCAGTGAGTCGAAATGCGTCTCTGGAAGTGGCATTGTTACGAGATGACTTCCGACAAAACCCACA  
GATGTTGTAGTGGCAGCTGGAGAGCCTGCAATCCTGGAGTGCCAGCCTCCCGGGGACACCCAGAACCCA  
CCATCTACTGGAAAAAGACAAAGTTCGAATTGATGACAAGGAAGAAAGAATAAGTATCCGTGGTGGAAA  
ACTGATGATCTCCAATACCAGGAAAAGTGTGACAGGGATGTATACTTGTGTTGGTACCAATATGGTGGGA  
GAAAGGGACAGTGACCCAGCAGAGCTGACTGTCTTTGAACGACCCACATTTCTCAGGAGGCCAATTAACC  
AGTGGTACTGGAGGAAGAAGCTGTAGAATTCGTTGTCAAGTCCAAGGAGATCCTCAACCACTGTGAG  
GTGAAAAAAGGATGATGCAGACTTGCCAAGAGGAAGGTATGACATCAAAGACGATTACACACTAAGAATT  
AAAAAGACCATGAGTACAGATGAAGGCACCTATATGTGTATTGCTGAGAATCGGGTTGAAAAATGGAAG  
CCTCTGTACTACTCACCGTCCGAGCTCGCCCTGTTGCTCCCCACAGTTTGTGGTTCGGCCAAGAGATCA  
GATTGTTGCTCAAGTTCGAACAGTGACATTTCCCTGTGAAACTAAAGGAAACCCACAGCCAGCTGTTTTT  
TGGCAGAAAGAAGGCAGCCAGAACCTACTTTTCCCAAACCAACCCAGCAGCCCAACAGTAGATGCTCAG  
TGTCACCAACTGGAGACCTCACAATCACAACATTCACGTTCCGACGCGGGTTACTACATCTGCCAGGC  
TTTAACGTGGCAGGAAGCATTITAGCAAAGCTCAACTGGAGGTTACTGATGTTTTGACAGATAGACCT  
CCACCTATAATTCTACAAGGCCAGCCAACCAACGCTGGCAGTGGATGGTACAGCGTTACTGAAATGTA  
AAGCCACTGGTATCCTCTTCTGTAATTAGCTGGTAAAGGAGGGATTTACTTTCCGGGTAGAGATCC  
AAGAGCAACAATTCAAGAGCAAGGCACACTGCAGATTAAGAATTTACGGATTTCTGATACTGGCAGTTAT  
ACTTGTGTGGCTACAAGTTCAGTGGAGAGACTTCTGGAGTGCAGTGTGGATGTGACAGAGTCTGGAG



[View online >](#)

CAACAATCAGTAAAACTATGATTTAAGTGACCTGCCAGGGCCACCATCCAAACCGCAGGTCACTGATGT  
TACTAAGAACAGTGTACCTTGTCTGGCAGCCAGGTACCCTTGGAAACCTTCCAGCAAGTGCATATATC  
ATTGAGGCTTTCAGCCAATCAGTGAGCAACAGCTGGCAGACCGTGGCAAACCATGTAAGACCACCTCT  
ATACTGTAAGAGGACTGCGGCCAATAACAATCTACTTATTCATGGTCAGAGCGATCAACCCCAAGGTCT  
CAGTGACCCAAGTCCCATGTGAGATCCTGTGCGCACACAAGATATCAGCCCACCAGCACAAAGGAGTGGAC  
CACAGGCAAGTGCAGAAAGAGCTAGGAGATGTCTTGTCCGTCTCATAATCCAGTTGTGCTGACTCCCA  
CCACGGTTCAGGTACATGGACGGTTGATCGCCAACCCAGTTTATCCAAGGCTACCGAGTGATGTATCG  
TCAGACTTCAGGTCTGCAGGCGACATCTTCGTGGCAGAATTTAGATGCCAAAGTCCCGACTGAACGAAGT  
GCTGTCTTAGTCAACCTGAAAAAGGGGTGACTTATGAAATTAAGTACGGCCATATTTTAAAGTTC  
AAGGAATGGATAGTGAATCTAAAACGGTTCGTAATACTGAAGAAGCCCAAGTGGCCACCACAGTCTGT  
CACTGTACTGACAGTTGGAAGCTACAATAGCACAAAGTATTAGTGTTCCTGGGATCCTCCTCCAGAT  
CACCAGAATGGAATTATCCAAGAATAACAAGATCTGGTGTCTAGGAAATGAAACGCGATTCCATATCAACA  
AAACTGTGGATGCAGCCATTCGGTCCGTAATAATTGGTGGATTATCCCAGGTATTCATACCGGGTAGA  
GGTTGCAGCTAGTACCAGTGCAGGGTTGGAGTAAAGAGTGAGCCACAGCCAATAATAATCGGGAGACGC  
AATGAAGTTGTCATTACTGAAAAACAATAACAGCATAACTGAGCAATCACTGATGTGGTGAAGCAACCAG  
CCTTTATAGCTGGTATTGGTGGTGCCTGCTGGGTAACTCTGATGGGTTTTAGCATATGGTTGATTGGCG  
AAGAAAAGAGAGGAAGGGACTCAGTAATTATGCTGTTACGTTTCAAAGAGGAGATGGAGGACTAATGAGC  
AATGGAAGCCGTCCAGGTCTTCTCAATGCTGGTATCCCAGCTATCCATGGCTTGCTGATTCTTGGCCAG  
CCACGAGCTTGCCAGTAAATAATAGCAACAGTGGCCAAATGAGATTGGAATTTTGGCCGTGGAGATGT  
GCTGCCACCAGTTCAGGCCAAGGGGATAAAACAGCAACGATGCTCTCAGATGGAGCCATTTATAGTAGC  
ATTGACTTCACTACAAAACAGTTACAACAGTTCAGCCAAATAACACAGGCTACCCCATATGCCACGA  
CACAGATCTTGCATTCCAACAGCATACATGAATTGGTGTGATCTGCCTGATCCACAATGGAAAAGCTC  
AATTCAGCAAAAAACAGATCTGATGGGATTTGGTTATTCTACTCTGATCAGAACAAAGTAAACAATGGT  
GGGAAAGGTGGAAAAAGAAAGAAAAATAAAAACTTCTAAACCACAGAAAAACAATGGATCCACTTGGG  
CCAATGTCCTCTACCTCCCCCCCAGTCCAGCCCTTCTGGCACGGAGCTGGAACACTATGCAGTGGA  
ACAACAAGAAAATGGCTATGACAGTGATAGCTGGTGGCCACCATTGCCAGTACAACTTACTTACACCAA  
GGTCTGGAAGATGAACTGGAAGAAGATGATGATAGGGTCCCAACACCTCCTGTTCCGAGGCGTGGCTTCT  
CTCCTGCTATCTCCTTTGGACAGCAGTCCACTGCAACTTACTCCATCCCACGGGAAGAGATGCAACC  
CATGCTGCAGGCTCACCTGGATGAGTTGACAAGAGCCTATCAGTTTGATATAGCAAAAACAACATGGCAC  
ATTCAAAGCAATAATCAACCTCCACAGCCTCCAGTTCACCGTTAGGTTATGTGCTGGAGCCTTGATTT  
CTGATTTGAAAACGGATGTTGCAGATGATGATGCCGACGACGAAGAGGAAGCTTTAGAAATCCCCAGGCC  
CCTGAGAGCACTGGACCAGACTCCTGGATCCAGCATGGACAATCTAGACAGCTCTGTGACAGGAAAAGCC  
TTTACCTCCTCTCAAAGACCTCGACCTACCAGCCATTTTCTACTGACAGTAACACCAGTGCAGCCCTGA  
GTCAAAGTCAGAGGCCTCGGCCACTAAAAACACAAGGGAGGGCGGATGGACCAACAACCAGCATTGCC  
TCATCGAAGGGAAGGAATGACAGATGAGGAGGCCTTGGTGGCCTATAGCAAGCCAGTTTCCCATCTCCA  
GGTGGCCACAGCTCATCAGGAACAGCTTCTTAAGGGATCCACTGGACCTAGGAAAACCGAGGTGTTGA  
GAGCAGGCCACCAGCGCAATGCCAGCGACCTTCTGACATAGGATATATGGGCTCCAACAGTCAAGGACA  
GTTTACAGGTGAATTA

ACGCGTACGCGGCGCTCGAGCAGAACTCATCTCAGAAGAGGATCTGGCAGCAAATGATATCCTGGATT  
ACAAGGATGACGACGAT AAGGTTTAA

**Protein Sequence:** >RC240128 representing NM\_001290039  
 Red=Cloning site Green=Tags(s)

```

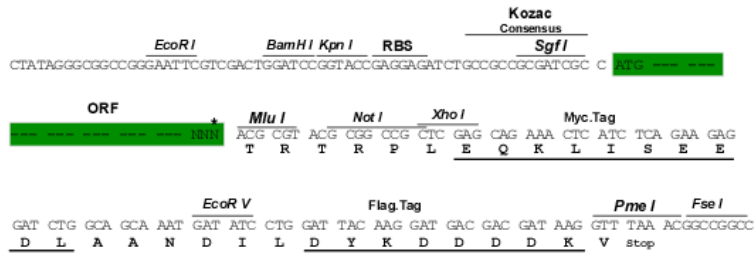
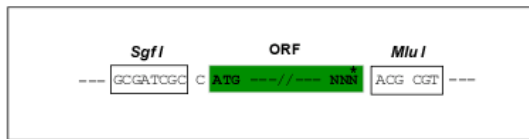
MSLLMFTQLLLCGFLYVRVDGSRLRQEDFPPRIVEHPSDVIIVSKGPTTLNCKAEGRPTPTIEWYKDG
VETDKDDPRSHRMLLPSGSLFFLRIVHGRRSKPDEGSYVCVARNYLGEAVSRNASLEVALLRDDFRQNP
DVVVAAGEPAILECQPPRGHPEPTIYWKDKVRIDDKEERISIRGGKLMISNTRKSDAGMYTCVGTNMVG
ERDSDPAELTVFERPTFLRRPINQVVLVEEAEVFRQVQGDQPPTVRWKKDDADLPRGRYDIKDDYTLRI
KKTMTSTDEGTYMCAENRVGKMEASATLTVRARPVAPPQFVVRPRDQIVAQGRVTVPCEKGNPQPAVF
WQKEGSQNLFPNQPPNSRCSVSPTGDLTITNIQRSDAGYICQALTVAGSILAKAQLVTDVLTDRP
PPIILQGPANQTLAVDGTALLKCKATGDPLPVISWLKEGFTFPGDRPRATIQEQGLQIKNLRISDTGTY
TCVATSSSGETSWSAVLDVTEGATISKNYDLSDLPGPPSKPQVTDVTKNSVTLWQPGTPTGLPASAYI
IEAFSQSVSNSWQTVANHVKTLLYTVRGLRPNTIYLFMVRAINPQGLSDPSPMSDPVRTQDISPPAQVD
HRQVQKELGDVLRVLRHNPVVLTPPTVQVTWTVDRQPQFIQGYRVMYRQTSGLQATSSWQNLDAKVPTERS
AVLVNLKKGVTYEIKVRPYFNEFQGMDSKTVRTTEEAPSAPPQSVTVLTVGSYNSTISVSWDPPPPD
HQNGIIQEQYKIWCLGNETRFHINKTVDAAIRSVIIGGLFPGIQYRVEVAASTSAGVGVKSEPQPIIIGRR
NEVVITENNSITEQITDVVKQPAFIAGIGGACWVILMGFSIWLWRRKKRKLGNAYAVTFQRGDGGLMS
NGSRPGLLNAGDPSYPWLADSWPATSLPVNNSNSGPNEIGNFGRGDVLPVPVGGDKTATMLSDGAIYSS
IDFTTKTSYNSSSQITQATPYATTQILHSNSIHELAVDLPDPQWKSSIQKTDLMGFGYSLPDQNKGNNG
GKGGKKNKNSKPKQKNNGSTWANVPLPPPVPQPLPGTELEHYAVEQQENGYSWCPPLPVQTYLHQ
GLEDELEEDDDRVPVPPVGVASSPAISFGQQSTATLTPSPREEMQPMQLQAHDELTRAYQFDIAKQTDWH
IQSNNQPPQPPVPLGYVSGALISDLETDVADDADDEEEALEIPRPLRALDQTPGSSMDNLDSSVTKGA
FTSSQRPRPTSPFSTDSNTSAALSQSRPRPTKHKHGGGRMDQQPALPHRREGMTDEEALVPYSKPSFPSP
GGHSSSGTASSKGSTGPRKTEVLRAGHQQRNASDLLDIGYMGNSNSQGFTEL
  
```

TRTRPLEQKLISEEDLAANDILDYKDDDDKV

**Restriction Sites:**  
**Cloning Scheme:**

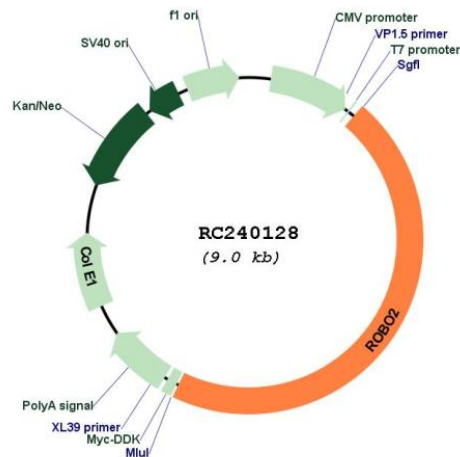
Sgfl-MluI

Cloning sites used for ORF Shuttling:



\* The last codon before the Stop codon of the ORF

## Plasmid Map:



ACCN: NM\_001290039

ORF Size: 4146 bp

**OTI Disclaimer:** The molecular sequence of this clone aligns with the gene accession number as a point of reference only. However, individual transcript sequences of the same gene can differ through naturally occurring variations (e.g. polymorphisms), each with its own valid existence. This clone is substantially in agreement with the reference, but a complete review of all prevailing variants is recommended prior to use. [More info](#)

**OTI Annotation:** This clone was engineered to express the complete ORF with an expression tag. Expression varies depending on the nature of the gene.

**Components:** The ORF clone is ion-exchange column purified and shipped in a 2D barcoded Matrix tube containing 10ug of transfection-ready, dried plasmid DNA (reconstitute with 100 ul of water).

**Reconstitution Method:**

1. Centrifuge at 5,000xg for 5min.
2. Carefully open the tube and add 100ul of sterile water to dissolve the DNA.
3. Close the tube and incubate for 10 minutes at room temperature.
4. Briefly vortex the tube and then do a quick spin (less than 5000xg) to concentrate the liquid at the bottom.
5. Store the suspended plasmid at -20°C. The DNA is stable for at least one year from date of shipping when stored at -20°C.

RefSeq: [NM\\_001290039.2](#)

RefSeq Size: 8701 bp

RefSeq ORF: 4149 bp

Locus ID: 6092

UniProt ID: [Q9HCK4](#)

<b>Cytogenetics:</b>	3p12.3
<b>Protein Families:</b>	Druggable Genome, Transmembrane
<b>Protein Pathways:</b>	Axon guidance
<b>MW:</b>	152.1 kDa
<b>Gene Summary:</b>	The protein encoded by this gene belongs to the ROBO family, part of the immunoglobulin superfamily of proteins that are highly conserved from fly to human. The encoded protein is a transmembrane receptor for the slit homolog 2 protein and functions in axon guidance and cell migration. Mutations in this gene are associated with vesicoureteral reflux, characterized by the backward flow of urine from the bladder into the ureters or the kidney. Alternative splicing results in multiple transcript variants. [provided by RefSeq, Feb 2014]