

## Product datasheet for **RC240126**

### IGF1 Receptor (IGF1R) (NM\_001291858) Human Tagged ORF Clone

#### Product data:

Product Type:	Expression Plasmids
Product Name:	IGF1 Receptor (IGF1R) (NM_001291858) Human Tagged ORF Clone
Tag:	Myc-DDK
Symbol:	IGF1R
Synonyms:	CD221; IGFIR; IGF1R; JTK13
Vector:	pCMV6-Entry (PS100001)
E. coli Selection:	Kanamycin (25 ug/mL)
Cell Selection:	Neomycin
ORF Nucleotide Sequence:	>RC240126 representing NM_001291858 Red=Cloning site Blue=ORF Green=Tags(s)

TTTTGTAATACGACTCACTATAGGGCGCCGGAATTCGTCGACTGGATCCGGTACCGAGGAGATCTGCC  
GCC**CGGATCGCC**

ATGAAGTCTGGCTCCGGAGGAGGGTCCCCGACCTCGTGTGGGGCTCCTGTTTCTCCTCCGCCGCTCT  
CGCTCTGGCCGACGAGTGGAGAAATCTGCGGGCCAGGCATCGACATCCGCAACGACTATCAGCAGCTGAA  
GCGCCTGGAGAACTGCACGGTGTGCGAGGGCTACCTCCACATCCTGCTCATCTCCAAGGCCGAGGACTAC  
CGCAGCTACCGCTTCCCCAAGCTCACGGTCATTACCGAGTACTTGTCTGCTGTTCCGAGTGGCTGGCCTCG  
AGAGCCTCGGAGACCTTCCCCAACCTCACGGTCATCCGCGGCTGAAAACCTTCTACAACCTACGCCCT  
GGTCATCTTCGAGATGACCAATCTCAAGGATATTGGGCTTTACAACCTGAGGAACATTACTCGGGGGGCC  
ATCAGGATTGAGAAAAATGCTGACCTCTGTTACCTCTCCACTGTGGACTGGTCCCTGATCCTGGATGCGG  
TGTCCAATAACTACATTGTGGGAATAAGCCCCAAAGGAATGTGGGGACCTGTGTCCAGGGACCATGGA  
GGAGAAGCCGATGTGTGAGAAGACCACCATCAACAATGAGTACAACCTACCGCTGCTGGACCACAAACCGC  
TGCCAGAAAAATGTGCCAAGCACGTGTGGGAAGCGGGCGTGCACCGAGAACAATGAGTGTCCACCCCG  
AGTGCTGGGCAGCTGCAGCGCCTGACAACGACACGGCTGTGTAGCTTCCCGCCACTACTACTATGC  
CGGTGTCTGTGTGCTGCTGCCCCGCCAACACCTACAGGTTTGAGGGCTGGCGCTGTGTGGACCGTGAC  
TTCTGCGCAACATCCTCAGCGCCGAGAGCAGCGACTCCGAGGGGTTTGTGATCCACGACGGCGAGTGCA  
TGCAGGAGTGCCCTCGGGCTTCATCCGCAACGGCAGCCAGAGCATGTAAGTGCATCCCTTGTGAAGGTCC  
TTGCCGAAGGTCTGTGAGGAAGAAAAGAAAACAAAGACCATTGATTCTGTTACTTCTGCTCAGATGCTC  
CAAGGATGCACCATCTTCAAGGGCAATTTGCTCATTAACATCCGACGGGGGAATAACATTGCTTCAGAGC  
TGGAGAATTCATGGGGCTCATCGAGTGGTACGGGCTACGTGAAGATCCGCCATTCTCATGCCTTGGT  
CTCCTTGTCTTCTAAAAAACCTTCGCTCATCTAGGAGAGGAGCAGCTAGAAGGGAATTACTCTTTC  
TACGTCCTCGACAACCAGAACTTGCAGCAACTGTGGGACTGGGACCACCGCAACCTGACCATCAAAGCAG  
GGAAAAATGTACTTTGCTTTCAATCCCAAATTATGTGTTTCCGAAATTTACCGCATGGAGGAAGTGACGGG  
GACTAAAGGGCGCCAAAGCAAAGGGGACATAAACACCAGGAACAACGGGGAGAGAGCCTCCTGTGAAGT  
GACGTCCTGCATTTACCTCCACCACCGTCAAGAATCGCATCATATAACCTGGCACCAGTACCGGC



[View online >](#)

CCCCTGACTACAGGGATCTCATCAGCTTACCCTTTACTACAAGGAAGCACCCCTTAAAGAATGTCACAGA  
GTATGATGGGCAGGATGCCTGCGGCTCCACAGCTGGAACATGGTGGACGTGGACCTCCCGCCCAACAAG  
GACGTGGAGCCCAGCATCTTACTACATGGGCTGAAGCCCTGGACTCAGTACGCCGTTTACGTCAAGGCTG  
TGACCCCTACCATGGTGGAGAACGACCATATCCGTGGGGCCAAGAGTGAGATCTTGTACATTGCGACCAA  
TGCTTCAGTTCCTTCCATTCCCTTGGACGTTCTTTCAGCATCGAACTCCTTCTCAGTTAATCGTGAAG  
TGGAAACCTCCCTCTCTGCCAACGGCAACCTGAGTTACTACATTGTGCGCTGGCAGCGGCAGCCTCAGG  
ACGGTACCTTTACCGGCACAATTACTGCTCCAAGACAAAATCCCCATCAGGAAGTATGCCGACGGCAC  
CATCGACATTGAGGAGGTACAGAGAACCCEAAGACTGAGGTGTGTGGTGGGGAGAAAGGCCTTGCTGC  
GCCTGCCCAAAACTGAAGCCGAGAAGCAGGCCGAGAAGGAGGAGGCTGAATACCGCAAAGTCTTTGAGA  
ATTTCTGCACAACCTCCATCTTCGTGCCAGACCTGAAAGGAAGCGGAGAGATGTCATGCAAGTGGCCAA  
CACCACCATGTCCAGCCGAAGCAGGAACACCACGGCCGACAGACCTACAACATCACCAGCCCGAAGAG  
CTGAGACAGAGTACCCTTTCTTGAGAGCAGAGTGGATAACAAGGAGAGAAGTGCATTCTAACCTTC  
GGCCTTTCACATTGTACCGCATCGATATCCACAGCTGCAACCACGAGGCTGAGAAGCTGGGCTGCAGCGC  
CTCCAACCTCGTCTTGAAGGACTATGCCCGAGAAGGAGCAGATGACATTCTGGGCCAGTGACCTGG  
GAGCCAAGGCCTGAAAACCTCCATCTTTTAAAGTGGCCGGAACCTGAGAATCCCAATGGATTGATTCTAA  
TGATGAAATAAAATACGGATCAACAAGTTGAGGATCAGCGAGAATGTGTGTCCAGACAGGAATACAGGAA  
GTATGGAGGGCCAAGCTAAACCGGCTAAACCCGGGAACTACACAGCCCGGATTGAGGCCACATCTCTC  
TCTGGGAATGGTTCGTGGACAGATCCTGTGTTCTTCTATGTCCAGGCCAAAAGATATGAAAACCTTCATCC  
ATCTGATCATCGCTCTGCCCGTGCCTGTCTGTTGATCGTGGGAGGGTGGTGAATTATGCTGTACGCTCT  
CCATAGAAAGAGAAAATAACAGCAGGCTGGGGAATGGAGTGTGTATGCCTCTGTGAACCCGGAGTACTTC  
AGCGCTGTGTGTACGTTCTGTATGAGTGGGAGGTGGCTCGGAGAAGATCACCATGAGCCGGGAAC  
TTGGGCAGGGTCTGTTGGGATGGTCTATGAAGGAGTTGCCAAGGGTGTGGTGAAGATGAACCTGAAAC  
CAGATGGCCATTAACACAGTGAACGAGCCGCAAGCATGCGTGAGAGGATTGAGTTTCTCAACGAAAC  
TCTGTGATGAAGGAGTTCAATTGTCACCATGTGGTGCATTGCTGGGTGTGGTGTCCCAAGCCAGCCAA  
CACTGGTCATCATGGAACCTGATGACACGGGCGATCTCAAAGTTATCTCCGGTCTCTGAGGCCAGAAAT  
GGAGAATAATCCAGTCTAGCACCTCCAAGCCTGAGCAAGATGATTGAGATGGCCGGAGAGATTGCAGAC  
GGCATGGCATACTCAACGCCAATAAGTTCGTCCACAGAGACCTTGCTGCCCGGAATTGCATGGTAGCCG  
AAGATTTACAGTCAAAATCGGAGATTTTGGTATGACGCGAGATATCTATGAGACAGACTATTACCGGAA  
AGGAGGAAAGGGCTGCTGCCCGTGCCTGGATGTCTCCTGAGTCCCTCAAGGATGGAGTCTTACCACCT  
TACTCGGACGTCTGGTCTTTCGGGGTCTCCTCTGGGAGATCGCCACACTGGCCGAGCAGCCTACCAGG  
GCTTGTCCAACGAGCAAGTCTTTCGCTTGTGTCATGGAGGGCGGCCTTCTGGACAAGCCAGACAAGTGTCC  
TGACATGCTGTTTGAACCTGATGCGCATGTGCTGGCAGTATAACCCCAAGATGAGGCCTTCCCTTCTGGAG  
ATCATCAGCAGCATCAAAGAGGAGATGGAGCCTGGCTTCCGGGAGGTCTCCTTCTACTACAGCGAGGAGA  
ACAAGTGTCCCGAGCCGGAGGAGCTGGACCTGGAGCCAGAGAACATGGAGAGCGTCCCCCTGGACCCCTC  
GGCCTCTCGTCTCCCTGCCACTGCCGACAGACACTCAGGACACAAGGCCGAGAACGGCCCGGCCCT  
GGGGTGTGGTCTCCGCGCCAGCTTCGACGAGAGACGCCTTACGCCACATGAACGGGGGCCGAAGA  
ACGAGCGGGCCTTGCCGCTGCCCAAGTCTTCGACCTGC

ACGCGTACGCGGCCGCTCGAGCAGAACTCATCTCAGAAGAGGATCTGGCAGCAAATGATATCCTGGATT  
ACAAGGATGACGACGATAAGGTTTAA

**Protein Sequence:** >RC240126 representing NM\_001291858  
 Red=Cloning site Green=Tags(s)

```

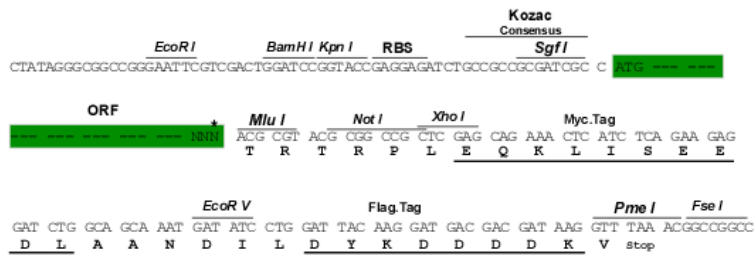
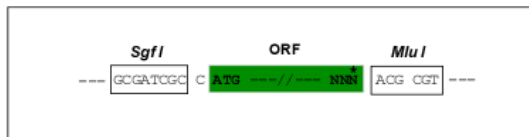
MKS GSGGG SPTS L WGL L FL SAAL SL WPTSGE ICGPGIDIRNDYQQLKRL ENCTVIEGYLHILLISKAEDY
RSYRFPKLT VITEY LLLFRVAGLES LGDLFPNLTVIRGWKLFYNYALVIFEMTNLKD IGLY NLRNITRGA
IRIEKNADLCYLSTVDW SLILD AVSN NYIVGNKPPKECGDLCPGTME EKPMCEKTTINNE YNYRCWTTNR
CQK MCPSTCGKRAC TENECC HPECLGSCSAPDNDTACVACRHY YYAGVCVPACPPNTYRFEGWRCVDRD
FCANILSAESSDSEGFVIHDGECMQECPSGFIRNGSQSMYCIPCEGCPKVCEEEKTKTIDSV TSAQML
QGCTIFKGNLLINIRRGNNIASELENFMGLIEVVTGYVKIRSHALVSLSFLK NLRILGEEQLEGNYSF
YVLDNQNLQQLWDWDRNLTIKAGKMYFAFNPKLCVSEIYRMEEVTGTKGRQSKGDINTRNNGERASCES
DVLHFTSTTTSKNR IITWHRYRPPDYRDLISFTVYYKEAPFKNVTEYDGDACGSNSWNMVDVLP PPK
DVEPGILLHLK PWTQYAVYVKA VTLTMVENDHIRGAKSEILYIRTNASVPSIPLDVL SASNSSQLIVK
WNPPSLP NGLSYYIVRWRQPQDGYLYRHNYCSKDKIPIRKYADGTIDIEEVTENPKTEVCGGEKGPCC
ACP KTEAEKQAEKEEAEYRKFENFLHNSIFVPRPERKRRDVMQVANTTMSRSRNTTAADTYNITDPEE
LETEY PPFESRVDNKERTVISNLRPFTLYRIDIHSCNHEAEKLGCSASNFVFARTMPAEGADDIPGPVTW
EPRPENSIFLKWPEPENGLILMYEIKYGSQVEDQRECVSRQYRKYGGAKLNRLNPGNYTARIQATSL
SGNGSWTDPVFFYVQAKRYENFIHLIIALPVAVLLIVGGLVIMLYV FHRKRNSRLGNGVLYASVNP EYF
SAADVYPDEWEVAREKITMSRELGGQSF GMVYEGVAKGVV KDEPETRVAIKTVNEAASMRERIEFLNEA
SVMKEFNCHHVRL LGVVSQGP TLVIMELMTRGDLKSYLRSLRPEMENN PVLAPP SLKMIQMAGEIAD
GMAYLNANKFVHRDLAARNCMVAEDFTVKIGDFGMTRDIYETDYRKG GGLLPVRWMSPELKDGVFTT
YSDVVSFGVVLWEIATLAEQPYQGLSNEQVLR FVMEGLLDKPDNCPDMLFELMRMCWQYNPKMRP SFLE
IIS SIKEEMEPGFREVSFY YSEENKLEPEELDLEPENMESVPLDPSASSSSLPLPDRHSGHKAENGGPG
GVLVLRASFDERQPYAHMNGGRKNERALPLPQSSTC
  
```

TRTRPLEQKLISEEDLAANDILDYKDDDDKV

**Restriction Sites:**  
**Cloning Scheme:**

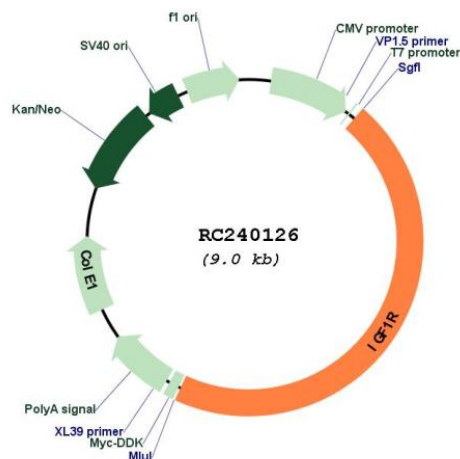
Sgfl-MluI

Cloning sites used for ORF Shuttling:



\* The last codon before the Stop codon of the ORF

## Plasmid Map:



ACCN: NM\_001291858

ORF Size: 4098 bp

**OTI Disclaimer:** The molecular sequence of this clone aligns with the gene accession number as a point of reference only. However, individual transcript sequences of the same gene can differ through naturally occurring variations (e.g. polymorphisms), each with its own valid existence. This clone is substantially in agreement with the reference, but a complete review of all prevailing variants is recommended prior to use. [More info](#)

**OTI Annotation:** This clone was engineered to express the complete ORF with an expression tag. Expression varies depending on the nature of the gene.

**Components:** The ORF clone is ion-exchange column purified and shipped in a 2D barcoded Matrix tube containing 10ug of transfection-ready, dried plasmid DNA (reconstitute with 100 ul of water).

**Reconstitution Method:**

1. Centrifuge at 5,000xg for 5min.
2. Carefully open the tube and add 100ul of sterile water to dissolve the DNA.
3. Close the tube and incubate for 10 minutes at room temperature.
4. Briefly vortex the tube and then do a quick spin (less than 5000xg) to concentrate the liquid at the bottom.
5. Store the suspended plasmid at -20°C. The DNA is stable for at least one year from date of shipping when stored at -20°C.

RefSeq: [NM\\_001291858.2](#)

RefSeq Size: 12259 bp

RefSeq ORF: 4101 bp

Locus ID: 3480

UniProt ID: [P08069](#)

Cytogenetics: 15q26.3

<b>Protein Families:</b>	Druggable Genome, Protein Kinase, Transmembrane
<b>Protein Pathways:</b>	Adherens junction, Colorectal cancer, Endocytosis, Focal adhesion, Glioma, Long-term depression, Melanoma, Oocyte meiosis, Pathways in cancer, Progesterone-mediated oocyte maturation, Prostate cancer
<b>MW:</b>	155.2 kDa
<b>Gene Summary:</b>	This receptor binds insulin-like growth factor with a high affinity. It has tyrosine kinase activity. The insulin-like growth factor I receptor plays a critical role in transformation events. Cleavage of the precursor generates alpha and beta subunits. It is highly overexpressed in most malignant tissues where it functions as an anti-apoptotic agent by enhancing cell survival. Alternatively spliced transcript variants encoding distinct isoforms have been found for this gene. [provided by RefSeq, May 2014]