

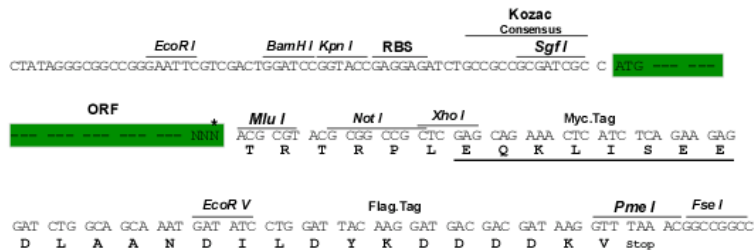
## Product datasheet for RC240118

### SETD5 (NM\_001292043) Human Tagged ORF Clone

#### Product data:

Product Type: Expression Plasmids  
 Product Name: SETD5 (NM\_001292043) Human Tagged ORF Clone  
 Tag: Myc-DDK  
 Symbol: SETD5  
 Mammalian Cell Selection: Neomycin  
 Vector: pCMV6-Entry (PS100001)  
 E. coli Selection: Kanamycin (25 ug/mL)  
 Restriction Sites: SgfI-MluI  
 Cloning Scheme:

Cloning sites used for ORF Shuttling:



\* The last codon before the Stop codon of the ORF

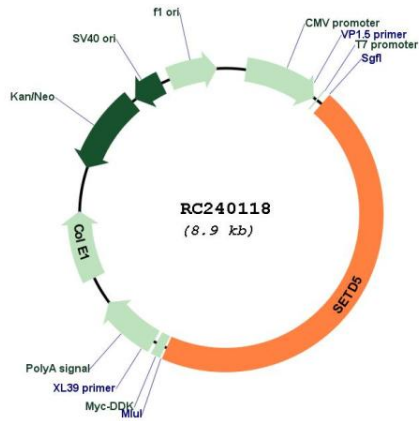
ACCN: NM\_001292043  
 ORF Size: 4032 bp



[View online >](#)

<b>OTI Disclaimer:</b>	The molecular sequence of this clone aligns with the gene accession number as a point of reference only. However, individual transcript sequences of the same gene can differ through naturally occurring variations (e.g. polymorphisms), each with its own valid existence. This clone is substantially in agreement with the reference, but a complete review of all prevailing variants is recommended prior to use. <a href="#">More info</a>
<b>OTI Annotation:</b>	This clone was engineered to express the complete ORF with an expression tag. Expression varies depending on the nature of the gene.
<b>Components:</b>	The ORF clone is ion-exchange column purified and shipped in a 2D barcoded Matrix tube containing 10ug of transfection-ready, dried plasmid DNA (reconstitute with 100 ul of water).
<b>Reconstitution Method:</b>	<ol style="list-style-type: none"><li>1. Centrifuge at 5,000xg for 5min.</li><li>2. Carefully open the tube and add 100ul of sterile water to dissolve the DNA.</li><li>3. Close the tube and incubate for 10 minutes at room temperature.</li><li>4. Briefly vortex the tube and then do a quick spin (less than 5000xg) to concentrate the liquid at the bottom.</li><li>5. Store the suspended plasmid at -20°C. The DNA is stable for at least one year from date of shipping when stored at -20°C.</li></ol>
<b>RefSeq:</b>	<a href="#">NM_001292043.2</a>
<b>RefSeq Size:</b>	7136 bp
<b>RefSeq ORF:</b>	4035 bp
<b>Locus ID:</b>	55209
<b>UniProt ID:</b>	<a href="#">Q9C0A6</a>
<b>Cytogenetics:</b>	3p25.3
<b>Protein Families:</b>	Druggable Genome
<b>MW:</b>	147.8 kDa
<b>Gene Summary:</b>	This function of this gene has yet to be determined but based on sequence similarity to other SET domain proteins it may function as a histone methyltransferase. Mutations in this gene have been associated with an autosomal dominant form of intellectual disability. Alternative splicing results in multiple transcript variants encoding different isoforms. [provided by RefSeq, Jul 2017]

Product images:



Circular map for RC240118