

Product datasheet for **RC240093**

MAP3K6 (NM_001297609) Human Tagged ORF Clone

Product data:

Product Type:	Expression Plasmids
Product Name:	MAP3K6 (NM_001297609) Human Tagged ORF Clone
Tag:	Myc-DDK
Symbol:	MAP3K6
Synonyms:	ASK2; MAPKKK6; MEKK6
Vector:	pCMV6-Entry (PS100001)
E. coli Selection:	Kanamycin (25 ug/mL)
Cell Selection:	Neomycin
ORF Nucleotide Sequence:	>RC240093 representing NM_001297609 Red=Cloning site Blue=ORF Green=Tags(s)

CTATAGGGCGCCGGGAATTCGTCGACTGGATCCGGTACCGAGGAGATCTGCCGCCGCGATCGCC**GGCGC**
GCCC

ATGGCGGGCCGTGTCCTCCGGTCCGGGGCGGAGCGCGCCGGCAGCTGCTGGCAGGACCCGCTGGCCGTGG
CGCTGAGCCGGGGCCGGCAGCTCGCGGCCCCCGGGCCGGGGCTGCGCGCGGAGCCGGCCGCTCAGCGT
GGTCTACGTGCTGACCCGGGAGCCGAGCCCGGGCTCGAGCCTCGGGAGGGAACCGAGCCGAGCCGCTG
CCCTGCGCTGCCTGCGCGAGGCTTGCAGCGAGGTCGCCCGCGCGCCGCCCGCAGCTGCGCAGCC
TGCCCTTCGGGACGCTGGAGCTAGGCGACACCGCGGCTCTGGATGCCTTCTACAACGCGGATGTGGTGGT
GCTGGAGGTGAGCAGCTCGTGGTACAGCCCTCCCTGTTCTACCACCTTGGTGTGCGTGAGAGCTTCAGC
ATGACCAACAATGTGCTCCTCTGCTCCCAGGCCGACCTCCCTGACCTGCAGGCCCTGCGGGATTGCGTTG
GCAGCTACACACTGATCCCCTATGTGGTACAGGCTGGTGGGGTGTGTGGTGTGATGCAGGCCCTTCT
GCGGGGCTGGCTGATGGGCTGGTACAGGCTGGAGTGGGACCGAGGCCCTGCTCACTCCCTGGTGGGG
CGGCTTGCCCGCTGCTGGAGGCCACCCACAGACTTTGTGGCTATTTCCGGGAGACATTGCGCGGG
ACATCCGGCAGGCGGGGAGCGGTTTCAGTGGGCCACAGCTGCGGCAGGAGCTGGCTGCCTGCAGCGGAG
ACTGGACAGCGTGGAGCTGCTGAGCCCCGACATCATGAACCTGCTGCTCTCCTACCGCGATGTGCAG
GACTACTCGGCCATCATTGAGCTGGTGGAGACGCTGCAGGCCCTTGCCACCTGTGATGTGGCCGAGCAGC
ATAATGTCTGTTCCACTACACTTTTGCCTCAACCGGAGGAACAGGCCCTGGGGACCGGGCGAAGGCCCT
GTCTGTGCTGCTGCCGCTGGTACAGCTTGGGGCTCTGTGGCGCCGATCTGTACTGCATGTGTGGCCGT
ATCTACAAGGACATGTTCTTCAGCTCGGGTTTCCAGGATGCTGGGCACCGGGAGCAGGCCATCACTGGT
ATCGCAAGGCTTTTACGTAGAGCCAGCCTTCACTCAGGCATCAATGCAGCTGTGCTCCTATTGCTGC
CGGCAGCACTTTGAGGATTCAAAGAGCTCCGGCTAATAGGCATGAAGCTGGGCTGCCTGCTGGCCCGC
AAAGGCTGCGTGGAGAAGATGCAGTATTACTGGGATGTGGGTTTCTACCTGGGAGCCAGATCCTCGCCA
ATGACCCACCCAGGTGGTGTGCTGGCTGCAGAGCAGCTGTATAAGCTCAATGCCCCATATGGTACCTGGT
GTCCGTGATGGAGACCTTCTGCTTACCAGCACTTCAGGCCACGCCAGAGCCCTGGAGGGCCACCA
CGCCGTGCCCACTTCTGGCTCCACTTCTTGTACAGTCTGCCAACCATCAAGACAGCCTGTGCCAGG



[View online >](#)

GCGACCAGTGCTTGGTGCTGGTCTGGAGATGAACAAGGTGCTGCTGCCTGCAAAGCTCGAGGTTGGGG
TACTGACCAGTAAGCACAGTGACCCTGAGCCTGCTGGAGCCTGAGACCCAGGACATCCCTCCAGCTGG
ACCTTCCCAGTCGCTCCATATGCGGAGTCAGCGCCTCAAAGCGCGACGAGCGCTGCTGCTTCTCTATG
CACTCCCCCGGCTCAGGACGTCCAGCTGTGCTTCCCAGCGTAGGGCACTGCCAGTGGTTCTGCGGCT
GATCCAGGCTGGGTGACGAACCCGGATTCCACGGCGCCCGGGAGGAGGCGGAGGGCGCGGGGGAGATG
TTGGAGTTTATTAGTACACGGAGACGGGCGAGCGGCTGGTCTGGCAAGGCACGTATGGGTGG
TGTACGCGGGCCGCGATCGCCACACGAGGTTGCGCATCGCCATCAAGGAGATCCCGGAGCGGGACAGCAT
GTTCTCTCAGCCCTGCATGAAGAGATCGCTCTTACAGACGCTGCGCCACAAGAACATAGTGGCTAT
CTGGGCTCAGCTAGCCAGGGCGGCTACCTTAAGATCTTTCATGGAGGAAGTGCCTGGAGGCAGCCTGTCT
CCTTGCTGCGGTGCGTGGGGACCCCTGAAGGACAACGAGAGCACCATCAGTTTCTACACCCGCCAGAT
CCTGCAGGGACTTGGCTACTTGCACGACAACCACATCGTGACAGGGACATAAAAGGGGACAATGTGCTG
ATCAACACCTTCACTGGGCTGCTCAAGATTTCTGACTTCGGCACCTCAAGCGGCTGGCAGGCATCACAC
CTTGCAGTGAACCTTACAGGAATCTGCAGTATATGGCCCCAGAAATCATTGACCAGGGCCACGCGG
GTATGGGAAAGCAGCTGACATCTGGTCACTGGGCTGACTGTATTGAGATGGCCACAGGTGCCCCCCC
TTCCACGAGCTCGGGAGCCACAGGCTGCCATGTTTCAGGTGGGTATGTACAAGTCCATCCGCCAATGC
CCAGCTCTGTGCGGCCGAGGCCAAGCCTTTCTCCTCGAACTTTTGGCCAGACCCCCGCTCCGAGC
CAGCGCCAGACTGCTGGGGACCCCTTCTGCAGCCTGGGAAAAGGAGCCGACGCCAGCCAGCTCCCCA
CGCATGCTCCAGGCCCTCAGATGCCCTTCTGCCAGTCCCCTCCTCAGCCAACTCAACCACCCAGT
CTCAGACATTCCTGTCCTCAGGCACCCTCTCAGCACCACCCAGCCCCCGAAGCGCTGCCTCAGTTA
TGGGGGACACCAGCAGCTCCGGGTGCCCCGAGGAGCCTGCGGCCGAGGAGCCTGCTCCTCCGGAGGAGT
TCGGGGCTGAGCCTGTGCACCAGGAGAGCAAGCGTCGGGCCATGCTGGCCGAGTATTGGAGCAGGAGC
TGCCAGCGCTGGCGGAGAATCTGCACCAGGAGCAGAAGCAAGAGCAGGGGGCCGCTTGGCAGAAACCA
TGTGGAAGAGCTGCTGCGTGCCTCGGGGCACACATCCACTCCCAACCGCCGCGAGCTGCCAGGAG
CTGCGGGCGCTGCAAGGACGGCTGAGGGCCAGGGCCTTGGGCCTGCGCTTCTGCACAGACCGCTGTTT
CCTTCCGGATGCGGTGAAGCAGATCCTCCGCAAGCGCCAGATCCGTCCACTGGATGTTGCTTGGGA
CTCACTGCTCAGCCGTGCTGTGCGGGCAGCCCTGGGTGTGCTAGGACCGGAGGTGGAGAAGGAGGCGGTC
TCACCGAGGTCAGAGGAGCTGAGTAATGAAGGGGACTCCAGCAGAGCCAGGCCAGCAGAGCCCGCTT
CGGTGGAGCCCGAGCAGGGCCCCGCTCCTCTGATGGTGCAGCTGAGCCTTTGAGGGCAGAGACTGATCG
GCTGCGGAAATCCTGGCGGGAAAGGAACGGGAGTACCAGGCCCTGGTGCAGCGGCTCTACAGCGGCTG
AATGAGGAAGCCCGACCTATGCTCCTGGCCCCAGAGCCTCCAATGCTCTTTCAACGGACCAGGGCCTGG
TGCAGTGGCTACAGGAATGAATGTGGATTCAGGCACCATCCAATGCTGTTGAACCATAGCTTACCCT
CCACACTGCTCACCTATGCCACTCGAGATGACCTCATCTACACCCGCATCAGGGGAGGGATGGTATGC
CGCATCTGGAGGGCCATCTTGGCACAGCGAGCAGGATCCACACCAGTCACTCTGGACCC

ACGCGTACGCGGCCGCTCGAGCAGAACTCATCTCAGAAGAGGATCTGGCAGCAATGATATCCTGGATT
ACAAGGATGACGACGATAAGGTTTAA

Protein Sequence: >RC240093 representing NM_001297609
 Red=Cloning site Green=Tags(s)

```
MAGPCPRSGAERAGSCWQDPLAVALSRGRQLAAPPGRGCARSRPLSVVVYLTREPQGLEPREGTEAEPL
PLRCLREACAQVPRPRPPQLRSLPFGTLELGDTAALDAFYNAVYVLEVSSSLVQPSLFYHLGVRESFS
MTNNVLLCSQADLPDLQALRDCVGSYTLIPYVVTATGRVLCGDAGLLRGLADGLVQAGVGTEALLTPLVG
RLARLLEATPTDSCGYFRETIRRDIRQARERFSGPQLRQELARLQRRLDSEVELLSPDIIMNLLLSYRDVQ
DYSAIIELVETLQALPTCDVAEQHNVCFHYYTFALNRRNRPGDRAKALSVLLPLVQLEGSVAPDLYCMCGR
IYKDMFFSSGFQDAGHREQAYHWYRKAFDVEPSLHSGINAAVLLIAAGQHFEDSKELRLIGMKLGCLLAR
KGCVEKMQYYWDVGFYLAGAQLANDPTQVVLAAEQLYKLNAPIWYLVSMETFLLYQHFRPTPEPPGGPP
RRAHFWLHFLQSCQPFKTACAQGDQCLVLVLEMNKVLPAKLEVGRGTDVSTVTLVSLLEPETQDIPSSW
TFPVASICGVSASKRDERCCFLYALPPAQDVQLCFPSVGHQWFCGLIQAWVTNPSTAPAEAEAGAGEM
LEFDYETETGERLVLGKGTGVVYAGRDRHTRVRIAIKEIPERDSRFSQPLHEEIALHRRLRHKNIIVRY
LGSASQGGYLKIFMEEVPGGSLSSLLRSVWGPKDNESTISFYTRQILQGLGYLHDNHIHRDIKGDNLV
INTFSGLLKISDFGTSKRLAGITPCTETFTGTLYMAPEIIDQGPRGYGAADIWSLGTVIEMATGRPP
FHELGSQAAMFQVGMKYVHPPMPSSLSAEQAFLLRTEFDPRLRASAQTLLGDPFLQPGKRSRSPSSP
RHAPRPSDAPSASPTPSANSTTQSQTFPCQAPSQHPPSPPKRCLSYGGTSQLRVPEEPAEAPASPEES
SGLSLLHQESKRRAMLAAVLEQELPALAENLHQEQKQEQGARLGRNHVEELLRCLGAHIHTPNRRQLAQE
LRALQGRRLRAQGLGPALLHRPLFAFPDAVKQILRKRQIRPHWMFVLDLSSRAVRAALGVLGPEVEKEAV
SPRSEELSNEGDSQQSPGQSQPLPVEPEQGPAPLMVQLSLLRAETDRLREILAGKEREYQALVQALQRL
NEEARTYVLAPEPPTALSTDQGLVQWLQELNVDSGTIQMLLNHSFTLHTLLTYATRDDLIYTRIRGGMVC
RIWRAILAQRAGSTPVTSGP
```

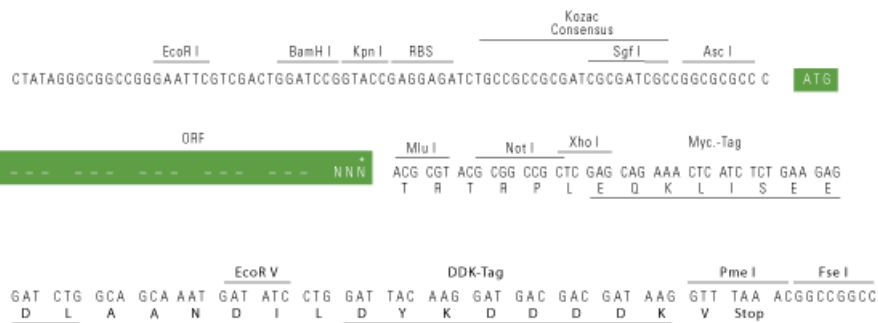
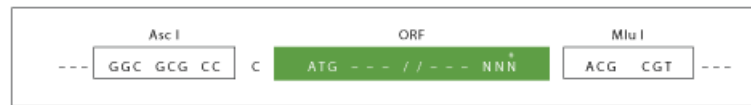
TRTRPLEQKLISEEDLAANDILDYKDDDDKV

Restriction Sites:

Cloning Scheme:

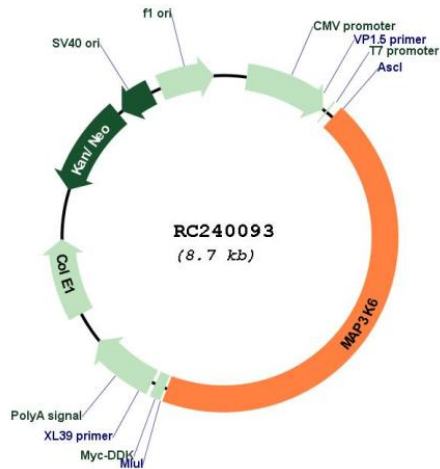
AscI-MluI

Cloning sites used for ORF Shuttling:



* The last codon before the Stop codon of the ORF

Plasmid Map:



ACCN: NM_001297609

ORF Size: 3840 bp

OTI Disclaimer: The molecular sequence of this clone aligns with the gene accession number as a point of reference only. However, individual transcript sequences of the same gene can differ through naturally occurring variations (e.g. polymorphisms), each with its own valid existence. This clone is substantially in agreement with the reference, but a complete review of all prevailing variants is recommended prior to use. [More info](#)

OTI Annotation: This clone was engineered to express the complete ORF with an expression tag. Expression varies depending on the nature of the gene.

Components: The ORF clone is ion-exchange column purified and shipped in a 2D barcoded Matrix tube containing 10ug of transfection-ready, dried plasmid DNA (reconstitute with 100 ul of water).

Reconstitution Method:

1. Centrifuge at 5,000xg for 5min.
2. Carefully open the tube and add 100ul of sterile water to dissolve the DNA.
3. Close the tube and incubate for 10 minutes at room temperature.
4. Briefly vortex the tube and then do a quick spin (less than 5000xg) to concentrate the liquid at the bottom.
5. Store the suspended plasmid at -20°C. The DNA is stable for at least one year from date of shipping when stored at -20°C.

RefSeq: [NM_001297609.2](#)

RefSeq Size: 4329 bp

RefSeq ORF: 3843 bp

Locus ID: 9064

UniProt ID: [O95382](#)

Cytogenetics: 1p36.11

Protein Families: Druggable Genome, Protein Kinase

Protein Pathways: MAPK signaling pathway

MW: 142.1 kDa

Gene Summary: This gene encodes a serine/threonine protein kinase that forms a component of protein kinase-mediated signal transduction cascades. The encoded kinase participates in the regulation of vascular endothelial growth factor (VEGF) expression. Alternative splicing results in multiple transcript variants. [provided by RefSeq, Jul 2014]