

Product datasheet for **RC240056**

PEX1 (NM_001282677) Human Tagged ORF Clone

Product data:

Product Type: Expression Plasmids
Product Name: PEX1 (NM_001282677) Human Tagged ORF Clone
Tag: Myc-DDK
Symbol: PEX1
Synonyms: HMLR1; PBD1A; PBD1B; ZWS; ZWS1
Vector: pCMV6-Entry (PS100001)
E. coli Selection: Kanamycin (25 ug/mL)
Cell Selection: Neomycin
ORF Nucleotide Sequence: >RC240056 representing NM_001282677
 Red=Cloning site Blue=ORF Green=Tags(s)

CTATAGGGCGGCCGGGAATTCGTCGACTGGATCCGGTACCGAGGAGATCTGCCGCCGCGATCGCCGGCGC
 GCCC

ATGTGGGGCAGCGATCGCTGGCGGGTCTGGGGGAGGCGGGCGGCAGTGACTGTGGCCTTCACCAACG
 CTCGCGACTGCTTCTCCACCTGCCGCGCGTCTCGTGGCCAGCTGCATCTGCTGCAGAATCAAGCTAT
 AGAAGTGGTCTGGAGTACCAGCCTGCATTCTTGAGCTGGGTGGAAGGCAGGCATTTTAGTGATCAAGGT
 GAAAATGTGGCTGAAATTAACAGACAAGTTGGTCAAAAACCTGGACTCTCAAATGGGGGACAGGTATTTCT
 TCAAGCCATGTTCCCATGTGGTATCTTGTCACAAAGTTGAGGTGGAACCCCTCTCAGCAGATGATTGGGA
 GATACTGGAGCTGCATGCTGTTCCCTTGAACAACATCTTCTAGATCAAATTCGAATAGTTTTTCCAAAA
 GCCATTTTTCTGTTGGGTGATCAACAAACGTACATATTTATCCAAATGTTGCACTAATACCAGCTG
 CCTCTTATGGAAGGCTGGAACCTGACACCAAACCTCTTATTAGCCAAAGACACGCCGAGCCAAAGAGAA
 TACATTTTCAAAGCTGATGTGAATATAAAAACTTCATAGTTATGGAAGAGACCAGAAAGGAATGATG
 AAAGAATTCAAACCAAGCAACTTCAGTCAAATACTGTGGGAATCACTGAATCTAATGAAAACGAGTCAG
 AGATTCCAGTTGACTCATCATCAGTAGCAAGTTTATGGACTATGATAGGAAGCATTTTTTCTTTCAATC
 TGAGAAGAAACAAGAGACATCTTGGGGTTAACTGAAATCAATGCATTCAAAAATATGCAGTCAAAGGTT
 GTTCTCTAGACAATATTTTTCAGAGTATGCAAATCTCAACCTCTAGTATATATAACCGCTCAGCAACCT
 CTGTTTTTCATAAACTGTGCCATTATGATTTCCATGGGACCAGGAATTTTTGATGTAGAGCCAG
 CTTTACTGTGACATATGGAAGCTAGTTAAGCTACTTTCTCAAAGCAACAGCAAAGTAAAAACAAAAACA
 AATGTGTTATCACCTGAAAAAGAGAAGCAGATGTCAGAGCCACTAGATCAAAAAAATTAGGTGAGATC
 ATAATGAAGAAGATGAGAAGGCTGTGTGCTACAAGTAGTCTGGAATGGACTTGAAGAATTGAACAATGC
 CATCAAATATACAAAAATGTAGAAGTTCTCCATCTTGGGAAAGTCTGGATTCCAGATGACCTGAGGAAG
 AGACTAAATATAGAAATGCATGCCGTAGTCAGGATAACTCCAGTGAAGTTACCCCTAAAATTCAGAT
 CTCTAAAGTTACAACTAGAGAGAATTTACCTAAAGACATAAGTGAAGAAGACATAAAAACTGTATTTTA
 TTCATGGCTACAGCAGTCTACTACCACCATGCTTCTTTGGTAATATCAGAGGAAGAATTTATTAAGCTG
 GAAACTAAAGATGGACTGAAGGAATTTTCTCTGAGTATAGTTCATTCTTGGGAAAAAGAAAAAGATAAAA



[View online »](#)

ATATTTTCTGTTGAGTCCCAATTTGCTGCAGAAGACTACAATACAAGTCTTCTAGATCCTATGGTAAA
AGAAGAAAACAGTGAGGAAATGACTTTATTCTTCTTTTTAAAGCTGAGCTCTTTGGGAGGAGTGAAT
TCCTTAGGCGTATCCTCCTTGGAGCACATCACTCACAGCCTCCTGGGACGCCCTTTGTCTCGGCAGCTGA
TGTCTCTTGTTCAGGACTTAGGAATGGAGCTTTTTACTCACAGGAGGAAAGGGAAGTGGAAAATCAAC
TTTAGCCAAAGCAATCTGTAAGAAGCATTGACAACTGGATGCCCATGTGGAGAGAGTTGACTGTAAA
GCTTTACGAGCTTTGAATGATATGATAAAAGAGTTTATCTCCATGGGAAGTTTGGTTGCACTGATTGCCA
CAAGTCAGTCTCAGCAATCTCTACATCCTTTACTTGTCTGCTCAAGGAGTTCACATATTTTCAGTGCCT
CCAACACATTCAGCCTCCTAATCAGGAACAAAGATGTGAAATTCGTGTAATGTAATAAAAAATAAATTG
GACTGTGATATAAAACAAGTTCACCGATCTTGACCTGCAGCATGTAGCTAAAGAACTGGCGGGTTTGTGG
CTAGAGATTTTACAGTACTTGTGGATCGAGCCATACATTCTCGACTCTCTCGTCAGAGTATATCCACCAG
AGAAAAATTAGTTTTAACAACATTGGACTTCCAAAAGGCTCTCCGCGGATTTTCTCCTGCGTCTTTGCGA
AGTGTCAACCTGCATAAACCTAGAGACCTGGTTGGGACAAGATTGGTGGTTACATGAAGTTAGGCAGA
TACTCATGGATACTATCCAGTTACCTGCCAAGTATCCAGAATTTTGCAACTTGCCCATACGACAAG
AACAGGAATACTGTTGTATGGTCCGCTGGAACAGGAAAACTTACTAGCTGGGTAATTGCACGAGAG
AGTAGAATGAATTTTATAAGTGTCAAGGGCCAGAGTACTCAGCAAATACATTGGAGCAAGTGAACAAG
CTGTTCCGGATATTTTTATTAGAGCACAGGCTGCAAAGCCTGCATTCTTTTCTTGATGAATTTGAATC
CATTGCTCCTCGGCGGGTTCATGATAATACAGGAGTTACAGACCGAGTAGTTAACCAAGTTGCTGACTCAG
TTGGATGGAGTAGAAGGCTTACAGGGTGTATGTATTGGCTGCTACTAGTCGCCCTGACTTGATTGACC
CTGCCCTGCTTAGGCCTGGTCGACTAGATAAATGTGTATACTGTCCTCCTCCTGATCAGGTGTCACGTCT
TGAAATTTTAAATGTCCTCAGTACTCTACCTCTGGCAGATGATGTTGACCTTCAGCATGTAGCATCA
GTAAGTACTCCTTTACTGGAGCTGATCTGAAAGCTTTACTTTACAATGCCAATTGGAGGCCTTACATG
GAATGCTGCTCTCGAGTGGACTCCAGGATGGAAGTTCAGCTCTGATAGTGACCTAAGTCTGCTTCAAT
GGTCTTTCTTAACCATAGCAGTGGCTCTGACGATTCAGCTGGAGATGGAGAATGTGGCTTAGATCAGTCC
CTTGTCTTTAGAGATGTCGAGATCCTTCCAGATGAATCAAATTCATATGTACCGCTCTACTTTG
GAAGCTCTTATGAATCAGAACTTGAAAATGGAACCTCTCTGATTTGAGCTCACAAATGTCTCTGCACC
AAGCTCCATGACTCAGGATTTGCCTGGAGTTCTGGGAAAGACCAGTTGTTTTACAGCCTCCAGTGTTA
AGGACAGCTTCACAAGAGGGTTGCCAAGAACTTACACAAGAACAAGAGATCAACTGAGGGCAGATATCA
GTATTATCAAAGGCAGATACCGGAGCCAAAGTGGAGAGGACGAATCCATGAACCAACCAGGACCAATCAA
AACCAGACTGGCTATTAGTCAGTCACATTTAATGACTGCACTTGGTCACACAAGACCATCCATTAGTGAA
GATGACTGGAAGAATTTTGTGAGCTATATGAAAGCTTTCAAATCAAAGAGGAGAAAAATCAAAGTG
GAACAATGTTTCGACCTGGACAGAAAGTAACTTTAGCA

AGCGGACCGACGCGTACGCGCCGCTCGAGCAGAACTCATCTCAGAAGAGGATCTGGCAGCAAATGATATCC
TGGATTACAAGGATGACGACGATAAGGTTTAA

Protein Sequence: >RC240056 representing NM_001282677
 Red=Cloning site Green=Tags(s)

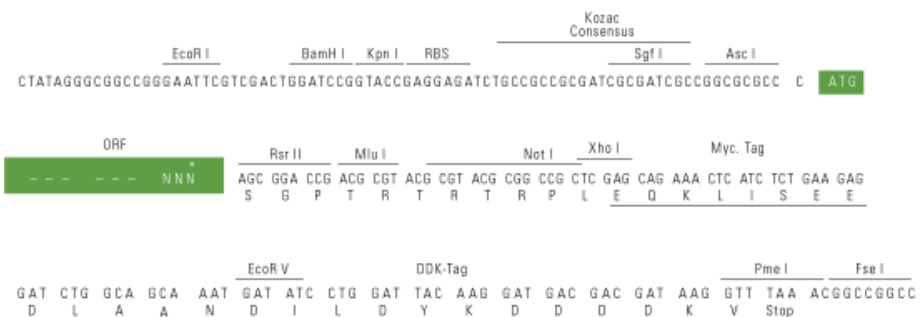
MWGS DRLAGAGGGGA AVTVAF TNARD CFLHLPRRLVAQLHLLQNQAIEV VWSHQPAFLSWVEGRHFS DQG
 ENVAEINRQV GQKLG L SNGGQVFLKPCSHV VSCQQVEVEPLSADDWEI LELHAVSLEQHLLDQIRIVFPK
 AIFPVVDQQT YIFIQI VALIPAASYGRLETDTKLLIQPKTRRAKENTFSKADAEYK KLSYGRDQKGM
 KELQTKQLQSN TVGITESNENESEIPVDSSSVASLWTMIGSIFSFQSEKKQETSWGLTEINAFKNMQSKV
 VPLDNIFRVCKSQPPSIYNASATSVFHKHCAIHVFPWDQEYFDVEPSFTV TYGKLVKLLSPKQQQSKTKQ
 NVLSPEKEKQMS EPLDQKKIRSDHNEEDEKACVLQVVWNGLEELNNAIKYTKNVEVLHLGK VWPDDL RK
 RLNIEMHAVVRITPVEVTPKIPRSLKLPRENLPKDI SEEDIKTVFYSWLQQSTTTMLPLVISEEEFIKL
 ETKDGLKEFSL SIVHSWEKEKDKNIFLLSPNLLQKTTIQVLLDPMVKEENSEEIDFILPFLKLSLGGVN
 SLGVSSLEHITHSLLGRPLSRQLMSLVAGLRNGALLL TGGKSGKSTLAKAICKEAFDKLDAHVERVDCK
 ALRALNDMIKEFISMGS LVALIATSQSQQSLHPLL VSAQGVHIFQCVQHIQPPNQEQRCEILCNVIKNKL
 DCDINKFTDL DLQHVAKETGGFVARDFTVLVDRAIHSRLSRQSI STREKLVLTTLDFQKALRGFLPASLR
 SVNLHKPRDLGWDKIGGLHEVRQILMDTIQLPAKYPELFANLP I RQRTGILLYGPPTGKTLLAGVIARE
 SRMNFISVKGPELLSKYIGASEQAVRDI FIRAQA AKPCILFFDEFESIAPRRGHNTGVTDRV VNQLLTQ
 LDGVEGLQGVYVLAATS RPDLDIPALLRPGRLDKCVYCPPPDQVSRLEILNVLSDSLPLADDVLDLQHVAS
 VTDSFTGADLKALLYNAQLEALHGMLLSSGLQDGSSSSSDSLSSSMVFLNHSSGSDSAGDGECGLDQS
 LVSLEMSEILPDESKFNMYRLYFGSSYESELNGTSSD LSSQCL SAPSSMTQDLPGVPGKDQLFSQPPVL
 RTASQEGCQELTQEQRDLRADISIIKGRYRSQSGEDES MNQPGPIKTRLAISQSHLMTALGHTRPSISE
 DDWKNFAELYESFQNPKR RNQSGT MFRPGQKVTLA

SGP TRTRPLEQKLI SEEDLAANDILDYKDDDDKV

Restriction Sites: AscI-RsrII

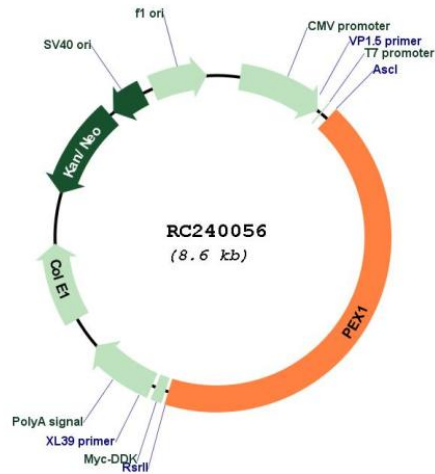
Cloning Scheme:

Cloning sites used for ORF Shuttling:



* The last codon before the Stop codon of the ORF

Plasmid Map:



ACCN: NM_001282677

ORF Size: 3678 bp

OTI Disclaimer: The molecular sequence of this clone aligns with the gene accession number as a point of reference only. However, individual transcript sequences of the same gene can differ through naturally occurring variations (e.g. polymorphisms), each with its own valid existence. This clone is substantially in agreement with the reference, but a complete review of all prevailing variants is recommended prior to use. [More info](#)

OTI Annotation: This clone was engineered to express the complete ORF with an expression tag. Expression varies depending on the nature of the gene.

Components: The ORF clone is ion-exchange column purified and shipped in a 2D barcoded Matrix tube containing 10ug of transfection-ready, dried plasmid DNA (reconstitute with 100 ul of water).

Reconstitution Method:

1. Centrifuge at 5,000xg for 5min.
2. Carefully open the tube and add 100ul of sterile water to dissolve the DNA.
3. Close the tube and incubate for 10 minutes at room temperature.
4. Briefly vortex the tube and then do a quick spin (less than 5000xg) to concentrate the liquid at the bottom.
5. Store the suspended plasmid at -20°C. The DNA is stable for at least one year from date of shipping when stored at -20°C.

RefSeq: [NM_001282677.2](#)

RefSeq Size: 4221 bp

RefSeq ORF: 3681 bp

Locus ID: 5189

UniProt ID: [O43933](#)

Cytogenetics: 7q21.2

Protein Families: Druggable Genome

MW: 137 kDa

Gene Summary: This gene encodes a member of the AAA ATPase family, a large group of ATPases associated with diverse cellular activities. This protein is cytoplasmic but is often anchored to a peroxisomal membrane where it forms a heteromeric complex and plays a role in the import of proteins into peroxisomes and peroxisome biogenesis. Mutations in this gene have been associated with complementation group 1 peroxisomal disorders such as neonatal adrenoleukodystrophy, infantile Refsum disease, and Zellweger syndrome. Alternatively spliced transcript variants have been found for this gene. [provided by RefSeq, Sep 2013]